

RUSSELL
ATHLETIC



SPRING

17



BASEBALL



SPRING 2017 BASEBALL

SPRING 2017 BASEBALL

4	BASEBALL
8	BASEBALL LINE DRIVE PROGRAM
22	BASEBALL SUBLIMATION

56	BASEBALL SPECIAL ORDER
63	BASEBALL BASE HIT PROGRAM
65	BASEBALL STOCK

Color and Fabric Guide

Fabric #	Baseball Grey	Black	Burnt Orange	Cardinal	Columbia Blue	Dark Green	Giants Cream	Gold	Grid Iron Silver	GT Gold	Kelly	Maroon	Navy	Purple	Royal	Stealth	True Red	White
47			N/A		N/A			N/A	N/A	N/A	N/A							
72							N/A				N/A							
VT							N/A				N/A							
LG									N/A									

53 CLOTH COLORS: Grey w/Purple (GPZ), Grey w/Royal (GEZ), Grey w/Black (GBZ), Grey w/Dark Green (GDZ), Grey w/Navy (GNZ), White w/Dark Green (WDZ), White w/Purple (WPZ), White w/Maroon (WOZ), White w/Black (WBZ), White w/Navy (WNZ), White w/Royal (WRZ), White/True Red (WZZ)

Fabric #	Description
47	Heavyweight Stretch Double Knit. 100% Nylon, 8.8 oz. sq. yd.
53	Engineered Pinstripe Warp Knit. 100% Polyester. 8.0 oz. sq. yd.
72	Dri-Power® 90% Nylon/10% Spandex - Colors 7.2 oz. sq. yd. Dri-Power® 91% Polyester/9% Spandex - White 6.8 oz. sq. yd.
VT	Dri-Power® 92% Nylon Mesh/8% Spandex - Colors 6.9 oz. sq. yd. Dri-Power® 92% Polyester Mesh/8% Spandex - White 6.9 oz. sq. yd.
LG	100% Polyester Stretch Double Knit. 7.5 oz. sq. yd.

Decoration Color Guide

	Air Force Blue	Aqua	Baseball Grey	Black	Blazer Gold	Burnt Orange	Cardinal	Columbia Blue	Dark Green	Diamond Pink	Eagle Grey	Football Silver	Gold	GT Gold	Grid Iron Silver	Kelly	Light Blue	Light Old Gold	Light Orange	Marlin Aqua	Maroon	Metallic Gold	Metallic Silver	Navy	Old Gold	Purple	Royal	Seal Brown	Soul Blue	Stealth	Texas Orange	True Red	Vegas Gold	White
RUSSCOTE																	N/A																	
PRO TWILL																	N/A							N/A										

Team / Fashion Colors Sublimation Guide (Baseball, Softball, Track, and Performance)

	TEAM COLORS																								FASHION COLORS										
	Aqua	Baseball Grey	Black	Blazer Gold	Burnt Orange	Cardinal	Columbia Blue	Dark Green	Giants Cream	Gold	Grid Iron Silver	GT Gold	Kelly	Light Old Gold	Light Orange	Maroon	Navy	Purple	Royal	Seal Brown	Soul Blue	Stealth	Texas Orange	True Red	White	Army Camo Green	Army Camo Grey	Army Camo Tan	Watermelon Pink	Diamond Pink	Electric Green	Lavender Haze	Laser Yellow	Techno Green	
SUB COLORS																																			
TONAL COLOR 1																										N/A	N/A	N/A							

These colors are only offered in sublimated garments.

FABRIC #	DESCRIPTION
DP	100% Polyester 4.0 oz. sq. yd - White Only
72	91% Polyester/9% Spandex 7.2 oz. sq. yd - White Only
V2	92% Polyester/8% Spandex 5.5 oz. sq. yd - White Only
VT	92% Polyester/8% Spandex 6.9 oz. sq. yd - White Only

FABRIC #	DESCRIPTION
S2	92% Polyester/8% Spandex 6.9 oz. sq. yd - White Only
JA	100% Polyester Mesh 7.4 oz. sq. yd - White Only
VH	72% Polyester/28% Spandex Mesh 5.3 oz. sq. yd - White Only

BASEBALL



SUBLIMATION

LINE DRIVE



SPECIAL ORDER



STOCK



THE HOT STOVE



**SUBLIMATED TWO
BUTTON PLACKET JERSEY**



PAGE 34

**SHORT SLEEVE
SUBLIMATED GAME JERSEY**



PAGE 42

**V-NECK SUBLIMATED
JERSEY**



PAGE 38

RUSSELL ATHLETIC



**SUBLIMATED ¼
ZIP PULLOVER**



PAGE 207

**¾ SLEEVE SUBLIMATED
BASEBALL SHIRT**



PAGE 49

**SUBLIMATED
FLEECE PULLOVER**



PAGE 50

2017 MEN'S LINE DRIVE

MODIFIED CUSTOM PROGRAM

ORDER DEADLINE:

Order by: 11/21/2016
Ship by: 1/16/2017

Order by: 1/30/2017
Ship by: 3/13/2017



346VTMT

NEW ORDERS:

15 pieces per style, color and decoration

DECORATION:

JERSEY:

1 or 2 Color Twill (346VTMT Only)

Includes Team Name and Front and Back Numbers

Sublimated Styles: Fully Sublimated, No Patterns

345VTMU: (Single, SUM336, Williamsport Razzle, and Stadium)

356S2MU: (Classic Triple, Rally, and Option-Ground Rule)

357S2MU: (Grand Slam, Ace, and Option-Triple Crown)

FONTS - Team Name available in Script w/ Tailsweep, Script, Full Block, Rock, Stinger

Numbers Available in Full Block, Rock, Stinger

PLACEMENTS:

Team Name Placements: 7N or 8

Numbers: 4" Front Number PL# 10 or #11 and 8" Back Number PL# 6

PROMOTIONS:

For every jersey purchased team will receive a
FREE 316KWMK.



**CONTACT YOUR RTS DEALER FOR
PRICING AND PROMOTIONS.**

WILLIAMSPORT RAZZLE
345VTMU



STADIUM
345VTMU



SUM336
345VTMU



SINGLE
345VTMU



CLASSIC TRIPLE
356S2MU



RALLY
356S2MU



OPTION-GROUND RULE
356S2MU



ACE
357S2MU



GRAND SLAM
357S2MU



OPTION-TRIPLE CROWN
357S2MU



SPECIAL PACKAGED PRICING OFFERED BY
RUSSELL TEAM SPECIALIST RTS DEALERS ONLY.





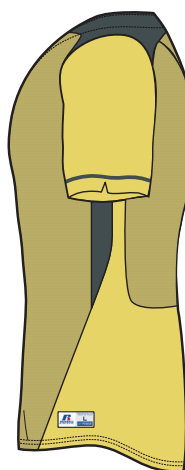
Jersey: 346VTMT

STEPS:

- Step 1 - Body / Sleeves (Stealth)
- Step 2 - Shoulder Inserts and Side Inserts (GT Gold)
- Step 3 - Braid (GT Gold)

Shown with 338LGMP Pant

See page 21 for style and program details



WILLIAMSPORT RAZZLE

Jersey: 345VTMU



STEPS:

Step 1 - Body / Sleeve (Royal)

Step 2 - Piping (White)

Step 3 - Sleeve and Body Insert Design (Columbia Blue)

Step 4 - Side Insert / Sleeve Stripe (Gold)

Shown with 33353MT Pant

See page 21 for style and program details

MEN'S LINE DRIVE





STADIUM

Jersey: 345VTMU



STEPS:

- Step 1 - Body / Sleeve (Stealth)
- Step 2 - Inside Stripe (Stealth Tonal)
- Step 3 - Outside Stripe (GT Gold)

Shown with 338LGMP Pant

See page 21 for style and program details



SUM336

Jersey: 345VTMU

STEPS:

Step 1 - Body / Lower Sleeves (Purple)

Step 2 - Upper Sleeves / Underarm Inserts (Gold)

Step 3 - Piping (Gold)

Shown with 33347MK Pant

See page 21 for style and program details





SINGLE

Jersey: 345VTMU

STEPS:

Step 1 - Body (White)

Step 2 - Sleeves (Black)

Step 3 - Around Neck / Down Front and Sleeve Stripe (Soul Blue)

*Stripe is 1 inch up from the sleeve end

Shown with 338LGMK Pant

See page 21 for style and program details



CLASSIC TRIPLE

Jersey: 356S2MU



STEPS:

Step 1 - Body / Sleeves (Maroon)

Step 2 - Neck / Sleeve End Top Stripe (GT Gold)

Step 3 - Neck / Sleeve End Middle Stripe (White)

Step 4 - Neck / Sleeve End Bottom Stripe (GT Gold)

Shown with 338LGMP Pant

See page 21 for style and program details

MEN'S LINE DRIVE





RALLY

Jersey: 356S2MU



STEPS:

Step 1 - Body / Center Sleeve Insert (Dark Green)

Step 2 - Side Panel / Upper Sleeve Inserts (Black)

Step 3 - Lower Sleeve Insert (White)

Shown with 338LGMK Pant

See page 21 for style and program details



OPTION - GROUND RULE

Jersey: 356S2MU



STEPS:

- Step 1 - Front Body (True Red)
- Step 2 - Back Body (Dark Green)
- Step 3 - Sleeves (Dark Green)
- Step 4 - Top Sleeve Stripes (White)
- Step 5 - Bottom Sleeve Stripes (White)

Shown with 338LGMK Pant

See page 21 for style and program details





ACE

Jersey: 357S2MU



STEPS:

Step 1 - Body / Sleeves (Light Old Gold)

Step 2 - Center Stripe / Lower Neck (White)

Step 3 - Outside Stripes / Upper Neck (Black)

Shown with 338LGMP Pant

*Placement 7C is the only Team Name placement that can be used on the Ace Concept.

See page 21 for style and program details



GRAND SLAM

Jersey: 357S2MU



STEPS:

Step 1 - Upper Body / Upper Sleeves (White)

Step 2 - Bottom Body / Center Stripes / Upper Neck (Soul Blue)

Step 3 - Outer Stripes / Lower Neck (Royal)

Shown with 338LGMK Pant

See page 21 for style and program details

MEN'S LINE DRIVE





OPTION - TRIPLE CROWN

Jersey: 357S2MU



STEPS:




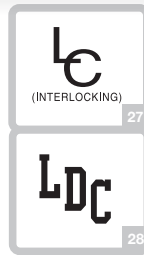
- Step 1 - Front Body (Black)
- Step 2 - Back Body (Black)
- Step 3 - Neck (Black)
- Step 4 - Sleeves (Black)
- Step 5 - Top Sleeve Stripes (White)
- Step 6 - Bottom Sleeve Stripes (Aqua)

Shown with 338LGMK Pant

See page 21 for style and program details



MEN'S LINE DRIVE STYLE DETAILS

Jerseys Sizes: S-XXL Oversize: 3XL 10% upcharge for 3XL **Refer to page 1 for fabric content and color options.	346VTMT <ul style="list-style-type: none"> •Two button placket jersey •New "Diamond Fit" jersey •Set-in sleeves with mesh in the back •Side inserts for better movement during play •Curved hemmed bottom with extended tail •4 Side sew label lower left front •"R RUSSELL" right front chest •Imported 	345VTMU <ul style="list-style-type: none"> •Faux placket pullover jersey •Set in sleeves •Curved hemmed bottom with extended tail •4 Side sew label lower left front •"R RUSSELL" right front chest •Imported 	356S2MU <ul style="list-style-type: none"> •Two button placket with set in sleeves •Curved hemmed bottom •4 Side sew label lower left front •"R RUSSELL" right front chest •Imported 	357S2MU <ul style="list-style-type: none"> •V-Neck jersey with set in sleeves •Curved hemmed bottom •4 Side sew label lower left front •"R RUSSELL" right front chest •Imported
Placements	7 or 8, 10 or 11, and 6	7 or 8, 10 or 11, and 6	7 or 8, 10 or 11, and 6	7 or 8, 10 or 11, and 6 (7C for Ace Concept only)
Decoration Type	Twill (1 or 2 Color)	Sublimation Only	Sublimation Only	Sublimation Only
Pants 338 Sizes: S-XXL Oversize: 3XL 333 Sizes: 28-42 Oversize: 44-52 10% upcharge for 3XL **Refer to page 1 for fabric content and color options.	338LGMP <ul style="list-style-type: none"> •Stretch mesh inserts to allow better range of motion and breathability •2 ¼" ultra-comfortable elastic waistband with silicone gripper, 4 front belt loops, 3 tunnels •Two snap closure with brass zipper and two set-in welted back pockets •Full fit through hips, thigh, and calf area •Double stitched crotch and double knees •Coverseamed back rise, side and inseams •Inseam must be specified (20"-36") •"R RUSSELL" back left hip •Imported 		33353MT <ul style="list-style-type: none"> •2 ½" deluxe elastic waistband with silicone gripper, 4 front belt loops, 3 tunnels •Two snap closure with brass zipper and two set-in buttoned back pockets •Full fit through hips, thigh, and calf area •Double stitched crotch and double knees •Coverseamed back rise, side and inseams •Inseam must be specified, 20"-36" •"R RUSSELL" back left hip •Imported 	
Placements	N/A		N/A	
Decoration Type	1/8" braid		N/A	
Jersey Layouts				
Fonts	FULLBLOCK	<i>Script</i>	ROCK	STINGER

MEN'S SUBLIMATION



**WILLIAMSPORT
RAZZLE**
PAGE 26



STADIUM
PAGE 26



**OPTION
GROUND RULE**
PAGE 27



SPLITTER
PAGE 28



BASE
PAGE 28



SUM3S4
PAGE 29



SUM336
PAGE 29



**CLASSIC
DOUBLE**
PAGE 30



**CLASSIC
TRIPLE**
PAGE 30



LOYALTY
PAGE 31



LEAD OFF
PAGE 31



SINGLE
PAGE 31



CHANGE UP
PAGE 32



SUM389
PAGE 32



**WILLIAMSPORT
RAZZLE** PAGE 33

NEW!



STADIUM
PAGE 33

MEN'S SUBLIMATION



**OPTION-
TRIPLE CROWN**
PAGE 34

NEW!



CHANGE UP
PAGE 35

NEW!



RALLY
PAGE 35

NEW!



SUM336
PAGE 36

NEW!



SUM3S4
PAGE 36



**CLASSIC
TRIPLE**
PAGE 37



LOYALTY
PAGE 37



BASE
PAGE 38



**CLASSIC
TRIPLE**
PAGE 38



OPTION-STITCH
PAGE 39



ACE
PAGE 40



GRAND SLAM
PAGE 40



BASE
PAGE 41



BASE
PAGE 41



**WILLIAMSPORT
RAZZLE**
PAGE 42



SWIPE
PAGE 42



OPTION
PAGE 43



WILLIAMSPORT RAZZLE

Jersey: 345VTSU (Adult) \$116.00
345VTBU (Youth) \$94.00

STEPS:

- Step 1 - Body / Sleeves (Royal)
- Step 2 - Piping (White)
- Step 3 - Sleeve and Body Insert Design (Columbia Blue)
- Step 4 - Side Insert / Sleeve Stripe (Gold)

Shown with 338LGMK Pant

See page 44 for style and program details



STADIUM

Jersey: 345VTSU (Adult) \$116.00
345VTBU (Youth) \$94.00

STEPS:

- Step 1 - Body / Sleeves (Stealth)
- Step 2 - Inside Stripe (Stealth Tonal)
- Step 3 - Outside Stripes (GT Gold)

Shown with 338LGMK Pant

See page 44 for style and program details





OPTION - GROUND RULE

Jersey: 345VTSU (Adult) \$116.00
345VTBU (Youth) \$94.00

STEPS:

- Step 1 - Front Body (True Red)
- Step 2 - Back Body (True Red)
- Step 3 - Sleeves (Navy)
- Step 4 - Top Sleeve Stripes (White)
- Step 5 - Bottom Sleeve Stripes (White)

Shown with 33347MK Pant

See page 44 for style and program details



OPTION - TRIPLE CROWN

STEPS:

- Step 1 - Front Body (Purple)
- Step 2 - Back Body (Purple)
- Step 3 - Sleeves / Stripes (Purple)
- Step 4 - Top Sleeve Stripes (White)
- Step 5 - Bottom Sleeve Stripes (Gold)



OPTION - SLUGGER II

STEPS:

- Step 1 - Front Body (Stealth)
- Step 2 - Back Body (Stealth)
- Step 3 - Sleeves (Stealth)
- Step 4 - Outside Stripes (GT Gold)
- Step 5 - Inside Stripes (Black)



OPTION - STITCH

STEPS:

- Step 1 - Front Body (Aqua)
- Step 2 - Back Body (Aqua)
- Step 3 - Sleeves (Burnt Orange)
- Step 4 - Sleeve Stripes (Aqua)



SPLITTER

Jersey: 345VTSU (Adult) \$116.00
345VTBU (Youth) \$94.00

STEPS:

- Step 1 - Body / Sleeves (Maroon)
- Step 2 - Top Shoulder / Side Inserts (Black)
- Step 3 - Lower Shoulder / Inside Side Inserts (White)

Shown with 338LGMK Pant

See page 44 for style and program details



BASE

Jersey: 345VTSU (Adult) \$116.00
345VTBU (Youth) \$94.00

STEPS:

- Step 1 - Body - Pattern (Solid)
 - Pattern Color 1 - (Columbia Blue)
 - Pattern Color 2 - (N/A)
 - Pattern Color 3 - (N/A)
- Step 2 - Sleeves - Pattern (Camo-Kaze)
 - Pattern 1 - (Navy)
 - Pattern 2 - (Columbia Blue)
 - Pattern 3 - (White)

Shown with 338LGMK Pant

See page 44 for style and program details



SUM3S4

Jersey: 345VTSU (Adult) \$116.00
345VTBU (Youth) \$94.00

STEPS:

- Step 1 - Body & Sleeves (Navy)
- Step 2 - Front & Back Shoulder Inserts (Gold)
- Step 3 - Sleeve End Inserts (Gold)
- Step 4 - Side Inserts (Gold)

Shown with 338LGMK Pant

See page 44 for style and program details



SUM336

Jersey: 345VTSU (Adult) \$116.00
345VTBU (Youth) \$94.00

STEPS:

- Step 1 - Body & Lower Sleeves (Black)
- Step 2 - Upper Sleeves & Underarm Inserts (Solid)
 - Pattern Color 1 - (Cardinal)
 - Pattern Color 2 - (N/A)
 - Pattern Color 3 - (N/A)
- Step 3 - Piping (White)

Shown with 338LGMK Pant

See page 44 for style and program details



CLASSIC DOUBLE

Jersey: 345VTSU (Adult) \$116.00
345VTBU (Youth) \$94.00

STEPS:

- Step 1 - Body & Sleeves (Stealth)
- Step 2 - Around Neck, Down Front and Sleeve Top Stripe (Maroon)
- Step 3 - Around Neck, Down Front and Sleeve Middle Stripe (White)
- Step 4 - Around Neck, Down Front and Sleeve Bottom Stripe (Maroon)

*Stripe is 1 inch up from the sleeve end

Shown with 338LGMK Pant

See page 44 for style and program details



CLASSIC TRIPLE

Jersey: 345VTSU (Adult) \$116.00
345VTBU (Youth) \$94.00

STEPS:

- Step 1 - Body & Sleeves (Giants Cream)
- Step 2 - Neck / Sleeve End Top Stripe (Dark Green)
- Step 3 - Neck / Sleeve Middle Stripe (White)
- Step 4 - Neck / Sleeve Bottom Stripe (Gold)

Shown with 338LGCP Pant

See page 44 for style and program details



LOYALTY

Jersey: 345VTSU (Adult) \$116.00
345VTBU (Youth) \$94.00

STEPS:

Step 1 - Body / Unity Pattern (True Red)

WORD1 (COMPETE)

WORD2 (LEGACY)

WORD3 (CHAMPIONSHIP)

Step 2 - Upper Body / Sleeve Gradient (Black)

Step 3 - Around Neck, Down Front & Sleeve Stripes (Black)

Shown with 338LGMK Pant

See page 44 for style and program details



LEAD OFF

Jersey: 345VTSU (Adult) \$116.00
345VTBU (Youth) \$94.00

STEPS:

Step 1 - Body / Sleeve (White)

Step 2 - Outer Side Panel Stripes / Back Sleeve Inserts (Navy)

Step 3 - Inner Side Panel Stripes / Back Sleeve Inserts
(Columbia Blue)

Shown with 33353CP Pant

See page 44 for style and program details



SINGLE

Jersey: 345VTSU (Adult) \$116.00
345VTBU (Youth) \$94.00

STEPS:

Step 1 - Body (White)

Step 2 - Sleeves (Black)

Step 3 - Around Neck, Down Front, and Sleeve Stripe
(Soul Blue)

*Stripe is 1 inch up from the sleeve end

Shown with 338LGMK Pant

See page 44 for style and program details



CHANGE UP

Jersey: 345VTSU (Adult) \$116.00
345VTBU (Youth) \$94.00

STEPS:

Step 1 - Body & Sleeves (Soul Blue)
 Step 2 - Body & Sleeve Inserts (Solid)
 Pattern Color 1 - (True Red)
 Pattern Color 2 - (N/A)
 Pattern Color 3 - (N/A)

Shown with 333LGCP Pant

See page 44 for style and program details



SUM3B9

Jersey: 345VTSU (Adult) \$116.00
345VTBU (Youth) \$94.00

STEPS:

Step 1 - Front Body (Black)
 Step 2 - Back Body (Gold)
 Step 3 - Sleeves (Gold)
 Step 4 - Shoulder Inserts (Black)
 Step 5 - Front Piping (White)

Shown with 338LGMK Pant

See page 44 for style and program details



WILLIAMSPORT RAZZLE

Jersey: 356S2SU (Adult)	\$68.00
356DPSU (Adult)	\$56.00
356S2BU (Youth)	\$62.00
356DPBU (Youth)	\$50.00

STEPS:

- Step 1 - Body / Sleeves (White)
- Step 2 - Piping (Black)
- Step 3 - Sleeve and Body Insert Design (White Tonal)
- Step 4 - Side Insert / Sleeve Stripe (Gold)

Shown with 338LGMK Pant

See page 44 for style and program details



STADIUM

Jersey: 356S2SU (Adult)	\$68.00
356DPSU (Adult)	\$56.00
356S2BU (Youth)	\$62.00
356DPBU (Youth)	\$50.00

STEPS:

- Step 1 - Body / Sleeves (White)
- Step 2 - Inside Stripe (Dark Green)
- Step 3 - Outside Stripe (Black)

Shown with 338LGMK Pant

See page 44 for style and program details





OPTION - TRIPLE CROWN

Jersey: 356S2SU (Adult)	\$68.00
356DPSU (Adult)	\$56.00
356S2BU (Youth)	\$62.00
356DPBU (Youth)	\$50.00

STEPS:

- Step 1 - Front Body (GT Gold)
- Step 2 - Back Body (GT Gold)
- Step 3 - Sleeves / Stripes (GT Gold)
- Step 4 - Top Sleeve Stripes (White)
- Step 5 - Bottom Sleeve Stripes (Black)

Shown with 338LGMK Pant

See page 44 for style and program details



OPTION - STITCH

STEPS:

- Step 1 - Front Body (Aqua)
- Step 2 - Back Body (Aqua)
- Step 3 - Sleeves (Burnt Orange)
- Step 4 - Sleeve Stripes (Aqua)



OPTION - GROUND RULE

STEPS:

- Step 1 - Front Body (True Red)
- Step 2 - Back Body (Dark Green)
- Step 3 - Sleeves (Dark Green)
- Step 4 - Top Sleeve Stripes (White)
- Step 5 - Bottom Sleeve Stripes (White)



OPTION - SLUGGER II

STEPS:

- Step 1 - Front Body (Texas Orange)
- Step 2 - Back Body (Texas Orange)
- Step 3 - Sleeves (White)
- Step 4 - Outside Stripes (Texas Orange)
- Step 5 - Inside Stripes (White)



CHANGE UP

Jersey: 356S2SU (Adult)	\$68.00
356DPSU (Adult)	\$56.00
356S2BU (Youth)	\$62.00
356DPBU (Youth)	\$50.00

STEPS:

- Step 1 - Body & Sleeves (True Red)
- Step 2 - Body & Sleeve Inserts (Carbon)
 - Pattern Color 1 - (N/A)
 - Pattern Color 2 - (N/A)
 - Pattern Color 3 - (N/A)

Shown with 338LGMK Pant

See page 44 for style and program details



RALLY

Jersey: 356S2SU (Adult)	\$68.00
356DPSU (Adult)	\$56.00
356S2BU (Youth)	\$62.00
356DPBU (Youth)	\$50.00

STEPS:

- Step 1 - Body / Center Sleeve Insert (Dark Green)
- Step 2 - Body Panel / Upper Sleeve Inserts (Black)
- Step 3 - Lower Arm Insert (White)

Shown with 338LGMK Pant

See page 44 for style and program details



SUM336

Jersey:	356S2SU (Adult)	\$68.00
	356DPSU (Adult)	\$56.00
	356S2BU (Youth)	\$62.00
	356DPBU (Youth)	\$50.00

STEPS:

- Step 1 - Body & Lower Sleeves (Purple)
- Step 2 - Upper Sleeves & Underarm Inserts (Flash)
 - Pattern Color 1 - (Gold)
 - Pattern Color 2 - (Gold Tonal)
 - Pattern Color 3 - (N/A)
- Step 3 - Piping (White)

Shown with 338LGMK Pant

See page 44 for style and program details



SUM3S4

Jersey:	356S2SU (Adult)	\$68.00
	356DPSU (Adult)	\$56.00
	356S2BU (Youth)	\$62.00
	356DPBU (Youth)	\$50.00

STEPS:

- Step 1 - Body & Sleeves (Black)
- Step 2 - Front & Back Shoulder Inserts (Laser Yellow)
- Step 3 - Sleeve End Inserts (Laser Yellow)
- Step 4 - Side Inserts (Laser Yellow)

Shown with 338LGBK Pant

See page 44 for style and program details



CLASSIC TRIPLE

Jersey: 356S2SU (Adult)	\$68.00
356DPSU (Adult)	\$56.00
356S2BU (Youth)	\$62.00
356DPBU (Youth)	\$50.00

STEPS:

- Step 1 - Body & Sleeves (Maroon)
- Step 2 - Neck / Sleeve End Top Stripe (GT Gold)
- Step 3 - Neck / Sleeve End Middle Stripe (White)
- Step 4 - Neck / Sleeve End Bottom Stripe (GT Gold)

Shown with 338LGMK Pant

See page 44 for style and program details



LOYALTY

Jersey: 356S2SU (Adult)	\$68.00
356DPSU (Adult)	\$56.00
356S2BU (Youth)	\$62.00
356DPBU (Youth)	\$50.00

STEPS:

- Step 1 - Body / Unity Pattern (True Red)
 - WORD1 (COMPETE)
 - WORD2 (LEGACY)
 - WORD3 (CHAMPIONSHIP)
- Step 2 - Upper Body / Sleeve Gradient (Black)
- Step 3 - Sleeve Stripes (Black)

Shown with 338LGMK Pant

See page 44 for style and program details



BASE

Jersey:	356S2SU (Adult)	\$68.00
	356DPSU (Adult)	\$56.00
	356S2BU (Youth)	\$62.00
	356DPBU (Youth)	\$50.00

STEPS:

- Step 1 - Body - Pattern (Solid)
 - Pattern Color 1 - (Columbia Blue)
 - Pattern Color 2 - (N/A)
 - Pattern Color 3 - (N/A)
- Step 2 - Sleeves - Pattern (Camo-Kaze)
 - Pattern Color 1 - (Navy)
 - Pattern Color 2 - (Columbia Blue)
 - Pattern Color 3 - (White)

Shown with 338LGMK Pant

See page 44 for style and program details



CLASSIC TRIPLE

Jersey:	357S2SU (Adult)	\$68.00
	357S2BU (Youth)	\$62.00

STEPS:

- Step 1 - Body / Sleeves (GT Gold)
- Step 2 - Neck / Sleeve End Top Stripe (Navy)
- Step 3 - Neck / Sleeve End Middle Stripe (White)
- Step 4 - Neck / Sleeve End Bottom Stripe (Navy)

Shown with 338LGMK Pant

See page 45 for style and program details



OPTION - STITCH

Jersey: 357S2SU (Adult) \$68.00
357S2BU (Youth) \$62.00

STEPS:

- Step 1 - Front Body (Columbia Blue)
- Step 2 - Back Body (Columbia Blue)
- Step 3 - Neck (True Red)
- Step 4 - Sleeves (True Red)
- Step 5 - Sleeve Stripes (Columbia Blue)

Shown with 338LGBK Pant

See page 45 for style and program details



OPTION - GROUND RULE

STEPS:

- Step 1 - Front Body (Black)
- Step 2 - Back Body (Black)
- Step 3 - Neck (Gold)
- Step 4 - Sleeves (Gold)
- Step 5 - Top Sleeve Stripes (White)
- Step 6 - Bottom Sleeve Stripes (White)



OPTION - TRIPLE CROWN

STEPS:

- Step 1 - Front Body (Black)
- Step 2 - Back Body (Black)
- Step 3 - Neck (Black)
- Step 4 - Sleeves (Black)
- Step 5 - Top Sleeve Stripes (White)
- Step 6 - Bottom Sleeve Stripes (Aqua)



OPTION - SLUGGER II

STEPS:

- Step 1 - Front Body (White)
- Step 2 - Back Body (Texas Orange)
- Step 3 - Neck (Black)
- Step 4 - Sleeves (Texas Orange)
- Step 5 - Outside Stripes (White)
- Step 6 - Inside Stripes (Black)



ACE

Jersey: 357S2SU (Adult) \$68.00
357S2BU (Youth) \$62.00

STEPS:

- Step 1 - Body / Sleeves (Light Old Gold)
- Step 2 - Center Stripe / Lower Neck (White)
- Step 3 - Outside Stripes / Upper Neck (Black)

Shown with 338LGMP Pant

***Placement 7C is the only Team Name placement that can be used on the Ace concept.**

See page 45 for style and program details



GRAND SLAM

Jersey: 357S2SU (Adult) \$68.00
357S2BU (Youth) \$62.00

STEPS:

- Step 1 - Upper Body / Upper Sleeves (White)
- Step 2 - Bottom Body / Center Stripes / Upper Neck (Black)
- Step 3 - Outer Stripes / Lower Neck (Gold)

Shown with 338LGMP Pant

See page 45 for style and program details



BASE

Jersey: 357S2SU (Adult) \$68.00
357S2BU (Youth) \$62.00

STEPS:

- Step 1 - Body & Sleeves - Pattern (Pinstripe)
 - Pattern Color 1 - (White)
 - Pattern Color 2 - (Dark Green)
 - Pattern Color 3 - (N/A)
- Step 2 - Neck - Pattern (Solid)
 - Pattern Color 1 - (Dark Green)
 - Pattern Color 2 - (N/A)
 - Pattern Color 3 - (N/A)

Shown with 33353MT Pant

See page 45 for style and program details



BASE

Jersey: 684S2SU (Adult) \$48.00
684S2BU (Youth) \$44.00

STEPS:

- Step 1 - Body (Camo-Kaze)
 - Pattern Color 1 - (Kelly)
 - Pattern Color 2 - (Kelly Tonal)
 - Pattern Color 3 - (Black)
- Step 2 - Sleeves and Neck (Solid)
 - Pattern Color 1 - (Black)
 - Pattern Color 2 - (N/A)
 - Pattern Color 3 - (N/A)

Shown with 33347MK Pant

See page 45 for style and program details



WILLIAMSPORT RAZZLE

Jersey: 684S2SU (Adult) \$48.00
684S2BU (Youth) \$44.00

STEPS:

- Step 1 - Body / Sleeves (White)
- Step 2 - Piping (Black)
- Step 3 - Sleeve and Body Insert Design (White Tonal)
- Step 4 - Side Insert / Sleeve Stripe (Gold)
- Step 5 - Neck (White)

Shown with 338LGMK Pant

See page 45 for style and program details



SWIPE

Jersey: 684S2SU (Adult) \$48.00
684S2BU (Youth) \$44.00

STEPS:

- Step 1 - Body Diagonal Stripes Color 1 - (Light Orange)
- Step 2 - Body Diagonal Stripes Color 2 - (Burnt Orange)
- Step 3 - Body Diagonal Stripes Color 3 - (Burnt Orange)
- Step 4 - Sleeves (Navy)
- Step 5 - Neck (Navy)

Shown with 33347MK Pant

See page 45 for style and program details



OPTION - SLUGGER II

Jersey: 684S2SU (Adult) \$48.00
684S2BU (Youth) \$44.00

STEPS:

- Step 1 - Front Body (Black)
- Step 2 - Back Body (Black)
- Step 3 - Neck (Texas Orange)
- Step 4 - Sleeves (Black)
- Step 5 - Outside Sleeves (Texas Orange)
- Step 6 - Inside Stripe (White)

Shown with 33347MK Pant

See page 45 for style and program details



OPTION - GROUND RULE

STEPS:

- Step 1 - Front Body (True Red)
- Step 2 - Back Body (True Red)
- Step 3 - Neck (Dark Green)
- Step 4 - Sleeves (Dark Green)
- Step 5 - Top Sleeve Stripes (True Red)
- Step 6 - Bottom Sleeve Stripes (White)



OPTION - TRIPLE CROWN

STEPS:

- Step 1 - Front Body (Aqua)
- Step 2 - Back Body (Aqua)
- Step 3 - Neck (Black)
- Step 4 - Sleeves (Aqua)
- Step 5 - Top Sleeve Stripes (Black)
- Step 6 - Bottom Sleeve Stripes (White)



OPTION - STITCH

STEPS:

- Step 1 - Front Body (Black)
- Step 2 - Back Body (Black)
- Step 3 - Neck (True Red)
- Step 4 - Sleeves (True Red)
- Step 5 - Sleeve Stripes (Black)

MEN'S SUBLIMATION STYLE DETAILS

ADULT JERSEYS Sizes: S-XXL Oversize: 3XL 10% upcharge for 3XL **Refer to page 1 for fabric content and color options.	345VTSU – Adult Faux Placket Sublimated Jersey <ul style="list-style-type: none">•Faux Placket•Set in sleeves•Curved hemmed bottom with extended tail•4 Side sew label lower left front•“R RUSSELL” right front chest•Imported	356__SU – Adult Two Button Placket Sublimated Jersey <ul style="list-style-type: none">•Two button placket jersey with set in sleeves•Curved hemmed bottom•4 Side sew label lower left front•“R RUSSELL” right front chest•Imported
Placements	3, 6, 6L, 7, 8, 9, 10, 11, 32, 35, BN	3, 6, 7, 8, 9, 10, 11, 32, 35, BN
Decoration Type	Sublimation or Twill *Normal twill charges will apply	Sublimation
Decoration Pricing	Four locations included in the price \$5.00 charge for each additional decoration placement \$5.00 additional charge for player name	
YOUTH JERSEYS Sizes: M-XL (345) S-XL (356) **Refer to page 1 for fabric content and color options.	345VTBU – Youth Faux Placket Sublimated Jersey <ul style="list-style-type: none">•Faux Placket•Set in sleeves•Curved hemmed bottom with extended tail•4 Side sew label lower left front•“R RUSSELL” right front chest•Imported	356__SU – Youth Two Button Placket Sublimated Jersey <ul style="list-style-type: none">•Two button placket jersey with set in sleeves•Curved hemmed bottom•4 Side sew label lower left front•“R RUSSELL” right front chest•Imported
Placements	3, 6, 6L, 7, 8, 9, 10, 11, 32, 35, BN	3, 6, 7, 8, 9, 10, 11, 32, 35, BN
Decoration Type	Sublimation or Twill *Normal twill charges will apply	Sublimation
Decoration Pricing	Four locations included in the price \$5.00 charge for each additional decoration placement \$5.00 additional charge for player name	

Fabric Options	VT	DP	S2
	92% polyester 8% spandex	100% polyester	94% polyester 6% spandex

PRICING					
ADULT JERSEYS	Description	Sizes	VT	DP	S2
345VTSU	Adult Faux Placket Sublimated Jersey	Sizes: S-XXL Oversize: 3XL 10% upcharge for 3XL	\$116.00	N/A	N/A
356__SU	Adult Two Button Placket Sublimated Jersey		N/A	\$56.00	\$68.00
YOUTH JERSEYS	Description	Sizes	VT	VH	S2
345VTBU	Youth Faux Placket Sublimated Jersey	Sizes: M-XL	\$94.00	N/A	N/A
356__BU	Youth Two Button Placket Sublimated Jersey	Sizes: S-XL	N/A	\$50.00	\$62.00

MEN'S SUBLIMATION STYLE DETAILS

ADULT JERSEYS 357 Sizes: S-XXL 357 Oversize: 3XL 684 Sizes: S-XXL 684 Oversize: 3XL 10% upcharge for 3XL **Refer to page 1 for fabric content and color options.	357S2SU – Adult V-Neck Sublimated Jersey <ul style="list-style-type: none">•V-Neck jersey with set in sleeves•Curved hemmed bottom•4 Side sew label lower left front•“R RUSSELL” right front chest•Imported	684S2SU – Adult Sublimated Loose-Fit Raglan Jersey <ul style="list-style-type: none">•Moisture wicking fabric•Self-material collar•Self-material shoulder yokes•Two-needle hemmed armholes and curved bottom•“R RUSSELL” at outer center back neck•“R RUSSELL” jock tag lower left front•Imported
Placements	3, 6, 7, 8, 9, 10, 11, 32, 35, BN (7C for Ace Concept only)	3, 6, 7, 8, 9, 10, 11, 32, 35, BN
Decoration Type	Sublimation	Sublimation
Decoration Pricing	Four locations included in the price \$5.00 charge for each additional decoration placement \$5.00 additional charge for player name	
YOUTH JERSEY Sizes: S-XL **Refer to page 1 for fabric content and color options.	357S2BU – Youth V-Neck Sublimated Jersey <ul style="list-style-type: none">•V-Neck jersey with set in sleeves•Curved hemmed bottom•4 Side sew label lower left front•“R RUSSELL” right front chest•Imported	684S2BU – Youth Sublimated Loose-Fit Raglan Jersey <ul style="list-style-type: none">•Moisture wicking fabric•Self-material collar•Self-material shoulder yokes•Two-needle hemmed armholes and curved bottom•“R RUSSELL” at outer center back neck•“R RUSSELL” jock tag lower left front•Imported
Placements	3, 6, 7, 8, 9, 10, 11, 32, 35, BN (7C for Ace Concept only)	3, 6, 7, 8, 9, 10, 11, BN, 32, 35
Decoration Type	Sublimation	Sublimation
Decoration Pricing	Four locations included in the price \$5.00 charge for each additional decoration placement \$5.00 additional charge for player name	

Fabric Options	S2
	94% polyester 6% spandex

PRICING			
ADULT JERSEYS	Description	Sizes	S2
357S2SU	Adult V-Neck Sublimated Jersey	Sizes: S-XXL Oversize: 3XL 10% upcharge for 3XL	\$68.00
684S2SU	Adult Sublimated Loose Fit Raglan Jersey		\$48.00
YOUTH JERSEYS	Description	Sizes	S2
357S2BU	Youth V-Neck Sublimated Jersey	Sizes: S-XL	\$62.00
684S2BU	Youth Sublimated Loose Fit Raglan Jersey		\$40.00

MEN'S SUBLIMATION



WILLIAMSPORT RAZZLE

SACRIFICE

BASE

LOYALTY

WILLIAMSPORT RAZZLE



MVP

SKIPPER

ENDURANCE

BASE

LOYALTY



WILLIAMSPORT RAZZLE

Jersey: 358S2SU (Adult) \$65.00

STEPS:

Step 1 - Body / Sleeves (Royal)

Step 2 - Body, Neck and Gusset Insert (Royal Tonal)

Shown with 33347MK Pant

See page 53 for style and program details



SACRIFICE

Jersey: 358S2SU (Adult) \$65.00

STEPS:

Step 1 - Body (Gold)

Step 2 - Sleeves (Gold)

Step 3 - Neck / Top Stripe (Dark Green)

Step 4 - Lower Stripe (Baseball Grey)

Step 5 - Underarm Gusset (Dark Green)

Shown with 338LGМК Pant

See page 53 for style and program details



BASE

Jersey: 358S2SU (Adult) \$65.00

STEPS:

Step 1 - Body - Pattern (Hold That Tiger)

Pattern Color 1 - (Burnt Orange)

Pattern Color 2 - (Burnt Orange Tonal)

Pattern Color 3 - (N/A)

Step 2 - Neck, Sleeves and Underarm Gusset - Pattern (Hold That Tiger)

Pattern Color 1 - (Burnt Orange)

Pattern Color 2 - (Burnt Orange Tonal)

Pattern Color 3 - (N/A)

Shown with 33347MK Pant

See page 53 for style and program details



LOYALTY

Jersey: 358S2SU (Adult) \$65.00

STEPS:

Step 1 - Body / Unity Pattern (True Red)

WORD1 - (COMPETE)

WORD2 - (LEGACY)

WORD3 - (CHAMPIONSHIP)

Step 2 - Upper Body / Back Upper Body Gradient (Black)

Step 3 - Sleeves, Neck & Underarm Gusset (Black)

Shown with 338LGMK Pant

See page 53 for style and program details



WILLIAMSPORT RAZZLE

Jersey: 813JASU (Adult) \$70.00
813JABU (Youth) \$60.00

STEPS:

- Step 1 - Body / Sleeves (Royal)
- Step 2 - Piping (White)
- Step 3 - Sleeve and Body Insert Design (Royal Tonal)
- Step 4 - Side Insert / Sleeve Stripe (Columbia Blue)
- Step 5 - Neck (Columbia Blue)

Shown with 33347MK Pant

See page 53 for style and program details



MVP

Jersey: 813JASU (Adult) \$70.00
813JABU (Youth) \$60.00

STEPS:

- Step 1 - Body and Sleeves (Royal)
- Step 2 - Front and Back Body Inserts (Black)
- Step 3 - Piping (Gridiron Silver)
- Step 4 - Neck (Black)

Shown with 338LGMK Pant

See page 53 for style and program details





SKIPPER

Jersey: 813JASU (Adult) \$70.00
813JABU (Youth) \$60.00

STEPS:

- Step 1 - Body / Sleeve (Columbia Blue)
- Step 2 - Neck (True Red)
- Step 3 - Sleeve Insert Inside Stripe (True Red)
- Step 4 - Sleeve Insert Middle Stripe (White)
- Step 5 - Sleeve Insert Outer Stripe (True Red)

Shown with 33347MK Pant

See page 53 for style and program details



ENDURANCE

Jersey: 813JASU (Adult) \$70.00
813JABU (Youth) \$60.00

STEPS:

- Step 1 - Body & Sleeves (Navy)
- Step 2 - Shoulder, Side, and Back Inserts (GT Gold)
- Step 3 - Neck (Navy)

Shown with 338LGMK Pant

See page 53 for style and program details



BASE

Jersey: 813JASU (Adult) \$70.00
813JABU (Youth) \$60.00

STEPS:

Step 1 - Body - Pattern (Solid)
 Pattern Color 1 - (Dark Green)
 Pattern Color 2 - (N/A)
 Pattern Color 3 - (N/A)
 Step 2 - Neck and Sleeves - Pattern (Digital Camo)
 Pattern Color 1 - (Dark Green)
 Pattern Color 2 - (Baseball Grey)
 Pattern Color 3 - (White)

Shown with 33347MK Pant

See page 53 for style and program details



LOYALTY

Jersey: 813JASU (Adult) \$70.00
813JABU (Youth) \$60.00

STEPS:

Step 1 - Body / Unity Pattern (True Red)
 WORD1 - (COMPLETE)
 WORD2 - (LEGACY)
 WORD3 - (CHAMPIONSHIP)
 Step 2 - Upper Back Body Gradient (Black)
 Step 3 - Sleeves (Black)
 Step 4 - Neck (Black)

Shown with 338LGMK Pant

See page 53 for style and program details

MEN'S SUBLIMATION STYLE DETAILS

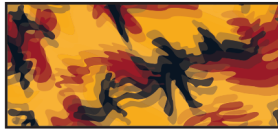
ADULT TOPS Sizes: S-XXL Oversize: 3XL 10% upcharge for 3XL **Refer to page 1 for fabric content and color options.	358S2SU – Adult ¾" Sleeve Sublimated Baseball Shirt •Dri-Power moisture wicking fabric •Underarm gusset for comfort and mobility •VH Cloth on back for breathability and mobility •Three needle coverstitch on all insert seams •"R RUSSELL" right front chest •Imported	813JASU – Adult Sublimated Fleece Pullover •Set in sleeves •Set in ½" self material collar •4 Side sew label lower left front •"R RUSSELL" right front chest •Imported
Placements	3, 6, 7, 8, 9, 10, 11, BN	3, 6, 7, 8, 9C, 10, 11, 32, 35, BN
Decoration Type	Sublimation	Sublimation
Decoration Pricing	Three locations included in the price \$5.00 charge for each additional decoration placement \$5.00 additional charge for player name	
YOUTH TOPS Sizes: S-XL **Refer to page 1 for fabric content and color options.	358S2BU – Youth ¾" Sleeve Sublimated Baseball Shirt •Dri-Power moisture wicking fabric •Underarm gusset for comfort and mobility •VH Cloth on back for breathability and mobility •Three needle coverstitch on all insert seams •"R RUSSELL" right front chest •Imported	813JABU – Youth Sublimated Fleece Pullover •Set in sleeves •Set in ½" self material collar •4 Side sew label lower left front •"R RUSSELL" right front chest Imported
Placements	3, 6, 7, 8, 9, 10, 11, BN	3, 6, 7, 8, 9C, 10, 11, 32, 35, BN
Decoration Type	Sublimation	Sublimation
Decoration Pricing	Four locations included in the price \$5.00 charge for each additional decoration placement \$5.00 additional charge for player name	

Fabric Options	JA	S2
	100% polyester mesh	94% polyester 6% spandex

PRICING				
ADULT JERSEYS	Description	Sizes	S2	JA
358S2SU	Adult ¾" Sleeve Sublimated Baseball Shirt	Sizes: S-XXL Oversize: 3XL 10% upcharge for 3XL	\$65.00	N/A
813JASU	Adult Sublimated Fleece Pullover		N/A	\$70.00
YOUTH TOPS	Description	Sizes	S2	JA
358S2BU	Youth ¾" Sleeve Sublimated Baseball Shirt	Sizes: S-XL	\$55.00	N/A
813JABU	Youth Two Button Placket Sublimated Jersey		N/A	\$60.00

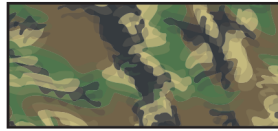
Sublimated Stock Patterns

CAMO-KAZE



COLOR 1 ■ COLOR 2 ■ COLOR 3 ■

COMBAT-KAZE



COLOR AS IS

STARS & STRIPES



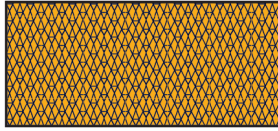
COLOR AS IS

ROCK



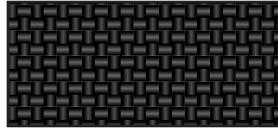
COLOR 1 ■ TONAL

APEX



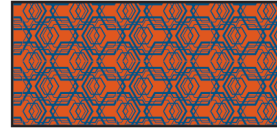
COLOR 1 ■ COLOR 2 ■

CARBON



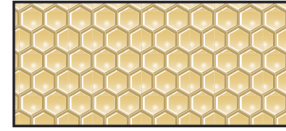
COLOR AS IS

HEXAGON



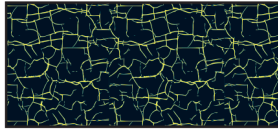
COLOR 1 ■ COLOR 2 ■

THE HIVE



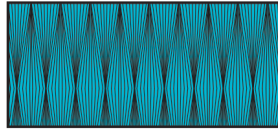
COLOR 1 ■ TONAL/WHITE

FLASH



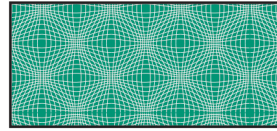
COLOR 1 ■ COLOR 2 ■

TENSION



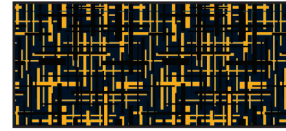
COLOR 1 ■ COLOR 2 ■

SHOCKWAVE



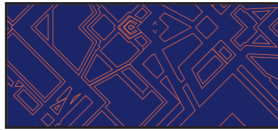
COLOR 1 ■ COLOR 2 ■

MATRIX



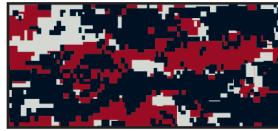
COLOR 1 ■ COLOR 2 ■

CIRCUIT



COLOR 1 ■ COLOR 2 ■

DIGITAL CAMO



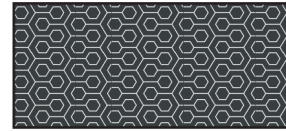
COLOR 1 ■ COLOR 2 ■ COLOR 3 ■

DRILL



COLOR 1 ■ COLOR 2 ■ COLOR 3 ■

HONEYCOMB



COLOR 1 ■ COLOR 2 ■

TRIBAL TIGER



COLOR 1 ■ COLOR 2 ■

LEOPARD



COLOR 1 ■ COLOR 2 ■

HOLD THAT TIGER



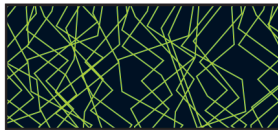
COLOR 1 ■ COLOR 2 ■

AWARENESS



COLOR 1 ■ COLOR 2 ■

LIGHTNING



COLOR 1 ■ COLOR 2 ■

SOLID



COLOR 1 ■

PINSTRIPES



COLOR 1 ■ COLOR 2 ■

Team / Fashion Colors Sublimation Guide (Baseball, Softball, Track, Performance, and Sideline)

	TEAM COLORS																								FASHION COLORS									
	Aqua	Baseball Grey	Black	Blazer Gold	Burnt Orange	Cardinal	Columbia Blue	Dark Green	Giants Cream	Gold	Grid Iron Silver	GT Gold	Kelly	Light Old Gold	Light Orange	Maroon	Navy	Purple	Royal	Seal Brown	Soul Blue	Stealth	Texas Orange	True Red	White	Army Camo Green	Army Camo Grey	Army Camo Tan	Watermelon Pink	Diamond Pink	Electric Green	Lavender Haze	Laser Yellow	Techno Green
SUB COLORS																																		
TONAL COLOR 1																										N/A	N/A	N/A						

These colors are only offered in sublimated garments.

FABRIC #	DESCRIPTION
DP	100% Polyester 4.0 oz. sq. yd - White Only
72	91% Polyester/9% Spandex 7.2 oz. sq. yd - White Only
V2	92% Polyester/8% Spandex 5.5 oz. sq. yd. - White Only

FABRIC #	DESCRIPTION
VT	92% Polyester/8% Spandex 6.9 oz. sq. yd - White Only
S2	91% Polyester/9% Spandex 5.5 oz. sq. yd - White Only



**COLLEGIATE,
RECREATIONAL, PRACTICE...**

WE'VE GOT YOU COVERED



RUSSELL ATHLETIC

SUBLIMATED

BASEBALL



SPECIAL ORDER



SET-IN SLEEVE BUTTON FRONT JERSEY

345VTCT - VT Cloth

\$100.00

345LGCT - LG Cloth

\$90.00

Sizes: S-XXL Oversize: 3XL

- Full button front
- Set-in sleeves
- Two-needle hemmed bottom with extended tail
- 4 Side sew label lower left front
- "R RUSSELL" center back neck
- Imported

Options:

Self-Material Nameplate	\$8.00
ID Tags	\$4.00
1/8" Braid around neck/down front	\$12.00
1/2" Braid around neck/down front	\$13.00
1/8" Braid 1" up from sleeve ends	\$8.00
1/2" Braid 1" up from sleeve ends	\$9.00
1/2" Braid on sleeve ends	\$9.00
1" Braid on sleeve ends	\$10.00
1 1/2" Braid on sleeve ends	\$11.00
2" Braid on sleeve ends	\$12.00
1/2" Braid on neck edge	\$10.00
1/2" Braid across shoulder and down sleeve	\$12.00
+2" Body length	\$4.00
+4" Body length	\$7.00
+6" Body length	\$8.50
-1" Sleeve length	\$4.00
-2" Sleeve length	\$4.00
+1" - 4" Sleeve length	\$4.00

Decoration Type: Screen Print/Embroidery/Twill

Decoration Placements:

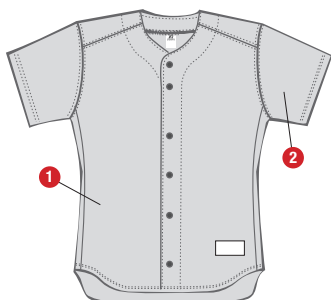
3, 6, 7, 8, 9, 10, 11, 32, 35, BN, N4

Screen Print not available on placement #7

Notes: 10% Up charge for oversize 3XL

MEN'S SPECIAL ORDER

STEPS



STEPS	AS SHOWN
Step 1: Body	White
Step 2: Sleeves	White

OPTIONS



R RUSSELL
Logo on back neck



R RUSSELL
Logo on back neck

ADULT BUTTON FRONT BASEBALL JERSEY

343VTCT - VT Cloth

\$100.00



Sizes: S-XXL Oversize: 3XL

- Full button
- Raglan sleeves
- Curved hemmed bottom with extended tail
- 4 Side sew label lower left front
- "R RUSSELL" center back neck
- Imported

Options:

Self-Material Nameplate	\$8.00
ID Tags	\$4.00
1/8" Braid 1" up from sleeve ends	\$8.00
1/2" Braid 1" up from sleeve ends	\$9.00
1/2" Braid on sleeve ends	\$9.00
1" Braid on sleeve ends	\$10.00
1 1/2" Braid on sleeve ends	\$11.00
1/8" Braid around neck/down front	\$12.00
1/2" Braid around neck/down front	\$13.00
1/2" Braid on neck edge	\$10.00
1/2" Braid across shoulder and down sleeve	\$12.00
+2" Body length	\$4.00
+4" Body length	\$7.00
+6" Body length	\$8.50
- 1" Sleeve length	\$4.00
- 2" sleeve length	\$4.00
+1" - +4" Sleeve length	\$4.00

Decoration Type:

Screen Print/Embroidery/Twill

Decoration Placements:

3, 6, 6L, 7, 8, 9, 10, 11, 32, 35, BN, N4

Screen Print not available on placement #7

Screen Print is only available for placement BN

Notes:

Stock version: Adult 34347MK

10% Up charge for size 3XL

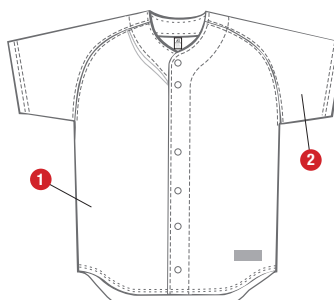


OPTIONS



Logo on
back neck

STEPS



STEPS

Step 1:
Body

Step 2:
Sleeves

AS SHOWN

White

White



FULL BUTTON FRONT SLEEVELESS JERSEY

340VTCT - VT Cloth

\$92.00

Sizes: S-XXL Oversize: 3XL

- Full button front
- Sleeveless
- Curved hemmed bottom with extended tail
- 4 Side sew label lower left front
- "R RUSSELL" center back neck
- Imported

Decoration Type:

Self-Material Nameplate	\$8.00
ID Tags	\$4.00
1/8" Braid around neck/front	\$12.00
1/2" Braid around neck/down front	\$13.00
1/8" Braid on armhole opening	\$8.00
1/2" Braid on armhole opening	\$9.00
1/2" Braid on neck edge	\$10.00
+2" Body length	\$4.00
+4" Body length	\$7.00
+6" Body length	\$8.50

Decoration Type:

Screen Print/Embroidery/Twill

Decoration Placements:

3, 6, 6L, 7, 8, 9, 10, 11, BN, N4

Screen Print not available in placement #7

Screen Print is only available in placement BN

Notes:

10% Up charge for oversize 3XL

MEN'S SPECIAL ORDER

STEPS



STEPS

Step 1:
Body

AS SHOWN

Black

OPTIONS



RELAXED "DIAMOND FIT SERIES" PANT WITH MESH INSERTS

338LGCP - LG Cloth

\$110.00

Sizes: S-XXL Oversize: 3XL

- Stretch Mesh Inserts to allow better range of motion and breathability
- 2 1/4" Ultra comfortable elastic waistband with silicone gripper, 4 front belt loops, 3 tunnels
- Two snap closure with brass zipper and two set-in welted back pockets
- Full fit through hips, thigh and calf area
- Double stitched crotch and double knees
- Coverseamed back rise, side and inseams
- Standard 32" inseam
- "R RUSSELL" back left
- Imported

Options:

ID Tags	\$4.00	+1" Inseam	\$4.00
1/8" Braid down sides	\$6.00	+2" Inseam	\$4.00
1/8" Material piping (sideseam)	\$6.00	+3" Inseam	\$7.00
1/2" Braid down sides	\$10.00	+4" Inseam	\$7.00
1" Braid down sides	\$12.00	-1" Inseam	\$4.00
1 1/2" Braid down sides	\$15.00	-2" Inseam	\$4.00
Hem leg bottom w/ elastic	\$8.00	-3" Inseam	\$4.00
+1" Front/back/rise	\$5.00	-4" Inseam	\$4.00
+2" Front/back/rise	\$8.50	-5" Inseam	\$4.00
+1" Seat width	\$5.00	-6" Inseam	\$4.00
+2" Seat width	\$8.50	-7" Inseam	\$4.00
		-8" Inseam	\$4.00

Notes:

Stock version: 338LGMK

See measurement page for specification detail

10% Upcharge for oversize 3XL



OPTIONS



FRONT VIEW

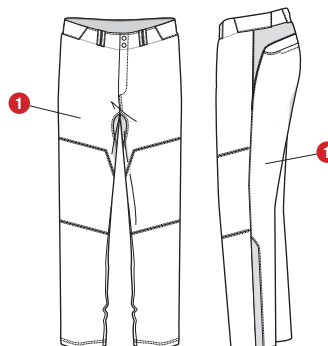


SIDE VIEW



BACK VIEW

STEPS



STEPS

Step 1:
Body

AS SHOWN

White



DELUXE RELAXED FIT PANT

33347CP - 47 Cloth
333LGCP - LG Cloth

\$120.00
\$105.00

Sizes: 28-46 Oversize: 48-52

- 2 ½" deluxe elastic waistband with silicone gripper
- 4 belt loops and three tunnels
- Double knees
- Full fit through hips, thigh and calf area
- Concealed two-snap closure with brass zipper
- Two set-in back pockets with buttons
- Double stitched crotch
- Hemmed leg bottom
- Coverseamed back rise and side seams
- Standard 32" inseam
- "R RUSSELL" back left hip
- Imported

Options:

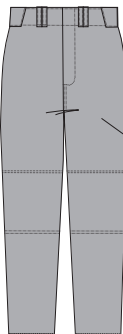
ID Tags	\$4.00		
1/8" Braid down sides	\$6.00	+1" Inseam	\$4.00
1/2" Braid down sides	\$10.00	+2" Inseam	\$4.00
1" Braid down sides	\$12.00	+3" Inseam	\$7.00
1 ½" Braid down sides	\$15.00	+4" Inseam	\$7.00
Hem leg bottom w/ elastic	\$8.00	+5" Inseam	\$8.50
+1" Front/back/rise	\$5.00	+6" Inseam	\$8.50
+2" Front/back/rise	\$8.50	+7" Inseam	\$10.00
+1" Seat width	\$5.00	+8" Inseam	\$10.00
+2" Seat width	\$8.50	-1" thru -12" Inseam	\$4.00

Notes:

See measurement page for specification detail
10% Up charge for oversize 48; 20% Up charge for oversize 50-52

MEN'S SPECIAL ORDER

STEPS



STEPS

Step 1:
Body

AS SHOWN

Baseball
Grey

OPTIONS



DELUXE HUSKY CUT BASEBALL PANT

33147HP - 47 Cloth

\$120.00



Sizes: 28-46 Oversize: 48-52

- Husky Cut pattern
- Two-snap closure
- 2 ½" deluxe elastic waistband with silicone gripper
- 4 belt loops and three tunnels
- Deluxe fly construction with brass zipper
- Double stitched crotch
- Coverseamed back rise and sideseam
- Two double welt set-in back pockets
- Double knee
- Elastic leg hem
- Standard 28" inseam
- "R RUSSELL" back left hip
- Imported

Options:

ID Tags	\$4.00	-1" Waist	\$5.00
1/8" Braid down sides	\$6.00	-2" Waist	\$5.00
1/2" Braid down sides	\$10.00	+1" Inseam	\$4.00
1" Braid down sides	\$12.00	+2" Inseam	\$4.00
1 ½" Braid down sides	\$15.00	+3" Inseam	\$7.00
+1" Front/back/rise	\$5.00	+4" Inseam	\$7.00
+2" Front/back/rise	\$8.50	+5" Inseam	\$8.50
+1" Seat width	\$5.00	+6" Inseam	\$8.50
+2" Seat width	\$8.50	+7" thru +12" Inseam	\$10.00
+3" Seat width	\$8.50	-1" thru -8" Inseam	\$4.00

Notes:

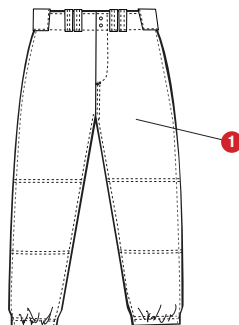
10% Up charge for oversize 54-56; 20% Up charge for oversize 58



OPTIONS



STEPS



STEPS

Step 1:
Body

AS SHOWN

White

2017 MEN'S BASE HIT

STOCK DECORATED PROGRAM



3R6X2MK (Adult)
3R6X2BK (Youth)



629X2M1 (Adult)
629X2B1 (Youth)



3R8X2MK (Adult)
3R8X2BK (Youth)

PROGRAM DATES:

1/9/2017 - 6/26/2017

TURN TIME:

Uniforms will be delivered 12-15 Business Days from order date

NEW ORDERS:

Minimum of 15 pieces per style, color and decoration

DECORATION:

Jerseys:

1 or 2 Color Russcote

Includes Team Name and Front and Back Numbers

Fonts - Team Name Available in Script with Tailsweep, Script,

Full Block, Times Bold, Stinger

Numbers Available in Full Block, Times Bold, Stinger

Placements:

Team Name Placements: 7

Numbers: 4" Front Number PL# 10 or 11 and 6" or 8" Back

Number PL# 6





The **QUICK** Service Provider For
All Your Diamond Needs

FAST. RELIABLE. SERVICE.



**SUBLIMATED QUICK
TURN PROGRAM**

ARRIVES IN 17-20 BUSINESS DAYS

**BASE HIT STOCK
DECORATED PROGRAM**

ARRIVES IN 12-15 BUSINESS DAYS

**QUICK TURN BRAIDED
PANTS PROGRAM**

ARRIVES IN 7-10 BUSINESS DAYS

**CONTACT YOUR RUSSELL TEAM
DEALER FOR PRODUCT AND
PROGRAM DETAILS**



STOCK BASEBALL

RUSSELL ATHLETIC

QUICK TURN BRAID PROGRAM

3 HIGH QUALITY BASEBALL PANTS
20 PREMIUM TEAM COLOR BRAID OPTIONS
SHIPS IN 5 WORKING DAYS!!!



\$91.00

33347MK

**ADULT RELAXED FIT
BASEBALL PANT**



**ADULT
\$50.00**

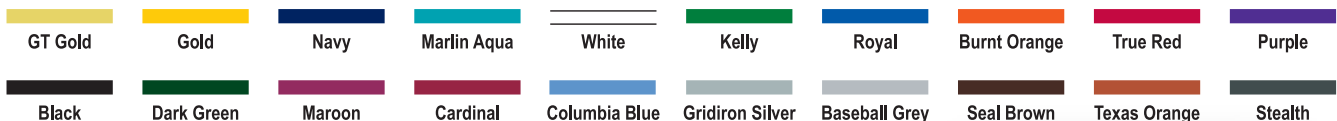
**YOUTH
\$40.00**

338LG MK/BK

**ADULT & YOUTH DIAMOND FIT
BASEBALL PANT**

PROGRAM DETAILS

- 1 Braid Type: 106 - 1/8" - Pattern 0
- Colors: 20 Current Stock Colors



- Hem length can be specified on 33347MK
- No minimums but normal up-charges will apply for orders less than 6 units
- Order Entry Catalog: Under the Factory Stock Tab called, "Quick Turn Braid Program"
- Normal discounts and terms apply
- Program Starts 1/18/16

*** PRICES ABOVE ARE RETAIL PRICES THAT
INCLUDE THE PRICE FOR 1/8" BRAID**





ADULT FAUX PLACKET PULLOVER JERSEY

343VTM1 - VT Cloth

\$50.00

- 92% Nylon / 8% Spandex - Colors
- 92% Polyester / 8% Spandex - White

Adult Sizes: S-XXL



- Faux placket pullover jersey
- Raglan sleeve and coverseamed armholes
- Curved hemmed bottom with extended tail
- 4 Side sew label lower left front
- "R RUSSELL" left sleeve
- Imported

Options:

1/8" Braid around neck and down front	\$12.00
1/2" Braid around neck and down front	\$13.00
1/8" Braid 1" up from sleeve ends	\$8.00
1/2" Braid 1" up from sleeve end	\$9.00
1/2" Braid on sleeve end	\$9.00
1" Braid on sleeve end	\$10.00

Decoration Type: Screen Print/Embroidery/Twill

Decoration Placements:

3, 6, 6L, 7N*, 8, 8Y, 9, 10, 11, 32, 35, BN*, N4

*Screen Print not available on placement 7N

*Screen Print ONLY for placement BN

Notes: Faux placket pullover jersey – sewn placket allows for cleaner twill decoration by eliminating gapping between buttons.



COLORS



BG7
Baseball Grey

BLK
Black

CRD
Cardinal

DGR
Dark Green

MAR
Maroon

NAV
Navy

PUR
Purple

ROY
Royal

TRR
True Red

WHI
White

PERFORMANCE TWO BUTTON PLACKET JERSEY



3R6X2MK - X2 Cloth
 3R6X2BK - X2 Cloth (Youth)
 - 100% Polyester Interlock

\$24.00
 \$22.00

Adult Sizes: S-XXL Oversize: 3XL Youth Sizes: S-XL

- Two button placket jersey with set-in sleeves
- Self-material piping in the insert
- HS Cloth in side and upper shoulder insert for more breathability
- Curved hemmed bottom
- Pad print label at inside center back neck
- Neck taping with Russell Athletic branded
- "R RUSSELL" left sleeve
- Imported

**Decoration Type:**

Screen Print

Decoration Placements:

*3, 6, 6L, 8, 9, 10, 11, 32, 35, BN

*Placement 3 is not offered on Youth

Notes:

Low bleed ink recommended

10% up charge for 3XL



COLORS



BWH Black/ Baseball Grey	BOW Burnt Orange/ Baseball Grey	COW Columbia Blue/ Baseball Grey	CWH Cardinal/ Baseball Grey	DWH Dark Green/ Baseball Grey	GWH Gold/ Baseball Grey	MWH Maroon/ Baseball Grey	NWH Navy/ Baseball Grey	PWH Purple/ Baseball Grey	ROW Royal/ Baseball Grey	TRW True Red/ Baseball Grey
--------------------------------	---------------------------------------	--	-----------------------------------	-------------------------------------	-------------------------------	---------------------------------	-------------------------------	---------------------------------	--------------------------------	-----------------------------------



TWO BUTTON SOLID PLACKET JERSEY

3R7X2MK - X2 Cloth

\$18.00

3R7X2BK - X2 Cloth (Youth)

\$16.00

- 100% Polyester Interlock

Adult Sizes: S-XXL Oversize: 3XL Youth Sizes: S-XL

- Moisture wicking fabric
- Self-material collar
- Two button placket with set-in sleeves
- Curved hemmed bottom
- "R RUSSELL" left sleeve logo
- Imported

Options:

1/8" Braid 1" up from Sleeve End

\$8.00

1/2" Braid 1" up from Sleeve End

\$9.00

Decoration Type:

Screen Print

Decoration Placements:

3, 6, 7, 8, 9, 10, 11, 32, 35, BN

Notes:

Low bleed ink recommended

10% upcharge for 3XL

COLORS



BG7
Baseball Grey

BLK
Black

BOR
Burnt Orange

CRD
Cardinal

CBU
Columbia Blue

DGR
Dark Green

GLD
Gold

MAR
Maroon

NAV
Navy

PUR
Purple

ROY
Royal

TRR
True Red

WHI
White

PERFORMANCE V-NECK BASEBALL JERSEY

3R8X2MK - X2 Cloth

\$24.00

3R8X2BK - X2 Cloth (Youth)

\$22.00

- 100% Polyester Interlock

Adult Sizes: S-XXL Oversize: 3XL Youth Sizes: S-XL

- Moisture wicking fabric
- V-neck self-material neck
- White Front to a color back body to give more of a custom look
- Three-needle coverstitch on all insert seams
- "R RUSSELL" on left sleeve
- Imported

Decoration Type:

Screen Print

Decoration Placements:

3, 6, 7, 8, 9, 10, 11, 32, 35, BN



COLORS

WBK
White/
BlackWBG
White/
Burnt OrangeWCO
White/
Columbia BlueWCS
White/
CardinalWDG
White/
Dark GreenWGL
White/
GoldWHM
White/
MaroonWNA
White/
NavyWPU
White/
PurpleWRO
White/
RoyalWTR
White/
True Red



CORE PERFORMANCE TEE

629X2M1 - Adult

\$13.50

629X2B1 - Youth

\$11.50

X2 Cloth 4.1 oz./sq. yd.

Adult Sizes: S-4XL

Youth Sizes: S-XL

- 100% Polyester Jersey
- Moisture wicking fabric
- Self-material collar
- Contrast back neck tape (stealth on all colors)
- Set-in sleeves
- Two-needle hemmed sleeve openings and straight bottom
- "R RUSSELL" on left sleeve end
- Imported

Decoration Type:

Embroidery/Screen Print

Decoration Placements: 6, 7, 8, 9, 9C, 10, 11, BN

COLORS



*AQU
Aqua

BLK
Black

*BOR
Burnt
Orange

CBU
Columbia
Blue

CRD
Cardinal

DGR
Dark Green

*GAT
GT Gold

GLD
Gold

MAR
Maroon

NAV
Navy

PUR
Purple

ROY
Royal

SHL
Stealth

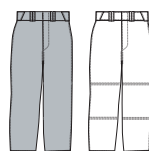
STE
Steel

TRR
True Red

WHI
White

HZC
Lime Punch

*Adult Only

BG7
Baseball
GreyWHI
White**DELUXE RELAXED FIT PANT****33347MK** - 47 Cloth**\$85.00**

-100% Nylon Stretch Double Knit

Sizes: 28-42 Oversize: 44-48

- 2 1/2" deluxe elastic waistband with silicone gripper, 4 front belt loops, 3 tunnels
- Two snap closure with brass zipper and two set-in buttoned back pockets
- Full fit through hips, thigh and calf area
- Double stitched crotch and double knees
- Coverseamed back rise, side and inseams
- Standard inseam: 37" un-hemmed (Inseam must be specified: 20"-36")
- Price includes the cost to hem length
- "R RUSSELL" back left hip
- Imported

Options:

1/8" Braid down sides	\$6.00
1/2" Braid down sides	\$10.00
1" Braid down sides	\$12.00
1 1/2" Braid down sides	\$15.00
Hemmed leg end	N/C
Hemmed leg bottom with elastic	N/C

NOTES:

Fuller cut pant

Custom Pant version: 33347CP

10% Upcharge for oversize 44-48

**RELAXED "DIAMOND FIT SERIES" PANT WITH MESH INSERTS****338LGMK** - LG Cloth**\$44.00****338LGBK** - LG Cloth**\$34.00**

-100% Stretch Polyester Double Knit

Sizes: Adult: S-XXL Oversize: 3XL Youth S-XL

- Stretch mesh inserts to allow better range of motion and breathability
- 2 1/4" Ultra comfortable elastic waistband with silicone gripper, 4 front belt loops, 3 tunnels
- Two snap closure with brass zipper and two set-in welted back pockets
- Full fit through hips, thigh and calf area
- Double stitched crotch and double knees
- Coverseamed back rise, side and inseams
- Hemmed boot cut
- "R RUSSELL" back left
- Imported

Options:

1/8" Braid down sides	\$6.00
1/2" Braid down sides	\$10.00
1" Braid down sides	\$12.00
1 1/2" Braid down sides	\$15.00
Knicker Length	\$8.00

Notes: 3XL is 10% upcharge, Custom Pant Hookup:

338LGCP



Adult Graded Inseams	Youth Graded Inseams
S - 31"	S - 27"
M - 32"	M - 28"
L - 33"	L - 29"
XL - 33"	XL - 30"
XXL - 34"	
3XL - 35"	

BG7
Baseball
GreyWHI
White



BASEBALL PIPED OPEN BOTTOM GAME PANT

233L2MK - L2 Cloth

\$30.00

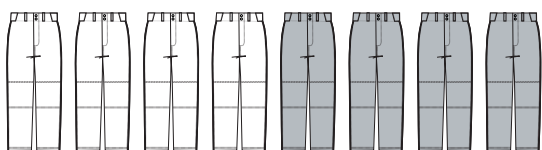
233L2BK - L2 Cloth

\$28.00

-100% Polyester Stretch Double Knit

Sizes: Adult: S-XXL Youth S-XL

- 2 1/2" deluxe elastic waistband with 4 front belt loops, single belt loops centered over 2 set-in back pockets and 3 tunnels
- Concealed two snap closure with brass zipper
- Double stitched crotch and double knees
- Coverseamed back rise and side seams
- Hemmed open bottom
- Adult Standard Inseam: Size S-31", M-32", L-33", XL-33", XXL-34"
- Youth Standard Inseam: Size S-28", M-29", L-30", XL-31"
- "R RUSSELL" back left hip
- Imported



WBK
White/
Black

WNA
White/
Navy

WRO
White/
Royal

WTR
White/
True
Red

B9B
Baseball
Grey/
Black

B9N
Baseball
Grey/
Navy

B9R
Baseball
Grey/
Royal

B9T
Baseball
Grey/
True
Red



BOOT CUT GAME PANT

234DBMK - DB Cloth

\$24.00

234DBBK - DB Cloth (Youth)

\$21.00

- 100% Polyester Double Knit

Adult Sizes: S-XXL Youth Sizes: XS-XL

- 2 1/2" deluxe elastic waistband with 4 front belt loops, single belt loops centered over 2 set-in back pockets and 3 tunnels
- Concealed two snap closure with brass zipper
- Double stitched crotch and double knees
- Coverseamed back rise and side seams
- Hemmed boot cut
- Adult Standard Inseam: Size S-30", M-31", L-32", XL-33", XXL-34"
- Youth Standard Inseam: Size XS-26", S-27", M-28", L-29", XL-30"
- "R RUSSELL" back left hip
- Imported

Options:

1/8" Braid down sides

\$6.00

1/2" Braid down sides

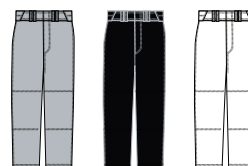
\$10.00

1" Braid down sides

\$12.00

NOTES:

Boot Cut



BG7
Baseball
Grey

BLK
Black

WHI
White



BASEBALL GAME PANT

236DBMK – DB Cloth \$21.00
 236DBBK – DB Cloth – Youth \$19.00
 - 100% Polyester Double Knit

Adult Sizes: S-XXL
 Youth Sizes: XS-XL

- 2" deluxe elastic waistband with one set-in back pocket
- 2 front belt loops and 3 tunnels
- Two snap closure with brass zipper
- Double stitched crotch and double knees
- Coverseamed back rise
- Elastic leg hem
- Adult Standard Inseam: Size S-28", M-29", L-30", XL-31", XXL-32"
- Youth Standard Inseam: Size XS-24", S-25", M-26", L-27", XL-28"
- "R RUSSELL" back left hip
- Imported

Options:

1/8" Braid down sides \$6.00
 1/2" Braid down sides \$10.00
 1" Braid down sides \$12.00



BG7 Baseball Grey
 BLK Black
 NAV Navy
 WHI White



SHORT SLEEVE PULLOVER

872RVMK - RV Cloth \$40.00
 872RVBK - RV Cloth (Youth) \$35.00
 - 100% Polyester Woven

Adult Sizes: S-XXL Oversize: 3XL Youth Sizes: S-XL

- Very lightweight breathability fabric
- Moisture wicking capability
- Full cut body with quarter zip neck to go over uniform
- Waist has shock cord with cord lock on wearers left
- 4 side sew label lower left front
- "R RUSSELL" left sleeve end
- Imported

Decoration Type:
 Embroidery/Twill

Decoration Placements:
 7C, 8, 9, 32, 35, BN, N4



BWK Black/White
 CWH Cardinal/White
 DGW Dark Green/White
 MWH Maroon/White
 NWH Navy/White
 PWH Purple/White
 ROW Royal/White
 TRW True Red/White
 XDE White/Stealth

* Youth is only available in these colors



LONG SLEEVE PULLOVER

875QXMK - QX Cloth
100% Polyester

CLOSEOUT: \$32.00

Sizes: S-XXL Oversize: 3XL

- Dri-Power® moisture wicking fabric
- Full cut body with quarter zip neck
- Body and sleeves, 100% Polyester with mechanical stretch
- Underarm inserts, upper back inserts, and sleeve binding (100% Polyester with mechanical stretch)
- Waist has shock cord with cord lock on wearer's left
- 4 side sew label lower left front
- 3/8" stretch binding at sleeve end
- "R RUSSELL" center back neck
- Imported

Decoration Type:

Screenprint, Embroidery, Twill

Decoration Placements:

1, 3, 6, 7, 7C, 8, 9, 10, 11, 32, 35, 36, BN

INVENTORY ONLY



DUGOUT JACKET

814LRMK - LR Cloth

CLOSEOUT: \$75.00

100% Texturized Nylon Polyester Fill Lining

Sizes: S-XXL Oversize: 3XL

- Water resistant
- Full snap front (covered metal snaps)
- Polyester fill diamond quilted lining
- Raglan sleeves
- 1/8" contrast start and stop piping at front and back raglan seams
- Contrasting side panels
- Solid rib knit collar, cuff and bottom band
- Single welt front pockets
- "R RUSSELL" Center back neck
- Imported

Decoration Type:

Embroidery, Twill

Decoration Placements:

3, 7, 8, 9, 32, 35

INVENTORY ONLY



ADJUSTABLE BASEBALL BELT

BBBELTA (Adult)

\$7.00

BBBELTY (Youth)

\$7.00

Sizes: OSFA; Adjustable 32"-46" (Adult)

Sizes: OSFA; Adjustable 18"-32" (Youth)

- 1 ½" Wide elastic belt
- Metal adjustable slide
- Metal buckle
- Coated split leather tab
- "R RUSSELL" embossed on tab
- Imported

Notes: Replaces the BBBELT0

Reduced width for a better fit on youth baseball pants



"R" Russell logo color is tonal as shown in image

RUSSELL ATHLETIC PERFORMANCE SOCKS



SOCKS

NEW



COLOR OFFERING

UUA	Black/White/Gray
ATJ	Burnt Orange/White/Black
CWB	Cardinal/White/Black
DHB	Dark Green/White/Black
ATK	Maroon/White/Stealth
ATF	Navy/White/Stealth
ATH	Purple/White/Stealth
RWK	Royal/White/Black
TWB	True Red/White/Black
ATI	Watermelon Pink/White/Stealth
HSK	White/Stealth/Black

SHOE SIZE			
SIZE	YOUTH	WOMEN'S	MEN'S
S	3Y-5Y		
M	5Y-7Y	4-6	6-8
L		6-10	8-12
XL		11-13	12-15

RUSSELL "P & R" CREW SOCK RTS01C1

\$8.50 per pair

- Sold in packs of single packs
- 92% Polyester; 6% Rubber; 2% Spandex – White
- 84% Polyester; 10% Nylon; 5% Rubber; 1% Spandex – Colors
- 11 Color offerings
- Moisture management
- Arch support
- Reinforced toe
- Mesh on top of foot for ventilation
- Half cushion sole
- Made in China

SHOE SIZE			
SIZE	YOUTH	WOMEN'S	MEN'S
XS	3-6		
S	5-8		
M		4-6	6-8
L		6-10	8-12
XL		11-15	12-16

COLOR OFFERING

SVF	Aqua/White
BWH	Black/White
BOW	Burnt Orange/White
CWH	Cardinal/White
COW	Columbia Blue/White
DWI	Dark Green/White
GOB	Gold/Black
KWH	Kelly/White
MWH	Maroon/White
NWH	Navy/White
PWH	Purple/White
ROW	Royal/White
TRW	True Red/White
WMW	Watermelon Pink/White
GTK	GT Gold/Black
XDE	White/Stealth

RUSSELL ALL SPORT SOCK RTS01AS

\$9.00 per pair

- Colors: 84% Polyester, 11% Nylon, 3% Rubber, 2% Spandex
- White: 95% Polyester, 3% Rubber, 2% Spandex
- Sizes XS-XL
- 16 color offering
- Left & right Indicator on foot (All Sport Sock Only)
- Sizing on inside rim of sock
- Moisture management
- Arch and ankle support
- Reinforced toe
- Mesh on top of foot for ventilation
- Half cushion sole
- Sold in retail packaging in pairs; 12 pairs equal dozen

INVENTORY ONLY



RUSSELL CREW SOCK RTS03AQ

\$16.50 per 3-pack

- 57% Polyester, 26% Cotton, 10% Nylon, 6% Rubber, 1% Spandex-White and Colors
- Size M-XL
- 2 color offering
- Moisture management
- Arch support
- Reinforced toe
- Mesh on top of foot for ventilation
- Half cushion sole
- Retail Packaging

COLOR OFFERING

BWH	Black/White
XDE	White/Stealth

INVENTORY ONLY

RUSSELL LOW CUT SOCK RTS03MP

\$14.50 per 3-pack

- 54% Polyester, 28% Cotton, 12% Olefin, 5% Rubber, 1% Spandex-White and Colors
- Size M-XL
- 2 color offering
- Moisture management
- Arch support
- Reinforced toe
- Mesh on top of foot for ventilation
- Half cushion sole
- Retail Packaging

COLOR OFFERING

BWH	Black/White
XDE	White/Stealth

INVENTORY ONLY

RUSSELL QUARTER SOCK RTS03WP

\$14.50 per 3-pack

- 54% Polyester, 28% Cotton, 12% Olefin, 5% Rubber, 1% Spandex-White and Colors
- Size M-XL
- 2 color offering
- Moisture management
- Arch support
- Reinforced toe
- Mesh on top of foot for ventilation
- Half cushion sole
- Retail Packaging

COLOR OFFERING

BWH	Black/White
XDE	White/Stealth

INVENTORY ONLY

NEW

SHOE SIZE			
SIZE	YOUTH	WOMEN'S	MEN'S
XS	3-6		
S	5-8		
M		4-6	6-8
L		6-10	8-12
XL		11-15	12-16

COLOR OFFERING

BWH	Black/White
BOW	Burnt Orange/White
CWH	Cardinal/White
COW	Columbia Blue/White
DWI	Dark Green/White
GOB	Gold/Black
KWH	Kelly/White
MWH	Maroon/White
NWH	Navy/White
PWH	Purple/White
ROW	Royal/White
TRW	True Red/White
WMW	Watermelon Pink/White
GTK	GT Gold/Black
XDE	White/Stealth

RUSSELL ALL SPORT SOCK RTS01A1

\$9.50 per pack

- 88% Polyester, 7% Nylon, 4% Rubber, 1% Spandex
- 15 color offering
- Left & right indicator on foot (All Sport Sock Only)
- Sizing on inside rim of sock
- Moisture management
- Arch and ankle support
- Reinforced toe
- Mesh on top of foot for ventilation
- Half cushion sole
- Sold in retail packaging in pairs; 12 pairs equal dozen

NEW! Odor Management Technology - "Silvadur™"



ADVANCED ATHLETIC PROTECTION™

XTREME MOTION™
PATENT PENDING

BIKE XTREME MOTION™ PROTECTIVE CUP

BACU05 - Adult

\$16.00

SIZES: Adult (NS)
COLOR CODE: GRN

- Provides moderate protection
- Made of one component that provides both firmness and flexibility
- Excellent for infielders, wrestlers, lacrosse... etc.
- Lighter for better comfort and mobility
- More ventilation than standard cups
- Fits all BIKE® garments requiring a cup
- Patent pending
- Imported

INVENTORY ONLY

INNOVATIVE MATERIAL

- :: Made from lightweight 100% EVA providing ample support and protection for the athlete all the while allowing enough flexibility for maximum mobility while playing almost any sport.

TARGETED FOR

- :: Primarily targeted to infielders and outfielders, wrestlers and other athletes who may need protection from injury but needing complete freedom of motion.

KEY BENEFITS

- :: Vents allow air to easily flow in and out to keep the athlete cool
- :: The innovative flexible, one-piece EVA material provides the perfect combination of comfort and protection for the athlete, while allowing maximum mobility during any athletic activity.
- :: Lighter in weight than standard plastic cup



BIKE® PRO-EDITION™ CUP

BACU01 - Adult	\$10.00
BTCU01 - Teen	\$9.50
BYCU01 - Youth	\$9.50
BPCU01 - Pee Wee	\$9.00

SIZES: Adult (NS); Teen (NS); Youth (NS); Tee Ball (NS)
COLOR CODE: BLK (Adult); ROY (Teen); SCL (Youth); GRN (Pee Wee)

- Protection for athletes in high impact sports.
- 100% increased ventilation
- Anti-microbial finish to fight odor
- Soft edges for maximum mobility
- Fits all BIKE® garments requiring a cup
- Color coded by size
- Imported

INVENTORY ONLY

HIGHEST PROTECTION

- :: The wave shape of the cup was structurally engineered to prevent cracking, while providing the ultimate in ventilation.

BEST PERFORMANCE

- :: Kinetic properties of the wave design allow the soft TPE to move with the body, and allow you to perform at your peak.

DESIGNED TO

- :: Align perfectly with the athlete's body creating the most protection while providing maximum comfort to allow athletes to perform at their peak.

KEY BENEFITS

- :: Increases ventilation
- :: Anti-microbial finish to fight odor
- :: Soft edges for mobility

BIKE® PERFORMANCE COTTON™ PEE WEE BRIEF COMBO - INCLUDES CUP



BPC027 - Pee Wee **\$16.50**
 - 86% Polyester, 14% Spandex
 - Pouch: 100% Polyester
Sizes: Pee Wee - XS **Color Code:** WHI

- Protection for athletes in high impact sports
- 95% Cotton; 5% Spandex; Pouch exterior: 100% Polyester; Interior 100% Polyester Dri-Power®
- Dri-Power® moisture wicking fabric cup pouch
- 1-12" standard waistband with content jock tag
- **PRO-EDITION™** cup included
- Imported

INVENTORY ONLY

BIKE® PERFORMANCE ELITE™ BOXER INCLUDES CUP POCKET



BACP31 - Adult **\$23.00**
 - Body - 86% Polyester, 14% Spandex
 - Pouch: 100% Polyester
Sizes: Adult (S-XL) **Color Code:** GRY

- Moisture wicking fabric
- Odor prevention properties added
- Dri-Power® moisture wicking fabric cup pouch
- 1½" push waistband with jock tag
- Cup not included
- Imported

INVENTORY ONLY

BIKE® PERFORMANCE ELITE™ CUP STRAP ONLY



BACP11 - Adult **\$11.00**
 - Body - 86% Polyester, 14% Spandex
Sizes: Adult (S-XXL) **Color Code:** GRY

- Moisture wicking fabric
- Odor prevention properties added
- Dri-Power® moisture wicking fabric cup pouch
- 2" push waistband with jock tag. 3/4" Leg straps
- Cup not included
- Imported

INVENTORY ONLY

RUSSELL DUAL-LAYERED SLIDING SHORT WITH CUP POCKET



RASL35 - Adult **\$28.50**
RYSL35 - Youth **\$26.50**
Sizes: Adult (S-XXL) Youth (S-XL) **Color Code:** WHI

- 85% Nylon; 15% Spandex
- Dual layered fabric on side panels for additional protection against strawberries or abrasions
- Cup pocket made in moisture management fabric
- Odor management properties
- 1-1/2" "Russell" branded plush elastic waistband with jock tag
- Mid-thigh length
- Imported

INVENTORY ONLY

BIKE® PERFORMANCE COTTON™ SWIM/JOGGER SUPPORTER



BASJ17B - Adult (2 Unit Pack) **\$13.00**
Sizes: Adult (S-XXL) **Color Code:** WHI

- Athletic supporters are designed to support, protect, fight fatigue and reduces risk of strains
- Performance support with the feel of cotton
- Pouch: 55% Nylon; 25% Rubber; 20% Cotton
- 1" standard elastic waistband with fabric content label
- 3/4" Leg strap
- Supporter pouch - **NOT A CUP POUCH**

INVENTORY ONLY

BIKE® PERFORMANCE COTTON™ STRAP SUPPORTER



BASP17 - Adult (Single Pack) **\$7.00**
BASP17B - Adult (2 Unit Pack) **\$12.50**
BADZ17 - Adult (Schoolpack) **\$75.60 DZ**
Sizes: Adult (S-XXL) Teen (M-L)
 *3XL in BADZ17 School Pack only
Color Code: BLK, WHI (Adult); WHI only (Teen/Youth)

- Athletic supporters are designed to help support, protect, fight fatigue and reduces risk of strains
- Performance support with the feel of cotton
- Pouch: 55% Nylon; 25% Rubber; 20% Cotton
- 2" standard elastic waistband with fabric content label
- 3/4" Leg strap
- School Pack- Sold in dozens per size
- Supporter pouch - **NOT A CUP POUCH**

INVENTORY ONLY

BIKE® PERFORMANCE COTTON™ BOXER NO FLY FRONT



7131 - Adult **\$22.00**
 - 86% Polyester, 14% Spandex
Sizes: Adult (S-XXL) **Color Code:** BLK, HGY, WHI

- Designed to provide athletes with functional support and compression
- Designed for everyday wear or game day performance
- 95% Cotton; 5% Spandex
- Mid-length for reduced chaffing
- No-fly front
- 1½" elastic waistband for comfort and better fit

INVENTORY ONLY



The **QUICK** Service Provider For
All Your Diamond Needs

FAST. RELIABLE. SERVICE.



**SUBLIMATED QUICK
TURN PROGRAM**

ARRIVES IN 17-20 BUSINESS DAYS

**BASE HIT STOCK
DECORATED PROGRAM**

ARRIVES IN 12-15 BUSINESS DAYS

**QUICK TURN BRAIDED
PANTS PROGRAM**

ARRIVES IN 7-10 BUSINESS DAYS

**CONTACT YOUR RUSSELL TEAM
DEALER FOR PRODUCT AND
PROGRAM DETAILS**

SPRING 17 BASEBALL

Color & Fabrics	3
-----------------------	---

BASEBALL**MEN'S LINE DRIVE**

345VTMU Single	14
345VTMU Stadium	12
345VTMU SUM336	13
345VTMU Williamsport Razzle	11
346VTMT	10
356S2MU Classic Triple	15
356S2MU Option - Ground Rule	17
356S2MU Rally	16
357S2MU Ace	18
357S2MU Grand Slam	19
357S2MU Option -Triple Crown	20
Baseball Intro	4-5
Purdue Story	6-7
Line Drive Program	8-9
Line Drive Style Details	21

MEN'S SUBLIMATION

345 Base	28
345 Change Up	32
345 Classic Double	30
345 Classic Triple	30
345 Lead Off	31
345 Loyalty	31
345 Option	27
345 Single	31
345 Splitter	28
345 Stadium	26
345 SUM336	29
345 SUM3B9	32
345 SUM3S4	29
345 Williamsport Razzle	26
356 Base	38
356 Change Up	35
356 Classic Triple	37
356 Loyalty	37
356 Option	34
356 Rally	35
356 Stadium	33
356 SUM336	36
356 SUM3S4	36
356 Williamsport Razzle	33
357 Ace	40
357 Base	41
357 Classic Triple	38
357 Grand Slam	40
357 Option	39
684 Base	41
684 Option	43
684 Swipe	42
684 Williamsport Razzle	42
Style Details	44-45
Sublimation Intro	22-25

SUB PERFORMANCE & OUTERWEAR

358 Base	49
358 Loyalty	49
358 Sacrifice	48
358 Williamsport Razzle	48
813 Base	52
813 Endurance	51
813 Loyalty	52
813 MVP	50
813 Skipper	51
813 Williamsport Razzle	50
Stock Patterns/Colors	54
Style Details	53
Sublimation Intro	46-47

SPECIAL ORDER

33147HP	62
33347CP	61
333LGCP	61
338LGCP	60
340VTCT	59
343VTCT	58
345LGCT	57
345VTCT	57

MEN'S STOCK

Men's Base Hit Program	63
Quick Turn Program	64

JERSEYS

343VTM1	67
3R6X2BK	68
3R6X2MK	68
3R7X2BK	69
3R7X2MK	69
3R8X2BK	70
3R8X2MK	70
629X2B1	71
629X2M1	71

PANTS

233L2BK	73
233L2MK	73
234DBBK	73
234DBMK	73
236DBBK	74
236DBMK	74
33347MK	72
338LGBK	72
338LGMK	72

BATTER'S TOPS

814LRMK	75
872RVBK	74
872RVMK	74
875QXMK	75

ACCESSORIES

BBBELTA	76
BBBELTY	76
Socks	77

RUSSELL PROTECTIVE

7131	79
BACP11	79
BACP31	79
BACU05	78
BACU01	78
BADZ17	79
BASJ17B	79
BASP17	79
BASP17B	79
BPC027	79
BPCU01	78
BTCU01	78
BYCU01	78
RASL35	79
RYSL35	79



SPRING 2017

BASEBALL

**VISIT TEAM.RUSSELLATHLETIC.COM
TO DESIGN YOUR OWN UNIFORM AND VIEW THE ENTIRE
RUSSELL LINE OF APPAREL AND EQUIPMENT**

**TO CONTACT RUSSELL ATHLETIC
CUSTOMER SERVICE, CALL**

PHONE: 1-888-606-5520
FAX: 1-877-729-4800

**TO ORDER IN-STOCK EXPRESS
STYLES, CALL**

PHONE: 1-888-606-5517
FAX: 1-888-259-6557

**DEALERS ORDER IN-STOCK EXPRESS OR
CUSTOM TEAMWEAR STYLES ONLINE:**

<https://portal.russellathletic.com>



[Facebook.com/Russellathletic](https://www.facebook.com/Russellathletic)



Check out the NEW Russell Athletic
Uniform Builder for iPad.