



**RUSSELL
ATHLETIC**



2017

WAREHOUSE

**OVER 100 YEARS AGO, RUSSELL ATHLETIC WAS BORN ON THE
PLAYING FIELDS OF AMERICA. NOW, IN AN ERA OF DECREASING
TEAM SPORTS PARTICIPATION AND INCREASING EGO, HYPE AND
SELFISHNESS, THE BRAND IS BACK TO BECOME THE EXPERT AND
DEFENDER OF TEAM SPORTS. INSTITUTIONAL SPORTS. THE
BIRTHPLACE OF TEAM. WHERE ATHLETES PLAY FOR EACH OTHER,
THEIR COACH AND THEIR TOWN. WHERE TEAM NEVER STOPS.**



TEAM ON

FLEECE 2017



BLK
BlackNAV
NavyOXF
OxfordBRH
Birch**PRO10 FLEECE CREW****10CRJM0****\$55.00**83% Cotton / 17% Polyester
12.5 OZ / 424 GSM

Sizes: S-XXL

Oversize: 3XL-4XL

- Ring Spun Yarn, provides a soft comfortable feel.
- Premium Heavy weight 3 End Fleece, helps provide additional warmth.
- Anti Pill, ensures an always smooth and comfortable feel.
- 1x1 rib with spandex, collar, side inserts, cuffs, and band for added stretch and recovery for a great fit.
- 2-ply rib side panels and undersleeve gusset for greater range of movement.
- Imported.

Decoration Type:

Screen Print, Embroidery, Twill

Decoration Placements:

6, 7, 8, 9

PRO10 FLEECE PULLOVER HOOD**10HRJM0****\$60.00**83% Cotton / 17% Polyester
12.5 OZ / 424 GSM

Sizes: S-XXL

Oversize: 3XL-4XL

- Ring Spun Yarn, provides a soft comfortable feel.
- 3 End Fleece, helps provide additional warmth.
- Anti Pill, ensures an always smooth and comfortable feel.
- Front Muff Pocket, for phone and media storage.
- 2 panel, 2 ply hood, delivers additional protection from the elements.
- 1x1 rib with spandex, collar, side inserts, cuffs, and band for added stretch and recovery for a great fit.
- 2 ply rib side panels and undersleeve gusset for greater range of movement.
- Imported.

Decoration Type:

Screen Print, Embroidery, Twill

Decoration Placements:

7, 8, 9, 36

BLK
BlackNAV
NavyOXF
OxfordBRH
Birch**PRO10 FLEECE PANT****10PRJM0****\$55.00**83% Cotton / 17% Polyester
12.5 OZ / 424 GSM

Sizes: S-XXL

Oversize: 3XL-4XL

- Ring Spun Yarn, provides a soft comfortable feel.
- 3 End Fleece, helps provide additional warmth.
- Anti Pill, ensures an always smooth and comfortable feel.
- Elastic Waistband With Chunky Knit Drawcord, for an adjustable comfort fit.
- 1x1 ribbed welt pockets.
- Imported.

Decoration Type:

Screen Print, Embroidery, Twill

Decoration Placements:

17, 18

BLK
BlackNAV
NavyOXF
OxfordBRH
Birch



NEW

MEN'S COTTON RICH FLEECE PULLOVER HOOD

82HNSM0

\$37.50

Heathers: 66% Cotton / 34% Polyester
Medium Grey Heather: 75% Cotton / 25% Polyester
Ash: 82% Cotton / 18% Polyester
8.5 OZ / 288 GSM

Sizes: XS-XXL

Oversize: 3XL-4XL

- Ring Spun Yarn, delivers a soft comfortable feel.
- 3 End Fleece, helps provide additional warmth.
- Anti Pill, ensures an always smooth and comfortable feel.
- Zippered Front Muff Pocket, for phone & media storage.
- Two-ply hood with grommets, for additional protection from the elements.
- "R" logo at Left Sleeve.
- Imported.

Decoration Type:

Screen Print, Embroidery, Twill

Decoration Placements:

7, 8, 9, 36, 6M

A7I Charcoal Grey Heather A7J Medium Grey Heather ZM7 Blue Heather H5N Navy Heather



HWZ Green Heather H3Y Red Heather H5L Purple Heather 951 Ash

MEN'S COTTON RICH FLEECE POCKET PANT

NEW

82PNSM0

\$30.00

Heathers: 66% Cotton / 34% Polyester
Medium Grey Heather: 75% Cotton / 25% Polyester
Ash: 82% Cotton / 18% Polyester
8.5 OZ / 288 GSM

Sizes: S-XXL

Oversize: 3XL-4XL

- Ring Spun Yarn, delivers a soft comfortable feel.
- 3 End Fleece, helps provide additional warmth.
- Anti Pill, ensures an always smooth and comfortable feel.
- Side Entry Pockets, plus Hidden Media Pocket, for additional media storage.
- Imported.

Decoration Type:

Screen Print, Embroidery

Decoration Placements:

18



951 Ash

H5N Navy Heather

A7I Charcoal Grey Heather

7J Medium Grey Heather





MEN'S COTTON RICH FLEECE CREW

NEW

82CNSMO

\$30.00

Heathers: 66% Cotton / 34% Polyester

Medium Grey Heather: 75% Cotton / 25% Polyester

Ash: 82% Cotton / 18% Polyester

8.5 OZ / 288 GSM

Sizes: XS-XXL

Oversize: 3XL-4XL

- Ring Spun Yarn, delivers a soft comfortable feel.
- 3 End Fleece, helps provide additional warmth.
- Anti Pill, ensures an always smooth and comfortable feel.
- Zippered Front Muff Pocket, for phone & media storage.
- "R" logo at Left Sleeve.
- Imported.

Decoration Type:

Screen Print, Embroidery, Twill

Decoration Placements:

6, 7, 8, 9, BN

MEN'S COTTON RICH FLEECE JOGGER

NEW

82JNSMO

\$32.50

Heathers: 66% Cotton / 34% Polyester

Medium Grey Heather: 75% Cotton / 25% Polyester

Ash: 82% Cotton / 18% Polyester

8.5 OZ / 288 GSM

Sizes: XS-XXL

Oversize: 3XL

- Tapered Fit.
- Ring Spun Yarn, delivers a soft comfortable feel.
- 3 End Fleece, helps provide additional warmth.
- Zippered Pockets, for phone & media storage.
- Anti Pill, ensures an always smooth and comfortable feel.
- Imported.

Decoration Type:

Screen Print, Embroidery

Decoration Placements:

18





DRI-POWER® FLEECE 1/4 ZIP CADET

1Z4HBM0

\$25.50

50% Cotton / 50% Polyester
Oxford: 52% Polyester / 48% Cotton
9.3 OZ / 315 GSM

Sizes: S-XXL Oversize: 3XL

- Dri-Power® Moisture Wicking Fabric, keeps you dry & warm.
- Reverse coil center front zipper with jersey zipper garage.
- Side entry welt pockets, provides storage and warmth.
- 1x1 ribbed cuffs and waistband to help stay in place.
- "R" logo flagtag on left hem.

Decoration Type:

Screen Print, Embroidery, Twill

Decoration Placements:

3, 8, 9, BN



BLK
Black

QZB
Navy

OXF
Oxford

CD1
Black Heather

DRI-POWER® FLEECE COLORBLOCK HOOD

693HBM0

\$27.00

50% Cotton / 50% Polyester
Oxford: 52% Polyester / 48% Cotton
9.3 OZ / 315 GSM

Sizes: S-XXL Oversize: 3XL-4XL

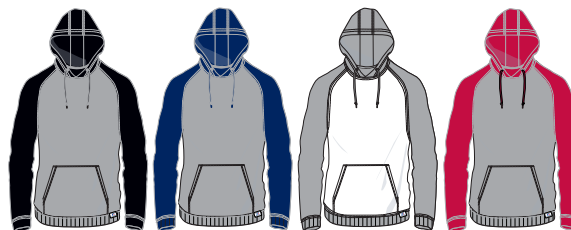
- Dri-Power® Moisture Wicking Fabric, keeps you dry & warm.
- Three piece double ply hood, provides protection from the elements.
- Front muff pocket, provides storage and warmth.
- "R" logo flagtag on left hem.

Decoration Type:

Screen Print, Embroidery, Twill

Decoration Placements:

7, 8, 9



OBK
Oxford/Black

OFN
Oxford/Navy

WHF
White/Oxford

OTD
Oxford/True Red



DRI-POWER® FLEECE CREW

698HBM1

\$18.50

50% Cotton / 50% Polyester

Oxford: 52% Polyester / 48% Cotton

9.3 OZ / 315 GSM

Sizes: S-XXL Oversize: 3XL-4XL

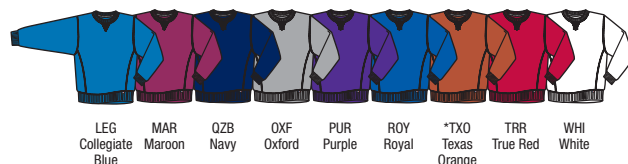
- Dri-Power® Moisture Wicking Fabric, keeps you dry & warm.
- Rib knit cuffs and waistband, for added comfort.
- "R" logo tab at waistband.
- Imported.

Decoration Type:

Screen Print, Embroidery, Twill

Decoration Placements:

6, 7, 8, 9, BN



* S-2XL

DRI-POWER® FLEECE PULLOVER HOOD

695HBM1

\$25.50

Colors: 50% Cotton / 50% Polyester

Oxford: 52% Polyester / 48% Cotton

9.3 OZ / 315 GSM

Sizes: S-XXL Oversize: 3XL-4XL

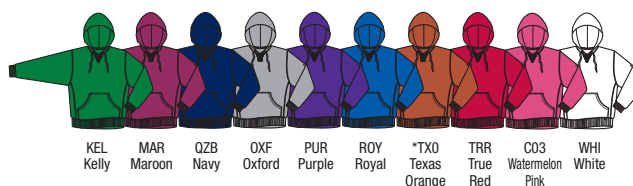
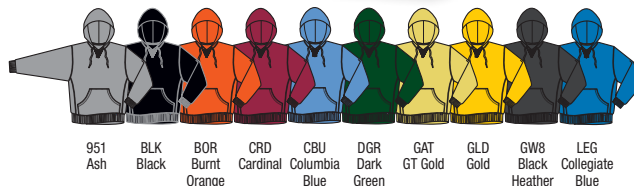
- Dri-Power® Moisture Wicking Fabric, keeps you dry & warm.
- Two-Ply Hood With Grommets and drawcord for additional protection from the elements.
- Rib knit cuffs and waistband, for added comfort.
- Front Muff Pocket, for phone & media storage.
- "R" logo tab at waistband.
- Imported.

Decoration Type:

Screen Print, Embroidery, Twill

Decoration Placements:

7, 8, 9



* S-3XL



DRI-POWER® FLEECE FULL ZIP HOOD

697HBM1

\$29.50

Colors: 50% Cotton / 50% Polyester

Oxford: 52% Polyester / 48% Cotton

9.3 OZ / 315 GSM

Sizes: S-XXL Oversize: 3XL

- Dri-Power® Moisture Wicking Fabric, keeps you dry & warm.
- Two-Ply Hood With Grommets and matching draw cord, delivers additional protection from the elements.
- Full front center zipper.
- Rib knit cuffs and waistband, for added comfort.
- Front Muff Pocket, provides storage and warmth.
- "R" logo tab at waistband.
- Imported.

Decoration Type:

Embroidery, Screen Print, Twill

Decoration Placements:

6, 7 (Twill Only), 8, 9

DRI-POWER® CLOSED-BOTTOM FLEECE POCKET PANT

029HBM0

\$23.00

Colors: 50% Cotton / 50% Polyester

Oxford: 52% Polyester / 48% Cotton

9.3 OZ / 315 GSM

Sizes: S-XXL Oversize: 3XL

- Dri-Power® Moisture Wicking Fabric, keeps you dry & warm.
- Side Entry Pockets, provides storage and warmth.
- Elastic Waistband With Inside Quickcord, for an adjustable comfort fit.
- Elastic Hem Leg Bottoms.
- "R RUSSELL" on right hip.
- Graded inseams: S-29.5", M-30.5", L-31.5", XL-32.5", 2XL-33", 3XL-33.5", 4XL-34".
- Imported.

Decoration Type:

Embroidery, Screen Print, Twill

Decoration Placements:

17, 18

INSEAM:

S 29½"	XXL 33"
M 30½"	3XL 33½"
L 31½"	4XL 34"
XL 32½"	



BLK Black GW8 Black Heather QZB Navy *OXF Oxford
*S-4XL



INSEAM:
 S 30" XL 33"
 M 31" XXL 34"
 L 32" 3XL 35"
 4XL 36"

DRI-POWER® OPEN-BOTTOM FLEECE POCKET PANT

596HBM0

\$23.00

Colors: 50% Cotton / 50% Polyester
 Oxford: 52% Polyester / 48% Cotton
 9.3 OZ / 315 GSM

Sizes: S-XXL Oversize: 3XL-4XL

- Dri-Power® Moisture Wicking Fabric, keeps you dry & warm.
- Side Entry Pockets, provide storage and warmth.
- Elastic Waistband With Inside Quickcord, for an adjustable comfort fit.
- "R RUSSELL" on right hip.
- Graded inseams: S-30", M-31", L-32", XL-33", 2XL-34", 3XL-35", 4XL-36".
- Imported.

Decoration Type:

Screen Print, Embroidery, Twill

Decoration Placements:

17, 18



BLK Black
 GW8 Black Heather
 CRD Cardinal
 DGR Dark Green
 MAR Maroon
 QZB Navy
 OXF Oxford
 PUR Purple
 ROY Royal
 TRR True Red

DRI-POWER® CLOSED-BOTTOM FLEECE PANT

696HBM0

\$18.50

Colors: 50% Cotton / 50% Polyester
 Oxford: 52% Polyester / 48% Cotton
 9.3 OZ / 315 GSM

Sizes: S-XXL Oversize: 3XL

- Dri-Power® Moisture Wicking Fabric, keeps you dry & warm.
- Elastic hem leg bottoms.
- Graded inseams: S-29.5", M-30.5", L-31.5", XL-32.5", 2XL-33", 3XL-33.5", 4XL-34".
- Imported.

Decoration Type:

Embroidery, Screen Print, Twill

Decoration Placements:

17, 18

ADULT INSEAM:
 S 29½"
 M 30½"
 L 31½"
 XL 32½"
 XXL 33"
 3XL 33½"
 4XL 34"



951 Ash
 BLK Black
 GW8 Black Heather
 QZB Navy
 **OXF Oxford
 *TXO Texas Orange

* S-2XL
 **S-4XL



WOMEN'S LIGHTWEIGHT FLEECE CREW

LF3YHX0

\$32.00

60% Cotton / 40% Polyester
7.6 OZ / 258 GSM

Sizes: S-XXL

- 1x1 ribbed collar, v-patch, cuffs and waistband, for added comfort.
- Raglan sleeves with 2 needle cover seam.
- "R RUSSELL" embroidery logo on lower left sleeve.
- Imported.

Decoration Type:

Screen Print, Embroidery, Twill

Decoration Placements:

6, 7, 8, 9, BN

WOMEN'S LIGHTWEIGHT FLEECE PULLOVER HOOD

LF1YHX0

\$34.00

60% Cotton / 40% Polyester
7.6 OZ / 258 GSM

Sizes: S-XXL

- Two piece single ply hood provides protection from the elements.
- Front Muff Pocket, for phone & media storage.
- "R RUSSELL" embroidery on wearer's left sleeve cuff.
- Imported.

Decoration Type:

Screen Print, Embroidery, Twill

Decoration Placements:

7, 8, 9



WOMEN'S LIGHTWEIGHT FLEECE PANT

LF5YHX0

\$29.00

60% Cotton / 40% Polyester
7.6 OZ / 258 GSM

Sizes: S-XXL

- Rib trim waistband with outside drawcord, for added comfort.
- Side entry pockets with rib trim.
- Upper back yoke with single needle topstitch.
- Logo at right hip.
- Imported.

Decoration Type:

Screen Print, Embroidery

Decoration Placements:

18



YOUTH DRI-POWER® FLEECE CREW

998HBB1

\$14.00

Colors: 50% Cotton / 50% Polyester

Oxford: 52% Polyester / 48% Cotton

9.3 OZ / 315 GSM

Sizes: S-XL

- Dri-Power® Moisture Wicking Fabric, keeps you dry and warm.
- Rib knit cuffs and waistband, for added comfort.
- "R RUSSELL" logo tab at waistband.
- Imported.

Decoration Type:

Screen Print, Embroidery, Twill

Decoration Placements:

6, 7, 8, 9, BN



BLK
Black

GW8
Black
Heather

DGR
Dark Green

MAR
Maroon



QZB
Navy

OXF
Oxford

ROY
Royal

TRR
True Red

YOUTH DRI-POWER® FLEECE PULLOVER HOOD

995HBB1

\$19.50

Colors: 50% Cotton / 50% Polyester

Oxford: 52% Polyester / 48% Cotton

9.3 OZ / 315 GSM

Sizes: S-XL

- Dri-Power® Moisture Wicking Fabric, keeps you dry and warm.
- Two-Ply Hood, for additional protection from the elements.
- Rib knit cuffs and waistband to help stay in place.
- Front Muff Pocket, for phone & media storage.
- "R RUSSELL" logo tab at waistband.
- Imported.

Decoration Type:

Screen Print, Embroidery, Twill

Decoration Placements:

3, 36, 6, 7, 8



BLK
Black

GAT
GT Gold

GW8
Black
Heather

MAR
Maroon



DGR
Dark Green

QZB
Navy

OXF
Oxford

ROY
Royal



TXO
Texas
Orange

TRR
True Red

C03
Watermelon
Pink





YOUTH DRI-POWER® FLEECE FULL ZIP HOOD

997HBB1

\$25.00

Colors: 50% Cotton / 50% Polyester

Oxford: 52% Polyester / 48% Cotton

9.3 OZ / 315 GSM

Sizes: S-XL

- Dri-Power® Moisture Wicking Fabric, keeps you dry and warm.
- Two-Ply Hood, for additional protection from the elements.
- Full Front Center Zipper.
- Front Muff Pocket, for phone & media.
- Rib knit cuffs and waistband, for added comfort.
- "R RUSSELL" logo tab at waistband.
- Imported.

Decoration Type:

Screen Print, Embroidery, Twill

Decoration Placements:

3, 6, 8, 9



BLK
Black

OXF
Oxford

QZB
Navy

YOUTH DRI-POWER® FLEECE POCKETED PANT

596HBB2

\$14.50

Colors: 50% Cotton / 50% Polyester

Oxford: 52% Polyester / 48% Polyester

9.3 OZ / 315 GSM

Youth Sizes: S-XL

- Dri-Power® Moisture Wicking Fabric, keeps you dry and warm.
- Elastic Waistband With Inside Quickcord, for an adjustable comfort fit.
- Side Entry Pockets, provides storage and warmth.
- Graded inseams: S-21 ¾, M-24 ¾, L-27 ¾, XL-30 ¾.
- Heat transfer "R RUSSELL" on right hip.
- Imported

Decoration Type:

Embroidery, Screen Print, Twill

Decoration Placement:

18



BLK
Black

GW8
Black
Heather

QZB
Navy

DGR
Dark Green

ROY
Royal

TRR
True Red

OXF
Oxford



MEN'S ¼ ZIP PERFORMANCE FLEECE CADET

8TZEFM0

\$49.00

100% Polyester

Adult Sizes: S – XXL Oversize: 3XL

- Dri-Power® Moisture Wicking Fabric, keeps you dry and warm.
- Self material cadet collar with mesh lining.
- Contrast center front zipper with R logo pull.
- Ribbed cuffs and waistband, for added comfort.
- Front Muff Pocket With Zippers, for secured storage.
- Left Sleeve With Zipper, for additional media storage.
- Reflective Detail On Back Neck, for visibility in low light conditions.
- Silver reflective R RUSSELL logo on lower left sleeve.
- Imported.

Decoration Type:

Screen Print, Embroidery, Twill

Decoration Placements:

6, 8, 9

TECHNICAL PERFORMANCE FLEECE HOOD

854EFM1

\$48.00

100% Polyester

Sizes: S-4XL

- Dri-Power® Moisture Wicking Fabric, keeps you dry and warm.
- Self-material Outer Hood providing additional protection from the elements.
- Contrast mesh hood liner.
- Side Welt Pockets, for phone & media storage.
- Self-material Cuffs & Bottom Band.
- "R RUSSELL" logo at lower left sleeve end.
- R logo tab at lower left hood.
- Imported.

Decoration Type:

Screen Print, Embroidery, Twill

Decoration Placements:

6, 7, 8, 9





TECHNICAL PERFORMANCE FLEECE FULL ZIP CADET

8TJEFM1
100% Polyester

\$46.00

Sizes: S-3XL

- Dri-Power® Moisture Wicking Fabric, keeps you dry and warm.
- Full Front Center Zipper.
- Front Side Pockets with zippers, for secured storage.
- Right Chest Pocket with zipper, for additional media storage.
- Elastic bottom hem, for added protection from the elements.
- "R RUSSELL" logo at lower left sleeve.
- Imported.

Decoration Type:

Screen Print, Embroidery, Twill

Decoration Placements:

8, BN



TECH FLEECE PANT

838EFM2
100% Polyester

\$42.50

Sizes: S-XXL Oversize: 3XL-4XL

- Dri-Power® Moisture Wicking Fabric, keeps you dry and warm.
- Natural Stretch & Quick Dry Material, provides a dry full motion fit.
- Multi-needle elastic waistband with Russell logo, 1/4" exposed elastic at top of waistband.
- Side Entry Pockets, for phone & media storage.
- Back Zippered Pocket, for additional secured storage.
- Zippered Leg Openings, helping ease getting in & out of pants.
- "R RUSSELL" on right hip.
- Imported.

Decoration Type:

Screen Print, Embroidery, Twill

Decoration Placement:

18





WOMEN'S TECH FLEECE FULL ZIP JACKET

TF7EFX0
100% Polyester

\$52.50

Sizes: S-XXL

- Dri-Power® Moisture Wicking Fabric, keeps you dry and warm.
- Front Welt Pockets With Invisible Zippers, for phone & media storage.
- Upper Right Front Insert With Invisible Zipper, for additional secure storage.
- Side panels with 3-needle cover stitching.
- Reflective heat transfer at lower left front, for visibility in low light conditions.
- Logo on outer back neck.
- Imported.

Decoration Type:
Embroidery, Screen Print

Decoration Placements:
8, BN

WOMEN'S TECH FLEECE PANT

TF5EFX0
100% Polyester

\$45.00

Sizes: S-XXL

- Dri-Power® Moisture Wicking Fabric, keeps you dry and warm.
- Side Entry Pockets, for phone & media storage.
- Reflective heat transfer lower left leg, for visibility in low light conditions.
- Logo on left front hip.
- Imported.

Decoration Type:
Embroidery, Screen Print

Decoration Placements:
17, 18



TRAINING 2017





STRIATED PERFORMANCE TEE

ST6NLM0

\$18.00

100% Polyester
4.3 OZ / 146 GSM

Sizes: S-4XL

- Dri-Power® Moisture Wicking Fabric, keeps you dry & cool.
- Set-in sleeves, provides full range of motion.
- "R RUSSELL" on left sleeve end.
- Set-in self-material collar.
- Imported.

Decoration Type:

Screen Print

Decoration Placements:

6, 7, 8, 9, 10, 11, 35, BN



WOMEN'S STRIATED TEE **NEW**

ST7NLX0

\$18.00

100% Polyester
4.3 OZ / 146 GSM

Sizes: S-XXL

- Dri-Power® Moisture Wicking Fabric, keeps you dry & cool.
- Set-in sleeves, provides full range of motion.
- "R RUSSELL" on left sleeve end.
- Imported.

Decoration Type:

Embroidery, Screen Print

Decoration Placements:

6, 7, 8, BN

Men's version: ST6NLM0





PLAYER'S TEE

28MHQM0

\$14.50

20% Cotton / 80% Polyester
4.4 OZ / 150 GSM

Sizes: S – XXL
Oversize: 3XL – 4XL

- Dri-Power® Moisture Wicking Fabric, keeps you dry & cool.
- Three-needle coverstitching at armholes and side seams.
- Heat transfer "R RUSSELL" logo on left sleeve end.
- Imported.

Decoration Type:

Embroidery, Screen Print

Decoration Placements:

3, 35, 6, 7, 8, 9, BN*

*Placement BN ONLY available in Screen Print



WOMEN'S PLAYER'S TEE

28WHQX0

\$14.50

20% Cotton / 80% Polyester
4.4 OZ / 150 GSM

Sizes: S - XXL

- Dri-Power® Moisture Wicking Fabric, keeps you dry & cool.
- Contoured seams on front and shoulders with 3-needle coverstitching.
- Heat transfer "R RUSSELL" on left sleeve end.
- Imported.

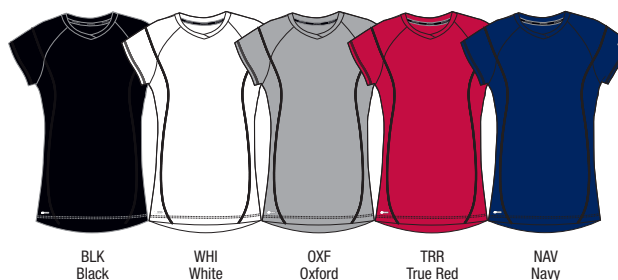
Decoration Type:

Embroidery, Screen Print

Decoration Placements:

3, 6, 7, BN*

*Placement BN ONLY available in Screen Print





AAD Black Camo AAE Navy Camo AAF White Camo AAZ Dark Green Camo ABD True Red Camo

SUBLIMATED CAMOKAZE PERFORMANCE TEE

CMZX2M0 – Adult \$20.00
 CMZX2B0 – Youth \$16.50
 100% Polyester
 4.1 OZ / 139 GSM

Adult Sizes: S-4XL
 Youth Sizes: S-XL

- Dri-Power® Moisture Wicking Fabric, keeps you dry & cool.
- Self-material collar.
- Reflective "R RUSSELL" on left sleeve end.
- Imported.

Decoration Type:
 Screen Print

Decoration Placements:
 6, 7, 8, 9, 10, 11, BN

WOMEN'S CAP SLEEVE V-NECK TEE

7P8S2XK \$22.00
 94% Nylon / 6% Spandex Stretch Knit – Colors
 91% Polyester / 9% Spandex Stretch Knit – White

Sizes: XS-XXL

- Moisture wicking fabric.
- Self-material V-neck.
- Compression body and sleeve.
- Flat-lock seamed construction reduces abrasion.
- "R RUSSELL" on right upper front chest.
- Imported.

Decoration Type:
 Screen Print

Decoration Placements:
 6, 7, 8, BN



BLK Black CRD Cardinal DGR Dark Green GSV Gridiron Silver MAR Maroon NAV Navy PUR Purple ROY Royal TRR True Red WHI White



*Adult Only

CORE PERFORMANCE TEE

629X2M1 – Adult \$13.50
629X2B1 – Youth \$11.50

100% Polyester Interlock
4.1 OZ / 139 GSM

Adult Sizes: S-4XL
Youth Sizes: S-XL

- Dri-Power® Moisture Wicking Fabric, keeps you dry & cool.
- Anti-Odor Technology, keeps you fresh throughout your day.
- Self-material collar.
- Contrast back neck tape (stealth on all colors).
- "R RUSSELL" on left sleeve end.
- Imported.

Decoration Type:

Embroidery, Screen Print

Decoration Placements:

6, 7, 8, 9, 10, 11, BN

CORE PERFORMANCE LONG SLEEVE TEE

631X2M1 – Adult \$16.00
100% Polyester Interlock
4.1 OZ / 139 GSM

Sizes: S-4XL

- Dri-Power® Moisture Wicking Fabric, keeps you dry & cool.
- Anti-Odor Technology, keeps you fresh throughout your day.
- Self-material collar.
- "R RUSSELL" at lower left sleeve.
- Imported.

Decoration Type:

Embroidery, Screen Print

Decoration Placements:

6, 7, 8, 9, BN



CORE PERFORMANCE SLEEVELESS TEE

630X2M1 \$12.50
100% Polyester Interlock
4.1 OZ / 139 GSM

Sizes: S-3XL

- Dri-Power® Moisture Wicking Fabric, keeps you dry & cool.
- Anti-Odor Technology, keeps you fresh throughout your day.
- Self-material collar.
- "R RUSSELL" at outer center back neck.
- Imported.

Decoration Type:

Embroidery, Screen Print

Decoration Placements:

6, 7, 8, 9

THE ESSENTIAL TEE COLLECTION



ESSENTIAL TEE NEW

64STTM0 – Adult	\$6.50
64STTB0 – Youth*	\$5.50
64STTX0 – Womens	\$6.50

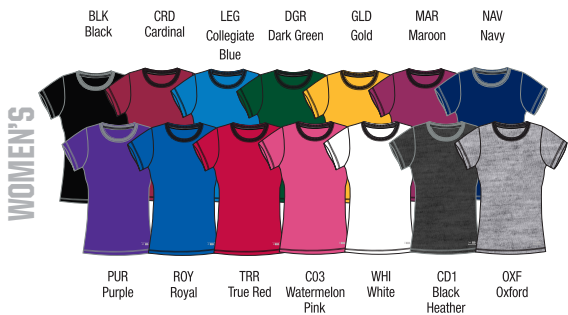
60% Cotton / 40% Polyester Jersey • 4.5 oz / 153 gsm

Adult Sizes: S-XXL Oversize: 3XL-4XL Youth Sizes: S-XL Womens: XS-XXL

- Dri-Power® Moisture Wicking Fabric, keeps you dry & cool.
- Anti-Odor Technology, provides Built in Freshness Protection.
- Soft SpunYarn, delivers a soft comfortable feel.
- Imported.

Decoration Type:
Screen Print

Decoration Placements:
6, 7, 8, 9, 10, 35, 3 or BN





LONG SLEEVE ESSENTIAL TEE **NEW**

64LTTM0 – Adult
64LTTX0 – Womens

\$9.00
\$9.00

60% Cotton / 40% Polyester Jersey • 4.5 oz / 153 gsm

Adult Sizes: S-XXL Oversize: 3XL Womens: XS-XXL

- Dri-Power® Moisture Wicking Fabric, keeps you dry & cool.
- Anti-Odor Technology, provides Built in Freshness Protection.
- Soft SpunYarn, delivers a soft comfortable feel.
- Imported.

Decoration Type:
Screen Print

Decoration Placements:
6, 7, 8, 9, 32, 3 or BN





NEW

MEN'S 1/4 ZIP PULLOVER

QZ7EAM0

\$30.00

100% Polyester 2-Tone Interlock

Sizes: XS-3XL

- Light Weight Stretch Fabric provides comfort and full mobility.
- Dri-Power® Moisture Wicking Fabric, keeps you dry & cool.
- Anti-Odor Technology, keeps you fresh throughout your day.
- "R RUSSELL" on left sleeve end.
- Imported.

Decoration Type:

Embroidery, Screen Print

Decoration Placements:

8, 6, BN





NEW

MEN'S ESSENTIAL POCKETED SHORT

TS7X2M0 – (Men's)

\$16.00

TS7X2B0 – (Youth)

\$15.00

100% Polyester Interlock

Men's Sizes: S – XXL Oversize: 3XL

Youth Sizes: S – XL

- Dri-Power® Moisture Wicking Fabric, keeps you dry & cool.
- Side Entry Pockets, for phone & media storage.
- Internal Drawcord, for an adjustable comfort fit.
- 10" Inseam- Men's.
- 7" Inseam-Youth.
- "R RUSSELL" at lower right leg.
- Imported.

Decoration Type:

Screen Print, Embroidery

Decoration Placements:

18



MEN'S POCKETED PERFORMANCE SHORT

5CPERM0

\$27.00

92% Polyester / 8% Spandex Stretch Jersey

Sizes: S – XXL Oversize: 3XL

- Dri-Power® Moisture Wicking Fabric, keeps you dry & cool.
- Elastic Waistband With Inside Quickcord, for an adjustable comfort fit.
- Angled Side Entry Pockets, for phone & media storage.
- Back Welt Pocket With Zipper Closure, for additional secured storage.
- Flat Seamed Rises & Mesh Gusset, delivers ventilation & cooling.
- Side inserts with 3 needle coverstitch for added ventilation.
- 9" inseam on all sizes.
- Silver reflective heat transfer "R RUSSELL" logo lower right leg.

Decoration Type:

Embroidery, Screen Print

Decoration Placements:

18





MEN'S COTTON POCKET SHORT

25843M0

\$10.50

Colors: 100% Cotton

Black Heather: 50% Cotton / 50% Polyester

Oxford: 53% Polyester / 47% Cotton

Sizes: S-XXL Oversize: 3XL-4XL

- Internal Drawcord, for an adjustable comfort fit.
- Side entry pockets, for phone & media storage.
- 8" Inseam.
- "R RUSSELL" at lower right leg.
- Imported.

Decoration Type:

Screen Print, Embroidery

Decoration Placements:

18

MEN'S 9" POLYESTER TRICOT MESH POCKET SHORT

651AFM0

\$14.50

100% Polyester

Sizes: S-3XL

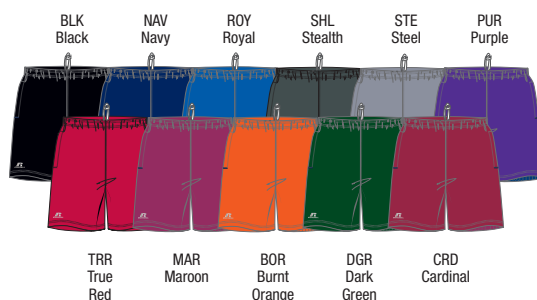
- Dri-Power® Moisture Wicking Fabric, keeps you dry & cool.
- Elastic Waistband With Inside Quickcord, for an adjustable comfort fit.
- Side entry pockets, provides phone & media storage.
- 9" inseam on all sizes.
- "R RUSSELL" on lower right leg.
- Imported.

Decoration Type:

Screen Print, Embroidery

Decoration Placements:

18



MEN'S/YOUTH POLYESTER TRICOT MESH SHORT

659AFMK – Adult

\$13.50

659AFB0 – Youth

\$13.00

100% Polyester Tricot Mesh

Adult Sizes: S-XXL

Oversize: 3XL-4XL

Youth Sizes: S-XL

- Dri-Power® Moisture Wicking Fabric, keeps you dry & cool.
- Elastic Waistband With Inside Quickcord, for an adjustable comfort fit.
- 9" inseam adult / 7" inseam youth.
- No Pockets.
- "R RUSSELL" on upper right hip.
- Imported.

Decoration Type:

Screen Print, Embroidery

Decoration Placements:

17, 18

Notes:

White offered in S-XXL only

WOMEN'S 3" INSEAM SHORT

WS3JHX0

\$25.50

100% Polyester Woven

Women's: S - XXL

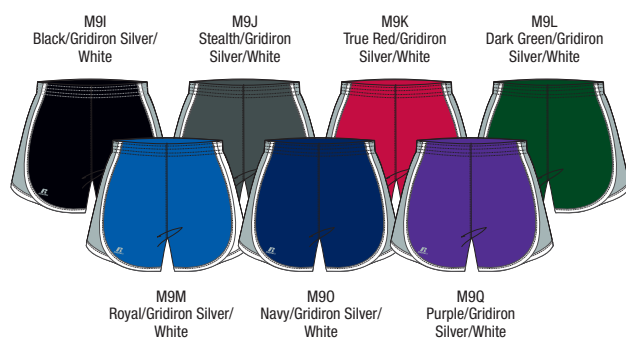
- 1" finished elastic 4 needle waistband, for comfort.
- Contrast side inserts.
- Mesh brief liner.
- "R RUSSELL" heat transfer logo on lower right leg.
- Imported.

Decoration Type:

Screen Print, Embroidery

Decoration Placements:

18



WOMEN'S PERFORMANCE PANT

PP2JTX0

\$45.00

86% Polyester / 14% Spandex

Women's: S - XXL

- Flat waistband with 3/4" elastic, for added comfort.
- Contrast mesh in inner waistband.
- Graded inseam.
- 3/4" hemmed bottom.
- "R RUSSELL" heat transfer at wearer's right hip.

Decoration Type:

Screen Print, Embroidery

Decoration Placements:

18





NEW

MEN'S MUSCLE COMPRESSION

CM7PNM0

\$20.00

90% Polyester / 10% Spandex

Adult Sizes: S-XXL Oversize: 3XL-4XL

- Dri-Power® Moisture Wicking Fabric, keeps you dry & cool.
- Tight Compression fit, delivers a close flexible fit.
- Side Mesh Inserts, provides added ventilation.
- Flat-lock seamed construction, helps reduce abrasion.
- "R RUSSELL" on center back neck.
- Imported.



LRA
Black/
Rock

NAF
Navy/
Rock

SQT
True Red/
Rock

YHX
White/
Rock

Decoration Type:
Embroidery

Decoration Placement:
8

NOTES:

Compression short: 8P1PNMK

Compression tight: 8P2PNMK

MEN'S HALF SLEEVE COMPRESSION

NEW

CH7PNM0

\$22.00

90% Polyester / 10% Spandex

Adult Sizes: S-XXL Oversize: 3XL-4XL

- Dri-Power® Moisture Wicking Fabric, keeps you dry & cool.
- Tight Compression fit, delivers a close flexible fit.
- Side Mesh Inserts, provides added ventilation.
- Flat-lock seamed construction, helps reduce abrasion.
- "R RUSSELL" on center back neck.
- Imported.

Decoration Type:
Embroidery

Decoration Placement:
8



LRA
Black/
Rock

NAF
Navy/
Rock

SQT
True Red/
Rock

YHX
White/
Rock



NOTES:

Compression short: 8P1PNMK

Compression tight: 8P2PNMK

NEW

MEN'S LONG SLEEVE COMPRESSION

CL7PNM0

\$25.00

90% Polyester / 10% Spandex

Sizes: S-XXL Oversize: 3XL-4XL

- Dri-Power® Moisture Wicking Fabric, keeps you dry & cool.
- Tight Compression fit, delivers a close flexible fit.
- Side Mesh Inserts, provides added ventilation.
- Flat-lock seamed construction, helps reduce abrasion.
- "R RUSSELL" on center back neck.
- Imported.



LRA
Black/
Rock

NAF
Navy/
Rock

SQT
True Red/
Rock

YHX
White/
Rock

Decoration Type:
Embroidery

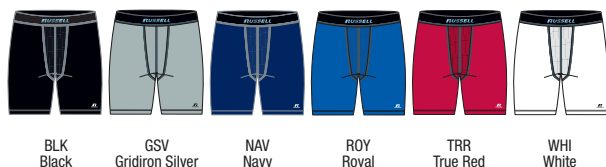
Decoration Placement:
8

NOTES:

Compression short: 8P1PNMK

Compression tight: 8P2PNMK





MEN'S PERFORMANCE COMPRESSION SHORT

8P1PNMK

\$26.00

Body: 90% Polyester / 10% Spandex
Crotch Piece / Upper side inner mesh: 92% Polyester / 8% Spandex

Sizes: S-XXL Oversize: 3XL

- Dri-Power® Moisture Wicking Fabric, keeps you dry & cool.
- Tight Compression fit, delivers a close flexible fit.
- Flat comfortable stretch waistband.
- Mesh crotch and inserts for added ventilation.
- 4-needle flatseam construction reduces abrasion.
- Two-needle coverstitch hemmed leg bottom.
- 8" inseam.
- "R RUSSELL" on right leg.
- Imported.

NOTES:

Hook-up styles: CM7PNM0, CH7PNM0, CL7PNM0

MEN'S 3/4 PERFORMANCE COMPRESSION TIGHT NEW

8P3PNMK

\$30.00

Body: 90% Polyester / 10% Spandex
Crotch Piece / Upper side inner mesh: 92% Polyester / 8% Spandex

Sizes: S-XXL Oversize: 3XL

- Dri-Power® Moisture Wicking Fabric, keeps you dry & cool.
- Tight Compression fit, delivers a close flexible fit.
- Flat comfortable stretch waistband.
- 4-needle flatseam construction reduces abrasion.
- Two-needle coverstitch hemmed leg bottom.
- Graded finished inseam length.
- "R RUSSELL" on right leg.
- Imported.

NOTES:

Hook-up styles: CM7PNM0, CH7PNM0, CL7PNM0





BLK Black DGR Dark Green MAR Maroon NAV Navy PUR Purple ROY Royal TRR True Red WHI White

PERFORMANCE TIGHT-FIT COLD WEATHER LONG SLEEVE CREW

6P3NAMK

\$45.00

Body: 88% Polyester / 12% Spandex Stretch Knit
Mesh Inserts: 100% Polyester

Sizes: S-XXL Oversize: 3XL

- Moisture wicking fabric.
- 1" Self-material crew neck.
- Compression body and sleeves.
- Flat-seam construction reduces abrasion.
- Two-needle coverstitch hemmed sleeves and bottom.
- "R RUSSELL" back neck.
- Imported.

Decoration Type:

N/A

Decoration Placements:

N/A

NOTES:

Cold Weather Compression Tight: 6PHNAMK

PERFORMANCE COLD WEATHER TIGHT

6P4NAMK

\$45.00

Body: 88% Polyester / 12% Spandex Stretch Knit
Mesh Inserts: 100% Polyester

Sizes: S-XXL Oversize: 3XL

- Moisture wicking fabric.
- Compression body and mesh inserts.
- 1-1/2" Plush jacquard waistband with Russell logo.
- Flat-seam construction reduces abrasion.
- Two-needle coverstitch hemmed leg bottom.
- Graded inseam.
- "R RUSSELL" on right hip.
- Imported.

Decoration Type:

N/A

Decoration Placements:

N/A

NOTES:

6P3NAMK



BLK Black NAV Navy TRR True Red WHI White

SIDELINE 2017





WOMEN'S ESSENTIAL POLO

7EPTUX0

100% Polyester

\$28.00

NEW

Sizes: S-XXL

- Dri-Power® moisture wicking fabric, keeps you dry & cool.
- Anti-Odor Technology, provides Built in Freshness Protection.
- UPF 30+, provides protection from the sun.
- No curl collar.
- Clean finished placket with 3 logoed buttons for modern styling.
- Imported.

Decoration Type:
Embroidery

Decoration Placements:
8, 9, 35

Men's version: 7EPTUM0



NEW MEN'S ESSENTIAL POLO

7EPTUM0

100% Polyester

\$28.00

Sizes: S-XXL Oversize: 3XL-4XL

- Dri-Power® moisture wicking fabric, keeps you dry & cool.
- Anti-Odor Technology, provides Built in Freshness Protection.
- UPF 30+, provides protection from the sun.
- No curl collar.
- Clean finished placket with 3 logoed buttons for modern styling.
- Imported.

Decoration Type:
Embroidery

Decoration Placements:
8, 9, 35

Women's version: 7EPTUX0



NEW MEN'S ESSENTIAL LONG SLEEVE POLO

7ELTUM0

100% Polyester

\$37.50

Sizes: S-4XL

- Dri-Power® moisture wicking fabric, keeps you dry & cool.
- Anti-Odor Technology, provides Built in Freshness Protection.
- UPF 30+, provides protection from the sun.
- No curl collar.
- Clean finished placket with 3 logoed buttons for modern styling.
- Rib cuffs, keeps your sleeves in place.
- Imported.

Decoration Type:
Embroidery

Decoration Placements:
8, 9

GAMEDAY POLO



GAMEDAY POLO

NEW

7GPPAM0 – Adult - 95% Polyester/5% Spandex Cooling Jersey

\$37.50

7GPPAX0 – Womens - 100% Polyester

\$37.50

Sizes: S-XXL Oversize: 3XL-4XL Women's: S-XXL

- Built in cooling Technology, keeps you cool & comfortable.
- Anti-Odor Technology, provides Built in Freshness Protection.
- Vented mesh back neck panel, for added ventilation & cooling.
- UPF 30+, provides protection from the sun.
- Clean finished placket with 3 "R" matte snaps for modern styling.
- Reflective tape on shoulders for high visibility in low light conditions.
- Imported.

Decoration Type:
Embroidery

Decoration Placements:
8, 9, 35

ADULT



WOMEN'S





MEN'S FASHION POLO

MF6NQMK

\$45.00

95% Polyester / 5% Spandex Jacquard

Sizes: S-XXL Oversize: 3XL-4XL

- Dri-Power® moisture wicking fabric, keeps you dry & cool.
- Side vents with bartacks, for added ventilation.
- Allen Solly placket with 3 buttons.
- Self-material collar.
- "R RUSSELL" embroidery on left sleeve end.
- Imported.

Decoration Type:

Embroidery

Decoration Placements:

8, 9, 35



WOMEN'S FASHION POLO

WF6NQXK

\$45.00

95% Polyester / 5% Spandex

Sizes: S-XXL

- Dri-Power® moisture wicking fabric, keeps you dry & cool.
- Side vents with bartacks, for added ventilation.
- Self material cadet collar with reverse coil zipper.
- "R RUSSELL" embroidery on left sleeve end.
- Imported.

Decoration Type:

Embroidery

Decoration Placements:

8, 9, 35



NEW

MEN'S GOLF POLO

7GFQQM0
100% Polyester

\$42.50

Adult Sizes: S-XXL Oversize: 3XL

- Dri-Power® moisture wicking fabric, keeps you dry & cool.
- Anti-Odor Technology, provides Built in Freshness Protection.
- UPF 30+, provides protection from the sun.
- Clean finished placket with 3 logoed buttons for modern styling.
- Imported.

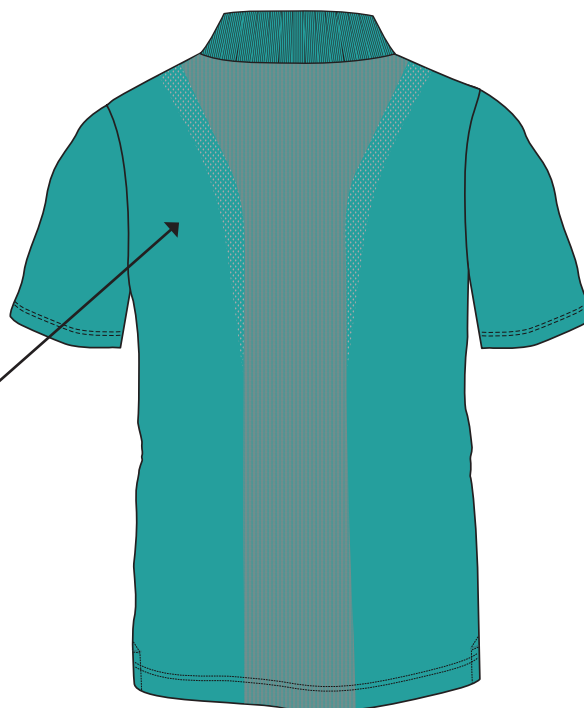
Decoration Type:
Embroidery

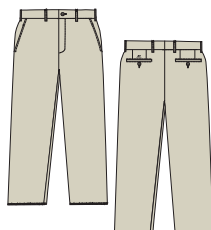
Decoration Placements:
8, 9, 35



TARGETED BREATHABILITY

Engineered Jacquard Knit Mesh provides ventilation to keep you cool.



BLK
BlackCMT
Cement

MEN'S FLAT FRONT COACHES SLACK

103CGM1

\$54.00

100% Polyester Microfiber

Sizes: 32-56

- Dri-Power® Moisture Wicking Fabric, keeps you dry & cool.
- Wrinkle Resistant Finish, for a wrinkle free wear.
- Side entry pockets, provides storage and warmth.
- Back Welt Pockets with Button Closure, for secure storage.
- 36" unhemmed inseam (pant).
- "R RUSSELL" above left back pocket.
- Imported.

TEAM DYNASTY MEN'S COACHES SHORT

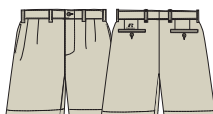
102CGM1

\$43.50

100% Polyester Microfiber

Sizes: 32-56

- Dri-Power® Moisture Wicking Fabric, keeps you dry & cool.
- Wrinkle Resistant Finish, for a wrinkle free wear.
- Side Entry Pockets, provides storage and warmth.
- Back Welt Pockets With Button Closure, for secure storage.
- Front pleats.
- 9" inseam.
- "R RUSSELL" above left back pocket.
- Imported.

BLK
BlackCMT
Cement

TEAM DRIVEN MEN'S COACHES SHORT

660PMMK

\$30.00

92% Polyester / 8% Spandex Stretch Closed Hole Mesh

Sizes: S-XXL Oversize: 3XL-4XL

- Dri-Power® Moisture Wicking Fabric, keeps you dry & cool.
- Team athletic cut for generous relaxed fit.
- Elastic Waistband With Inside Quickcord, for an adjustable comfort fit.
- Side Entry Pockets, for phone & media storage.
- Back Welt Pocket With Button Closure, for secure storage.
- Side Vents, delivers additional ventilation & cooling.
- 8" inseam all sizes.
- "R RUSSELL" on right hip.
- Imported.

Decoration Type:

Screen Print, Embroidery, Twill

Decoration Placements:

17, 18

NOTES:

*This style runs large. We recommend ordering one size smaller than your typical size.

BLK
BlackDGR
Dark GreenGSV
Gridiron SilverMAR
MaroonNAV
NavyROY
RoyalSHL
StealthTRR
True Red



MEN'S WOVEN 1/4 ZIP PULLOVER

MWPRVM1
100% Polyester

\$54.00

Sizes: S-XXL
Oversize: 3XL-4XL

- Self-material cadet collar with stretch binding, providing protection from the elements.
- Reverse coil zipper at center front with logo pull.
- Set-in sleeves with stretch binding at sleeve end, for added comfort.
- Muff pocket with reverse coil zipper openings for phone & media storage.
- Silver reflective "R RUSSELL" logo at center back neck.
- Imported.

Decoration Type:
Embroidery

Decoration Placements:
8, 9, 32, 35



SHORT SLEEVE PULLOVER

872RVMK - (Adult) **\$40.00**
872RVBK - (Youth) **\$35.00**
100% Polyester Woven

Adult Sizes: S-XXL Oversize: 3XL Youth Sizes: S-XL

- Very lightweight breathability fabric.
- Moisture wicking capability.
- Full cut body with quarter zip neck to go over uniform.
- Waist has shock cord with cord lock on wearers left.
- 4 side sew label lower left front.
- "R RUSSELL" left sleeve end.
- Imported.

Decoration Type:
Embroidery, Twill

Decoration Placements:
8, 9, 32, 35, BN



* Youth is only available in these colors



× NEW ×

MEN'S/WOMEN'S WOVEN WARM UP JACKET

7WJQVM0 – (Men's) \$50.00
 7WJQVX0 – (Women's) \$50.00
 100% Polyester

Men's Sizes: S-XXL Oversize: 3XL- 4XL

Women's Sizes: S-XXL

- Light Weight Stretch Woven Fabric, provides a light comfortable feel.
- Vented mesh back panels, for added ventilation & cooling.
- Imported.

Decoration Type:
 Screen Print, Embroidery

Decoration Placements:
 8, BN



× NEW ×

MEN'S/WOMEN'S WOVEN WARM UP PANT

7WPQVM0 – (Men's) \$45.00
 7WPQVX0 – (Women's) \$45.00
 100% Polyester

Men's Sizes: S-XXL Oversize: 3XL- 4XL

Women's Sizes: S-XXL

- Light Weight Stretch Woven Fabric, provides a light comfortable feel.
- Zippered side pockets, for secure phone and media storage.
- Zippered leg openings, for ease of getting in and out of.
- Imported.

Decoration Type:
 Screen Print, Embroidery

Decoration Placements:
 18



RUSSELL ATHLETIC PERFORMANCE SOCKS



SHOE SIZE			
SIZE	YOUTH	WOMEN'S	MEN'S
S	3Y-5Y	4-6	
M	5Y-7Y	6-10	6-9
L		10-13	9-12
XL			12-15

RUSSELL "P & R" CREW SOCK RTS01C1

\$8.50 per pair

- Colors: 57% Polyester, 26% Cotton, 10% Nylon, 6% Rubber, 1% Spandex.
- White: 54% Polyester, 28% Cotton, 12% Olefin, 5% Rubber, 1% Spandex.
- Sizes M-XL

- 12 Color offerings.
- Moisture management.
- Arch support.
- Reinforced toe.
- Mesh on top of foot for ventilation.
- Half cushion sole.
- Made in China.

Color Offering

UUA	Black/White/Gray
ATJ	Burnt Orange/White/Black
CWB	Cardinal/White/Black
DHB	Dark Green/White/Black
AKD	GT Gold/Black/White
ATK	Maroon/White/Stealth
ATF	Navy/White/Stealth
ATH	Purple/White/Stealth
RWK	Royal/White/Black
TWB	True Red/White/Black
ATI	Watermelon Pink/White/Stealth
HSK	White/Stealth/Black

SHOE SIZE			
SIZE	YOUTH	WOMEN'S	MEN'S
XS	3-6		
S	5-8		
M		4-6	6-8
L		6-10	8-12
XL		11-15	12-16

COLOR OFFERING

BWH	Black/White
BOW	Burnt Orange/White
CWH	Cardinal/White
COW	Columbia Blue/White
DWI	Dark Green/White
GOB	Gold/Black
KWH	Kelly/White
MWH	Maroon/White
NWH	Navy/White
PWH	Purple/White
ROW	Royal/White
TRW	True Red/White
WMW	Watermelon Pink/White
GTK	GT Gold/Black
XDE	White/Stealth



NEW! Odor Management Technology - "Silvadur™"

RUSSELL ALL SPORT SOCK RTS01A1

\$9.50 per pack

- 88% Polyester, 7% Nylon, 4% Rubber, 1% Spandex.
- 15 color offering.
- Left & right indicator on foot (All Sport Sock Only).
- Sizing on inside rim of sock.
- Moisture management.
- Arch and ankle support.
- Reinforced toe.
- Mesh on top of foot for ventilation.
- Half cushion sole.
- Sold in retail packaging in pairs; 12 pairs equal dozen.

NEW

RUSSELL CREW SOCK RTS03C2

\$18.00 per 3-pack

- 52% Polyester, 26% Cotton, 12% Olefin, 6% Nylon, 4% Spandex.
- Size M-XL.
- Moisture management.
- Arch support.
- Reinforced toe.
- Mesh on top of foot for ventilation.
- Half cushion sole.
- Retail Packaging.
- Made in the USA.



Color Offering

BWH	Black/White
XDE	White/Stealth

NEW

RUSSELL NO SHOW SOCK RTS03N2

\$16.00 per 3-pack

- 56% Polyester, 26% Cotton, 17% Olefin, 4% Nylon, 3% Spandex.
- Size M-XL.
- 2 color offering.
- Moisture management.
- Arch support.
- Reinforced toe.
- Mesh on top of foot for ventilation.
- Half cushion sole.
- Retail Packaging.
- Made in the USA.

Color Offering

BWH	Black/White
XDE	White/Stealth

NEW

RUSSELL QUARTER SOCK RTS03Q2

\$16.00 per 3-pack

- 56% Polyester, 18% Cotton, 16% Olefin, 5% Nylon, 5% Spandex.
- Size M-XL.
- 2 color offering.
- Moisture management.
- Arch support.
- Reinforced toe.
- Mesh on top of foot for ventilation.
- Half cushion sole.
- Retail Packaging.
- Made in the USA.

Color Offering

BWH	Black/White
XDE	White/Stealth

TEAM SPORTS





STOCK BASEBALL

2017 MEN'S BASE HIT

STOCK DECORATED PROGRAM



NEW

3R6X2MK (Adult)
3R6X2BK (Youth)



NEW

629X2M1 (Adult)
629X2B1 (Youth)



NEW

3R8X2MK (Adult)
3R8X2BK (Youth)

PROGRAM DATES:

1/9/2017 - 6/26/2017

TURN TIME:

Uniforms will be delivered 12-15 Business Days from order date

NEW ORDERS:

Minimum of 15 pieces per style, color and decoration

DECORATION:

Jerseys:

1 or 2 Color Russcote

Includes Team Name and Front and Back Numbers

Fonts - Team Name Available in Script with Tailsweep, Script,

Full Block, Times Bold, Stinger

Numbers Available in Full Block, Times Bold, Stinger

Placements:

Team Name Placements: 7

Numbers: 4" Front Number PL# 10 or 11 and 6" or 8" Back

Number PL# 6

RUSSELL ATHLETIC

QUICK TURN BRAID PROGRAM

3 HIGH QUALITY BASEBALL PANTS
20 PREMIUM TEAM COLOR BRAID OPTIONS
SHIPS IN 5 WORKING DAYS!!!



\$91.00

33347MK

**ADULT RELAXED FIT
BASEBALL PANT**



**ADULT
\$50.00**

**YOUTH
\$40.00**

338LGMK/BK

**ADULT & YOUTH DIAMOND FIT
BASEBALL PANT**

PROGRAM DETAILS

- 1 Braid Type: 106 - 1/8" - Pattern 0
- Colors: 20 Current Stock Colors

GT Gold	Gold	Navy	Marlin Aqua	White	Kelly	Royal	Burnt Orange	True Red	Purple
Black	Dark Green	Maroon	Cardinal	Columbia Blue	Gridiron Silver	Baseball Grey	Seal Brown	Texas Orange	Stealth

- Hem length can be specified on 33347MK
- No minimums but normal up-charges will apply for orders less than 6 units
- Order Entry Catalog: Under the Factory Stock Tab called, "Quick Turn Braid Program"
- Normal discounts and terms apply
- Program Starts 1/18/16

*** PRICES ABOVE ARE RETAIL PRICES THAT
INCLUDE THE PRICE FOR 1/8" BRAID**



ADULT FAUX PLACKET PULLOVER JERSEY**NEW****343VTM1** - VT Cloth**\$50.00**

- 92% Nylon / 8% Spandex – Colors
- 92% Polyester / 8% Spandex - White

Adult Sizes: S-XXL

- Faux placket pullover jersey.
- Raglan sleeve and coverseamed armholes.
- Curved hemmed bottom with extended tail.
- 4 Side sew label lower left front.
- "R RUSSELL" left sleeve.
- Imported.

Options:

1/8" Braid around neck and down front	\$12.00
1/2" Braid around neck and down front	\$13.00
1/8" Braid 1" up from sleeve ends	\$ 8.00
1/2" Braid 1" up from sleeve end	\$ 9.00
1/2" Braid on sleeve end	\$ 9.00
1" Braid on sleeve end	\$10.00

Decoration Type: Screen Print, Embroidery, Twill**Decoration Placements:**

3, 6, 6L, 7N*, 8, 8Y, 9, 10, 11, 32, 35, BN*, N4

*Screen Print not available on placement 7N

*Screen Print ONLY for placement BN

Notes: Faux placket pullover jersey – sewn placket allows for cleaner twill decoration by eliminating gapping between buttons.



× NEW ×

PERFORMANCE TWO BUTTON PLACKET JERSEY

3R6X2MK - X2 Cloth \$24.00

3R6X2BK - X2 Cloth (Youth) \$22.00

100% Polyester Interlock

Adult Sizes: S-XXL Oversize: 3XL Youth Sizes: S-XL

- Two button placket jersey with set-in sleeves.
- Self-material piping in the insert.
- HS Cloth in side and upper shoulder insert for more breathability.
- Curved hemmed bottom.
- Pad print label at inside center back neck.
- Neck taping with Russell Athletic branded.
- "R RUSSELL" left sleeve.
- Imported.

Decoration Type:

Screen Print

Decoration Placements:

*3, 6, 6L, 8, 9, 10, 11, 32, 35, BN

*Placement 3 is not offered on Youth

Notes:

Low bleed ink recommended

10% up charge for 3XL



TWO BUTTON SOLID PLACKET JERSEY**NEW**

3R7X2MK - X2 Cloth
 3R7X2BK - X2 Cloth (Youth)
 100% Polyester Interlock

\$18.00
 \$16.00

Adult Sizes: S-XXL Oversize: 3XL Youth Sizes: S-XL

- Moisture wicking fabric.
- Self-material collar.
- Two button placket with set-in sleeves.
- Curved hemmed bottom.
- "R RUSSELL" left sleeve logo.
- Imported.

Options:

1/8" Braid 1" up from Sleeve End

\$8.00

1/2" Braid 1" up from Sleeve End

\$9.00

Decoration Type:

Screen Print

Decoration Placements:

3, 6, 7, 8, 9, 10, 11, 32, 35, BN

Notes:

Low bleed ink recommended

10% upcharge for 3XL



BG7
Baseball Grey

BLK
Black

BOR
Burnt Orange

CRD
Cardinal

CBU
Columbia Blue

DGR
Dark Green

GLD
Gold

MAR
Maroon

NAV
Navy

PUR
Purple

ROY
Royal

TRR
True Red

WHI
White

NEW

PERFORMANCE V-NECK BASEBALL JERSEY

3R8X2MK - X2 Cloth \$24.00
 3R8X2BK - X2 Cloth (Youth) \$22.00
 100% Polyester Interlock

Adult Sizes: S-XXL Oversize: 3XL Youth Sizes: S-XL

- Moisture wicking fabric.
- V-neck self-material neck.
- White Front to a color back body to give more of a custom look.
- Three-needle coverstitch on all insert seams.
- "R RUSSELL" on left sleeve.
- Imported.

Decoration Type:
 Screen Print

Decoration Placements:
 3, 6, 7, 8, 9, 10, 11, 32, 35, BN



CORE PERFORMANCE TEE**629X2M1** - Adult**\$13.50****629X2B1** - Youth**\$11.50**

X2 Cloth 4.1 oz./sq. yd.

Adult Sizes: S-4XL

Youth Sizes: S-XL

- 100% Polyester Jersey.
- Moisture wicking fabric.
- Self-material collar.
- Contrast back neck tape. (stealth on all colors)
- Set-in sleeves.
- Two-needle hemmed sleeve openings and straight bottom.
- "R RUSSELL" on left sleeve end.
- Imported.

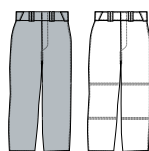
Decoration Type:

Embroidery, Screen Print

Decoration Placements:

6, 7, 8, 9, 9C, 10, 11, BN

*AQU
AquaBLK
Black*BOR
Burnt
OrangeCBU
Columbia
BlueCRD
CardinalDGR
Dark Green*GAT
GT GoldGLD
GoldMAR
MaroonNAV
NavyPUR
PurpleROY
RoyalSHL
StealthSTE
SteelTRR
True RedWHI
WhiteHZC
Lime Punch***Adult Only**



BG7
Baseball
Grey

WHI
White

DELUXE RELAXED FIT PANT

33347MK - 47 Cloth
100% Nylon Stretch Double Knit

\$85.00

Sizes: 28-42 Oversize: 44-48

- 2 1/2" deluxe elastic waistband with silicone gripper, 4 front belt loops, 3 tunnels.
- Two snap closure with brass zipper and two set-in buttoned back pockets.
- Full fit through hips, thigh and calf area.
- Double stitched crotch and double knees.
- Coverseamed back rise, side and inseams.
- Standard inseam: 37" un-hemmed.
(Inseam must be specified: 20"-36")
- Price includes the cost to hem length.
- "R RUSSELL" back left hip.
- Imported.

Options:

1/8" Braid down sides	\$ 6.00
1/2" Braid down sides	\$10.00
1" Braid down sides	\$12.00
1 1/2" Braid down sides	\$15.00
Hemmed leg end	N/C
Hemmed leg bottom with elastic	N/C

NOTES:

Fuller cut pant
Custom Pant version: 33347CP
10% Upcharge for oversize 44-48

RELAXED "DIAMOND FIT SERIES" PANT WITH MESH INSERTS

338LGMK - LG Cloth \$44.00
338LGBK - LG Cloth \$34.00
100% Stretch Polyester Double Knit

Sizes: Adult: S-XXL Oversize: 3XL Youth S-XL

- Stretch mesh inserts to allow better range of motion and breathability.
- 2 1/4" Ultra comfortable elastic waistband with silicone gripper, 4 front belt loops, 3 tunnels.
- Two snap closure with brass zipper and two set-in welted back pockets.
- Full fit through hips, thigh and calf area.
- Double stitched crotch and double knees.
- Coverseamed back rise, side and inseams.
- Hemmed boot cut.
- "R RUSSELL" back left.
- Imported.

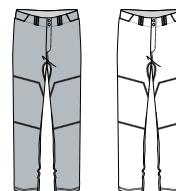
Options:

1/8" Braid down sides	\$ 6.00
1/2" Braid down sides	\$10.00
1" Braid down sides	\$12.00
1 1/2" Braid down sides	\$15.00
Knicker Length	\$ 8.00

Notes: 3XL is 10% upcharge, Custom Pant Hookup: 338LGCP



Adult Graded Inseams	Youth Graded Inseams
S - 31"	S - 27"
M - 32"	M - 28"
L - 33"	L - 29"
XL - 33"	XL - 30"
XXL - 34"	
3XL - 35"	



BG7
Baseball
Grey

WHI
White



NEW

BASEBALL PIPED OPEN BOTTOM GAME PANT

233L2MK - L2 Cloth

\$30.00

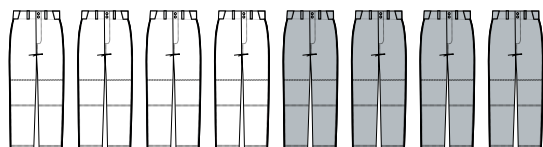
233L2BK - L2 Cloth

\$28.00

100% Polyester Stretch Double Knit

Sizes: Adult: S-XXL Youth S-XL

- 2 ½" deluxe elastic waistband with 4 front belt loops, single belt loops centered over 2 set-in back pockets and 3 tunnels.
- Concealed two snap closure with brass zipper.
- Double stitched crotch and double knees.
- Coverseamed back rise and side seams.
- Hemmed open bottom.
- Adult Standard Inseam: Size S-31", M-32", L-33", XL-33", XXL-34".
- Youth Standard Inseam: Size S-28", M-29", L-30", XL-31".
- "R RUSSELL" back left hip.
- Imported.



WBK
White/
Black

WNA
White/
Navy

WRO
White/
Royal

WTR
White/
True
Red

B9B
Baseball
Grey/
Black

B9N
Baseball
Grey/
Navy

B9R
Baseball
Grey/
Royal

B9T
Baseball
Grey/
True
Red

BOOT CUT GAME PANT

234DBMK - DB Cloth

\$24.00

234DBBK - DB Cloth (Youth)

\$21.00

100% Polyester Double Knit

Adult Sizes: S-XXL Youth Sizes: XS-XL

- 2 ½" deluxe elastic waistband with 4 front belt loops, single belt loops centered over 2 set-in back pockets and 3 tunnels.
- Concealed two snap closure with brass zipper.
- Double stitched crotch and double knees.
- Coverseamed back rise and side seams.
- Hemmed boot cut.
- Adult Standard Inseam: Size S-30", M-31", L-32", XL-33", XXL-34".
- Youth Standard Inseam: Size XS-26", S-27", M-28", L-29", XL-30".
- "R RUSSELL" back left hip.
- Imported.

Options:

1/8" Braid down sides

\$ 6.00

1/2" Braid down sides

\$10.00

1" Braid down sides

\$12.00

NOTES:

Boot Cut



BG7
Baseball
Grey



BLK
Black



WHI
White

BG7
Baseball
GreyBLK
BlackNAV
NavyWHI
White

BASEBALL GAME PANT

236DBMK – DB Cloth

\$21.00

236DBBK – DB Cloth – Youth

\$19.00

100% Polyester Double Knit

Adult Sizes: S-XXL

Youth Sizes: XS-XL

- 2" deluxe elastic waistband with one set-in back pocket.
- 2 front belt loops and 3 tunnels.
- Two snap closure with brass zipper.
- Double stitched crotch and double knees.
- Coverseamed back rise.
- Elastic leg hem.
- Adult Standard Inseam: Size S-28", M-29", L-30", XL-31", XXL-32".
- Youth Standard Inseam: Size XS-24", S-25", M-26", L-27", XL-28".
- "R RUSSELL" back left hip.
- Imported.

Options:

1/8" Braid down sides

\$ 6.00

1/2" Braid down sides

\$10.00

1" Braid down sides

\$12.00

MEN'S ESSENTIAL POLO

NEW

872RVMK - (Adult)

\$40.00

872RVBK - (Youth)

\$35.00

100% Polyester Woven

Adult Sizes: S-XXL Oversize: 3XL Youth Sizes: S-XL

- Very lightweight breathability fabric.
- Moisture wicking capability.
- Full cut body with quarter zip neck to go over uniform.
- Waist has shock cord with cord lock on wearers left.
- 4 side sew label lower left front.
- "R RUSSELL" left sleeve end.
- Imported.

Decoration Type:

Embroidery, Twill

Decoration Placements:

8, 9, 32, 35, BN

BWK
Black/
WhiteCWH
Cardi-
nal/
WhiteDGW
Dark
Green/
WhiteMWH
Ma-
roon/
WhiteNWH
Navy/
WhitePWH
Purple/
WhiteROW
Royal/
WhiteTRW
True
Red/
WhiteXDE
White/
Stealth

* Youth is only available in these colors



LONG SLEEVE PULLOVER

875QXMK - QX Cloth
100% Polyester

CLOSEOUT: \$32.00

Sizes: S-XXL Oversize: 3XL

- Dri-Power® moisture wicking fabric.
- Full cut body with quarter zip neck.
- Body and sleeves, 100% Polyester with mechanical stretch.
- Underarm inserts, upper back inserts, and sleeve binding. (100% Polyester with mechanical stretch)
- Waist has shock cord with cord lock on wearer's left.
- 4 side sew label lower left front.
- 3/8" stretch binding at sleeve end.
- "R RUSSELL" center back neck.
- Imported.

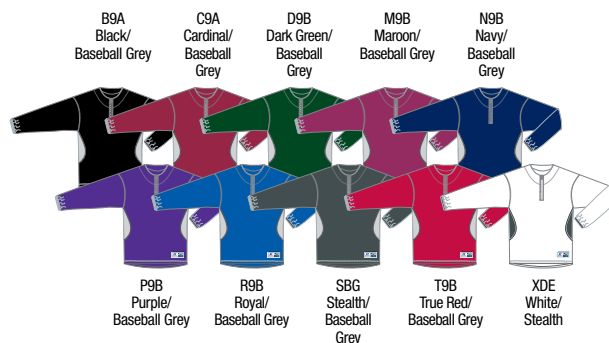
Decoration Type:

Screenprint, Embroidery, Twill

Decoration Placements:

1, 3, 6, 7, 7C, 8, 9, 10, 11, 32, 35, 36, BN

INVENTORY ONLY



DUGOUT JACKET

814LRMK - LR Cloth
100% Texturized Nylon Polyester Fill Lining

CLOSEOUT: \$75.00

Sizes: S-XXL Oversize: 3XL

- Water resistant.
- Full snap front (covered metal snaps).
- Polyester fill diamond quilted lining.
- Raglan sleeves.
- 1/8" contrast start and stop piping at front and back raglan seams.
- Contrasting side panels.
- Solid rib knit collar, cuff and bottom band.
- Single welt front pockets.
- "R RUSSELL" Center back neck.
- Imported.

Decoration Type:

Embroidery, Twill

Decoration Placements:

3, 7, 8, 9, 32, 35

INVENTORY ONLY



ADJUSTABLE BASEBALL BELT

BBBELTA (Adult)	\$7.00
BBBELTY (Youth)	\$7.00

Sizes: OSFA; Adjustable 32"-46" (Adult)
 Sizes: OSFA; Adjustable 18"-32" (Youth)



- 1 ½" Wide elastic belt.
- Metal adjustable slide.
- Metal buckle.
- Coated split leather tab.
- "R RUSSELL" embossed on tab.
- Imported.

Notes:

Replaces the BBBELT0.

Reduced width for a better fit on youth baseball pants.

	BLK	Black
	BOR	Burnt Orange
	CRD	Cardinal
	CBU	Columbia Blue
	DGR	Dark Green
	GLD	Gold
	MAR	Maroon
	NAV	Navy
	PUR	Purple
	ROY	Royal
	TRR	True Red

"R" Russell logo color is tonal as shown in image

BIKE® PERFORMANCE COTTON™ PEE WEE BRIEF COMBO - INCLUDES CUP

BPC027 - Pee Wee
86% Polyester, 14% Spandex
Pouch: 100% Polyester

Sizes: Pee Wee - XS

Color Code: WHI

\$16.50

INVENTORY ONLY

- Protection for athletes in high impact sports.
- 95% Cotton; 5% Spandex; Pouch exterior: 100% Polyester; Interior 100% Polyester Dri-Power.®
- Dri-Power® moisture wicking fabric cup pouch.
- 1-12" standard waistband with content jock tag.
- **PRO-EDITION™** cup included.
- Imported.

BIKE® PERFORMANCE ELITE™ BOXER INCLUDES CUP POCKET

BACP31 - Adult
Body - 86% Polyester, 14% Spandex
Pouch: 100% Polyester

Sizes: Adult (S-XL)

Color Code: GRY

\$23.00

INVENTORY ONLY

- Moisture wicking fabric.
- Odor prevention properties added.
- Dri-Power® moisture wicking fabric cup pouch.
- 1½" push waistband with jock tag.
- Cup not included.
- Imported.

BIKE® PERFORMANCE ELITE™ CUP STRAP ONLY

BACP11 - Adult
Body - 86% Polyester, 14% Spandex

Sizes: Adult (S-XXL)

Color Code: GRY

\$11.00

INVENTORY ONLY

- Moisture wicking fabric.
- Odor prevention properties added.
- Dri-Power® moisture wicking fabric cup pouch.
- 2" push waistband with jock tag. 3/4" Leg straps.
- Cup not included.
- Imported.

RUSSELL DUAL-LAYERED SLIDING SHORT WITH CUP POCKET

RASL35 - Adult
RYSL35 - Youth

Sizes: Adult (S-XXL) Youth (S-XL)

Color Code: WHI

\$28.50

\$26.50

INVENTORY ONLY

- 85% Nylon; 15% Spandex.
- Dual layered fabric on side panels for additional protection against strawberries or abrasions.
- Cup pocket made in moisture management fabric.
- Odor management properties.
- 1-1/2" "Russell" branded plush elastic waistband with jock tag.
- Mid-thigh length.
- Imported.

BIKE® PERFORMANCE COTTON™ SWIM/JOGGER SUPPORTER

BASJ17B - Adult (2 Unit Pack)

Sizes: Adult (S-XXL)

Color Code: WHI

\$13.00

INVENTORY ONLY

- Athletic supporters are designed to support, protect, fight fatigue and reduces risk of strains.
- Performance support with the feel of cotton.
- Pouch: 55% Nylon; 25% Rubber; 20% Cotton.
- 1" standard elastic waistband with fabric content label.
- 3/4" Leg strap.
- Supporter pouch - **NOT A CUP POUCH.**

BIKE® PERFORMANCE COTTON™ STRAP SUPPORTER

BASP17 - Adult (Single Pack)

BASP17B - Adult (2 Unit Pack)

BADZ17 - Adult (Schoolpack)

Sizes: Adult (S-XXL) Teen (M-L)

*3XL in BADZ17 School Pack only

Color Code: BLK, WHI (Adult); WHI only (Teen/Youth)

\$7.00

\$12.50

\$75.60 DZ

INVENTORY ONLY

- Athletic supporters are designed to help support, protect, fight fatigue and reduces risk of strains.
- Performance support with the feel of cotton.
- Pouch: 55% Nylon; 25% Rubber; 20% Cotton.
- 2" standard elastic waistband with fabric content label.
- 3/4" Leg strap.
- School Pack- Sold in dozens per size.
- Supporter pouch - **NOT A CUP POUCH.**

BIKE® PERFORMANCE COTTON™ BOXER NO FLY FRONT

7131 - Adult
86% Polyester, 14% Spandex

Sizes: Adult (S-XXL)

Color Code: BLK, HGY, WHI

\$22.00

INVENTORY ONLY

- Designed to provide athletes with functional support and compression.
- Designed for everyday wear or game day performance.
- 95% Cotton; 5% Spandex.
- Mid-length for reduced chaffing.
- No-fly front.
- 1½" elastic waistband for comfort and better fit.

2017 WOMEN'S BASE HIT

STOCK DECORATED PROGRAM



NEW

7R6X2XK (Adult)



NEW

**7R8X2XK (Adult)
7R8X2GK (Youth)**

PROGRAM DATES:

1/9/2017 - 6/26/2017

TURN TIME:

Uniforms will be delivered 12-15 Business Days from order date

NEW ORDERS:

Minimum of 15 pieces per style, color and decoration

DECORATION:

Jerseys:

1 or 2 Color Russcote

Includes Team Name and Front and Back Numbers

Fonts - Team Name Available in Script with Tailsweep, Script, Full Block, Times Bold, Stinger

Numbers Available in Full Block, Times Bold, Stinger

Placements:

Team Name Placements: 7

Numbers: 4" Front Number PL# 10 or 11 and 6" or 8" Back Number PL# 6

RUSSELL ATHLETIC

QUICK TURN BRAID PROGRAM

HIGH QUALITY SOFTBALL PANTS

20 PREMIUM TEAM COLOR BRAID OPTIONS

SHIPS IN 5 WORKING DAYS!!!



SIDE VIEW



BACK VIEW

738LGXK

**WOMEN'S KNICKER LENGTH
DIAMOND FIT SOFTBALL PANT**

\$46.00

PROGRAM DETAILS

- 1 Braid Type: 106 - 1/8" - Pattern 0
- Colors: 20 Current Stock Colors

GT Gold	Gold	Navy	Marlin Aqua	White	Kelly	Royal	Burnt Orange	True Red	Purple
Black	Dark Green	Maroon	Cardinal	Columbia Blue	Gridiron Silver	Baseball Grey	Seal Brown	Texas Orange	Stealth

- No minimums but normal up-charges will apply for orders less than 6 units
- Order Entry Catalog: Under the Factory Stock Tab called, "Quick Turn Braid Program"
- Normal discounts and terms apply
- Program Starts 1/18/16

*** PRICES ABOVE ARE RETAIL PRICES THAT
INCLUDE THE PRICE FOR 1/8" BRAID**



NEW

WOMEN'S STRETCH FAUX BUTTON FRONT JERSEY

737VTX1 - VT Cloth

\$44.00

92% Nylon / 8% Spandex - Colors

92% Polyester / 8% Spandex - White

Sizes: S-XXL

- Faux placket pullover jersey with raglan sleeves.
- Dri-Power® moisture wicking fabric.
- Modified sleeve length.
- Tapered waist and curved hemmed bottom.
- Back panel wraps to front with no side seam.
- 4 Side sew label lower left front.
- "R RUSSELL" logo left sleeve.
- Imported.

Options:

1/8" Braid around neck and down front	\$12.00
1/2" Braid around neck and down front	\$13.00
1/8" Braid 1" up from sleeve ends	\$ 8.00
1/2" Braid 1" up from sleeve ends	\$ 9.00
1/2" Braid on sleeve end	\$ 9.00

Decoration Type:

Screen Print, Embroidery, Twill

Decoration Placements:

6, 7N*, 8, 9, 10, 11, 32, 35, BN*

Screen Print not available for placement 7N

Screen Print ONLY for BN

Notes:

Updated sleeve length for freedom of movement.

Faux placket pullover jersey – sewn placket allows for cleaner twill decoration by eliminating gapping between buttons.



COLORS



BG7
Baseball Grey

BLK
Black

CRD
Cardinal

DGR
Dark Green

MAR
Maroon

NAV
Navy

PUR
Purple

ROY
Royal

TRR
True Red

WHI
White

NEW

WOMEN'S 2-BUTTON COLOR BLOCK JERSEY

7R6X2XK - X2 Cloth
100% Polyester Interlock

\$20.00

Sizes: S-XXL

- Two button placket jersey with set-in sleeves.
- Self-material piping in the insert.
- HS Cloth in side and upper shoulder insert for more breathability.
- Curved hemmed bottom.
- Pad print label at inside center back neck.
- Neck taping with Russell Athletic branded.
- "R RUSSELL" left sleeve.
- Imported.

Decoration Type:

Screen Print

Decoration Placements:

3, 6, 7, 8, 9, 10, 11, 32, 35, BN

Notes:

Low bleed ink recommended.



COLORS



B9A Black/ Baseball Grey	B9O Burnt Orange/ Baseball Grey	C9C Columbia Blue/ Baseball Grey	C9A Cardinal/ Baseball Grey	D9B Dark Green/ Baseball Grey	G9L Gold/ Baseball Grey	M9B Maroon/ Baseball Grey	N9B Navy/ Baseball Grey	P9B Purple/ Baseball Grey	R9B Royal/ Baseball Grey	T9B True Red/ Baseball Grey
--------------------------------	---------------------------------------	--	-----------------------------------	-------------------------------------	-------------------------------	---------------------------------	-------------------------------	---------------------------------	--------------------------------	-----------------------------------

NEW

PERFORMANCE V-NECK SOFTBALL JERSEY

7R8X2XK – X2 Cloth

\$20.00

7R8X2GK – X2 Cloth (Youth)

\$18.00

100% Polyester Interlock

Sizes: S-XXL

Youth Sizes: S-XL

- Moisture wicking fabric.
- V-neck self-material neck.
- White front to a color back body to give more of a custom look.
- Russell Athletic logo in neck taping.
- "R RUSSELL" on left sleeve.
- Imported.

Decoration Type:

Screen Print

Decoration Placements:

3, 6, 7, 8, 9, 10, 11, 32, 35, BN



COLORS



WBK
White/Black

WBG
White/
Burnt Orange

WCA
White/Cardinal

WDG
White/Dark Green

WHM
Maroon/White

WNA
White/Navy

WPU
White/Purple

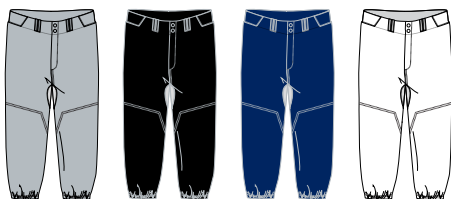
WRO
White/Royal

WTR
White/True Red



BACK VIEW

SIDE VIEW

BG7
Baseball GreyBLK
BlackNAV
NavyWHI
White

WOMEN'S LOW RISE KNICKER LENGTH PANT

7S4DBXK - DB Cloth
100% Polyester Double Knit

\$32.00

Sizes: XS-XXL

- Low rise to hit 2" below the natural waist.
- Elastic waistband with shaped belt loops.
- Two single welt rear pockets.
- Two snap closure with brass zipper.
- Double knees extending to bottom opening.
- Elastic hemmed leg opening.
- Inseam length designed to hit under the knee.
- Standard Inseam: XS- 17", S- 18", M- 19", L- 20", XL- 21", XXL- 22".
- "R RUSSELL" logo back left hip.
- Imported.

Options:

1/8" Braid down side seam	\$ 6.00
1/2" Braid down side seam	\$10.00
1" Braid down the side seamm	\$12.00
1 1/2" Braid down the side seam	\$15.00

Notes:

Pant will hook-up to most jerseys.

WOMEN'S LOW RISE KNICKER "DIAMOND FIT SERIES" PANT

738LGXK - LG Cloth

\$40.00

Sizes: XS-XXL

- Mesh inserts for breathability and better range of motion during play.
- Two set-in rear pockets with zipper closure.
- Low rise to hit 2" below the natural waist.
- Stretch elastic waistband for better movement and silicone gripper to keep your jersey in.
- Shaped with belt loops.
- Two snap closure with brass zipper.
- Two set-in rear pockets with zipper closure.
- Double knees.
- Open bottom pant hemmed leg opening.
- Graded Inseam: XS-17", S-18", M-19", L-20", XL-21", XXL-22".
- "R RUSSELL" logo back left.
- Imported.

Options:

1/8" Braid down sides	\$ 6.00
1/2" Braid down sides	\$10.00
1" Braid down sides	\$12.00

BG7
Baseball GreyBLK
BlackNAV
NavyWHI
White



GIRLS LOW RISE KNICKER LENGTH PANT WITH BELT LOOPS

7S3DBGK - DB Cloth (Girls)
100% Polyester Double Knit

\$23.50

Girls Sizes: S-L

- Low rise to hit 2" below the natural waist.
- Elastic waistband with belt loops and one single welt rear pocket.
- Two snap closure with brass zipper.
- Double knees extending to bottom opening.
- Elastic hemmed leg opening.
- Inseam length designed to hit under the knee.
- Standard Inseam: S-L: 17".
- "R RUSSELL" logo back left hip.
- Imported.

Options:

1/8" Braid down side seam	\$ 6.00
1/2" Braid down side seam	\$10.00
1" Braid down the side seamm	\$12.00

Notes:

Pant has one welt rear pocket on left and drawcord in elastic waistband.



BG7
Baseball Grey

BLK
Black

NAV
Navy

WHI
White

SHORT SLEEVE PULLOVER

NEW

872RVMK - RV Cloth

\$40.00

872RVBK - RV Cloth (Youth)

\$35.00

100% Polyester Woven

Adult Sizes: S-XXL Oversize: 3XL Youth Sizes: S-XL

- Very lightweight breathability fabric.
- Moisture wicking capability.
- Full cut body with quarter zip neck to go over uniform.
- Waist has shock cord with cord lock on wearer's left.
- 4 side sew label lower left front.
- "R RUSSELL" left sleeve end.
- Imported.

Decoration Type:

Embroidery, Twill

Decoration Placements:

7C, 8, 9, 32, 35, BN, N4



* Youth is only available in these colors



LONG SLEEVE PULLOVER

875QXMK - QX Cloth
100% Polyester

CLOSEOUT: \$32.00

Sizes: S-XXL Oversize: 3XL

- Dri-Power® moisture wicking fabric.
- Full cut body with quarter zip neck.
- Body and sleeves, 100% Polyester with mechanical stretch.
- Underarm inserts, upper back inserts, and sleeve binding. (100% Polyester with mechanical stretch)
- Waist has shock cord with cord lock on wearer's left.
- 4 side sew label lower left front.
- 3/8" stretch binding at sleeve end.
- "R RUSSELL" center back neck.
- Imported.

Decoration Type:

Screen Print, Embroidery, Twill

Decoration Placements:

1, 3, 6, 7, 7C, 8, 9, 10, 11, 32, 35, 36, BN

INVENTORY ONLY



DUGOUT JACKET

814LRMK - LR Cloth

CLOSEOUT: \$75.00

100% Texturized Nylon Polyester Fill Lining

Sizes: S-XXL Oversize: 3XL

- Water resistant.
- Full snap front. (covered metal snaps)
- Polyester fill diamond quilted lining.
- Raglan sleeves.
- 1/8" contrast start and stop piping at front and back raglan seams.
- Contrasting side panels.
- Solid rib knit collar, cuff and bottom band.
- Single welt front pockets.
- "R RUSSELL" center back neck.
- Imported.

Decoration Type:

Embroidery, Twill

Decoration Placements:

3, 7, 8, 9, 32, 35

INVENTORY ONLY





"R" Russell logo color is tonal as shown in image.

ADJUSTABLE BASEBALL BELT

BBBELTA – (Adult)

\$7.00

BBBELTY – (Youth)

\$7.00

Sizes: OSFA; Adjustable 32"-46" (Adult), Adjustable 18"-32" (Youth)

- Dri-Power® moisture wicking fabric.
- Full cut body with quarter zip neck.
- Body and upper sleeves, 100% polyester with mechanical stretch.
- Lower sleeve inserts, back inserts, and sleeve end. (100% Polyester mesh with mechanical stretch)
- Waist has shock cord with cord lock on wearer's left.
- 4 side sew label lower left front.
- "R RUSSELL" center back neck.
- Imported.

Notes:

Reduced width for a better fit on youth baseball pants.





RUSSELL WOMEN'S DUAL LAYERED LO-RISE SLIDING SHORT

RWL629 - Women's \$27.00

SIZES: Women's (XS-XL)

COLOR CODE: BLK, DMP, NAV, ROY, SIG, WHI

- Body: 85% Polyester; 15% Spandex; Gusset: 90% Polyester; 10% Spandex.
- Dual layered to aid in prevention of abrasions.
- Excellent for most contact sports.
- Moisture management and antimicrobial properties.
- 6" Inseam (XS-L) 6-1/4" (XL).
- 1" "Russell" branded plush elastic waistband.
- Imported.

INVENTORY ONLY



BIKE® ADULT SOFTBALL KNEE PAD

BASBKP - Women's \$23.00

SIZES: Adult (NS) Fits Most

COLOR CODE: BLK, WHI

- 42% Polyester, 41% Elastic, 17% Rayon.
- Pull-on sleeve construction excellent for sliding.
- Provides side and frontal knee protection with 3/8" neoprene padding.
- Sold in single packs only.

INVENTORY ONLY



BIKE® ADULT CONTOURED KNEE PAD

BAKP75 - Adult \$12.50

SIZES: Adult (XS-L)

COLOR CODE: BLK, WHI

- Contoured design for multi-sport use.
- 100% Polyester outer covering.
- 7 1/4" length.
- New! Dri-Power® moisture wicking lining.
- 3/8" foam pad, plus 1/4" urethane padding.
- Sold in pairs.
- REPLACES ORIGINAL STYLE 7275.
- Minimum order quantity 2.

INVENTORY ONLY



RUSSELL ATHLETIC® 3" WRIST BAND

RAWB15 - Adult \$8.50

SIZES: NS

COLOR CODE: BLK, CBU, C03, CRD, DGR, DMP, GAT, MAR, NAV, ROY, TRR, WHI

- **MP Inventory Only.**
- Expandable knitted construction that allows sweat to be absorbed.
- Embroidered Russell® branded logo.
- Sold in pairs.



RUSSELL ATHLETIC® 2" HEADBAND

RAHB10 - Adult \$10.00

SIZES: NS

COLOR CODE: BLK, CBU, C03, CRD, DGR, DMP, GAT, MAR, NAV, ROY, TRR, WHI

- **DMP Inventory Only.**
- Expandable knitted construction that allows sweat to be absorbed.
- Embroidered Russell® branded logo.

SIZES

	XS	S	M	L	XL
RWL629 - Waist Size	22-24"	24-26"	28-30"	32-34"	34-36"
BAKP75 - Knee Circumference	10-13"	10-13"	14-15"	15-17"	

**OVER 100 YEARS AGO, RUSSELL ATHLETIC WAS BORN ON THE
PLAYING FIELDS OF AMERICA. NOW, IN AN ERA OF DECREASING
TEAM SPORTS PARTICIPATION AND INCREASING EGO, HYPE AND
SELFISHNESS, THE BRAND IS BACK TO BECOME THE EXPERT AND
DEFENDER OF TEAM SPORTS. INSTITUTIONAL SPORTS. THE
BIRTHPLACE OF TEAM. WHERE ATHLETES PLAY FOR EACH OTHER,
THEIR COACH AND THEIR TOWN. WHERE TEAM NEVER STOPS.**



TEAM ON



NEW

ADULT SOLID JERSEY WITH SIDE INSERTS

S8693M1 - 93 Cloth
100% Nylon Tricot Mesh-Colors
100% Polyester Tricot Mesh-White

\$35.00

Sizes: S-XXL Oversize: 3XL

- 93 Cloth mesh jersey that combines strength and comfort.
- Reinforced 73 Cloth yoke for added durability in contact areas.
- Skill cut 73 Cloth sleeves for complete pad coverage.
- Side and Under sleeve 69 Cloth insert for tailored fit.
- Imported.

Decoration Placements:

1, 2A, 2B, 3 or BN, *6, 7, 9C, SV, YL

Notes:

*10" Max Numbers on Back

Belt Length

Youth equivalent: S8693W1

\$4.00



ADULT STRETCH MESH GAME JERSEY

S05SMMK - SM Cloth
90% Nylon / 10% Spandex-Colors
90% Polyester / 10% Spandex-White

\$63.00

Sizes: S-XXL Oversize: 3XL

- Durable, compression fit stretch mesh delivers unrestricted range of motion.
- Reinforced 73 cloth yoke for added durability in contact area.
- Skill cut 73 Cloth sleeves for complete pad coverage.
- Imported.

Decoration Placements:

1, 2A, 2B, 3 or BN, *6, 7, 7X, 9C, 9X, SV, YL

Notes:

*10" Max Numbers on Back

Belt Length

\$4.00



ADULT COLOR BLOCK GAME JERSEY

S6793MK - 93 Cloth
100% Nylon Tricot Mesh-Colors
100% Polyester Tricot Mesh-White

\$54.00

Sizes: S-XXL Oversize: 3XL

- 93 Cloth jersey that combines strength and comfort.
- Reinforced 73 Cloth yoke for added durability in contact areas.
- Skill cut 73 Cloth sleeves for complete pad coverage.
- Neck design for added air flow and style.
- Imported.

Decoration Placements:

1, 3 or BN, *6, *7, 7X, 9C, 9X, SV, YL

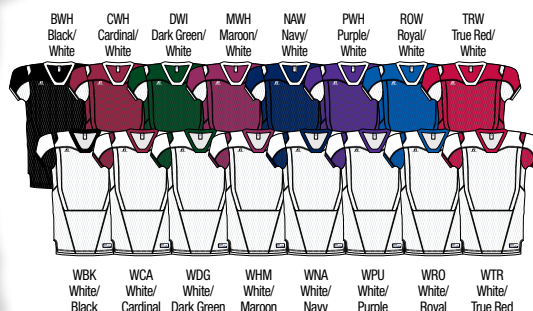
Notes:

*8" Max Front #'s / 10" Max Back #'s

Belt Length

Youth Equivalent: **S8693W1**

\$4.00





S57Z7MK - "Home Jersey"
Colored Body with White Neck, Cuffs and Piping



S57Z7M1 - "Away Jersey"
White Body with Contrast Sleeves, Neck, Cuffs and Piping



ADULT COLOR BLOCK GAME JERSEY

S57Z7MK - Z7 Cloth "HOME JERSEY" \$79.50

S57Z7M1 - Z7 Cloth "AWAY JERSEY" \$79.50

88% Nylon / 12% Spandex-Colors
88% Polyester / 12% Spandex-White

Sizes: S-XXL Oversize: 3XL

- Exclusive Z7 cloth delivers the lightest, strongest, most durable engineered football Jersey.
- Built in fabric technology helps to resist stains and wick moisture.
- Reinforced 73 cloth yoke for added durability in contact area.
- Front, back and side Z7 Cloth inserts provide superior ventilation.
- Imported.

Decoration Placements:

1, 2A, 2B, 3 or BN, 66, 7, 9C, 9X, 7X, SV, YL

Notes:

Belt Length

Blitz Concept: **S57Z7MM**

\$4.00

ADULT COLOR BLOCK GAME JERSEY

S65XCMK - XC Cloth
86% Nylon / 14% Spandex-Colors
87% Polyester / 13% Spandex-White

\$79.50

Sizes: S-XXL Oversize: 3XL

- Xtreme Compression cloth is full compression, designed to lock in shoulder pads, be tight to the chest and provide maximum mobility.
- Z7 front, back and side inserts provide superior ventilation.
- Reinforced XC yoke for added durability in contact area, without sacrificing compression.
- Imported.

Decoration Placements:

1, 2A, 2B, 3 or BN, *6, 7, 9C, 9X, 7X, SV, YL

Notes:

*10" Max Numbers on Back

Belt Length

Blitz Concept: **S65XCMM**

\$4.00





SOLID MESH JERSEY

S9593MK - 93 Cloth **\$22.00**
 100% Nylon Tricot Mesh-Colors
 100% Polyester Tricot Mesh-White

Sizes: S-2XL Oversize: 3XL

- 93 Cloth mesh jersey that combines strength and comfort.
- Reinforced 93 Cloth yoke for added durability in contact areas.
- Imported.

Decoration Placements:

1, 2A, 2B, 3 or BN, *6, 7, 9C, SV, YL

Notes:

*10" Max Numbers on Back

Belt Length

1 ½" Braid overlay on yoke

Youth Equivalent: **S95AHWK**

\$4.00

\$7.00

INVENTORY ONLY

STOCK PRACTICE JERSEY

S096BMK - 6B Cloth **\$16.50**

Sizes: Adult M, XL Oversize: 3XL

- Mini porthole mesh body.
- Medium weight dazzle warp knit sleeves and double ply yoke.
- 1" Crossover rib knit V-neck.
- Imported.

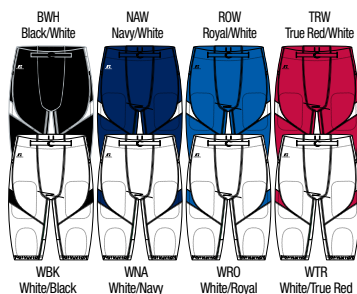
Decoration Placements:

1, 2A, 2B, 3, 6, 7, 9C, SV, YL

Notes:

Decoration: Screen Print Only





ADULT GAME PANT WITH CONTRASTING SIDE / FRONT INSERTS

F65XPMK - XP Cloth (No Fly)

\$63.00

Sizes: XS-XXL Oversize: 3XL

- Lightweight Xtreme Power performance pant is designed for max range of motion, comfort and durability.
- Z7 Cloth Upper inseam & side inserts for superior ventilation.
- 2 1/2" elastic waist with gripper technology keeps the jersey tucked.
- Envelope thigh and knee pad pockets.
- Imported.

Options:

1 1/2" FBC73M1 belt inserted & bar tacked

\$15.00

Decoration Type: Embroidery, Twill

Decoration Placement: 18

Notes: Blitz Concept: Adult F65XPMM

ADULT DELUXE GAME PANT

F25XPMF - XP Cloth (No Fly)

\$58.50

82 % Nylon / 18% Spandex-Colors
82% Polyester / 18% Spandex-White

Sizes: XS-2XL Oversize: 3XL

- Lightweight Xtreme Power performance pant is designed for max range of motion, comfort and durability.
- 2 1/2" elastic waist with gripper technology keeps the jersey tucked.
- Envelope thigh and knee pad system holds pads firmly in place.
- Imported.

Options:

1" Side braid

\$ 6.00

1 1/2" Side braid

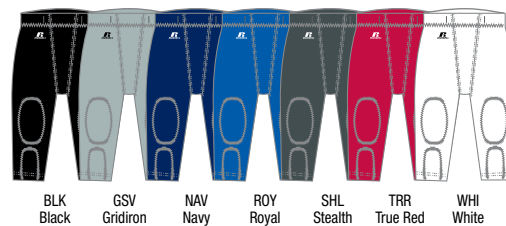
\$ 6.50

1 1/2" FBC73M1 belt inserted & bar tacked

\$15.00

Decoration Type: Embroidery, Twill

Decoration Placements: 18, 27, 28



ADULT DELUXE GAME PANT

F2562MF - 62 Cloth (No Fly)

\$45.00

92% Nylon / 8% Spandex-Colors
92% Polyester / 8% Spandex-White

Sizes: XS-2XL Oversize: 3XL

- Performance pant delivers full range of motion, comfort and durability.
- 2 1/2" elastic waist with gripper technology keeps the jersey tucked.
- Envelope thigh and knee pad system holds pads firmly in place.
- Imported.

Options:

1" Side braid

\$ 6.00

1 1/2" Side braid

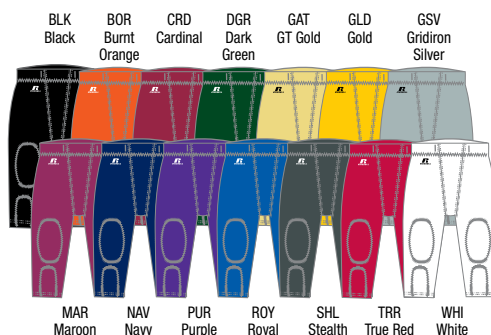
\$ 6.50

1 1/2" FBC73M1 belt inserted & bar tacked

\$15.00

Decoration Type: Embroidery, Twill, Russcote

Decoration Placements: 18, 27, 28





ADULT INTEGRATED 7 PIECE PAD PANT

F25PFMP -PF Cloth (No Fly)
100% Polyester Double Knit

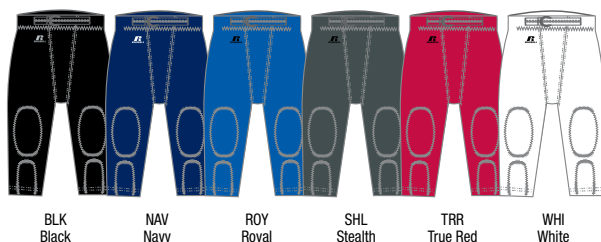
\$33.50

Sizes: S-XL

- 7 piece integrated pad set includes:
- Ventilated hip and spine pads.
- Reinforced thigh pads.
- Contoured knee pads.
- 1" web belt inserted and bar tacked.
- Imported.

Options and Decoration:

Not available



PRACTICE PANT

F25PFMF - PF Cloth (No Fly w/ concealed slots)
100% Polyester Double Knit

\$18.50

Sizes: XS-2XL Oversize: 3XL-4XL

- Polyester double knit body.
- 2 ½" Elastic tunnel waist with concealed slots.
- Envelope thigh and knee pad pockets.
- Imported.

Options:

1" Side braid	\$6.00
1 ½" Side braid	\$6.50

Decoration Type:

Embroidery/Twill

Decoration Placement:

18

Notes:

Youth equivalent: **F25PFWF**





NEW YOUTH SOLID JERSEY WITH SIDE INSERTS

S8693W1 - 93 Cloth \$26.00
100% Nylon Tricot Mesh-Colors
100% Polyester Tricot Mesh-White

Sizes: S-XXL

- 93 Cloth mesh jersey that combines strength and comfort.
- Reinforced 73 Cloth yoke for added durability in contact areas.
- Skill cut 73 Cloth sleeves for complete pad coverage.
- Side and Under sleeve 69 Cloth insert for tailored fit.
- Imported.

Decoration Placements:

1, 2A, 2B, 3 or BN, *6, 7, 9C, SV, YL

Notes:

8" Max Front #'s / 10" Max Back #'s

Belt Length

\$4.00

Adult Stock - **S8693M1**



YOUTH COLOR BLOCK GAME JERSEY

S67AHWK - AH Cloth \$34.50
100% Nylon Tricot Mesh-Colors
100% Polyester Tricot Mesh-White

Sizes: S-2XL Oversize: 3XL

- Lightweight jersey constructed for mobility and comfort.
- Reinforced AZ Cloth yoke for added durability in contact areas.
- Skill cut AZ Cloth sleeves for complete pad coverage.
- Imported.

Decoration Placements:

1, 3 or BN, *6, 7 or **7X, 9C, 9X, SV, YL

Notes:

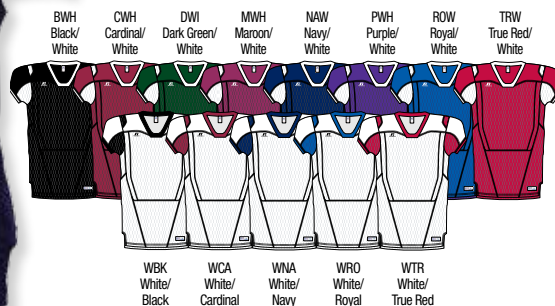
*8" Max Back #'s

**6" Max Front #'s

Belt Length

\$4.00

Adult Stock - **S6793MK**



YOUTH COLOR BLOCK GAME JERSEY

S68AHWK - AH Cloth \$34.50
100% Nylon Tricot Mesh-Colors
100% Polyester Tricot Mesh-White

Sizes: S-XXL Oversize: 3XL

- Lightweight jersey constructed for mobility and comfort.
- Reinforced AZ Cloth yoke for added durability in contact areas.
- Skill cut AZ Cloth sleeves for complete pad coverage.
- Imported.

Decoration Placements:

2A, 2B, 3 or BN, *6, *7, 9C, 9X, 7X, YL

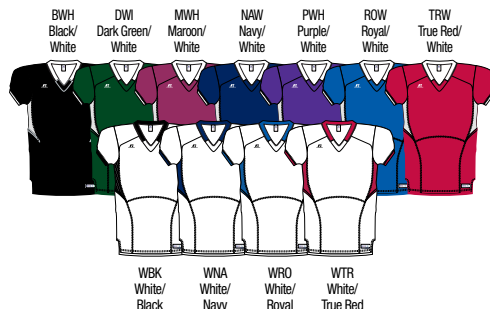
Notes:

*6" Max Front #'s / 8" Max Back #'s

Belt Length

\$4.00





YOUTH COLOR BLOCK GAME JERSEY

S65AHWK - AH Cloth
100% Nylon Tricot Mesh-Colors
100% Polyester Tricot Mesh-White

\$24.00

Sizes: S-2XL

- Lightweight jersey constructed for mobility and comfort.
- Reinforced AZ Cloth yoke for added durability in contact areas.
- Skill cut AZ Cloth sleeves for complete pad coverage.
- Imported.

Decoration Placements:

1, 2A, 2B, *3 or BN, 6, 7, 9C, SV, YL

Notes:

2" Max Name / *8" Max Numbers on Back
Belt Length

\$4.00

INVENTORY ONLY

YOUTH SOLID MESH JERSEY

S95AHWK - AH Cloth
100% Nylon Tricot Mesh-Colors
100% Polyester Tricot Mesh-White

\$16.00

Sizes: S-2XL

- Lightweight jersey constructed for mobility and comfort.
- Reinforced AH Cloth yoke for added durability in contact areas.
- 7" Hemmed sleeves with elastic.
- Imported.

Decoration Placements: 1, 2A, 2B, 3 or BN, 6, 7, 9C, SV, YL

Notes:

Belt length
1 ½" Braid overlay on yoke

\$4.00
\$7.00

INVENTORY ONLY



YOUTH STOCK PRACTICE JERSEY

S096BWK - 6B Cloth

\$14.00

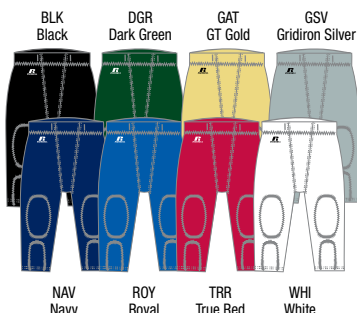
Sizes: M, XL

- Mini porthole mesh body.
- Medium weight dazzle warp knit sleeves and double ply yoke.
- 1" Crossover rib knit V-neck.
- Imported.

Decoration Placements: 1, 2A, 2B, 3, 6, 7, 9C, SV, YL

Notes: Decoration: Screen Print Only





YOUTH DELUXE GAME PANT

F2569WK - 69 Cloth **\$29.00**

87% Nylon / 13% Spandex-Colors
84% Polyester / 16% Spandex-White

Sizes: XS-2XL

- 69 Cloth offers durability and range of motion.
- 2" Elastic tunnel waist.
- Envelope Thigh and knee pad system holds pads firmly in place.
- Imported.

Options:

Slotted waist (10 slots)	\$6.00
1" Side braid	\$6.00
1 1/2" Side braid	\$6.50

Decoration Type: Embroidery, Twill

Decoration Placement: 18

Notes: Adult equivalent: **F2562MF**

YOUTH INTEGRATED 7 PIECE PAD PANT

F25PFWP - PF Cloth (No Fly)
100% Polyester Double Knit

\$27.00

Sizes: XS-2XL

- 7 piece integrated pad set includes:
- Ventilated hip and spine pads.
- Reinforced thigh pads.
- Contoured knee pads.
- 1" Web belt inserted and bar tacked.
- Imported.

Options: Not Available



YOUTH NO FLY PRACTICE PANT

F25PFWF - PF Cloth (Concealed slots) **\$17.00**

F25PFWS - PF Cloth (Half belt w/snaps) **\$13.00**

100% Polyester Double Knit

Sizes: XS-2XL

- Polyester double knit body.
- 2 1/2" Elastic tunnel waist with concealed slots.
- Envelope thigh and knee pad pockets.
- Imported.

Options:

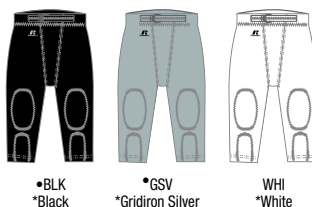
1" Side braid	\$6.00
1 1/2" Side braid	\$6.50

Decoration: Not available

Notes: Adult equivalent: **F25PFMF**

***INVENTORY ONLY ON THE F25PFWS - ALL COLORS**

***INVENTORY ONLY ON THE F25PFWF - BLACK & GRIDIRON SILVER** **\$12.00**



PRODUCT

**SCRIMMAGE VEST**

12756MH - 56 Cloth
100% Nylon Stretch Porthole Mesh

\$12.00

Sizes: One size fits all

- Vest body (56 Cloth).
- Trimmed neck, armhole and bottom.
- Imported.

Options:

Not Available

Decoration Placements:

6 (Numbers only), 7 (Numbers only)



PRODUCT

**MESH LAUNDRY BAG**

MLB6601 - 66 Cloth
100% Polyester Porthole Mesh

\$14.50

Sizes: 24"x36"

- Bag body (66 Cloth).
- Drawstring with lace lock.
- Imported.

Decoration Type:

Screen Print

Decoration Placements:

BG



PRODUCT

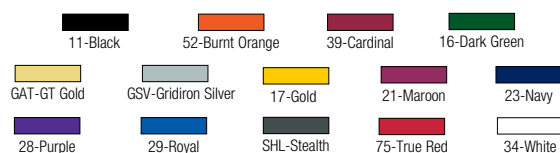
**1 1/2" COVERED BELT**

FBC73MK - 73 Cloth
100% Nylon Dazzle Warp Knit - Colors
100% Polyester Dazzle Warp Knit - White

\$9.00

Sizes: M, XL Oversize: 3XL

- Cloth covered web belt (73 Cloth).
- D-rings.
- Imported.



PRODUCT

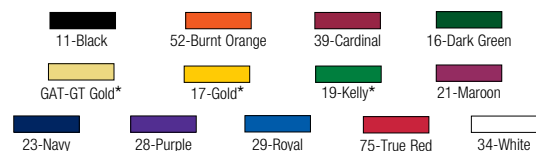
**STRAIGHT NAMEPLATE**

NMP73MK - 73 Cloth
100% Nylon Warp Knit - Colors
100% Polyester Warp Knit - White

\$8.50

Sizes: 4"x18"

- 73 Cloth.
- Crocheted.
- Single ply.
- Reinforced interfacing.
- Imported.



*Inventory only

CARBONTEK

GEN II

WITH



TM



BUILT FOR
POWER



DESIGNED FOR
SPEED



ENGINEERED FOR
PERFORMANCE



CARBONTEKSHOULDERPADS.COM

PATENT PENDING

1. STRONGER EXOSKELETON

The lightweight exoskeleton is constructed with 10 layers of 100% aerospace grade carbon fiber reducing the avg force felt by 60% compared to competing pads.

2. COMPRESSION VEST

Holds the padding close to the body for maximum range of motion and is machine washable. (Pictured with extended vest)

3. OS TECHNOLOGY

Automotive grade, dual density foam provides better impact mgmt and can be used without the exoskeleton for non-contact days.

4. MILITARY GRADE BUCKLE SYSTEM

Provides a secure fit without adding unnecessary bulk.

5. ENHANCED RANGE OF MOTION

The front exoskeleton is a seamless design that conforms to the body allowing for better tuck, stretch and lift.

6. IMPROVED PROTECTION

The entire exoskeleton is one cohesive piece for complete coverage and remains 20% lighter than competing pads.

CARBONTEK GEN II

X11PSCC - Full System	\$500
X00PVCC - OST Padded Vest	\$125
Adult Sizes: S-3XL	

STRONGER. LIGHTER. FASTER.



ADULT / YOUTH 5-PC INTEGRATED GIRDLE

RAIGR4 – Adult	CLR: GSV	\$34.50
RYIGR4 – Youth	CLR: GSV	\$32.50

83% Polyester / 17% Spandex

Adult Sizes: S-4XL Youth Sizes: S-XL

- Strategically placed protective padding in key contact areas including thighs, hips and tail bone.
- Lightweight, breathable, moisture-wicking fabric keeps you cool and dry.
- Cup pocket included.
- Plush RUSSELL waistband for comfort.
- Imported.

MEN'S ATHLETIC CUT GAME JERSEY

3B5VHMK - VH Cloth **\$45.00**

- 72% Nylon / 28% Spandex – Colors
- 72% Polyester / 28% Spandex – White

Sizes: S – XXL

- Moisture wicking fabric.
- Athletic cut jersey.
- V neck with piping.
- Piping at armholes and down side panels.
- Braid down center panel.
- Straight hemmed bottom.
- 4-side sew label on lower left front.
- "R Russell" logo on right chest.
- Imported.

Decoration Type: Screen Print, Twill, Embroidery

Decoration Placements: 3, 6, 7, BN

NOTES:

Stock short hook-up: 3B6VHMK

MEN'S ATHLETIC CUT SHORT

3B6VHMK – VH Cloth **\$45.00**

- 72% Nylon / 28% Spandex – Colors
- 72% Polyester / 28% Spandex – White

Sizes: S – XXL

- Moisture wicking fabric.
- Athletic cut short.
- 2" elastic with silicone and inserted drawcord.
- Piping on side panels.
- Braid down center of panel.
- 10" inseam.
- "R Russell" logo on left leg.
- Imported.

Decoration Type: Screen Print, Twill, Embroidery

Decoration Placements : 17, 18, 62, BU

NOTES:

Stock jersey hook-up: 3B5VHMK

Dri-POWER®



SIDE VIEW



BACK VIEW



ATHLETIC CUT



Conforms to NFHS
Uniform Design Specifications

* NFHS approval is for the base uniform design – It does not include lettering, numbering or other adornment.

COLORS



MEN'S GAME JERSEY

2B7DPMK – DP Cloth
- 100% Polyester

\$32.50

Dri-POWER®

Sizes: S – XXL

- Moisture wicking fabric.
- Mid-Fit Jersey.
- Contrasting arm and side inserts.
- Back panel inserts.
- Straight hemmed bottom.
- 4-side sew label on lower left front.
- Imported.

Decoration Type: Screen Print, Twill, Embroidery

Decoration Placements: 3, 6, 7, BN

NOTES:

Stock short hook-up: 2B8DPMK

MEN'S SHORT

2B8DPMK – DP Cloth
- 100% Polyester

\$32.50

Sizes: S – XXL

- Moisture wicking fabric.
- Athletic cut short.
- 2" multi-needle elastic waist with drawcord.
- Side and back leg panels.
- Side inserts.
- 10" inseam.
- "R Russell" logo on left hip.
- Imported.

Decoration Type: Screen Print, Twill, Embroidery

Decoration Placements : 17, 18

NOTES:

Stock jersey hook-up: 2B7DPMK



MID-FIT



Conforms to NFHS
Uniform Design Specifications

* NFHS approval is for the base uniform design – it does not include lettering, numbering or other adornment.

COLORS



BWH
Black/
White

CWH
Cardinal/
White

DWI
Dark Green/
White

MWH
Maroon/
White

NAW
Navy/
White

PWH
Purple/
White

ROW
Royal/
White

TRW
True Red/
White

WBK
White/
Black

WCA
White/
Cardinal

WDG
White/
Dark Green

WHM
White/
Maroon

WNA
White/
Navy

WPU
White/
Purple

WRO
White/
Royal

WTR
White/
True Red

WOMEN'S SEMI-RACERBACK GAME JERSEY**3B5VHXX** - VH Cloth**\$45.00**

72% Nylon / 28% Spandex – Colors

72% Polyester / 28% Spandex – White

Sizes: S – XXL

- Moisture wicking fabric.
- Semi-Racerback design jersey.
- V-neck with piping.
- Contrasting side panel.
- Piping at armholes and down side panels.
- Braid down center panel.
- Straight hemmed bottom.
- 4-side sew label on lower left front.
- Imported.

Decoration Type: Screen Print, Twill, Embroidery**Decoration Placements:** 3, 6, 7, 9, BN**NOTES:** Stock short hook-up: 3B6VHXX**WOMEN'S FULL COVERAGE STOCK SHORT****3B6VHXX** – VH Cloth**\$45.00**

72% Nylon / 28% Spandex – Colors

72% Polyester / 28% Spandex – White

Sizes: S – XXL

- Moisture wicking fabric.
- Full coverage cut short.
- 2" multi-needle waist with drawstring.
- Piping on side panels.
- Braid down center of panel.
- 8" inseam.
- "R Russell" logo on left leg.
- Imported.

Decoration Type: Screen Print, Twill, Embroidery**Decoration Placements:** 17, 18, 62, BU**NOTES:** Stock jersey hook-up: 3B5VHXX

SIDE VIEW



BACK VIEW



Conforms to NFHS
Uniform Design Specifications

* NFHS approval is for the base uniform design – it does not include lettering, numbering or other adornment.

COLORS

WOMEN'S FULL COVERAGE GAME JERSEY

2B7DPXK – DP Cloth
100% Polyester

\$32.50

Sizes: S – XXL

- Moisture wicking fabric.
- Full coverage jersey.
- Self-material faced V- neck.
- Contrasting arm and side inserts.
- Back panel inserts.
- Straight hemmed bottom.
- 4-side sew label on lower left front.
- Imported.

Decoration Type: Screen Print, Twill, Embroidery

Decoration Placements: 6, 7, BN

NOTES: Stock short hook-up 2B8DPXK

WOMEN'S PANEL STOCK SHORT

2B8DPXK – DP Fabric
100% Polyester

\$32.50

Sizes: S-XXL

- Moisture wicking fabric.
- 2" multi-needle waist with drawstring.
- Full coverage cut.
- Side panel with insert.
- Upper back insert.
- Cover seam rises.
- Straight hemmed bottom.
- 8" standard inseam.
- Imported.

Decoration Type: Screen Print, Twill, Embroidery

Decoration Placements: 17, 18, 62, BU

NOTES:

Stock jersey hook-up: 2B7DPXK

10% upcharge for 3XL; 20% upcharge for 4XL



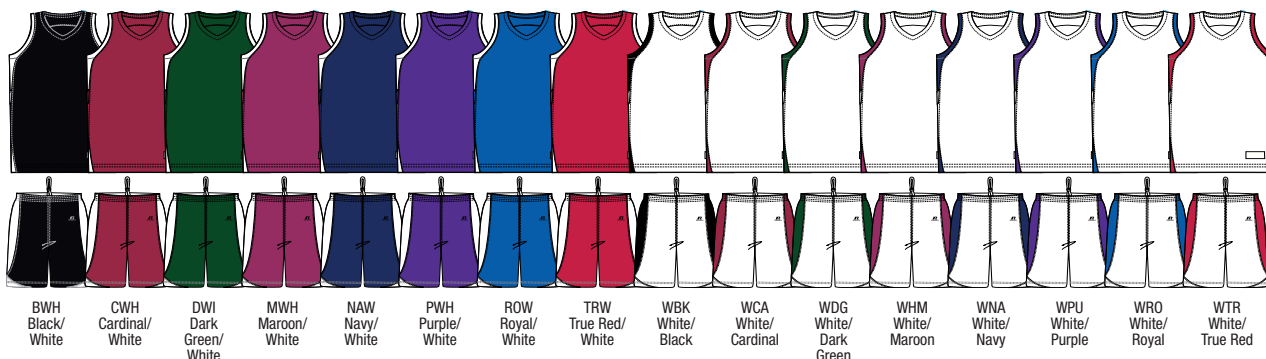
Conforms to NFHS
Uniform Design Specifications



FULL COVERAGE

* NFHS approval is for the base uniform design – it does not include lettering, numbering or other adornment.

COLORS



REVERSIBLE PRACTICE JERSEY

7M2AFMK – Men's AF Cloth

\$17.00

7M2AFBK – Youth AF Cloth

\$15.00

100% Nylon – Colors

100% Polyester – White

Sizes: Adult: S – XXL Youth: S – XL

- Concealed U-neck and armholes.
- Reverses to white.
- Opened bottom to allow for printing.
- Straight hemmed bottom.
- 4-side sew label on lower left front.
- Imported.

Decoration Type: Screen Print

Decoration Placements: 3, 6, 7, 8, 9, BN

Reverse Side - 3R, 6R, 7R, 8R, RZ



WOMEN'S REVERSIBLE PRACTICE JERSEY

7W2AFXK - AF Cloth
100% Nylon – Colors
100% Polyester – White

\$17.00

Sizes: S – XXL

- Concealed V-neck and armholes.
- Reverses to white.
- Opened bottom to allow for printing.
- Straight hemmed bottom.
- Imported.

Decoration Type: Screen Print

Decoration Placements: 6, 7, 8, BN
Reverse Side - 6R, 7R, 34, 84, RZ



BWH
Black/
White

CWH
Cardinal/
White

DW
Dark Green/
White

MWH
Maroon/
White

NWH
Navy/
White

PWH
Purple/
White

ROW
Royal/
White

TRW
True Red/
White

MEN'S 9" POLYESTER TRICOT MESH SHORT

659AFMK - AF Cloth (Adult) \$13.50
 659AFB0 - AF Cloth (Youth) \$13.00
 100% Polyester Tricot Mesh

Adult Sizes: S-XXL Oversize: 3XL-4XL
 Youth Sizes: S-XL

- Team Athletic Cut.
- Solid tricot lined body.
- Two-needle hemmed leg openings.
- 9" inseam adult.
- 7" inseam youth.
- "R RUSSELL" on upper right hip.
- Imported.

Decoration Type:

Screen Print, Embroidery

Decoration Placements:

17, 18

Notes:

White offered in S-XXL only



Dri-POWER®



Dri-POWER®

7" TRICOT MESH SHORT

7M7AFMK - AF Cloth \$13.00
 100% Polyester

Sizes: S-XXL Oversize: 3XL

- Multi-needle waist with quickcord.
- Lightweight tricot liner.
- Straight hemmed bottom.
- 7" inseam.
- "R RUSSELL" logo on upper right hip.
- Imported.

Decoration Type:

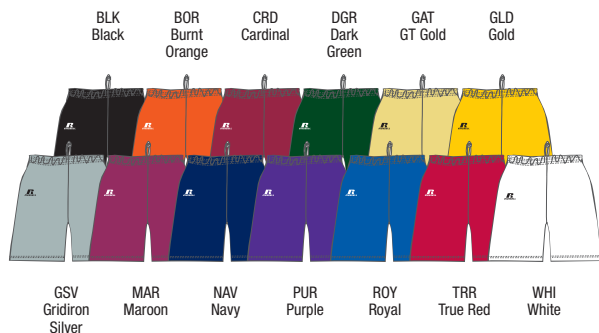
Screen Print, Embroidery, Twill

Decoration Placements:

17, 18

Notes:

9" inseam - 659AFMK





NEW

SHORTSLEEVE VOLLEYBALL JERSEY

1V5X2XK - X2 Cloth
100% Polyester

\$25.00

Sizes: XS-XXL

- Lightweight stretch fabric delivers comfort and durability.
- Set-in sleeves for max range of motion.
- Upper back and side mesh inserts keep the player cool and dry.
- Contrast white piping for a clean, professional look.
- Round Neck for style.

Decoration Type:
Screen Print

Decoration Available:
6, 7, 8V, (3 or BN)

Notes:

Tight Hook-up, 2V372XK (3" inseam)
Tight Hook-up, 2V572XK (5" inseam)



LONGSLEEVE VOLLEYBALL JERSEY

NEW

1V6X2XK - X2 Cloth
100% Polyester

\$30.00

Sizes: XS-XXL

- Lightweight stretch fabric delivers comfort and durability.
- Set-in sleeves for max range of motion.
- Upper back and side mesh inserts keep the player cool and dry.
- Contrast white piping for a clean, professional look.
- Round Neck for style.

Decoration Type:
Screen Print

Decoration Available:
6, 7, 8V, (3 or BN), 32, 25

Notes:

Tight Hook-up, 2V372XK (3" inseam)
Tight Hook-up, 2V572XK (5" inseam)





BLK Black CRD Cardinal DGR Dark Green GSV Gridiron Silver



MAR Maroon NAV Navy PUR Purple



ROY Royal TRR True Red WHI White

WOMEN'S STOCK VOLLEYBALL CAP SLEEVE V-NECK TEE

7P8S2XK - S2 Cloth (Adult)

\$22.00

94% Nylon / 6% Spandex Stretch Knit – Colors

91% Polyester / 9% Spandex Stretch Knit – White

Sizes: XS-XXL

- Moisture wicking fabric.
- Self-material V-neck.
- Compression body and sleeve.
- Flat-lock seamed construction reduces abrasion.
- Two-needle cover stitch hemmed sleeves and bottom.
- "R RUSSELL" on right upper front chest.
- "R RUSSELL" jock tag lower left front.
- Imported.

Decoration Type:

Screen Print

Decoration Placements:

6, 7, 8, (3 or BN)

LOW RISE TIGHT

2V372XK - 72 Cloth (3" inseam)

2V572XK - 72 Cloth (5" inseam)

90% Nylon / 10% Spandex - Colors

Sizes: XS-XXL

- Low rise design.
- 1" flat elastic waistband.
- New back seam for comfort fit.
- Gusset with lining.
- 3 or 5" finished inseam.
- "R Russell" logo at lower right front .

Decoration Placements:

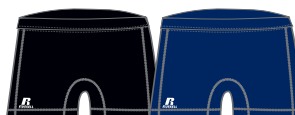
N/A

\$23.50

\$27.00



Back View



BLK Black

NAV Navy

LOW RISE TIGHT

2V572XK - 72 Cloth (5" inseam)

\$27.00

90% Nylon / 10% Spandex - Colors

90% Polyester / 10% Spandex - White

Sizes: XS-XXL

- Low rise design.
- 1" flat elastic waistband.
- Back seam for comfort fit.
- Gusset with lining.
- 5" finished inseam.
- "R Russell" logo at lower right front .

Decoration Placements:

N/A



Back View



BLK Black

NAV Navy



CAP SLEEVE STOCK VOLLEYBALL JERSEY

2V4DPXK - DP Cloth
100% Polyester

CLOSEOUT \$11.00

Sizes: XS-XXL

- Tight fit construction.
- Raglan cap sleeves.
- Hem drop tail bottom opening.
- Contrasting sleeves and front/back inserts.

NO DECORATION AVAILABLE:

Notes:

Tight Hook-up, 2V372XK (3" inseam)

Tight Hook-up, 2V572XK (5" inseam)



BWH Black/White CWH Cardinal/White NWH Navy/White PWH Purple/White TRW True Red/White

LONG SLEEVE STOCK VOLLEYBALL JERSEY

3V6S2XK - S2 Cloth

CLOSEOUT \$36.00

94% Nylon / 6% Spandex - Colors

91% Polyester / 9% Spandex - White

Sizes: XS-XXL

- Tight fit construction.
- Y neck design with piping.
- Contrasting fabric V2 back and sleeve.
- Set-in long sleeve with hem.
- Contrasting side piping wraps front to back.

Decoration Type:

Screen Print

Decoration Placements:

6, 7, 8V (logo only), 32, 35 (3 or BN)

Notes:

Tight Hook-up, 2V372XK (3" inseam)

Tight Hook-up, 2V572XK (5" inseam)



BWH Black/White CWH Cardinal/White DWH Dark Green/White MWH Maroon/White NWH Navy/White



PWH Purple/White ROW Royal/White TRW True Red/White WWW White/White

DECORATION COLOR GUIDE

	Air Force Blue	Aqua	Baseball Grey	Black	Blazer Gold	Burnt Orange	Cardinal	Columbia Blue	Dark Green	Diamond Pink	Eagle Grey	Football Silver	Gold	GT Gold	Grid Iron Silver	Kelly	Light Blue	Light Old Gold	Light Orange	Marlin Aqua	Maroon	Metallic Gold	Metallic Silver	Navy	Old Gold	Purple	Royal	Seal Brown	Soul Blue	Stealth	Texas Orange	True Red	Vegas Gold	White
Russcote																	N/A																	
Pro Twill	N/A				N/A					N/A	N/A	N/A					N/A	N/A	N/A		N/A	N/A		N/A				N/A					N/A	
Emb.																			N/A					N/A										

SIZE CHARTS

MEN'S SIZE CHART

Alpha Size	X-Small	Small	Medium	Large	1X-Large	2X-Large	3X-Large	4X-Large	5X-Large
Chest	30 - 32	34 - 36	38 - 40	42 - 44	46 - 48	50 - 52	54 - 56	58 - 60	62 - 64
Waist	24 - 26	28 - 30	32 - 34	36 - 38	40 - 42	44 - 46	48 - 50	52 - 54	56 - 58

MEN'S TALL SIZE CHART

	LT	XLT	2XT	3XT
Chest	42 - 44	46 - 48	50 - 52	54 - 56
Waist	36 - 38	40 - 42	44 - 46	48 - 50

YOUTH SIZE CHART

Alpha Size	X-Small	Small	Medium	Large	1X-Large	2X-Large
Chest	24 1/2 - 26	26 1/2 - 28	28 1/2 - 30	30 1/2 - 33	33 1/2 - 36	36 1/2 - 39
Waist	20 1/2 - 22	22 1/2 - 24	24 1/2 - 26	26 1/2 - 29	29 1/2 - 32	32 1/2 - 35

WOMEN'S SIZE CHART

Alpha Size	X-Small	Small	Medium	Large	1X-Large	2X-Large	3X-Large	4X-Large	5X-Large
Bust	31 1/2 - 33	33 1/2 - 35	35 1/2 - 37	37 1/2 - 40	40 1/2 - 43	43 1/2 - 46	46 1/2 - 50	50 1/2 - 54	54 1/2 - 58
Waist	23 1/2 - 25	25 1/2 - 27	27 1/2 - 29	29 1/2 - 32	32 1/2 - 35	35 1/2 - 38	38 1/2 - 42	42 1/2 - 46	46 1/2 - 50
Hips	33 1/2 - 35	35 1/2 - 37	37 1/2 - 39	39 1/2 - 42	42 1/2 - 45	45 1/2 - 48	48 1/2 - 52	52 1/2 - 56	56 1/2 - 60

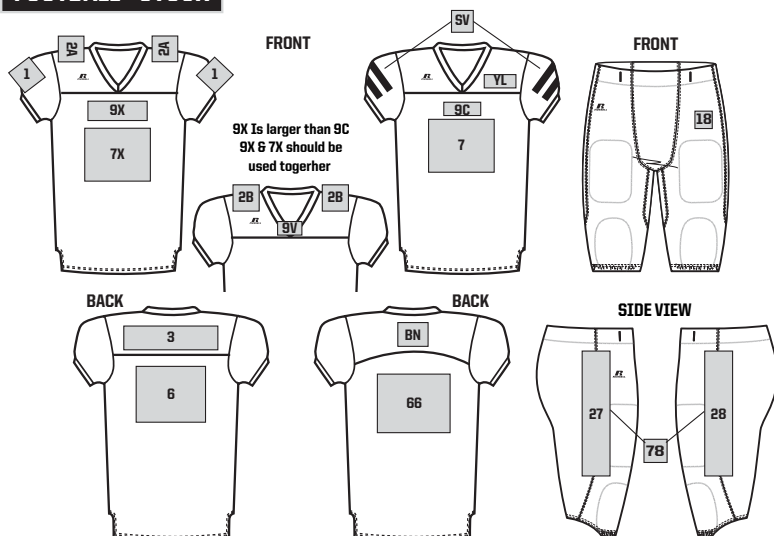
GIRL'S SIZE CHART

Alpha Size	S (7-8)	M (10-12)	L (14-16)	XL (18)
Bust	25 1/2 - 27 1/2	28 - 30 1/2	31 - 33 1/2	34-35
Waist	22 1/2 - 23 1/2	24 - 25 1/2	26 - 27 1/2	28 - 28 1/2
Hips	27 1/2 - 29	29 1/2 - 32 1/2	33 - 36 1/2	37 - 38 1/2

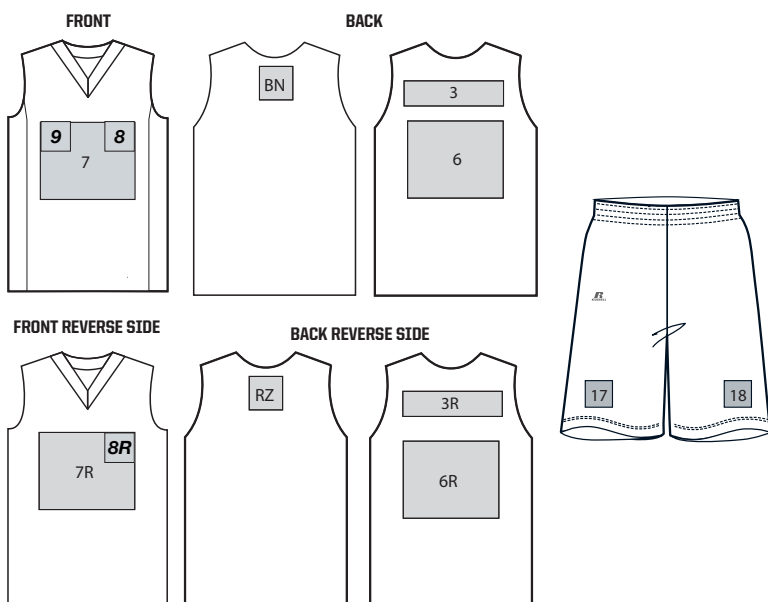
NOTE: The measurements listed in the above charts are body measurements. Any person on the upper limits of these measurements should consider ordering the next size. Inseam measurements should always be specified on warmup pant orders. When no specific measurements are listed or the term AVERAGE INSEAMS is written, you will receive inseam lengths as listed on the charts above.

SPORT SPECIFIC TEAM PLACEMENTS - TOPS

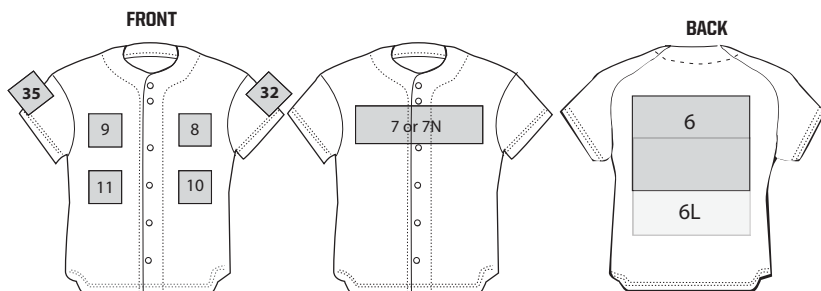
FOOTBALL - STOCK



BASKETBALL/VOLLEYBALL-STOCK



BASEBALL/SOFTBALL-STOCK



JERSEY PLACEMENTS

1	Both RIGHT & LEFT Sleeves (2" up from hem)
3	UPPER BACK OR YOKE
6	FULL BACK
66	BACK 6" DOWN FROM INSERT SEAM (Used for styles with curved yokes)
7	FULL FRONT
8	LEFT CHEST (Centered left/right between neck trim and armhole trim)
9	RIGHT CHEST (Centered left/right between neck trim and armhole seam)
10	LEFT FRONT MIDDLE
11	RIGHT FRONT MIDDLE
32	LEFT SLEEVE
35	RIGHT SLEEVE
2A	TOP OF RIGHT & LEFT SHOULDERS FACING SLEEVES (centered between neck & shoulder seams)
2B	TOP OF RIGHT & LEFT SHOULDERS FACING FRONT (centered between neck & shoulder seams)
3R	UPPER BACK OR YOKE REVERSE (Same as PL#3 on reverse side of jersey)
6L	BACK NUMBERS ONLY (9" down from neck) USED WHEN CUSTOMER WILL APPLY NAMEPLATES
6R	FULL BACK REVERSE (Same as PL#6 on reverse side of jersey)
9C	TOP CENTER FRONT (Center design on left/right on front of garment from bottom of neck seam)
7N	FAUX FRONT JERSEY (No split artwork)
7R	FULL FRONT REVERSE (Same as PL#7 on reverse side of jersey)
7X	FULL FRONT NUMBERS *ONLY USE WITH PL# 9X
8R	LEFT CHEST REVERSE (Same as PL#8 on reverse side of jersey)
9C	TOP CENTER FRONT (Center design on left/right on front of garment from bottom of neck seam)
9X	TOP CENTER FRONT LARGER (Center design on left/right on front of garment from bottom of v-neck) *ONLY USE WITH PL# 7X
9V	V-PATCH (Center on v-neck)
BN	CENTER TOP BACK NECK
NP	NAMEPLATE
RZ	CENTER TOP BACK NECK REVERSE (Same as PL#BN on reverse side of jersey)
SV	SLEEVE STRIPES
YL	LEFT YOKE

PANT PLACEMENTS

17	RIGHT FRONT LEG
18	LEFT FRONT LEG
27	RIGHT SIDE PANEL (Centered left/right & top/bottom in side panel)
28	LEFT SIDE PANEL (Centered left/right & top/bottom in side panel)
78	USE WHEN BOTH PL# 27 & 28 ARE USED (Centered left/right & top/bottom in panel)

TEAMWEAR PLACEMENTS - TOPS

TRAINING, FLEECE & SIDELINE

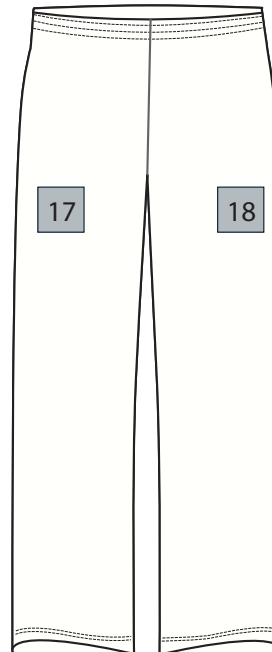
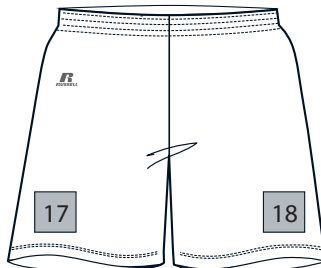
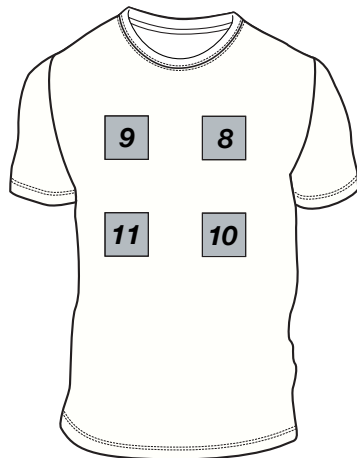
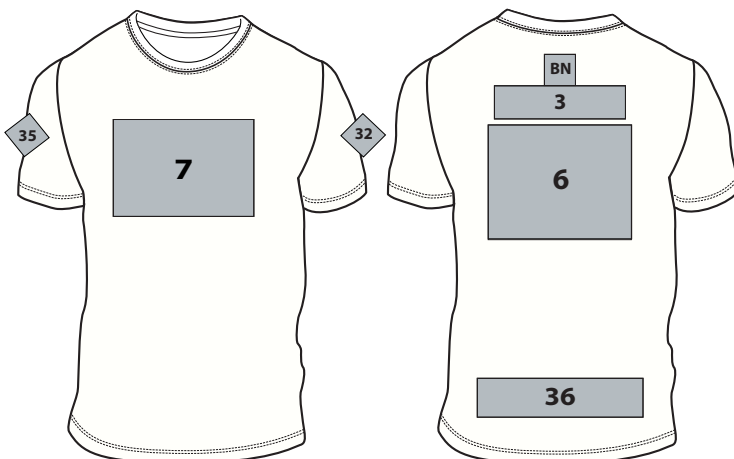
HOW TO ORDER:

STEP1: PICK STYLE/COLOR/SIZE

STEP2: PICK PLACEMENT

STEP3: PICK DECORATION TYPE

STEP4: PICK YOUR LAYOUT



TOP PLACEMENTS

3	UPPER BACK OR YOKE
6	FULL BACK
7	FULL FRONT
8	LEFT CHEST (Centered left/right between neck & shoulder seams)
9	RIGHT CHEST (Centered left/right between neck & shoulder seams)
10	LEFT FRONT MIDDLE
11	RIGHT FRONT MIDDLE
32	LEFT SLEEVE
35	RIGHT SLEEVE
36	LOWER BACK (2" above hem or waistband seam)
BN	CENTER TOP BACK NECK

BOTTOM PLACEMENTS

17	RIGHT FRONT LEG
18	LEFT FRONT LEG

NOTES:

- * Must choose placement BN OR 3, cannot be combined
- * Placements 7, 8, & 9 cannot be used all together
- * Available decoration placements noted on each style

STANDARD LAYOUT DESIGN



SCREEN PRINT ONLY

When ordering, please specify appropriate Layout number as well as size and placement of decoration.

NOTE: 3M FONTS CANNOT CHANGE (AS SHOWN)

NUMBER & LETTERING FONTS

FULL BLOCK

ABCDEFGHIJKLMNOPQRSTUVWXYZ
0123456789

STINGER

ABCDEFGHIJKLMNOPQRSTUVWXYZ
0123456789

MONOLITH

ABCDEFGHIJKLMNOPQRSTUVWXYZ
0123456789

STEEL

ABCDEFGHIJKLMNOPQRSTUVWXYZ
0123456789

JET

ABCDEFGHIJKLMNOPQRSTUVWXYZ
0123456789

ROCK

ABCDEFGHIJKLMNOPQRSTUVWXYZ
0123456789

TIMES BOLD

ABCDEFGHIJKLMNOPQRSTUVWXYZ
0123456789

PRO BLOCK

ABCDEFGHIJKLMNOPQRSTUVWXYZ
0123456789

VIPER

ABCDEFGHIJKLMNOPQRSTUVWXYZ
0123456789

ATHLETIC SHADOW

ABCDEFGHIJKLMNOPQRSTUVWXYZ
0123456789

PLAIN BLOCK

ABCDEFGHIJKLMNOPQRSTUVWXYZ
0123456789

SCRIPT

Aa Bb Cc Dd Ee Ff Gg Hh Ii Jj Kk Ll Mm
Nn Oo Pp Qq Rr Ss Tt Uu Vv Ww Xx Yy Zz

FONT DECORATION OPTIONS

	RUSSTWILL	SCREEN PRINT	SUBLIMATION	TWILL	EMBROIDERY	PLAYER NAMES
FULL BLOCK	X	X	X	X	X	X
STINGER	X	X	X	X	X	X
MONOLITH	X	X	X	X	X	X
STEEL	X	X	X	X	X	
JET	X	X	X	X	X	
ROCK		X	X	X	X	X
TIMES BOLD		X	X	X	X	X
PRO BLOCK		X	X	X		
VIPER		X	X			
ATHLETIC SHADOW		X	X	X		
PLAIN BLOCK		X	X	X	X	X
SCRIPT		X	X	X	X	

RUSSTWILL

	FULL BLOCK	STINGER	MONOLITH	STEEL	JET
BASE (1C)	TEAM 23	TEAM 23	TEAM 23	TEAM 23	TEAM 23
TRADITIONAL (2C)	TEAM 45	TEAM 45	TEAM 45	TEAM 45	TEAM 45
CLASSIC (3C)	TEAM 67	N/A	N/A	N/A	N/A

NOTE: LETTERS NOT AVAILABLE

PRICING

EMBROIDERY

STANDARD TEAM NAME: \$8.00

CUSTOM MASCOTS, LOGOS or LETTERING

SIZE	6 - 11	12 - 47	48 - 83	84 - 119	120 & UP	DIGITIZING
1" x 1"	\$13.80	\$8.20	\$6.30	\$5.60	\$4.00	\$80.00
2" x 2"	\$17.30	\$9.40	\$8.10	\$6.60	\$5.60	\$130.00
3" x 3"	\$20.80	\$11.90	\$11.10	\$9.40	\$8.10	\$170.00
4" x 4"	\$25.20	\$14.50	\$13.30	\$12.70	\$11.10	\$220.00

- No digitizing charge for standard team names (Placements 9c and 9x)
- Prices are based on size of designs, not number of colors.
- Prices per garment, per location.
- All new designs require a digitizing charge based on stitch count
- Existing art charge \$20 (No digitizing charge)

SCREEN PRINT

STANDARD TEAM NAME & LOGOS

COLOR	1	2-5	6 - 11	12 - 47	48 - 119	120 - 287	288 - 599	600 & UP
1C	\$17.00	\$12.00	6.50	\$4.70	\$3.70	\$2.30	\$1.90	\$1.70
2C	\$23.30	\$17.00	\$10.10	\$7.20	\$4.70	\$3.10	\$2.60	\$2.40
3C	\$32.00	\$23.50	\$12.10	\$8.70	\$6.20	\$4.00	\$3.60	\$3.10
4C, 5C, 6C	\$34.00	\$25.50	\$14.20	\$11.20	\$7.20	\$6.10	\$5.70	\$5.90

- Prices are based on quantity of items to be decorated.
- New artwork requires pattern charge of \$45 per color.

SLEEVE STRIPES

COLOR	1	2-5	6 - 11	12 - 47	48 - 119	120 & UP
1C	\$22.50	\$15.90	\$9.50	\$7.20	\$6.20	\$6.50
2C	\$29.50	\$20.00	\$13.70	\$9.20	\$8.20	\$8.50
3C	\$37.00	\$25.50	\$19.50	\$10.60	\$9.20	\$9.50

- \$20 Pattern Charge per screen will be applied for on hand art.
- No pattern charge for standard mascot & sport designs which reference a valid screen number.
- Application Charge + Pattern Charge = Screen Print Price
- Player Nameplate Extra

NUMBERS

COLOR	1	2-5	6 - 11	12 - 47	48 - 119	120 & UP
1C	\$17.50	\$11.00	\$7.00	\$5.00	\$3.40	\$3.50
2C	\$19.50	\$15.50	\$11.00	\$7.80	\$6.20	\$6.40

PLAYER NAMES

APPLICATION	1C	2C
JERSEY DIRECT OR NAMEPLATE	\$9.50	\$19.50

RUSSTWILL

ALL NUMBER STYLES (LETTERING NOT AVAILABLE)

NUMBERS	4"	6"	8"	10"	12"
PER DIGIT	\$5.40	\$5.80	\$7.60	\$8.20	\$9.00

- Prices are per digit, not per number.
- EXAMPLE: 4" number 13 = \$10.80

PRO TWILL

LETTERING

COLOR	1" - 5"	6" & 8"
1C	\$4.20	\$8.40
2C	\$7.10	\$12.60
3C	\$10.70	\$18.90

NUMBERS

COLOR	2" - 4"	5" - 6"	8" - 10"	12"
1C	\$4.30	\$4.60	\$6.70	\$7.50
2C	\$6.90	\$7.50	\$9.20	\$10.00
3C	\$10.30	\$11.50	\$17.80	\$19.60

- Prices are per letter.
- New artwork requires pattern charge of \$45 per color.
- \$20 pattern charge for existing artwork.

PLAYER NAMES

APPLICATION	1C	2C
JERSEY DIRECT	\$17.35	\$26.25
NAMEPLATE	\$22.05	\$29.95

- Application Charge + Pattern Charge = Twill Price.
- Player Nameplate Extra.
- Player names limited to 12 letters per nameplate.

STANDARD SLEEVE STRIPE PATTERNS



1/2"
1 1/2"
1/2"

Stripe #1 + 1A 1/c
1/2" spacing
(3 1/2" sleeve
stripe height)



1"
1"

Stripe #2 + 2A 1/c
1" spacing
(3" sleeve
stripe height)



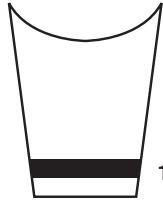
1"
1"
1"

Stripe #3 + 3A 1/c
1/2" spacing
(4" sleeve
stripe height)



1/4"
1 1/8"
1/4"
1 1/8"
1/4"

Stripe #10 + 10A 1/c
5/16" spacing
available in 1 or 2 color
(4" sleeve stripe height)



1"

Stripe #203
(1" sleeve stripe height)



1/2"
1/2"

Stripe #11 + 11A 1/c
1/2" spacing, one color
stripes only
(1 1/2" sleeve stripe height)



5/8"
3/8"
1 1/8"
3/8"
5/8"

Stripe #12 + 12A 1/c
7/32" spacing
1 or 2 color stripes
(4" sleeve stripe height)



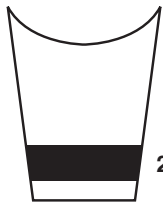
2"
2"

Stripe #13
No spacing
(4" sleeve stripe height)



1/4"
1"
1/4"
1/4"
1"
1/4"

Stripe #24
2 sets of stripes with 1"
space between sets
(4" sleeve stripe height)



2"

Stripe #204
(2" sleeve stripe height)



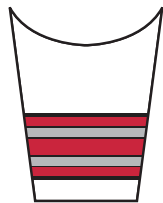
1"
1"
1"

Stripe #200
No spacing
(3" sleeve stripe height)



1/2"
2"
1/2"

Stripe #201
No spacing
(3" sleeve stripe height)



outer stripes = 1/8"
center stripe = 1"
dividing stripes = 1/8"
other stripes = 1/2"

Stripe #202
No spacing
(4" sleeve stripe height)







1"
1/2"
1"

Stripe #205
1/4" Show thru spacing
(3" sleeve stripe height)

NO PATTERN CHARGE for standard sleeve stripe patterns shown above (no charges to art).

Half Track Sleeve Stripes for Stock Jerseys



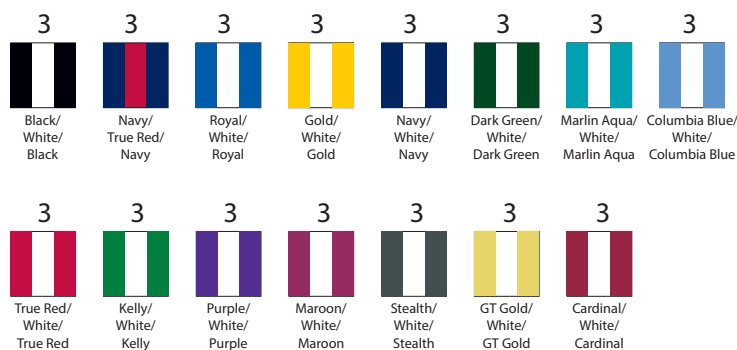
	1st color		3rd color
	2nd color		sleeve

Half Track

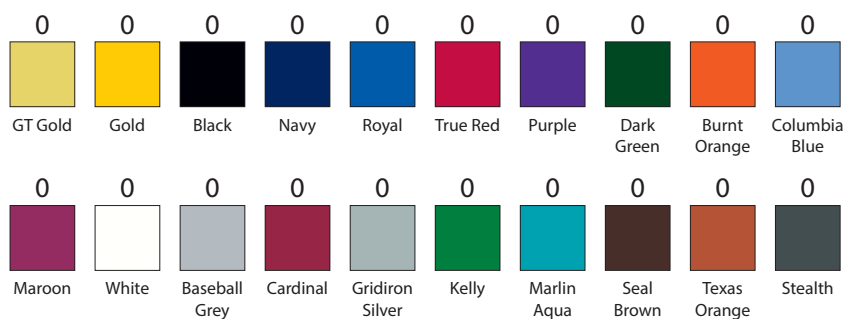
Abbreviated stripes centered on sleeves from right to left and positioned vertically as our regular stripes. When ordering, specify "Half Track Sleeve Stripes" 6.5" wide and pattern number from above.

STOCK BRAID/TRIM

1" AND 1/2" 102 BRAID PATTERN



1" AND 1/2" 102 BRAID PATTERN



1/8" AND 1/2" 106 BRAID PATTERN



FABRICS OFFERED

Fabric Color Guide: Offered



Track/Cross Country



Football



Volleyball



Soccer



Baseball / Softball



Basketball

Fabric #	Aqua	Baseball Grey	Black	Burnt Orange	Cardinal	Columbia Blue	Dark Green	Giants Cream	Gold	Grid Iron Silver	GT Gold	Kelly	Light Old Gold	Maroon	Navy	Purple	Royal	Seal Brown	Stealth	Steel	Texas Orange	True Red	White	Total # of colors	Sport
6B	N/A	N/A	N/A			N/A	N/A	N/A	N/A	N/A	N/A	N/A	N/A	N/A	N/A	N/A	N/A	N/A	N/A	N/A	N/A	N/A	N/A	12	
47	N/A		N/A			N/A	N/A	N/A	N/A	N/A	N/A	N/A	N/A	N/A	N/A	N/A	N/A	N/A	N/A	N/A	N/A	N/A	N/A	12	
56	N/A	N/A				N/A	N/A	N/A	N/A	N/A	N/A	N/A	N/A	N/A	N/A	N/A	N/A	N/A	N/A	N/A	N/A	N/A	N/A	6	
62	N/A	N/A				N/A	N/A	N/A	N/A	N/A	N/A	N/A	N/A	N/A	N/A	N/A	N/A	N/A	N/A	N/A	N/A	N/A	N/A	20	
69	N/A	N/A				N/A	N/A	N/A	N/A	N/A	N/A	N/A	N/A	N/A	N/A	N/A	N/A	N/A	N/A	N/A	N/A	N/A	N/A	16	
72	N/A					N/A	N/A	N/A	N/A	N/A	N/A	N/A	N/A	N/A	N/A	N/A	N/A	N/A	N/A	N/A	N/A	N/A	N/A	16	
73	N/A					N/A	N/A	N/A	N/A	N/A	N/A	N/A	N/A	N/A	N/A	N/A	N/A	N/A	N/A	N/A	N/A	N/A	N/A	19	
93	N/A	N/A				N/A	N/A	N/A	N/A	N/A	N/A	N/A	N/A	N/A	N/A	N/A	N/A	N/A	N/A	N/A	N/A	N/A	N/A	17	
AH	N/A	N/A				N/A	N/A	N/A	N/A	N/A	N/A	N/A	N/A	N/A	N/A	N/A	N/A	N/A	N/A	N/A	N/A	N/A	N/A	17	
AZ	N/A	N/A				N/A	N/A	N/A	N/A	N/A	N/A	N/A	N/A	N/A	N/A	N/A	N/A	N/A	N/A	N/A	N/A	N/A	N/A	17	
DP2	N/A	N/A		N/A		N/A	N/A	N/A	N/A	N/A	N/A	N/A	N/A	N/A	N/A	N/A	N/A	N/A	N/A	N/A	N/A	N/A	N/A	11	
HP	N/A	N/A				N/A	N/A	N/A	N/A	N/A	N/A	N/A	N/A	N/A	N/A	N/A	N/A	N/A	N/A	N/A	N/A	N/A	N/A	12	
LG	N/A					N/A	N/A	N/A	N/A	N/A	N/A	N/A	N/A	N/A	N/A	N/A	N/A	N/A	N/A	N/A	N/A	N/A	N/A	17	
QL	N/A	N/A				N/A	N/A	N/A	N/A	N/A	N/A	N/A	N/A	N/A	N/A	N/A	N/A	N/A	N/A	N/A	N/A	N/A	N/A	17	
RQ	N/A					N/A	N/A	N/A	N/A	N/A	N/A	N/A	N/A	N/A	N/A	N/A	N/A	N/A	N/A	N/A	N/A	N/A	N/A	17	Coaches/Sideline
RT	N/A					N/A	N/A	N/A	N/A	N/A	N/A	N/A	N/A	N/A	N/A	N/A	N/A	N/A	N/A	N/A	N/A	N/A	N/A	17	Coaches/Sideline
S2	N/A	N/A		N/A		N/A	N/A	N/A	N/A	N/A	N/A	N/A	N/A	N/A	N/A	N/A	N/A	N/A	N/A	N/A	N/A	N/A	N/A	11	
SM	N/A	N/A				N/A	N/A	N/A	N/A	N/A	N/A	N/A	N/A	N/A	N/A	N/A	N/A	N/A	N/A	N/A	N/A	N/A	N/A	18	
V2	N/A	N/A		N/A		N/A	N/A	N/A	N/A	N/A	N/A	N/A	N/A	N/A	N/A	N/A	N/A	N/A	N/A	N/A	N/A	N/A	N/A	9	
VH	N/A	N/A				N/A	N/A	N/A	N/A	N/A	N/A	N/A	N/A	N/A	N/A	N/A	N/A	N/A	N/A	N/A	N/A	N/A	N/A	15	
VT	N/A					N/A	N/A	N/A	N/A	N/A	N/A	N/A	N/A	N/A	N/A	N/A	N/A	N/A	N/A	N/A	N/A	N/A	N/A	16	
XC	N/A	N/A				N/A	N/A	N/A	N/A	N/A	N/A	N/A	N/A	N/A	N/A	N/A	N/A	N/A	N/A	N/A	N/A	N/A	N/A	20	
XP	N/A					N/A	N/A	N/A	N/A	N/A	N/A	N/A	N/A	N/A	N/A	N/A	N/A	N/A	N/A	N/A	N/A	N/A	N/A	20	
Z7	N/A					N/A	N/A	N/A	N/A	N/A	N/A	N/A	N/A	N/A	N/A	N/A	N/A	N/A	N/A	N/A	N/A	N/A	N/A	19	

53 CLOTH COLORS: Grey w/Black (GBZ), Grey w/Navy (GNZ), Grey w/Purple (GPZ), Grey w/Royal (GEZ), Grey w/Dark Green (GDZ), White w/Black (WBZ), White w/Dark Green (WDZ), White w/Maroon (WOZ), White w/Navy (WNZ), White w/Purple (WPZ), White w/Royal (WRZ), White w/True Red (WZZ)

Sublimated Fabric #	Aqua	Baseball Grey	Black	Blazer Gold	Burnt Orange	Cardinal	Columbia Blue	Dark Green	Diamond Pink	Giants Cream	Gold	Grid Iron Silver	GT Gold	Kelly	Light Old Gold	Light Orange	Maroon	Navy	Purple	Royal	Seal Brown	Soul Blue	Stealth	Texas Orange	True Red	White	Army Camo Green	Army Camo Grey	Army Camo Tan	Watermelon Pink	Electric Green	Lavender Haze	Laser Yellow	Techno Green
62S																																		
69S																																		
72S																																		
73S																																		
93S																																		
AHS																																		
AZS																																		
BN																																		
DPS																																		
JA																																		
S2S																																		
V2S																																		
VHS																																		
VTs																																		
XCS																																		
XPS																																		

FABRICS OFFERED

Fabric Description	
Fabric #	Description
6B	Porthole Mesh. 100% Bright Polyester-Colors & White 5.6 oz/sq yd.
47	Heavyweight Stretch Double Knit. 100% Nylon-Whites & Colors 8.8 oz/sq yd.
53	Engineered Pinstripe Warp Knit. 100% Polyester. 8.0 oz/sq yd.
56	Porthole Mesh. 100% Nylon. 3.1 oz/sq yd.
62	Stretch Warp Knit. 92% Nylon/8% Spandex-Colors, 92% Polyester/8% Spandex-White. 8.5 oz/sq yd.
69	Stretch Warp Knit. 87% Nylon/13% Spandex- Colors, 84% Polyester/16% Spandex-Whites. 6.5 oz/sq yd.
72	Dri-Power Stretch Jersey. 90% Nylon/10% Spandex-Colors, 7.2 oz/sq yd. 91% Polyester/9% Spandex-Whites, 7.2 oz/sq yd.
73	Bright Dazzle Warp Knit. 100% Nylon-Colors, 100% Polyester-Whites, 7.0 oz/sq yd.
93	Bright Medium Weight Tricot Mesh. 100% Nylon-Colors, 100% Polyester, 5.5 oz/sq yd.
AH	Bright Medium Weight Tricot Mesh. 100% Nylon-Colors, 100% Polyester, 3.9 oz/sq yd.
AZ	Bright Dazzle Warp Knit. 100% Nylon-Colors, 100% Polyester-Whites, 4.4 oz/sq yd.
BN	Flat Back Mesh Interlock. 100% Polyester, 7.1 oz/sq yd.
DP	Dri-Power™ Bird Eye Mesh. 100% Polyester-Colors & White, 4 oz/sq yd.
DP2	Dri-Power™ Bird Eye Mesh. Heavy Weight. 100% Polyester-Colors & White 5.9 oz/sq yd.
HP	Waffle Knit with Moisture Management. 100% Polyester-Colors & White, 4 oz/sq yd.
JA	Mesh Fleece with Moisture Management. 100% Polyester-Whites & Colors, 7.4 oz/sq yd.
LG	Stretch Double Knit. 100% Polyester, 7.5 oz/sq yd.
QL	Microdenier Double Knit. 100% Polyester-Colors & White, 8.1 oz/sq yd.
RQ	Jacquard Circular Knit. 100% Polyester-Colors & White, 5.0 oz/sq yd.
RT	Jacquard. 100% Polyester-Colors & White, 8.5 oz/sq yd.
S2	Circular Knit. 94% Nylon/6% Spandex-Colors 5.4 oz/sq yd, 93% Polyester/7% Spandex-White 5.6 oz/sq yd.
SM	Stretch Mesh. 88% Nylon/12% Spandex-Colors 8.2 oz/sq yd, 90% Polyester/10% Spandex-White 8.3 oz/sq yd.
V2	91% Polyester/9% Spandex-Colors, 92% Polyester/8% Spandex-White, 5.5 oz/sq yd.
VH	Spandex Mesh. 72% Nylon/28% Spandex-Colors, 72% Polyester/28% Spandex-White, 5.6 oz/sq yd.
VT	Dri-Power Stretch Mesh. 92% Nylon/8% Spandex-Colors, 92% Polyester/8% Spandex-White, 6.9 oz/sq yd.
XC	Xtreme Compression Warp Knit. 86% Nylon/14% Spandex-Colors, 86% Polyester/14% Spandex-White, 8.5 oz/sq yd.
XP	Xtreme Power Warp Knit. 82% Nylon/18% Spandex-Colors, 81% Polyester/19% Spandex, 8.2 oz/sq yd.
Z7	Bright Nylon Warp Knit Mesh. 88% Nylon/12% Spandex-Colors, 88% Polyester/12% Spandex-White, 8.4 oz/sq yd.

GENERAL CARE INSTRUCTIONS

Follow the recommended care instructions as labeled in each uniform.

GENERAL CARE INSTRUCTIONS

New Uniforms	<p>Russell recommends the following procedures be used on newly received uniforms to prepare them for use.</p> <p>Wash a medium sized load of uniforms in Cold water (80 ± 5°F) with 1-2 ounces of mild detergent (pH under 10) on an extra large laundry setting for 3 minutes and then drain. Do not overload the machine.</p> <p>Re-wash using the same settings without detergent for 3 minutes and drain.</p> <p>Re-wash again in Cold water (80 ± 5°F) with 1-2 ounces of mild detergent (pH under 10) on an extra large laundry setting for 3 minutes and drain.</p> <p>Wash a final time using the same settings without detergent for 5 minutes and drain.</p> <p>Use the Spin cycle on the washer to extract as much water as possible and tumble dry the garments using very low heat.</p>
Laundering Prep	<p>For best results and maximum wear, launder uniforms immediately after each use.</p> <p>Uniforms need to be inspected for normal wear and tear so repairs can be made prior to washing to prevent further damage.</p> <p>Close any hook and loop tape openings to prevent hook and loop from snagging material during wash.</p> <p>Remove belts and pads, if possible, from uniform before laundering.</p> <p>Do not allow uniforms to lay on itself or in a pile when wet because perspiration can cause fading or color bleeding.</p>
Pre-Treating	<p>Pretreat stains with pre-wash, stain remover or protein release agent while uniform is still damp for no more than 30 minutes.</p> <p>Do not soak uniforms containing nylon or nylon spandex blend.</p>
Washing	<p>Wash uniforms in Cold water (80 ± 5°F) as soon as possible after each use, before stains are allowed to set.</p> <p>A mild detergent (pH under 10) should be used.</p> <p>Do not overload the machine.</p> <p>Use recommended amount of detergent as per detergent manufacturer.</p> <p>Rinse uniforms in Cold water (80 ± 5°F).</p> <p>Remove uniforms from machine immediately after washing to avoid color migration.</p> <p>Do not use chlorine bleach.</p> <p>Do not use fabric softener.</p> <p>Wash white uniforms separately from colored uniforms.</p>
Drying	<p>Remove promptly from washer.</p> <p>Turn uniform reverse side out before machine drying.</p> <p>Tumble dry on low setting (< 140°F).</p> <p>Note excessive heat can cause garment shrinkage, discoloration, degradation, and cracking of lettering.</p> <p>Do not use fabric softener or dryer sheet.</p>
Storage	<p>Uniforms should be completely dry before storing.</p> <p>Store in a cool, dry place away from direct sunlight and fluorescent lighting to prevent mildew or yellowing.</p>
Dry Cleaning	Do not dry clean uniforms.
Ironing	Do not iron uniforms

SUBLIMATED UNIFORM LAUNDERING GUIDE

- Please remember that SUBLIMATED garments may be subject to dye migration due to the following reasons:**
 - From sitting wet for a prolonged period of time**
 - Prevent from sitting wet in a pile, on a bench, or in a bag after use. Hang until being laundered.
 - Prevent from sitting wet in a washer of water or in the bottom of a washer.
 - From exposure to heat over 220 degrees.**
 - The dye may be re-activated to a gas state and move onto any other part of the garment that it may touch when too hot.
 - Avoid heat whenever possible. If heat is being used for drying, please use lowest heat and remove promptly from the warm dryer.
- Since the majority of Russell Athletic uniforms are treated with a moisture management chemical, there is no need to expose the garments to heat as a part of the laundering process.**
 - Heat breaks down the garment fabric, the colors, the decoration, and the spandex fibers in the fabric.
- The suggestion is to WASH following the enclosed instructions; SPIN OUT any excess water; REMOVE from the washer; HANG on a plastic hanger to dry.**

www.unx.com as they are cleaning professionals and located in Greenville, NC.

FOR FURTHER WASHING INFORMATION, GO TO WWW.UNXINC.COM

TERMS & CONDITIONS

SALES POLICY Merchandise in the catalog is available through sporting goods dealers. For the name of the nearest dealer, contact your Russell Athletic representative or write to:

RUSSELL ATHLETIC: Division of Russell Brands, LLC.
One Fruit of the Loom Drive
P.O. Box 90015
Bowling Green, KY 42102-9015

SHIPPING POLICY Upon request Russell Athletic will drop ship merchandise to schools and institutional accounts within the dealer's service territory. Russell Athletic will not drop ship to another dealer or outside a dealer's service areas.

CHANGES/CANCELLATIONS Due to the quick response time required for In-Stock Express Orders, Changes and/or cancellations are not allowed once the order has been placed and the acknowledgement number assigned (except on back orders which may be cancelled).

MINIMUM ORDER CHARGES:

CUSTOM UNIFORMS 100% upcharge for orders of 1 unit
75% upcharge for orders of 2-3 units
50% upcharge for orders of 4-5 units

SUBLIMATION 40% upcharge for orders less than 6

DECORATED STOCK UNIFORM STYLES 40% upcharge for orders less than 6

Orders for less than 6 for Decorated Basics/Workout not accepted.

DECORATION Team names, logos and colors are for demonstration purposes only and are not intended to suggest any affiliation with Russell Brands, LLC.

DELIVERY Each order is acknowledged with an anticipated ship date based on availability of product. This ship date is anticipated but not guaranteed. Shipment of unlettered merchandise from the warehouse is generally within 24 hours. Allow 15 working days for lettering requiring new artwork.

BACKORDER POLICY Every effort will be made to fill your order completely. If back orders occur they will remain open for 30 days unless there is an extension from you, the customer.

LEGALITY OF UNIFORMS Due to varying rules in different conferences, Russell Athletic can not accept responsibility for the legality of uniforms.

TERMS Dealers with established credit will receive terms of Net30, FOB factory, unless otherwise agreed.

RETURNS Russell will not accept return shipments for credit unless the Return Goods authorization label or return goods number is on the shipment. Request return goods authorization within thirty (30) days from receipt of the shipment. We apply a fifteen percent (15%) restocking charge to all accommodation returns. Your Russell Athletic representative can settle claims for damaged or defective merchandise when he visits your store or contact the customer service return department at:

800.551.7625 returns@fruit.com

- Returned merchandise must be clean and unused.
- Do not return items for reconditioning due to normal wear.
- Remove special price tickets or customer identification.

CLAIMS FOR SHORTAGES, PACKING ERRORS AND DAMAGED MERCHANDISE

We inspect all shipments carefully and are not responsible for loss or damage during shipment. Notify the delivering carrier of concealed in-case shortages within 30 days from receipt of shipment. File all claims with the carrier within nine months. If you need help, call Russell Athletic Regional Warehouse immediately. Claims filed after cut-off dates will not be allowed.

ONLINE ORDERING The Customer Information website for online ordering is <https://portal.russellathletic.com>, call for your user ID and Password.

FALL 2017 WAREHOUSE

BASIC FLEECE

PRO 10

10CRJMO.....	4
10HRJMO.....	4
10PRJMO.....	4

80/20 Cotton Rich Fleece

82HNSMO.....	5
82PNSMO.....	5
82CNSMO.....	6
82JNSMO.....	6

50/50 HB Fleece

1Z4HBM0.....	7
693HBM0.....	7
695HBM1.....	8
698HBM1.....	8
029HBM0.....	9
697HBM1.....	9
596HBM0.....	10
696HBM0.....	10

Women's Lightweight Fleece

LF1YHX0.....	11
LF3YHX0.....	11
LF5YHX0.....	11

Youth Fleece

998HBB1.....	12
995HBB1.....	12
997HBB1.....	13
596HBB2.....	13

Tech Fleece

854EFM1.....	14
8TZEFM0.....	14
8TJEFM1.....	15
838EFM2.....	15
TF7EFX0.....	16
TF5EFX0.....	16

TRAINING

ST6NLM0.....	18
ST7NLX0.....	18
28MHQMO.....	19
28WHZX0.....	19
7P8S2XK.....	20
CMZX2B0.....	20
CMZX2M0.....	20
629X2M1.....	21
629X2B1.....	21
630X2M1.....	21
631X2M1.....	21
64STTB0.....	22
64STTM0.....	22
64STTX0.....	22
64LTTM0.....	23
64LTTX0.....	23
QZ7EAM0.....	24
5CPERM0.....	25
TS7X2B0.....	25
TS7X2M0.....	25
25843M0.....	26
651AFM0.....	26
659AFB0.....	26
659AFMK.....	26
PP2JTX0.....	27
WS3JHX0.....	27
CH7PNM0.....	28
CL7PNM0.....	28
CM7PNM0.....	28
8P1PNMK.....	29
8P3PNMK.....	29
6P3NAMK.....	30
6P4NAMK.....	30

SIDELINE

7ELTUM0.....	32
7EPTUM0.....	32
7EPTUX0.....	32
7GPPAM0.....	33
7GPPAX0.....	33
MF6NQMK.....	34
WF6NQXK.....	34
7GFOQM0.....	35
102CGM1.....	36
103CGM1.....	36
660PMMK.....	36
MWPRVM1.....	37
872RVBK.....	37
872RVMK.....	37
7WJQVM0.....	38
7WJQVX0.....	38
7WPQVM0.....	38
7WPQVX0.....	38

SOCKS

RTS01C1.....	39
RTS01AS.....	39
RTS03AQ.....	39
RTS03MP.....	39
RTS03WP.....	39

TEAM SPORTS

Stock Baseball

Base Hit Program.....	42
Quick Turn Braid Program.....	43
343VTM1.....	44
3R6X2MK.....	45
3R6X2BK.....	45
3R7X2MK.....	46
3R7X2BK.....	46
3R8X2MK.....	47
3R8X2BK.....	47
629X2M1.....	48
629X2B1.....	48
33347MK.....	49
338LGMK.....	49
338LGBK.....	49
233L2MK.....	50
233L2BK.....	50
234DBMK.....	50
234DBBK.....	50
236DBMK.....	51
236DBBK.....	51
872RVMK.....	51
872RVBK.....	51
875QXMK.....	52
814LRMK.....	52

Baseball Accessories

BBBELTA.....	53
BBBELTY.....	53
BPC027.....	54
BACP31.....	54
BACP11.....	54
RASL35.....	54
RTSL35.....	54
BASJ17B.....	54
BASP17.....	54
BADZ17.....	54
BASP17B.....	54
7131.....	54

Stock Softball

Base Hit Program.....	55
Quick Turn Braid Program.....	56
737VTX1.....	57
7R6X2XK.....	58
7R8X2XK.....	59
7R8X2GK.....	59
738LGXK.....	60
7S4DBXK.....	60
7S3DBGK.....	61
872RVMK.....	61
872RVBK.....	61
875QXMK.....	62
814LRMK.....	62
BBBELTA.....	63
BBBELTY.....	63

Softball Accessories

RWL629.....	64
BASBKP.....	64
BAKP75.....	64
RAWB15.....	64
RAHB10.....	64

Adult Football

S8693M1.....	66
S05SMMK.....	66
S6793MK.....	66
S57Z7MK.....	67
S57Z7M1.....	67
S65XCMK.....	67
S9593MK.....	68
S096BMK.....	68
F65XPMK.....	69
F25XPMF.....	69
F2562MF.....	69
F25PFMP.....	70
F25PFMF.....	70

Youth Football

S8693M1.....	71
S67AHWK.....	71
S68AHWK.....	71
S65AHWK.....	72
S95AHWK.....	72
S096BWK.....	72
F2569WK.....	73
F25PFWP.....	73
F25PFWF.....	73
F25PFWS.....	73

Accessories

12756MH.....	74
MLB6601.....	74
FBC73MK.....	74
NMP73MK.....	74

Protective

CarbonTek.....	75
RAIGR4.....	76
RYIGR4.....	76

Men's Basketball

3B5VHMK.....	77
3B6VHMK.....	77
2B7DPMK.....	78
2B8DPMK.....	78

Women's Basketball

3B5VHXK.....	79
3B6VHXK.....	79
2B7DPXK.....	80
2B8DPXK.....	80

Practice Basketball

7M2AFMK.....	81
7M2AFBK.....	81
7W2AFXK.....	82
659AFMK.....	83
659AFB0.....	83
7M7AFMK.....	83

Volleyball

1V5X2XK.....	84
1V6X2XK.....	84
7P8S2XK.....	85
2V372XK.....	85
2V572XK.....	85
2V4DPXK.....	86
3V6S2XK.....	86

DECORATIONS

Football Color and Fabric Guide.....	87
Team Placements.....	88-89
Standard Layout Design.....	90
Number & Lettering Fonts.....	91
Font Decoration Options.....	91
RussTwill.....	91
Pricing.....	92
Standard Sleeve Stripe Patterns.....	93
Stock Braid/Trim.....	94
Fabrics Offered.....	95-96
General Care.....	97
Terms & Conditions.....	98



TEAM ON™

Visit **TEAM.RUSSELLATHLETIC.COM**

TO DESIGN YOUR OWN UNIFORM AND VIEW ENTIRE RUSSELL LINE OF APPAREL AND EQUIPMENT.

To contact Russell Athletic Customer Service,

PHONE: 1-888-606-5520

FAX: 1-877-729-4800

Dealers order in-stock express or custom
teamwear styles online:

<https://portal.russellathletic.com>



[Facebook.com/Russellathletic](https://www.facebook.com/Russellathletic)



Available on the
App Store

Check out the new Russell Athletic
Uniform Builder for iPad.