

**R**  
**RUSSELL**  
**ATHLETIC**

Whatever It Takes



**SIDELINE**

**2017**

**OVER 100 YEARS AGO, RUSSELL ATHLETIC WAS BORN ON THE  
PLAYING FIELDS OF AMERICA. NOW, IN AN ERA OF DECREASING  
TEAM SPORTS PARTICIPATION AND INCREASING EGO, HYPE AND  
SELFISHNESS, THE BRAND IS BACK TO BECOME THE EXPERT AND  
DEFENDER OF TEAM SPORTS. INSTITUTIONAL SPORTS. THE  
BIRTHPLACE OF TEAM. WHERE ATHLETES PLAY FOR EACH OTHER,  
THEIR COACH AND THEIR TOWN. WHERE TEAM NEVER STOPS.**



**TEAM ON**



# SIDELINE 2017



**RESPECT  
THE PAST**



**DEFEND  
THE PRESENT**



**OWN  
THE FUTURE**



## NEW GAMEDAY POLO

7GPPAM0 Adult - 95% Polyester / 5% Spandex Cooling Jersey \$37.50

7GPPAX0 Womens - 100% Polyester \$37.50

Sizes: S-XXL    Oversize: 3XL-4XL    Women's: S-XXL

- Built-in cooling Technology, keeps you cool and comfortable.
- Anti-Odor Technology, provides Built in Freshness Protection.
- Vented mech back neck panel, for added ventilation & cooling.
- UPF 30+, provides protection from the sun.
- Clean finished placket with 3 "R" matte snaps for modern styling.
- Reflective tape on shoulders for high visibility in low light conditions.
- Imported.

**Decoration Type:**  
Embroidery

**Decoration Placements:**  
8, 9, 35



WOMEN'S



## MEN'S FLAT FRONT COACHES SLACK

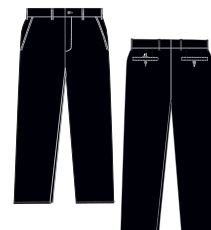
103CGM1

\$54.00

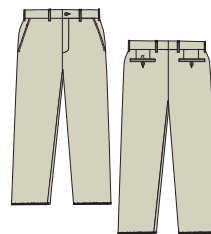
100% Polyester Microfiber

Sizes: 32-56

- Dri-Power® Moisture Wicking Fabric, keeps you dry & cool.
- Wrinkle Resistant Finish, for a wrinkle free wear.
- Side entry pockets, provides storage and warmth.
- Back Welt Pockets with Button Closure, for secure storage.
- 36" unhemmed inseam (pant).
- "R RUSSELL" above left back pocket.
- Imported.



BLK Black



CMT Cement



BLK Black



CMT Cement

## TEAM DYNASTY MEN'S COACHES SHORT

102CGM1

\$43.50

100% Polyester Microfiber

Sizes: 32-56

- Dri-Power® Moisture Wicking Fabric, keeps you dry & cool.
- Wrinkle Resistant Finish, for a wrinkle free wear.
- Side Entry Pockets, provides storage and warmth.
- Back Welt Pockets With Button Closure, for secure storage.
- Front pleats.
- 9" inseam.
- "R RUSSELL" above left back pocket.
- Imported.





## NEW MEN'S ESSENTIAL POLO

7EPTUM0 \$28.00

100% Polyester

Sizes: S-XXL Oversize: 3XL-4XL

- Dri-Power® moisture wicking fabric, keeps you dry & cool.
- Anti-Odor Technology, provides Built in Freshness Protection.
- UPF 30+, provides protection from the sun.
- No curl collar.
- Clean finished placket with 3 logoed buttons for modern styling.
- Imported.

**Decoration Type:**  
Embroidery

**Decoration Placements:**  
8, 9, 35

Women's version: 7EPTUX0



## WOMEN'S ESSENTIAL POLO

7EPTUX0  
100% Polyester

\$28.00

NEW

Sizes: S-XXL

- Dri-Power® moisture wicking fabric, keeps you dry & cool.
- Anti-Odor Technology, provides Built in Freshness Protection.
- UPF 30+, provides protection from the sun.
- No curl collar.
- Clean finished placket with 3 logoed buttons for modern styling.
- Imported.

**Decoration Type:**  
Embroidery

**Decoration Placements:**  
8, 9, 35

Men's version: 7EPTUM0



## NEW MEN'S ESSENTIAL LONG SLEEVE POLO

7ELTUM0 \$37.50

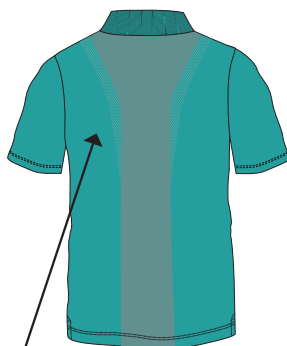
100% Polyester

Sizes: S-4XL

- Dri-Power® moisture wicking fabric, keeps you dry & cool.
- Anti-Odor Technology, provides Built in Freshness Protection.
- UPF 30+, provides protection from the sun.
- No curl collar.
- Clean finished placket with 3 logoed buttons for modern styling.
- Rib cuffs, keeps your sleeves in place.
- Imported.

**Decoration Type:**  
Embroidery

**Decoration Placements:**  
8, 9

**TARGETED BREATHABILITY**

Engineered Jacquard Knit Mesh provides ventilation to keep you cool.

**MEN'S GOLF POLO** **NEW**

7GFQQM0  
100% Polyester

\$42.50

Adult Sizes: S-XXL    Oversize: 3XL

- Dri-Power® moisture wicking fabric, keeps you dry & cool.
- Anti-Odor Technology, provides Built in Freshness Protection.
- UPF 30+, provides protection from the sun.
- Clean finished placket with 3 logoed buttons for modern styling.
- Imported.

**Decoration Type:**  
Embroidery

**Decoration Placements:**  
8, 9, 35

**MEN'S ¼ ZIP PULLOVER** **NEW**

QZ7EAM0  
100% Polyester 2-Tone Interlock

\$30.00

Sizes: XS-3XL

- Light Weight Stretch Fabric provides comfort and full mobility.
- Dri-Power® Moisture Wicking Fabric, keeps you dry & cool.
- Anti-Odor Technology, keeps you fresh throughout your day.
- "R RUSSELL" on left sleeve end.
- Imported.

**Decoration Type:**  
Embroidery, Screen Print

**Decoration Placements:**  
8, 6, BN







## MEN'S WOVEN 1/4 ZIP PULLOVER

MWPRVM1

\$54.00

100% Polyester

Sizes: S-XXL

Oversize: 3XL-4XL

- Self-material cadet collar with stretch binding, providing protection from the elements.
- Reverse coil zipper at center front with logo pull.
- Set-in sleeves with stretch binding at sleeve end, for added comfort.
- Muff pocket with reverse coil zipper openings for phone & media storage.
- Silver reflective "RUSSELL" logo at center back neck.
- Imported.

### Decoration Type:

Embroidery

### Decoration Placements:

8, 9, 32, 35



## SHORT SLEEVE PULLOVER

872RVMK - (Adult)

\$40.00

872RVBK - (Youth)

\$35.00

100% Polyester Woven

Adult Sizes: S-XXL Oversize: 3XL Youth Sizes: S-XL

- Very lightweight breathability fabric.
- Moisture wicking capability.
- Full cut body with quarter zip neck to go over uniform.
- Waist has shock cord with cord lock on wearers left.
- 4 side sew label lower left front.
- "RUSSELL" left sleeve end.
- Imported.

### Decoration Type:

Embroidery, Twill

### Decoration Placements:

8, 9, 32, 35, BN



\* Youth is only available in these colors



**NEW**

## MEN'S/WOMEN'S WOVEN WARM UP JACKET

7WJQVM0 – (Men's) \$50.00  
7WJQVX0 – (Women's) \$50.00  
100% Polyester

Men's Sizes: S-XXL    Oversize: 3XL- 4XL  
Women's Sizes: S-XXL

- Light Weight Stretch Woven Fabric, provides a light comfortable feel.
- Vented mesh back panels, for added ventilation & cooling.
- Imported.

**Decoration Type:**  
Screen Print, Embroidery

**Decoration Placements:**  
18



**NEW**

## MEN'S/WOMEN'S WOVEN WARM UP PANT

7WPQVM0 – (Men's) \$45.00  
7WPQVX0 – (Women's) \$45.00  
100% Polyester

Men's Sizes: S-XXL    Oversize: 3XL- 4XL  
Women's Sizes: S-XXL

- Light Weight Stretch Woven Fabric, provides a light comfortable feel.
- Zippered side pockets, for secure phone and media storage.
- Zippered leg openings, for ease of getting in and out of.
- Imported.

**Decoration Type:**  
Screen Print, Embroidery

**Decoration Placements:**  
18





# THE ESSENTIAL TEE COLLECTION



## ESSENTIAL TEE NEW

64STTM0 – Adult	\$6.50
64STTB0 – Youth*	\$5.50
64STTX0 – Womens	\$6.50

60% Cotton / 40% Polyester Jersey • 4.5 oz / 153 gsm

Adult Sizes: S-XXL    Oversize: 3XL-4XL    Youth Sizes: S-XL    Womens: XS-XXL

- Dri-Power® Moisture Wicking Fabric, keeps you dry & cool.
- Anti-Odor Technology, provides Built in Freshness Protection.
- Soft SpunYarn, delivers a soft comfortable feel.
- Imported.

Decoration Type:                      Decoration Placements:  
 Screen Print                              6, 7, 8, 9, 10, 35, 3 or BN



**NEW**

## MEN'S ESSENTIAL POCKETED SHORT



TS7X2M0 – (Men's)

\$16.00

TS7X2B0 – (Youth)

\$15.00

100% Polyester Interlock

Men's Sizes: S – XXL    Oversize: 3XL

Youth Sizes: S – XL

- Dri-Power® Moisture Wicking Fabric, keeps you dry & cool.
- Side Entry Pockets, for phone & media storage.
- Internal Drawcord, for an adjustable comfort fit.
- 10" Inseam- Men's.
- 7" Inseam-Youth.
- "R RUSSELL" at lower right leg.
- Imported.

### Decoration Type:

Screen Print, Embroidery

### Decoration Placements:

18



## MEN'S POCKETED PERFORMANCE SHORT

5CPERM0

\$27.00

92% Polyester / 8% Spandex Stretch Jersey

Sizes: S – XXL    Oversize: 3XL

- Dri-Power® Moisture Wicking Fabric, keeps you dry & cool.
- Elastic Waistband With Inside Quickcord, for an adjustable comfort fit.
- Angled Side Entry Pockets, for phone & media storage.
- Back Welt Pocket With Zipper Closure, for additional secured storage.
- Flat Seamed Rises & Mesh Gusset, delivers ventilation & cooling.
- Side inserts with 3 needle coverstitch for added ventilation.
- 9" inseam on all sizes.
- Silver reflective heat transfer "R RUSSELL" logo lower right leg.

### Decoration Type:

Embroidery, Screen Print

### Decoration Placements:

18







## STRIATED PERFORMANCE TEE

ST6NLM0

100% Polyester  
4.3 OZ / 146 GSM

\$18.00

Sizes: S-4XL

- Dri-Power® Moisture Wicking Fabric, keeps you dry & cool.
- Set-in sleeves, provides full range of motion.
- "R RUSSELL" on left sleeve end.
- Set-in self-material collar.
- Imported.

**Decoration Type:**  
Screen Print

**Decoration Placements:**  
6, 7, 8, 9, 10, 11, 35, BN



## WOMEN'S STRIATED TEE

**NEW**

ST7NLX0

100% Polyester  
4.3 OZ / 146 GSM

\$18.00

Sizes: S-XXL

- Dri-Power® Moisture Wicking Fabric, keeps you dry & cool.
- Set-in sleeves, provides full range of motion.
- "R RUSSELL" on left sleeve end.
- Imported.

**Decoration Type:**  
Embroidery, Screen Print

**Decoration Placements:**  
6, 7, 8, BN

Men's version: ST6NLM0



## PLAYER'S TEE

28MHQM0

20% Cotton / 80% Polyester  
4.4 OZ / 150 GSM

\$14.50

Adult Sizes: S - XXL  
Oversize: 3XL - 4XL

- Dri-Power® Moisture Wicking Fabric, keeps you dry & cool.
- Three-needle coverstitching at armholes and sideseams.
- Heat transfer "R RUSSELL" logo on left sleeve end.
- Imported.

**Decoration Type:**  
Embroidery, Screen Print

**Decoration Placements:**

3, 35, 6, 7, 8, 9, BN\*

\*Placement BN ONLY available in Screen Print



## WOMEN'S PLAYER'S TEE

28WHQX0

20% Cotton / 80% Polyester  
4.4 OZ / 150 GSM

\$14.50

Women's: S - XXL

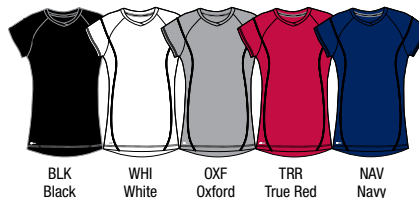
- Dri-Power® Moisture Wicking Fabric, keeps you dry & cool.
- Contoured seams on front and shoulders with 3-needle coverstitching.
- Heat transfer "R RUSSELL" on left sleeve end.
- Imported.

**Decoration Type:**  
Embroidery, Screen Print

**Decoration Placements:**

3, 6, 7, BN\*

\*Placement BN ONLY available in Screen Print





\*Adult Only

## CORE PERFORMANCE TEE

629X2M1 – Adult \$13.50

629X2B1 – Youth \$11.50

100% Polyester Interlock

4.1 OZ / 139 GSM

Adult Sizes: S-4XL

Youth Sizes: S-XL

- Dri-Power® Moisture Wicking Fabric, keeps you dry & cool.
- Anti-Odor Technology, keeps you fresh throughout your day.
- Self-material collar.
- Contrast back neck tape (stealth on all colors).
- "R RUSSELL" on left sleeve end.
- Imported.

### Decoration Type:

Embroidery, Screen Print

### Decoration Placements:

6, 7, 8, 9, 9C, 10, 11, BN

## CORE PERFORMANCE LONG SLEEVE TEE

631X2M1 – Adult

\$16.00

100% Polyester Interlock

4.1 OZ / 139 GSM

Sizes: S-4XL

- Dri-Power® Moisture Wicking Fabric, keeps you dry & cool.
- Anti-Odor Technology, keeps you fresh throughout your day.
- Self-material collar.
- "R RUSSELL" at lower left sleeve.
- Imported.

### Decoration Type:

Embroidery, Screen Print

### Decoration Placements:

6, 7, 8, 9, 9C, BN



## CORE PERFORMANCE SLEEVELESS TEE

630X2M1

\$12.50

100% Polyester Interlock

4.1 OZ / 139 GSM

Sizes: S-3XL

- Dri-Power® Moisture Wicking Fabric, keeps you dry & cool.
- Anti-Odor Technology, keeps you fresh throughout your day.
- Self-material collar.
- "R RUSSELL" at outer center back neck.
- Imported.

### Decoration Type:

Embroidery, Screen Print

### Decoration Placements:

6, 7, 8, 9

## MEN'S 9" POLYESTER TRICOT MESH POCKET SHORT

651AFM0  
100% Polyester

\$14.50

Sizes: S-3XL

- Dri-Power® Moisture Wicking Fabric, keeps you dry & cool.
- Elastic Waistband With Inside Quickcord, for an adjustable comfort fit.
- Side entry pockets, provides phone & media storage.
- 9" inseam on all sizes.
- "R RUSSELL" on lower right leg.
- Imported.

**Decoration Type:**  
Screen Print, Embroidery

**Decoration Placements:**  
18



## MEN'S/YOUTH POLYESTER TRICOT MESH SHORT

659AFMK – Adult \$13.50  
659AFB0 – Youth \$13.00  
100% Polyester Tricot Mesh

Adult Sizes: S-XXL      Oversize: 3XL-4XL  
Youth Sizes: S-XL

- Dri-Power® Moisture Wicking Fabric, keeps you dry & cool.
- Elastic Waistband With Inside Quickcord, for an adjustable comfort fit.
- 9" inseam adult / 7" inseam youth.
- No Pockets.
- "R RUSSELL" on upper right hip.
- Imported.

**Decoration Type:**  
Screen Print, Embroidery

**Decoration Placements:**  
17, 18

**Notes:**  
White offered in S-XXL only



## WOMEN'S 3" INSEAM SHORT

WS3JHX0  
100% Polyester Woven

\$25.50

Women's: S - XXL

- 1" finished elastic 4 needle waistband, for comfort.
- Contrast side inserts.
- Mesh brief liner.
- "R RUSSELL" heat transfer logo on lower right leg.
- Imported.

**Decoration Type:**  
Screen Print, Embroidery

**Decoration Placements:**  
18



## WOMEN'S PERFORMANCE PANT

PP2JTX0 \$45.00  
86% Polyester / 14% Spandex

Women's: S - XXL

- Flat waistband with 3/4" elastic, for added comfort.
- Contrast mesh in inner waistband.
- Graded inseam.
- 3/4" hemmed bottom.
- "R RUSSELL" heat transfer at wearer's right hip.

**Decoration Type:**  
Screen Print, Embroidery

**Decoration Placements:**  
18





BLK  
BlackNAV  
NavyOXF  
OxfordBRH  
Birch**PRO10 FLEECE CREW****10CRJMO****\$55.00**83% Cotton / 17% Polyester  
12.5 OZ / 424 GSM

Sizes: S-XXL    Oversize: 3XL-4XL

- Ring Spun Yarn, provides a soft comfortable feel.
- Premium Heavy weight 3 End Fleece, helps provide additional warmth.
- Anti Pill, ensures an always smooth and comfortable feel.
- 1x1 rib with spandex, collar, side inserts, cuffs, and band for added stretch and recovery for a great fit.
- 2-ply rib side panels and undersleeve gusset for greater range of movement.
- Imported.

**Decoration Type:**

Screen Print, Embroidery, Twill

**Decoration Placements:**

6, 7, 8, 9

**PRO10 FLEECE PULLOVER HOOD****10HRJMO****\$60.00**83% Cotton / 17% Polyester  
12.5 OZ / 424 GSM

Sizes: S-XXL    Oversize: 3XL-4XL

- Ring Spun Yarn, provides a soft comfortable feel.
- 3 End Fleece, helps provide additional warmth.
- Anti Pill, ensures an always smooth and comfortable feel.
- Front Muff Pocket, for phone and media storage.
- 2 panel, 2 ply hood, delivers additional protection from the elements.
- 1x1 rib with spandex, collar, side inserts, cuffs, and band for added stretch and recovery for a great fit.
- 2 ply rib side panels and undersleeve gusset for greater range of movement.
- Imported.

**Decoration Type:**

Screen Print, Embroidery, Twill

**Decoration Placements:**

7, 8, 9, 36

BLK  
BlackNAV  
NavyOXF  
OxfordBRH  
Birch**PRO10 FLEECE PANT****10PRJMO****\$55.00**83% Cotton / 17% Polyester  
12.5 OZ / 424 GSM

Sizes: S-XXL    Oversize: 3XL-4XL

- Ring Spun Yarn, provides a soft comfortable feel.
- 3 End Fleece, helps provide additional warmth.
- Anti Pill, ensures an always smooth and comfortable feel.
- Elastic Waistband With Chunky Knit Drawcord, for an adjustable comfort fit.
- 1x1 ribbed welt pockets.
- Imported.

**Decoration Type:**

Screen Print, Embroidery, Twill

**Decoration Placements:**

17, 18

BLK  
BlackNAV  
NavyOXF  
OxfordBRH  
Birch

**MEN'S COTTON RICH FLEECE CREW****NEW**

82CNSM0

\$30.00

Heathers: 66% Cotton / 34% Polyester  
 Medium Grey Heather: 75% Cotton / 25% Polyester  
 Ash: 82% Cotton / 18% Polyester  
 8.5 OZ / 288 GSM

Sizes: XS-XXL      Oversize: 3XL-4XL

- Ring Spun Yarn, delivers a soft comfortable feel.
- 3 End Fleece, helps provide additional warmth.
- Anti Pill, ensures an always smooth and comfortable feel.
- Zippered Front Muff Pocket, for phone & media storage.
- Tonal "R" logo on left sleeve.
- Imported.

**Decoration Type:**

Screen Print, Embroidery, Twill

**Decoration Placements:**

6, 7, 8, 9, BN

**MEN'S COTTON RICH FLEECE PULLOVER HOOD****NEW**

82HNSM0

\$37.50

Heathers: 66% Cotton / 34% Polyester  
 Medium Grey Heather: 75% Cotton / 25% Polyester  
 Ash: 82% Cotton / 18% Polyester  
 8.5 OZ / 288 GSM

Sizes: XS-XXL      Oversize: 3XL-4XL

- Ring Spun Yarn, delivers a soft comfortable feel.
- 3 End Fleece, helps provide additional warmth.
- Anti Pill, ensures an always smooth and comfortable feel.
- Zippered Front Muff Pocket, for phone & media storage.
- Two-ply hood with grommets, for additional protection from the elements.
- Tonal "R" logo on left sleeve.
- Imported.

**Decoration Type:**

Screen Print, Embroidery, Twill

**Decoration Placements:**

7, 8, 9, 36,6M

**NEW****MEN'S COTTON RICH FLEECE POCKET PANT**

82PNM0

\$30.00

Heathers: 66% Cotton / 34% Polyester  
 Medium Grey Heather: 75% Cotton / 25% Polyester  
 Ash: 82% Cotton / 18% Polyester  
 8.5 OZ / 288 GSM

Sizes: S-XXL      Oversize: 3XL-4XL

- Ring Spun Yarn, delivers a soft comfortable feel.
- 3 End Fleece, helps provide additional warmth.
- Anti Pill, ensures an always smooth and comfortable feel.
- Side Entry Pockets, plus Hidden Media Pocket, for additional media storage.
- Imported.

**Decoration Type:**

Screen Print, Embroidery

**Decoration Placements:**

18

**NEW****MEN'S COTTON RICH FLEECE JOGGER**

82JNSM0

\$32.50

Heathers: 66% Cotton / 34% Polyester  
 Medium Grey Heather: 75% Cotton / 25% Polyester  
 Ash: 82% Cotton / 18% Polyester  
 8.5 OZ / 288 GSM

Sizes: XS-XXL      Oversize: 3XL

- Tapered Fit.
- Ring Spun Yarn, delivers a soft comfortable feel.
- 3 End Fleece, helps provide additional warmth.
- Zippered Pockets, for phone & media storage.
- Anti Pill, ensures an always smooth and comfortable feel.
- Imported.

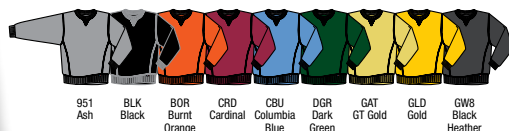
**Decoration Type:**

Screen Print, Embroidery

**Decoration Placements:**

18





\* S-2XL

**DRI-POWER® FLEECE CREW****698HBM1****\$18.50**

50% Cotton / 50% Polyester  
Oxford: 52% Polyester / 48% Cotton  
9.3 OZ / 315 GSM

Sizes: S-XXL    Oversize: 3XL-4XL

- Dri-Power® Moisture Wicking Fabric, keeps you dry & warm.
- Rib knit cuffs and waistband, for added comfort.
- "R" logo tab at waistband.
- Imported.

**Decoration Type:**

Screen Print, Embroidery, Twill

**Decoration Placements:**

6, 7, 7C, 8, 9, BN

**DRI-POWER® FLEECE PULLOVER HOOD****695HBM1****\$25.50**

Colors: 50% Cotton / 50% Polyester  
Oxford: 52% Polyester / 48% Cotton  
9.3 OZ / 315 GSM

Sizes: S-XXL    Oversize: 3XL-4XL

- Dri-Power® Moisture Wicking Fabric, keeps you dry & warm.
- Two-Ply Hood With Grommets and drawcord for additional protection from the elements.
- Rib knit cuffs and waistband, for added comfort.
- Front Muff Pocket, for phone & media storage.
- "R" logo tab at waistband.
- Imported.

**Decoration Type:**

Screen Print, Embroidery, Twill

**Decoration Placements:**

7, 7C, 8, 9, 9C, 36



\* S-3XL

**DRI-POWER® FLEECE FULL ZIP HOOD****697HBM1****\$29.50**

Colors: 50% Cotton / 50% Polyester  
Oxford: 52% Polyester / 48% Cotton  
9.3 OZ / 315 GSM

Sizes: S-XXL    Oversize: 3XL

- Dri-Power® Moisture Wicking Fabric, keeps you dry & warm.
- Two-Ply Hood With Grommets and matching draw cord, delivers additional protection from the elements.
- Full front center zipper.
- Rib knit cuffs and waistband, for added comfort.
- Front Muff Pocket, provides storage and warmth.
- "R" logo tab at waistband.
- Imported.

**Decoration Type:**

Embroidery, Screen Print, Twill

**Decoration Placements:**

6, 7 (Twill Only), 8, 9



BLK Black    CRD Cardinal    QZB Navy    OXF Oxford

**DRI-POWER® OPEN-BOTTOM FLEECE POCKET PANT****596HBM0****\$23.00**

Colors: 50% Cotton / 50% Polyester  
Oxford: 52% Polyester / 48% Cotton  
9.3 OZ / 315 GSM

Sizes: S-XXL    Oversize: 3XL-4XL

- Dri-Power® Moisture Wicking Fabric, keeps you dry & warm.
- Side Entry Pockets, provide storage and warmth.
- Elastic Waistband With Inside Quickcord, for an adjustable comfort fit.
- "R RUSSELL" on right hip.
- Graded inseams: S-30", M-31", L-32", XL-33", 2XL-34", 3XL-35", 4XL-36".
- Imported.

**Decoration Type:**

Screen Print, Embroidery, Twill

**Decoration Placements:**

17, 18



BLK Black    GWS Black Heather    CRD Cardinal    DGR Dark Green    MAR Maroon    QZB Navy    OXF Oxford    PUR Purple    ROY Royal    TRR True Red

INSEAM:  
S 30"    XL 33"  
M 31"    XXL 34"  
L 32"    3XL 35"  
4XL 36"







## WOMEN'S LIGHTWEIGHT FLEECE CREW

LF3YHX0

\$32.00

60% Cotton / 40% Polyester  
7.6 OZ / 258 GSM

Sizes: S-XXL

- 1x1 ribbed collar, v-patch, cuffs and waistband, for added comfort.
- Raglan sleeves with 2 needle cover seam.
- "R RUSSELL" embroidery logo on lower left sleeve.
- Imported.

### Decoration Type:

Screen Print, Embroidery, Twill

### Decoration Placements:

6, 7, 8, 9, BN

## WOMEN'S LIGHTWEIGHT FLEECE PULLOVER HOOD

LF1YHX0

\$34.00

60% Cotton / 40% Polyester  
7.6 OZ / 258 GSM

Sizes: S-XXL

- Two piece single ply hood provides protection from the elements.
- Front Muff Pocket, for phone & media storage.
- "R RUSSELL" embroidery on wearer's left sleeve cuff.
- Imported.

### Decoration Type:

Screen Print, Embroidery, Twill

### Decoration Placements:

7, 8, 9



## WOMEN'S LIGHTWEIGHT FLEECE PANT

LF5YHX0

\$29.00

60% Cotton / 40% Polyester  
7.6 OZ / 258 GSM

Sizes: S-XXL

- Rib trim waistband with outside drawcord, for added comfort.
- Side entry pockets with rib trim.
- Upper back yoke with single needle topstitch.
- Logo at right hip.
- Imported.

### Decoration Type:

Screen Print, Embroidery

### Decoration Placements:

18

# TERMS & CONDITIONS

**SALES POLICY** Merchandise in the catalog is available through sporting goods dealers. For the name of the nearest dealer, contact your Russell Athletic representative or write to:

**RUSSELL ATHLETIC:** Division of Russell Brands, LLC.  
One Fruit of the Loom Drive  
P.O. Box 90015  
Bowling Green, KY 42102-9015

**SHIPPING POLICY** Upon request Russell Athletic will drop ship merchandise to schools and institutional accounts within the dealer's service territory. Russell Athletic will not drop ship to another dealer or outside a dealer's service areas.

**CHANGES/CANCELLATIONS** Due to the quick response time required for In-Stock Express Orders, Changes and/or cancellations are not allowed once the order has been placed and the acknowledgement number assigned (except on back orders which may be cancelled).

## MINIMUM ORDER CHARGES:

**CUSTOM UNIFORMS** 100% upcharge for orders of 1 unit  
75% upcharge for orders of 2-3 units  
50% upcharge for orders of 4-5 units

**SUBLIMATION** 40% upcharge for orders less than 6

**DECORATED STOCK UNIFORM STYLES** 40% upcharge for orders less than 6

Orders for less than 6 for Decorated Basics/Workout not accepted.

**DECORATION** Team names, logos and colors are for demonstration purposes only and are not intended to suggest any affiliation with Russell Brands, LLC.

**DELIVERY** Each order is acknowledged with an anticipated ship date based on availability of product. This ship date is anticipated but not guaranteed. Shipment of unlettered merchandise from the warehouse is generally within 24 hours. Allow 15 working days for lettering requiring new artwork.

**BACKORDER POLICY** Every effort will be made to fill your order completely. If back orders occur they will remain open for 30 days unless there is an extension from you, the customer.

**LEGALITY OF UNIFORMS** Due to varying rules in different conferences, Russell Athletic can not accept responsibility for the legality of uniforms.

**TERMS** Dealers with established credit will receive terms of Net30, FOB factory, unless otherwise agreed.

**RETURNS** Russell will not accept return shipments for credit unless the Return Goods authorization label or return goods number is on the shipment. Request return goods authorization within thirty (30) days from receipt of the shipment. We apply a fifteen percent (15%) restocking charge to all accommodation returns. Your Russell Athletic representative can settle claims for damaged or defective merchandise when he visits your store or contact the customer service return department at:

**800.551.7625 returns@fruit.com**

- Returned merchandise must be clean and unused.
- Do not return items for reconditioning due to normal wear.
- Remove special price tickets or customer identification.

## CLAIMS FOR SHORTAGES, PACKING ERRORS AND DAMAGED MERCHANDISE

We inspect all shipments carefully and are not responsible for loss or damage during shipment. Notify the delivering carrier of concealed in-case shortages within 30 days from receipt of shipment. File all claims with the carrier within nine months. If you need help, call Russell Athletic Regional Warehouse immediately. Claims filed after cut-off dates will not be allowed.

**ONLINE ORDERING** The Customer Information website for online ordering is <https://portal.russellathletic.com>, call for your user ID and Password.

**FALL 2017 SIDELINE****GAME DAY COLLECTION**

7GPPAM0 .....	4
7GAPPAX0 .....	4
103CGM1 .....	4
102CGM1 .....	4
7ELTUM0 .....	5
7EPTUX0 .....	5
7EPTUM0 .....	5
7GFQQM0 .....	6
QZ7EAM0 .....	6
MWPRVMK .....	7
872RVMK .....	7
872RVBK .....	7
7WJQVM0 .....	8
7WJQVX0 .....	8
7WPQVM0 .....	8
7WPQVX0 .....	8

**ESSENTIAL COLLECTION**

64STTM0 .....	9
64STTB0 .....	9
64STTX0 .....	9
TS7X2M0 .....	10
TS7X2B0 .....	10
5CPERM0 .....	10

**TRAINING COLLECTION**

ST6NLM0 .....	11
ST7NLX0 .....	11
28MQM0 .....	11
28WHQX0 .....	11
629X2M1 .....	12
629X2B1 .....	12
631X2M1 .....	12
630X2M1 .....	12
651AFM0 .....	13
659AFNJ .....	13
659AFB0 .....	13
WS3JHX0 .....	13
PP2JTX0 .....	13

**FLEECE COLLECTION**

10CRJM0 .....	14
10HRJM0 .....	14
100RHN0 .....	14
82CNSM0 .....	15
82HNSM0 .....	15
82PNSM0 .....	15
82JNSM0 .....	15
698HBM1 .....	16
695HBM1 .....	16
697HBM1 .....	16
596GBM0 .....	16
LF3YHX0 .....	17
LF1YHX0 .....	17
LF5YHX0 .....	17

Terms and Conditions .....	18
----------------------------	----





# TEAM ON™

Visit **TEAM.RUSSELLATHLETIC.COM**

TO DESIGN YOUR OWN UNIFORM AND VIEW ENTIRE RUSSELL LINE OF APPAREL AND EQUIPMENT.



To contact Russell Athletic Customer Service,

**PHONE: 1-888-606-5520**

**FAX: 1-877-729-4800**

Dealers order in-stock express or custom  
teamwear styles online:

**<https://portal.russellathletic.com>**



Facebook.com/Russellathletic



Available on the  
**App Store**

Check out the new Russell Athletic  
Uniform Builder for iPad.