

FALL 2011



PRE-SEASON PROGRAM





FALL 2011 PRE-SEASON PROGRAM

ORDER TERMS

DOLLAR VALUE OF ORDER	FREIGHT	TERMS (SUBJECT TO CREDIT APPROVAL)	OEM/FACTORY AUTHORIZED PARTS MULTIPLIER
\$15,000.00 & over	Free	Net 90 day billing OR 3%/10 th cash discount on this order	.50
\$5,000.00 - \$14,999.99	Free	Net 90 day billing OR 2%/10 th cash discount on this order	.52
\$3,000.00 - \$4,999.99	Free	Net 90 day billing OR 2%/10 th cash discount on this order	.54
\$500.00 - \$2,999.99	Free	Net 90 day billing OR 1%/10 th cash discount on this order	.56

YOUR MULTIPLIER IS: _____

PROGRAM DETAILS

- Pre-Season orders must be placed by Friday, October 21, 2011.
- Placing a minimum \$3,000 Pre-Season order, excluding commodities, on or before Friday, September 30, 2011 guarantees you will receive Pre-Season pricing on all additional orders placed through Friday December 30, 2011. (Note: Pre-Season price will not apply on additional orders of commodity items, ie linesets, copper, black pipe.) If the minimum purchase criteria is not met, the special Pre-Season price applies only to the Pre-Season order and the competitive In-Season price will be charged on all other orders.
- Equipment, refrigerant, and semi-hermetic compressors do not count toward the dollar value of the order for the OEM/Factory Authorized Parts Multiplier and Pre-Season terms do not apply, even if listed in the book. However, we will ship them free freight with your program order.
- The competitive In-Season price will apply to all re-orders through Friday, March 2, 2012
- Terms and free freight will apply to any back-ordered item.
- All orders/terms are subject to credit approval.
- Not responsible for errors or omissions. Prices subject to change without prior notice.
- Pre-Season orders will exempt non-dealers from warranty processing fees.
- Pricing based on quantity "each" cost, unless otherwise stated.
- Totaline branded product will no longer be accepted as warranty replacements for Factory Authorized parts. Example: P257-8729 may not be used as a warranty motor replacement.

Comfort Products Distributing intends to hold this published pricing through the listed dates, however, cost fluctuations may cause unexpected price changes to our customers.

Contact your local Comfort Products Distributing office or order online at
www.comfortproducts.com

WORKING HARD & *Playing* HARD

Comfort Products Distributing and YOU

OPTION 1 SOUTH DAKOTA PHEASANT HUNT

Be one of the first 20 customers to place a \$16,000 Fall Pre-Season Parts order and reserve one spot on an all inclusive, 3 day pheasant hunt in South Dakota.

Arrive on October 19th, hunt the 20th-22nd, and depart on the 23rd after breakfast.

Includes:

- Hunt on private leased land
- Guide
- Licence and stamps
- 3 days hunting, 4 nights lodging
- Meals and refreshments
- Pheasant banquet
- Ammunition (12, 16, 20 gauge)
- Blue Rock shoot
- Cleaning, freezing, and bagging of birds
- Cooler to transport birds

Does not include transportation to and from lodge or a gun.



OPTION 2 iPad



Be one of the first 15 customers to place a qualifying \$10,000 Fall Pre-Season Parts order and receive one 16 GB iPad with wi-fi and 3G connection compatibility.

For technical information and features of the iPad visit:

www.apple.com/ipad

OPTION 3 CHARGERS VS CHIEFS GAME

Be one of the first 4 customers to place a qualifying \$12,000 Fall Pre-Season Parts order and receive a 1 night trip for you and a friend to the San Diego Chargers vs Kansas City Chiefs Game at Arrowhead Stadium in Kansas City, MO.

Arrive October 31st in Kansas City, tail gate and go to the game at 7:30pm on October 31st. Depart on November 1st.

Includes:

- Lodging and tickets to the game for you and one guest

Does not include transportation to and from Kansas City.



SCORE A ROYAL FLUSH

Introducing...

TopTech Copper Flush

comfort | excellence

featuring Honeywell Genetron® ST-20™



Start
your lines
fresh...

Buy a TopTech Copper Flush PromoPak* and receive a deck of TopTech Cards with BIG discount "Wild Card" coupons.

PromoPaks include two 1 lb. containers of TopTech Copper Flush and FREE Flush Valve. (part # TT-Flush-P16) \$43.85

*While supplies last.



- **Cleaner**
Removes more moisture, debris, oil and acid
- **Faster**
Up to 30% faster than other brands
- **Safer**
TopTech Copper Flush is a non-flammable product... Other brands contain up to 80% flammable components

Responsible Care®
Good Chemistry at Work

TECHNOLOGY
SERIES


comfort | excellence
Carrier Enterprise

TopTech

comfort | excellence

Purchase \$500 or more of qualifying *TopTech* items in this catalog and receive Pre-Season pricing on *TopTech* items through the end of the year!



For additional product information visit:

Honeywell



Purchase any Honeywell product in this catalog and receive your choice of an iTunes or Cabela's gift card!



\$25 Gift Card for \$750 in purchases
\$50 Gift Card for \$1,000 in purchases
\$75 Gift Card for \$1,500 in purchases

Offer includes *TopTech* humidifiers!

Igniters & Ignition Modules- pages 20 & 22

Air Filters- page 44

*Gas Valves & Thermocouples
pages 22 & 23*

Thermostats- page 27

Humidifiers- page 43

Now a Honeywell Contractor PRO headquarters, visit

HEAT PACKS

ORIGINAL HEAT PACK

HH84AA020	Circuit Board
HH84AA021	Circuit Board
CESO110057-02	Circuit Board
325878-751	Circuit Board
LH680014	ELECTRODE
LH33CM018	Flame Sensor
EF32CW233	Gas Valve
LH33ZS004	Hot Surface Ignitor
313680-751	Inducer Board
LH680005	3 Wire Pilot
LH680512	ELECTRODE
LH33WZ510	Flame Sensor
307566-751	Fuse Link
MA-641	Tool Box

\$706.86

(#17995485)

80% HEAT PACK

LH33ZS004	Ignitor
LH680014	Flame Sensor
HK42FZ017	CIRCUIT BOARD
HK42FZ013	CIRCUIT BOARD
HK42FZ014	CIRCUIT BOARD
HK42FZ026	CIRCUIT BOARD
HH18HA495	Rollout Switch
HT01BC116	Transformer
HK06WC091	Low Fire Pressure Switch
HH18HA493	Draft Switch
HK06WC092	High Pressure Switch
MA-641	Tool Box

\$804.12

(#17995491)

90% HEAT PACK

HT01BC116	Transformer
HK42FZ014	Circuit Board
325878-751	Circuit Board
HK42FZ026	Circuit Board
HK06NB123	Pressure Switch
HK06NB124	Pressure Switch
HH18HA452	Rollout Switch
LH33ZS004	Ignitor
LH680013	Flame Sensor
LA660002	Cooling Fan
MA-641	Tool Box

\$624.19

(#17995492)

95% HEAT PACK **-NEW!-**

HH680348	Switch
HH680352	Switch
HH680353	Switch
HH680354	Switch
HH680357	Switch
HK06NA014	Switch
HK06NA016	Switch
HK06NA018	Switch
HK42FZ018	CONTROL FURNACE 1-STG
EF32CB192	Gas Valve
MA-641	Tool Box

\$231.44

(#17995496)

STARTER KITS

BLOWER MOTOR STARTER KIT

Qty	Part #	Description
3	TT-E33-3SP1	1/3hp 115v Blower Motor
2	TT-E50-3SP1	1/2hp 115v Blower Motor
2	TT-E75-3SP1	3/4hp 115v Blower Motor
3	TT-E50-MSP1	Multi Speed 115v Blower Motor

Free TopTech Tool Pouch!

\$570.23

(#17995516)



CONDENSER FAN MOTOR STARTER KIT

Qty	Part #	Description
2	TT-C25-1SP2	1/4hp 1075 230v
3	TT-C33-1SP2	1/3hp 1075 230v
2	TT-C50-1SP2	1/2hp 1075 230v
2	TT-C50-MSP2	1/2hp Multi Motor

Free TopTech Tool Pouch!

\$475.00

(#17995518)



THERMOSTAT STARTER KIT

Qty	Part #	Description
2	TT-N-701	TOPTECH 1H/1C HC/HP NP;TSTAT
2	TT-P-705	TOPTECH 1H/1C HC/HP PROG;TSTAT
2	TT-N-751H	TOPTECH 3H/2C HC/HP NP;TSTAT w/ Humid Ctrl
2	TT-S-855	TOPTECH 3H/2C HC/HP PROG;TSTAT
2	TT-S-955WH	TOPTECH 3H/2C HC/HP PROG;TSTAT w/ Humid Ctrl

Free TopTech Tool Pouch!

\$572.70

(#17995523)



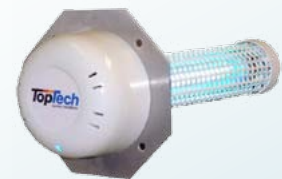
INDOOR AIR QUALITY STARTER KIT

Qty	Part #	Description
1	TT-HUM-225	Bypass Flow-Thru Humidifier 12 GPD
1	TT-HUM-265	Bypass Flow-Thru Humidifier 17 GPD
1	TT-PAD-1	Humidifier Pad 265 & 365
1	TT-PAD-2	Humidifier Pad 225
1	TT-AK249	AIR KNIGHT 9" 24V IN DUCT;AIR PURIFIER
1	TT-UV24-14	24 VOLT UV LIGHT - WITH FILTER SHIELD
1	TT-MAC-1625	FURNACE MERV 11 MEDIA;AIRCLEANER
1	TT-MAC-2020	FURNACE MERV 11 MEDIA;AIRCLEANER
1	TT-FM-1625	MERV 11 16 X 25 X 4
1	TT-FM-2020	MERV 11 20 X 20 X 4

Free TopTech Tool Pouch!

\$818.77

(#17996874)



Insulated



Insulated

Insulated

Air Handler Sizes:

#TT-MAC-1722:

(22.125"D x 17"W x 6"H)

#TT-MAC-2122

(22.125"D x 21"W x 6"H)

#TT-MAC-2522

(22.125"D x 26"W x 6"H)

Furnace Filter Sizes:

#TT-MAC-1625

(27.125"D x 17"H x 6"W)

#TT-MAC-2020

(22.125"D x 21"H x 6"W)

#TT-MAC-2025

(27.125"D x 21"H x 6"W)

Insulated with Reflectix®



Reflectix, Inc.

- Sized for air handlers and furnaces
- **Reflectix® R-4.2 insulated** cabinet and door
- Low pressure drop (0.181" @ 492 FPM)
See installation sheet for additional detail information
- Upgradeable to MERV 15
- Utilizes **standard** size media...**no custom** sizes to order
- Includes duct/equipment mounting gasket and door cleaner
- Easy filter size identification printed on door label
- Solid 22 gauge galvanized steel cabinet
- Powder coated baked painted door

Replacement Filters

Air Handler Models:

#TT-MAC-1722: #TT-FM-1620 (16x20x4)

#TT-MAC-2122: #TT-FM-2020 (20x20x4)

#TT-MAC-2522: #TT-FM-2025 (20x25x4)

Furnace Models:

#TT-MAC-1625: #TT-FM-1625 (16x25x4)

#TT-MAC-2020: #TT-FM-2020 (20x20x4)

#TT-MAC-2025: #TT-FM-2025 (20x25x4)



Save Paper!

In an effort to better serve our customers and save the environment, Comfort Products Distributing is updating it's customer information to include an e-mail address. Please fill out the information below and fax it to 877-452-0937, your information will not be sold or given to any third parties.

Company Name: _____

Account Number: _____

Principal E-mail Address: _____

Sales Manager E-mail: _____

Have there been any recent changes to your address, phone number, or fax ?

Address: _____

Phone: _____ **Fax:** _____

Please fill out this form and fax it to:
877-452-0937

INDEX

Click on the product name to jump to the corresponding page.

37	24	49
37	22-23	41
44	57	34
44-46	58	37
43-46	19	40
39	16	56
24	7	30-31
24-25	43-44	41
66	22	26
12-13	20	23
16-18	42	28
40	36	28
34	38	26-27
32	36	67-69
13-14	54-55	19
39	14	48
72	12-14	47
15	2	8-9
35	50-52	15
4	23	18
70	16	21
29	2	32
17	33	39
18	33	43
53	34	29
20	19	28
71	16-17	27
29	59-65	

Contact your local Comfort Products Distributing office or order online at
www.comfortproducts.com

BLOWER MOTORS



BLOWER MOTORS



Part #	Description	In Season Price	Pre-Season Price
TT-E25-3SP1	EVAP 3SP 1075 115V 1/4HP	\$54.58	\$44.12
TT-E25-3SP2	EVAP 3SP 1075 230V 1/4HP	\$55.85	\$45.63
TT-E33-3SP1	EVAP 3SP 1075 115V 1/3HP	\$60.55	\$50.46
TT-E33-3SP2	EVAP 3SP 1075 230V 1/3HP	\$60.83	\$50.69
TT-E50-3SP1	EVAP 3SP 1075 115V 1/2HP	\$75.88	\$62.19
TT-E50-3SP2	EVAP 3SP 1075 230V 1/2HP	\$75.17	\$60.75
TT-E75-3SP1	EVAP 3SP 1075 115V 3/4HP	\$83.72	\$67.71
TT-E75-3SP2	EVAP 3SP 1075 230V 3/4HP	\$84.87	\$68.88



MULTI HP BLOWER MOTORS

Part #	Description	In Season Price	Pre-Season Price
TT-E50-MSP1	EVAP 1/2HP MULTI MOTOR 115V	\$77.74	\$63.38
TT-E50-MSP2	EVAP 1/2HP MULTI MOTOR 230V	\$75.43	\$61.01
TT-E75-MSP1	EVAP 3/4HP MULTI MOTOR 115V	\$87.87	\$72.13
TT-E75-MSP2	EVAP 3/4HP MULTI MOTOR 230V	\$87.05	\$71.91



BLOWER MOTORS

Part #	Description	In Season Price	Pre-Season Price
TR-3583	1/4 HP, 115V blower motor	\$71.26	\$65.20
TR-3584	1/4 HP, 230V blower motor	\$73.00	\$66.79
TR-3585	1/3 HP, 115V blower motor	\$73.88	\$67.59
TR-3586	1/3 HP, 230V blower motor	\$75.61	\$69.17
TR-3587	1/2 HP, 115V blower motor	\$89.51	\$81.89
TR-3588	1/2 HP, 230V blower motor	\$91.25	\$83.48
TR-3589	3/4 HP, 115V blower motor	\$102.54	\$93.81
TR-3590	3/4 HP, 230V blower motor	\$104.28	\$95.40

BLOWER MOTORS

MULTI HP BLOWER MOTORS



Part #	Description	In Season Price	Pre-Season Price
TR-3465	1/3-1/2 HP, 208/230V multi-purpose	\$77.97	\$71.33
TR-3463	1/2-1/6 HP, 115V multi-purpose motor	\$85.06	\$77.81
TR-3464	1/2-1/6 HP, 230V multi-purpose motor	\$86.83	\$79.44

BELT DRIVE BLOWER MOTORS



Part #	Description	In Season Price	Pre-Season Price
TR-B206	1/4 HP belt drive motor	\$73.99	\$67.69
TR-B207	1/3 HP belt drive motor	\$79.15	\$72.41
TR-B208	1/2 HP belt drive motor	\$105.92	\$96.90

CONDENSER FAN MOTORS



CONDENSER FAN MOTORS **TopTech** comfort | excellence

Part #	Description	In Season Price	Pre-Season Price
TT-C25-1SP2	COND 1SP 1075 230V 1/4HP	\$50.39	\$44.70
TT-C33-1SP2	COND 1SP 1075 230V 1/3HP	\$58.90	\$54.57
TT-C50-1SP2	COND 1SP 1075 230V 1/2HP	\$70.87	\$60.04

CONDENSER FAN MOTORS



MULTI HP CONDENSER FAN MOTORS

Part #	Description	In Season Price	Pre-Season Price
TT-C75-1SP2	COND 1SP 1075 230V 3/4HP	\$80.10	\$67.69
TT-C33-MSP3	COND 1/3HP MULTI MOTOR	\$71.46	\$60.74
TT-C50-MSP2	COND 1/2HP MULTI MOTOR	\$74.58	\$63.93



CONDENSER FAN MOTORS

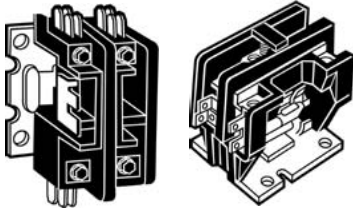
Part #	Description	In Season Price	Pre-Season Price
TR-3728	1/4 HP COND. FAN MOTOR	\$62.58	\$57.26
TR-3729	1/3 HP COND. FAN MOTOR	\$66.88	\$61.18
TR-3730	1/2 HP COND. FAN MOTOR	\$76.99	\$70.43

MOTOR ACCESSORIES

MOTOR/BLOWER ACCESSORIES

Part #	Description	In Season Price	Pre-Season Price
UP1	Ultimate Puller Blade & Blower	\$51.58	\$47.90

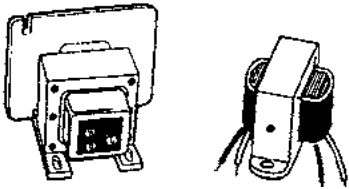
CONTACTORS



CONTACTORS

Part #	Description	In Season Price	Pre-Season Price
TT-CON-1/24/30	1 POLE 24 VAC 30 AMP	\$5.72	\$5.53
TT-CON-1/24/40	1 POLE 24 VAC 40 AMP	\$7.56	\$7.11
TT-CON-2/24/30	2 POLE 24 VAC 30 AMP	\$5.63	\$5.34
TT-CON-2/24/40	2 POLE 24 VAC 40 AMP	\$10.75	\$10.54
TT-CON-3/24/30	3 POLE 24 VAC 30 AMP	\$13.60	\$12.81
TT-CON-3/24/40	3 POLE 24 VAC 40 AMP	\$15.64	\$14.64

TRANSFORMERS



TRANSFORMERS

Part #	Description	In Season Price	Pre-Season Price
TT-TRANS-115/208/240-40	115, 208, 240 Volt Primary, 24 Volt Secondary 40VA transformer, Foot Mount	\$7.05	\$6.19
TT-75VA	115, 208, 240 Volt Primary, 24 Volt Secondary 75VA Transformer, Foot Mount	\$18.44	\$16.94
TT-75VA-MULTI	115, 208, 240, 460 Volt Primary, 24 Volt Secondary 75VA Transformer, Foot Mount	\$20.29	\$18.65

PRESSURE CONTROLS & SWITCHES

HEAD PRESSURE CONTROLS

Part #	Description	In Season Price	Pre-Season Price
P201-35150	50VA, 120/208/240V Primary; Uni	\$29.49	\$27.85
HT01AW230	60VA, 200/230V Primary; Foot	\$23.62	\$22.31
P251-0083H	10 Amp, Adjustable, 24V Input	\$94.12	\$88.89

PRESSURE SWITCHES

Part #	Description	In Season Price	Pre-Season Price
P70AA-118C	100-400 PSI Range	\$58.75	\$55.49
P100AP-4C	Opens 170; Closes 250	\$27.12	\$25.61
HK02ZB028	Lo PS; Close 67; Open 27; 48" Lead	\$24.37	\$23.02
HK02ZA438	Hi PS; Open 335; Close 235; 42" Ld	\$23.89	\$22.56
HK02ZA439	Hi PS; Open 426; Close 320; 48" Ld	\$20.50	\$19.37

CAPACITORS

RUN CAPACITORS



Part #	Description	In Season Price	Pre-Season Price
TT-CAP-3/370	OVAL CAP 3/370	\$1.96	\$1.78
TT-CAP-4/370	OVAL CAP 4/370	\$1.53	\$1.19
TT-CAP-4/440	OVAL CAP 4/440	\$1.75	\$1.36
TT-CAP-5/370	OVAL CAP 5/370	\$1.37	\$1.06
TT-CAP-5/440	OVAL CAP 5/440	\$1.59	\$1.23
TT-CAP-7.5/370	OVAL CAP 7.5/370	\$1.62	\$1.21
TT-CAP-7.5/440	OVAL CAP 7.5/440	\$1.98	\$1.50

RUN CAPACITORS (CONTINUED)

Part #	Description	In Season Price	Pre-Season Price
TT-CAP-10/370	OVAL CAP 10/370	\$1.86	\$1.38
TT-CAP-10/440	OVAL CAP 10/440	\$2.06	\$1.52
TT-CAP-12.5/370	OVAL CAP 12.5/370	\$2.61	\$1.98
TT-CAP-12.5/440	OVAL CAP 12.5/440	\$2.93	\$2.35
TT-CAP-15/370	OVAL CAP 15/370	\$2.61	\$2.07
TT-CAP-15/440	OVAL CAP 15/440	\$3.44	\$3.09
TT-CAP-20/370	OVAL CAP 20/370	\$3.22	\$2.72
TT-CAP-20/440	OVAL CAP 20/440	\$3.81	\$3.42
TT-CAP-25/370	OVAL CAP 25/370	\$3.59	\$3.34
TT-CAP-25/440	OVAL CAP 25/440	\$4.52	\$3.95
TT-CAP-30/440	OVAL CAP 30/440	\$5.29	\$4.65
TT-CAP-35/440	OVAL CAP 35/440	\$5.39	\$5.17
TT-CAP-40/440	OVAL CAP 40/440	\$6.25	\$5.63
TT-CAP-50/440	OVAL CAP 50/440	\$7.48	\$6.48
TT-CAP-55/440	OVAL CAP 55/440	\$7.55	\$6.49

DUAL OVAL CAPACITORS

Part #	Description	In Season Price	Pre-Season Price
TT-CAP-20/5/440	DUAL OVAL CAP 20/5/440	\$4.61	\$4.31
TT-CAP-25/5/440	DUAL OVAL CAP 25/5/440	\$6.07	\$5.49
TT-CAP-30/5/440	DUAL OVAL CAP 30/5/440	\$5.54	\$4.84
TT-CAP-35/5/370	DUAL OVAL CAP 35/5/370	\$4.73	\$3.71
TT-CAP-35/5/440	DUAL OVAL CAP 35/5/440	\$4.96	\$3.93
TT-CAP-35/7.5/440	DUAL OVAL CAP 35/7.5/440	\$7.14	\$6.20
TT-CAP-40/5/440	DUAL OVAL CAP 40/5/440	\$6.81	\$5.96
TT-CAP-45/5/370	DUAL OVAL CAP 45/5/370	\$7.30	\$6.32
TT-CAP-45/5/440	DUAL OVAL CAP 45/5/440	\$7.89	\$6.98
TT-CAP-45/7.5/440	DUAL OVAL CAP 45/7.5/440	\$8.55	\$7.85
TT-CAP-50/7.5/440	DUAL OVAL CAP 50/7.5/440	\$10.12	\$8.64

CAPACITORS



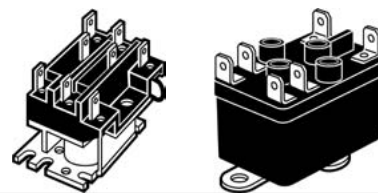
DUAL ROUND CAPACITORS

Part #	Description	In Season Price	Pre-Season Price
TT-CAP-25/5/440R	DUAL ROUND CAP 25/5/440	\$5.33	\$4.81
TT-CAP-25/7.5/440R	DUAL ROUND CAP 25/7.5/440	\$5.88	\$5.09
TT-CAP-30/5/370R	DUAL ROUND CAP 30/5/370	\$5.06	\$4.39
TT-CAP-30/5/440R	DUAL ROUND CAP 30/5/440	\$5.00	\$4.36
TT-CAP-30/7.5/370R	DUAL ROUND CAP 30/7.5/370	\$5.11	\$4.46
TT-CAP-35/5/370R	DUAL ROUND CAP 35/5/370	\$4.78	\$3.71
TT-CAP-35/5/440R	DUAL ROUND CAP 35/5/440	\$5.00	\$3.95
TT-CAP-35/7.5/370R	DUAL ROUND CAP 35/7.5/370	\$6.92	\$5.99
TT-CAP-35/7.5/440R	DUAL ROUND CAP 35/7.5/440	\$7.36	\$6.40
TT-CAP-40/5/370R	DUAL ROUND CAP 40/5/370	\$6.55	\$5.74
TT-CAP-40/5/440R	DUAL RND CAP 40/5/440	\$6.90	\$5.97
TT-CAP-40/7.5/440R	DUAL ROUND CAP 40/7.5/440	\$8.58	\$7.41
TT-CAP-45/5/370R	DUAL ROUND CAP 45/5/370R	\$7.23	\$6.36
TT-CAP-45/5/440R	DUAL ROUND CAP 45/5/440R	\$7.73	\$6.79
TT-CAP-45/7.5/370R	DUAL ROUND CAP 45/7.5/370	\$10.72	\$9.41
TT-CAP-45/7.5/440R	DUAL ROUND CAP 45/7.5/440R	\$7.90	\$6.94
TT-CAP-50/5/370R	DUAL ROUND CAP 50/5/370	\$8.29	\$7.03
TT-CAP-50/5/440R	DUAL ROUND CAP 50/5/440	\$8.64	\$7.38
TT-CAP-50/7.5/370R	DUAL ROUND CAP 50/7.5/370R	\$9.79	\$8.37
TT-CAP-55/5/440R	DUAL ROUND CAP 55/5/440	\$8.45	\$7.05
TT-CAP-55/7.5/370R	DUAL ROUND CAP 55/7.5/370	\$9.18	\$7.64
TT-CAP-55/7.5/440R	DUAL ROUND CAP 55/7.5/440R	\$9.73	\$8.11
TT-CAP-60/5/370R	DUAL ROUND CAP 60/5/370	\$9.41	\$8.21
TT-CAP-60/7.5/370R	DUAL ROUND CAP 60/7.5/370R	\$9.66	\$8.43
TT-CAP-80/5/370	DUAL OVAL CAP 80/5/370	\$11.72	\$10.53
TT-CAP-80/5/370R	DUAL ROUND CAP 80/5/370R	\$11.27	\$9.89
TT-CAP-80/7.5/370R	DUAL ROUND CAP 80/7.5/370R	\$13.60	\$12.91

UNIVERSAL CAPACITORS

Part #	Description	In Season Price	Pre-Season Price
TURBO 200	Universal Capacitor Up to 67.5 MFD	\$48.54	\$45.31
TURBO 200M	Universal Capacitor up to 12.5 MFD	\$7.33	\$6.84
TURBO 200X	Universal Capacitor up to 97.5 MFD	\$66.06	\$61.65

RELAYS



Part #	Description	In Season Price	Pre-Season Price
TT-90290	FAN RELAY	\$4.31	\$3.80
TT-90293	FAN RELAY	\$4.39	\$3.88
TT-90340	SWITCHING RELAY 24V COIL	\$5.88	\$4.62
TT-90370	RELAY SPST 24V COIL	\$5.50	\$4.39
TT-90380	RELAY SPDT 24V	\$5.38	\$4.32

TIME DELAYS

Part #	Description	In Season Price	Pre-Season Price
P284-2391	Delay on Make Adj, 0-10 Min. 19-288V	\$5.90	\$5.38
P284-2392	Delay on Break Adj, 0-10 Min. 19-288V	\$5.90	\$5.38

HARD & KICK STARTS

Part #	Description	In Season Price	Pre-Season Price
TT-5	HARD START KIT 1/2 - 5 HP	\$5.28	\$4.65
TT-6	HARD START KIT 1/2 - 10 HP	\$7.12	\$6.03
TT-KS1	KICKSTART KS1 3.5-5HP	\$38.59	\$34.19
TT-T05	KICKSTART TO5 1-3HP	\$32.92	\$29.16

FAN & LIMITS



Honeywell

FAN & LIMITS

Part #	Description	In Season Price	Pre-Season Price
L4064B2228	5" Insertion	\$69.97	\$65.30
L4064W1080	5" Insertion w/ heat assist	\$69.97	\$65.30
L4064B2236	8" Insertion	\$109.49	\$102.18
L4064W1098	8" Insertion w/ heat assist	\$107.50	\$100.32

IGNITORS

UNI-LINE[®]
Honeywell

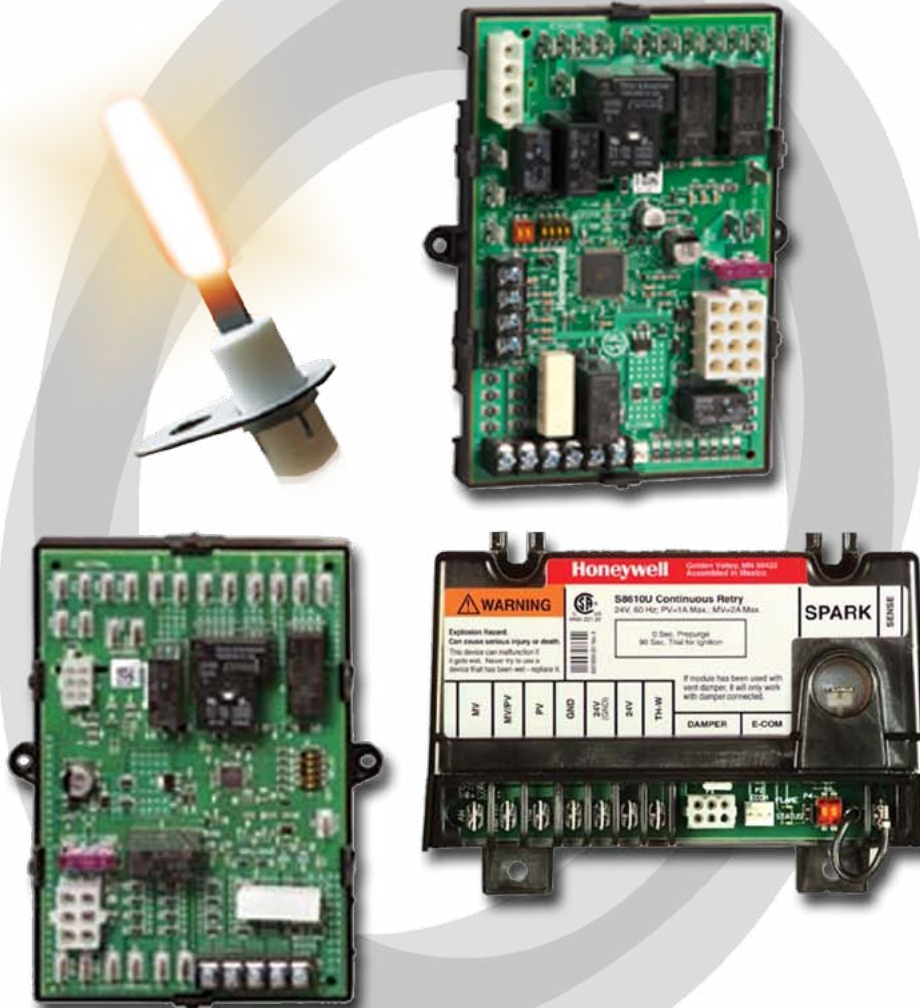
IGNITORS



Part #	Description	In Season Price	Pre-Season Price
Q3200U1004	Honeywell GloFLy Ignitor	\$27.43	\$25.60
Q3200U2002	Honeywell GloFLy Ignitor - 6 Pack	\$155.75	\$143.67
41-401N	Uni-Line Silicon Carbide Amana/Lennox	\$31.73	\$29.61
41-402N	Uni-Line Silicon Carbide Norton/Whirlpool	\$32.76	\$30.57
41-403N	Uni-Line Silicon Carbide Lennox/Norton	\$31.47	\$29.37
41-405N	Uni-Line Silicon Carbide Lennox/Norton	\$32.49	\$30.32
41-407N	Uni-Line Silicon Carbide Norton/Trane	\$32.11	\$29.97
41-408N	Uni-Line Silicon Carbide Lennox/Rheem/Trane	\$31.27	\$29.19
41-409N	Uni-Line Silicon Carbide Carrier/Norton	\$31.53	\$29.43
41-411N	Uni-Line Silicon Carbide Norton/Rheem	\$31.43	\$29.33
41-412N	Uni-Line Silicon Carbide Goodman/Heil/Norton	\$32.86	\$30.67

Honeywell UNIVERSAL SERVICE KIT

Y8427U9045



INCLUDES:

UNIVERSAL INTERMITTENT PILOT
IGNITION MODULE (S8610U3009)

UNIVERSAL FAN TIMER (ST9120U1011)

UNIVERSAL INTEGRATED FURNACE
CONTROL (S9200U1000)

GLOWFLY® UNIVERSAL HOT SURFACE
IGNITER 6-PACK (Q3200U2002)

PLUS A FREE HONEYWELL UNIVERSAL
TOOL & A HONEYWELL RE-STOCKING
REMINDER NOTEPAD

**Receive DOUBLE
ContractorPRO
points!**

Pre-Season Price
\$429.99

In-Season Price \$462.24

IGNITION MODULES

Honeywell *IGNITION MODULES*



Part #	Description	In Season Price	Pre-Season Price
S8610U3009	Universal Intermittent Pilot Ignition Control	\$105.86	\$98.79
S8910U1000	Universal Hot Surface Ignition Module	\$107.39	\$100.22
S9200U1000	Universal Integrated Control Board	\$95.97	\$89.56
Y8610U6006	Universal IP Retro-Fit Ignition System	\$226.20	\$211.10
50M56U-843	Single Stage HSI Integrated Furnace Control Kit	\$110.51	\$103.13
21V51U-843	2 Stage HIS Integrated Furnace Control Kit	\$163.95	\$153.00

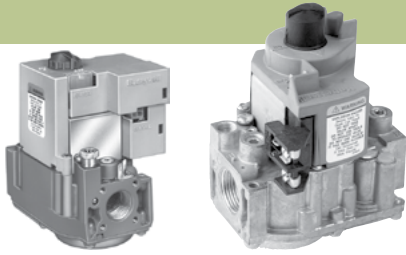
GAS VALVES

Robertshaw.

GAS VALVES

Part #	Description	In Season Price	Pre-Season Price
720-400	24 v Dual Valve 1/2 x 3/4 w/ LP Kit	\$122.06	\$113.92
720-402	Same as 720-400 w/ 1/2 side tap	\$72.87	\$68.01
720-406	24 v Dual Valve 3/4 x 3/4 w/ LP Kit	\$81.99	\$76.52
720-079	Universal Electronic Ignition HIS, 1/2x3/4 w/LP	\$92.59	\$86.41
700-400	24 v Combo Gas Valve 1/2 x 3/4	\$128.01	\$119.48
700-402	Same as 700-400 w/ side tap	\$94.94	\$88.61
720-474	24 v Step Opening 1/2 x 1/2	\$128.01	\$119.48
700-504	Millivolt Combo Valve	\$135.30	\$126.28
710-205	Hydraulic Action Valve	\$134.49	\$125.52

GAS VALVES



GAS VALVES

Honeywell

Part #	Description	In Season Price	Pre-Season Price
VR8200A2744	Universal Std Gas Valve 1/2" Outlet	\$73.87	\$68.14
VR8300A4516	Universal Std Gas Valve 3/4" Outlet	\$90.43	\$83.42
VR8245M2530	Intermittent Pilot Gas Valve 1/2" Outlet	\$92.18	\$85.03
VR8345M4302	Intermittent Pilot Gas Valve 3/4" Outlet	\$94.46	\$87.13
SV9501M2528	Smart Valve	\$158.03	\$145.77
Q3400A1024	Pilot Assembly	\$52.20	\$48.15

THERMOCOUPLES & PILOTS



THERMOCOUPLES & PILOTS

Johnson Controls

Honeywell

Part #	Description	In Season Price	Pre-Season Price
Q340A1074	24" Thermocouple	\$6.81	\$6.28
Q340A1082	30" Thermocouple	\$7.07	\$6.52
Q340A1090	36" Thermocouple	\$7.29	\$6.72
Q313A1170	750 Millivolt Thermopile 35" Leads W/PG9 Adpt.	\$39.38	\$36.32
K19AT-24H	Super Slim Jim Thermocouple -24"	\$5.27	\$4.92
K19AT-30H	Super Slim Jim Thermocouple -30"	\$5.66	\$5.28
K19AT-36H	Super Slim Jim Thermocouple - 36"	\$6.04	\$5.64
J999MHA-2H	L Channel Mounting Bracket	\$17.57	\$16.40
J999MKA-2H	Shell	\$17.16	\$16.01
J999MYA-2H	Y Channel	\$17.36	\$16.20

GAS CONNECTORS & BALL VALVES

GAS CONNECTORS & BALL VALVES



Part #	Description	In Season Price	Pre-Season Price
30-3132-12	Gas Connector - 12"	\$6.35	\$5.90
30-3132-18	Gas Connector - 18"	\$7.74	\$7.19
30-3132-24	Gas Connector - 24"	\$8.88	\$8.24
30-3132-36	Gas Connector - 36"	\$10.14	\$9.41
92-3232	1/2" Gas Ball Valve	\$6.14	\$5.70
92-4242	3/4" Gas Ball Valve	\$9.48	\$8.80
MX-325-3L 1/2" 2#	W-12A09 LIMITER 1/2" GA	\$21.05	\$19.54
325-3 1/2" 10#	REGULATOR 1/2" W/LIMITER	\$19.69	\$18.29

BLACK PIPE & FITTINGS



BLACK PIPE & FITTINGS



Part #	Description	In Season Price	Pre-Season Price
583-000	1/2 Nipple Tote Pack	\$71.57	\$64.42
583-001	1/2 Close Nipple - 25/ctn	\$0.63	\$0.57
583-015	1/2 X 1 1/2" BLK NIP	\$0.63	\$0.57
583-020	1/2 X 2" BLK NIP	\$0.63	\$0.57
583-025	1/2 X 2 1/2" BLK	\$0.76	\$0.68
583-030	1/2 X 3" BLK NIP	\$0.76	\$0.68
583-035	1/2 X 3 1/2" BLK NIP	\$0.91	\$0.82
583-040	1/2 X 4" BLK NIP	\$0.91	\$0.82
583-045HC	1/2 X 4 1/2" BLK NIP	\$1.06	\$0.95
583-050HC	MUELLER 1/2 X 5"	\$1.06	\$0.95
583-055HC	MUELLER 1/2 5 1/2"	\$1.19	\$1.07
583-060	MUELLER 1/2 X 6"	\$1.19	\$1.07
583-080	MUELLER 1/2 X 8"	\$2.13	\$1.92
583-120HC	MUELLER 1/2 X 12"	\$3.04	\$2.73

BLACK PIPE & FITTINGS



BLACK PIPE & FITTINGS (CONTINUED)

Part #	Description	In Season Price	Pre-Season Price
583-180HC	MUELLER 1/2 X 18"	\$4.74	\$4.27
583-240HC	MUELLER 1/2 X 24"	\$6.19	\$5.57
583-360HC	MUELLER 1/2 X 36"	\$8.56	\$7.70
520-203	MUELLER 1/2 BLK ELBOW 45D	\$1.35	\$1.22
520-003	MUELLER 1/2 BLK 90D	\$0.83	\$0.75
520-303	MUELLER 3/8FL X 1/2	\$1.72	\$1.55
521-203	1/2 BLACK COUPLING	\$1.13	\$1.02
521-403	MUELLER 1/2"BLACK CAP	\$0.83	\$0.75
520-603	1/2 Tee - 40/ctn	\$1.07	\$0.97
521-703	MUELLER 1/2"BLACK UNION	\$3.67	\$3.30
521-803	MUELLER 1/2 BLK PLUG	\$0.76	\$0.68
521-363	1 1/4x1/2 Reducing Coupling	\$2.96	\$2.67
521-353	1 x 1/2 Reducing Coupling	\$2.06	\$1.85
521-354	1 x 3/4 Reducing Coupling	\$2.06	\$1.85
521-343	MUELLE BLK RDCR	\$1.31	\$1.18
584-001	MUELLER 3/4 X CLOSE	\$0.72	\$0.65
584-015	MUELLER 3/4 X 1 1/2"	\$0.78	\$0.70
584-020	MUELLER 3/4 X 2" BL	\$0.78	\$0.70
584-025	MUELLER 3/4 X 2 1/2"	\$0.89	\$0.80
584-030	MUELLER 3/4 X 3" BL	\$0.89	\$0.80
584-035	MUELLER 3/4 X 3 1/2"	\$1.09	\$0.98
584-045HC	MUELLER 3/4 X 4 1/2"	\$1.37	\$1.23
584-050HC	MUELLER 3/4 X 5"	\$1.37	\$1.23
584-055HC	MUELLER 3/4 X 5 1/2"	\$1.56	\$1.40
584-060HC	MUELLER 3/4 X 6" BL	\$1.56	\$1.40
584-120HC	3/4 x 12 Nipple	\$3.37	\$3.03
584-180HC	MUELLER 3/4 X 18" B	\$5.85	\$5.27
584-240HC	MUELLER 3/4 X 24" B	\$7.48	\$6.73
520-204	MUELLER 3/4" BLK 45D	\$1.65	\$1.48
520-004	MUELLER 3/4" BLK 90D	\$1.00	\$0.90
520-304	3/4 90 Degree Street	\$1.69	\$1.52
521-204	3/4 Coupling	\$1.31	\$1.18
521-404	MUELLER 3/4"BLACK CAP	\$1.13	\$1.02
521-704	MUELLER 3/4" BLACK UNION	\$4.37	\$3.93
521-804	MUELLER 3/4 BLK PLUG	\$0.76	\$0.68

THERMOSTATS



Part #	Description	In Season Price	Pre-Season Price
TT-N-411	TOPTECH 1H/1C NP TSTAT;	\$19.17	\$17.92
TT-N-421	TOPTECH 2H/1C NP HP;TSTAT	\$21.84	\$20.23
TT-P-411	TOPTECH 1H/1C PROG TSTAT;	\$22.92	\$21.75
TT-P-421	TOPTECH 2H/1C PROG HP;TSTAT	\$27.21	\$26.16
TT-N-701	1 HEAT/1 COOL NP TSTAT	\$24.99	\$23.06
TT-P-705	1 HEAT/1 COOL 5+1+1 TSTAT	\$27.96	\$25.79
TT-N-721	2 HEAT/1 COOL NP TSTAT	\$33.83	\$31.21
TT-N-751H	3 HEAT/2 COOL NP TSTAT HUMIDITY	\$57.91	\$54.65
TT-S-855	3 HEAT/2 COOL 7 DAY TSTAT AUTO	\$58.66	\$54.11
TT-S-915	2 HEAT/2 COOL 7 DAY TSTAT AUTO	\$80.82	\$74.56
TT-S-955W	3 HEAT/2 COOL 7 DAY TSTAT AUTO	\$142.67	\$131.62
TT-S-955WH	3 HEAT/2 COOL 7 DAY TSTAT AUTO	\$157.02	\$144.86
TT-ROS-250W	WIRELESS OUTDOOR SENSOR	\$41.05	\$37.87
TT-RIS-251W	WIRELESS INDOOR SENSOR	\$57.18	\$52.75

TEMP-STAT TEMPORARY HEATING ONLY CONSTRUCTION STAT



Part #	Description	In Season Price	Pre-Season Price
TS-60	Dedicated 60 Degrees	\$6.77	\$6.29
TS-65	Dedicated 65 Degrees	\$6.77	\$6.29

THERMOSTATS



Honeywell

Part #	Description	In Season Price	Pre-Season Price
TH4110D1007	Focus Pro 4000 1H/1C	\$34.42	\$31.75
TH5110D1006	Focus Pro 5000 1H/1C Standard Display	\$37.53	\$34.62
TH5110D1022	Focus Pro 5000 1H/1C Large Display	\$44.00	\$40.59
TH6110D1005	Focus Pro 6000 1H/1C Standard Display	\$55.86	\$51.53
TH6110D1021	Focus PRO 6000 1H/1C Large Display	\$61.09	\$56.35
TH8110U1003	VisionPro 8000 Touch Screen 1H/1C 7-Day Programmable	\$134.31	\$123.89
TH8320U1008	VisionPro 8000 Touch Screen 3H/2C 7-Day Programmable	\$149.24	\$137.66
YTH9421C1010	VisionPro 9000 IAQ 4H/2C T/Stat/Module/Sensor	\$226.46	\$208.89



THE ROUND®

Honeywell

Part #	Description	In Season Price	Pre-Season Price
T87K1007	Round Heat Only Thermostat	\$26.28	\$24.24
T87N1000	Round 1H/1C 40-90F Premier White	\$38.48	\$35.49
T8775C1005	Round 7-Day Programmable 1H/1C Premier White	\$41.63	\$38.40

WIRELESS THERMOSTAT KITS



Honeywell

Part #	Description	In Season Price	Pre-Season Price
YTH6320R1001	FocuPro Wireless Kit Y-Pack (T/Stat, Module, Return Air Sensor)	\$198.79	\$183.37

THERMOSTAT ACCESSORIES

Honeywell

Part #	Description	In Season Price	Pre-Season Price
C7089U1006	Wired Outdoor Temperature Sensor	\$20.71	\$19.10
C7089R1013	Wireless Outdoor Temperature Sensor	\$58.13	\$53.62

THERMOSTAT WIRE & WIRE NUTS

THERMOSTAT WIRE



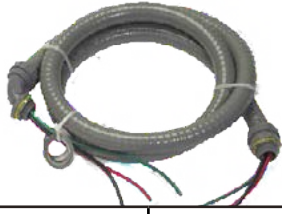
Part #	Description	In Season Price	Pre-Season Price
TW-18G500-2R	2 Wire/18 Ga./500 Ft Roll	Call	\$52.00
TW-18G500-3R	3 Wire/18 Ga./500 Ft Roll	Call	\$78.96
TW-18G250-4R	4 Wire/18 Ga./250 Ft Roll	Call	\$53.49
TW-18G250-5R	5 Wire/18 Ga./250 Ft Roll	Call	\$56.05
TW-18G250-6R	6 Wire/18 Ga./250 Ft Roll	Call	\$77.06
TW-18G250-8R	8 Wire/18 Ga./250 Ft Roll	Call	\$85.04
TW-18G250-10R	10 Wire/18 Ga./250 Ft Roll	Call	\$120.62
TW-18G250-12R	12 Wire/18 Ga./250 Ft Roll	Call	\$151.04

TopTech
comfort | excellence

WIRE NUTS

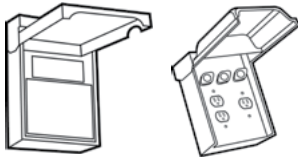
Part #	Description	In Season Price	Pre-Season Price
TT-WNB	BLUE WIRE NUTS 100/JAR	\$3.68	\$3.07
TT-WNO	ORANGE WIRE NUTS 100/JAR	\$5.34	\$4.55
TT-WNR	RED WIRE NUTS 50/JAR	\$9.12	\$8.16
TT-WNY	YELLOW WIRE NUTS 100/JAR	\$5.96	\$5.17

WHIPS, DISCONNECT & FUSES



WHIPS (ELECTRICAL)

Part #	Description	In Season Price	Pre-Season Price
6-12-4	1/2" X 4' #10 Wire W/Metal Fitting 1-Straight/ 1- 90 Elbow	\$11.06	\$10.20
6-12-6	1/2" X 6' #10 Wire W/Metal Fitting 1-Straight/1-90 Elbow	\$13.56	\$12.50
6-34-6	3/4" X 6' #8 Wire W/Metal Fitting 1-Straight/1-90 Elbow	\$18.88	\$17.40



DISCONNECTS

Part #	Description	In Season Price	Pre-Season Price
TT-60AMP-F	60 AMP Fused Disconnect	\$13.51	\$12.38
TT-60AMP-NF	60 AMP Non-Fused Disconnect	\$10.50	\$9.61
TT-30AMP-F	30 AMP Fused Disconnect	\$13.51	\$12.38
SSU	Bussman Fuse	\$8.39	\$7.88
SSY	Bussman Fuse	\$9.24	\$8.67



FUSES

Part #	Description	In Season Price	Pre-Season Price
FLNR10	10 amp-10/pk Cartridge Fuse, Dual	\$2.22	\$2.00
FLNR15	15 amp-10/pk Cartridge Fuse, Dual	\$2.22	\$2.00
FLNR20	20 amp-10/pk Cartridge Fuse, Dual	\$2.22	\$2.00
FLNR30	30 amp-10/pk Cartridge Fuse, Dual	\$3.98	\$3.58
FLNR40ID	40 amp-10/pk Cartridge Fuse, Dual	\$3.98	\$3.58
TOO15	Dual Ele Time Delay;Plug Fuse 4/pk	\$2.37	\$2.13
TOO30	Dual Ele Time Delay;Plug Fuse 4/pk	\$3.04	\$2.73
SOO15	Dual Ele Time Delay;Plug Fuse 4/pk	\$2.57	\$2.32
OATO 003.V	3 amp Fast Acting Fuse - 5/pk	\$0.33	\$0.30
OATO 005.V	5 amp Fast Acting Fuse - 5/pk	\$0.33	\$0.30

TOPTECH SUPPLIES



SUPPLIES

Part #	Description	In Season Price	Pre-Season Price
TT-TERM-77250	TOPTECH DBLE MALE-FEM ADAP PIGGYBACK 30 PK	\$8.69	\$7.58
TT-TERM-7MMF250	TOPTECH DBLE MALE-FEM ADAP FLAT PACK 30 PK	\$8.44	\$7.37
TT-TERM-8R0250	TOPTECH HD RED RING 8AWG 1/4 20 PK	\$8.88	\$7.74
TT-TERM-BBS	TOPTECH BLUE BUTT CONN 16-14AWG 100 PK	\$8.73	\$7.62
TT-TERM-BDQM250	TOPTECH BLUE QK DISC MALE 16-14AWG 100 PK	\$8.65	\$7.54
TT-TERM-BFFI250	TOPTECH BLUE FEM FLAG QK DISC INSL 30 PK	\$7.92	\$6.91
TT-TERM-BQDF187	TOPTECH BLUE QK DISC FEMALE 16-14AWG 100 PK	\$7.88	\$6.87
TT-TERM-BQDF250	TOPTECH BLUE QK DISC FEMALE 16-14AWG 100 PK	\$8.08	\$7.05
TT-TERM-BQDFFI250	TOPTECH BLUE QK DISC FEMALE INSL 16-14AWG 40 PK	\$4.65	\$4.05
TT-TERM-BQDFM	TOPTECH BLUE MULTI-STACK DISC 16-14AWG 30 PK	\$3.96	\$3.46
TT-TERM-BR10	TOPTECH BLUE STUD 16-14AWG #10 100 PK	\$7.00	\$6.11
TT-TERM-BS10	TOPTECH BLUE SPADE 16-14AWG #10 100 PK	\$6.46	\$5.64
TT-TERM-BS6	TOPTECH BLUE SPADE 16-14AWG #6 100 PK	\$6.46	\$5.64
TT-TERM-CC0375	TOPTECH CABLE CLAMP 3/8 40 PK	\$3.52	\$3.07
TT-TERM-CES1810	TOPTECH CLOSED END CONN 18-10AWG 40 PK	\$8.69	\$7.58
TT-TERM-CES2214	TOPTECH CLOSED END CONN 22-14AWG 50 PK	\$7.92	\$6.91
TT-TERM-COM1208	TOPTECH COMPRESSOR TERM 12-8AWG	\$8.69	\$7.58
TT-TERMKIT/TOOL	TERMKIT 180PC W/ TOOL	\$18.75	\$17.75
TT-TERMKITDELUXE	TERMKIT 570PC DELUXE	\$43.21	\$40.89
TT-TERM-LEADS-10	TOPTECH COMPRESSOR HOOK UP LEAD KIT 10AWG	\$7.48	\$6.53
TT-TERM-RBS	TOPTECH RED BUTT CONN 22-18AWG 100 PK	\$7.48	\$6.53
TT-TERM-RQDF187	TOPTECH RED QK DISC FEMALE 22-18AWG 100 PK	\$6.88	\$6.00
TT-TERM-RQDF250	TOPTECH RED QK DISC FEMALE 22-18AWG 100 PK	\$8.69	\$7.58
TT-TERM-RQDFFI250	TOPTECH RED QK DISC FEMALE FULL INSL 22-18AWG 40 PK	\$8.68	\$7.58
TT-TERM-RQDFM	TOPTECH RED MULTI-STACK DISC 22-18AWG 30 PK	\$4.04	\$3.53
TT-TERM-RQDM250	TOPTECH RED QK DISC MALE 22-18AWG 100 PK	\$7.88	\$6.87
TT-TERM-RQDMFI250	TOPTECH RED QK DISC MALE FULL INSL 22-18AWG 40 PK	\$7.06	\$6.16
TT-TERM-RS10	TOPTECH RED SPADE 22-18AWG #10 100 PK	\$6.46	\$5.64
TT-TERM-YBS	TOPTECH YELLOW BUTT CONN 12-10AWG 75 PK	\$8.73	\$7.62

SUPPLIES (CONTINUED)



Part #	Description	In Season Price	Pre-Season Price
TT-TERM-YQDF250	TOPTECH YELLOW QK DISC FEMALE 12-10AWG 75 PK	\$8.69	\$7.58
TT-TERM-YQDFFI250	TOPTECH YELLOW QK DISC FEMALE INSL 12-10AWG 40 PK	\$6.04	\$5.27
TT-TERM-YS10	TOPTECH YELLOW SPADE 12-10AWG #10 75 PK	\$10.19	\$8.89
TT-ELECTAPE	ELECTRICAL TAPE	\$1.02	\$0.90
TT-ELECTAPE-6	ELECTRICAL TAPE 6 PK	\$5.86	\$5.20
TT-CRIMPTOOL	CRIMPING TOOL	\$6.58	\$5.75
TT-B2	2" CHIP BRUSH	\$0.35	\$0.28
TT-CABLETIE11B	CABLETIE 11 IN 100PC BLK	\$5.32	\$5.16
TT-CABLETIE11N	CABLETIE 11 IN 100PC NAT	\$6.03	\$5.83
TT-CABLETIE14B	CABLETIE 14 IN 100PC BLK	\$6.95	\$6.76
TT-CABLETIE14N	CABLETIE 14 IN 100PC NAT	\$7.32	\$7.11
TT-CABLETIE24B	CABLETIE 24 IN 50PC BLK	\$13.26	\$11.60
TT-CABLETIE24N	CABLETIE 24 IN 50PC NAT	\$12.26	\$10.73
TT-CABLETIE7B	CABLETIE 7 IN 100PC BLK	\$3.49	\$3.32
TT-CABLETIE7N	CABLETIE 7 IN 100PC NAT	\$3.42	\$3.24
TT-CABLETIEMOUNT11B	CABLETIE MOUNT 11" IN 25PC BLK	\$4.03	\$3.91
TT-CABLETIEMOUNT11N	CABLETIE MOUNT 11" IN 25PC NAT	\$4.11	\$3.97
TT-CABLETIETUBE/TOOL	CABLETIE TUBE ASST CLR W/TOOL	\$20.57	\$18.00
TT-CABLETIETUBE650B	CABLETIE TUBE 650PC BLACK	\$15.43	\$13.50
TT-CABLETIETUBE650N	CABLETIE TUBE 650PC NATURAL	\$15.43	\$13.50
TT-HOSECLAMPS	HOSE CLAMP ASSORTMENT 30PC	\$12.20	\$10.89
TT-VDCLAMP-1/2	TOPTECH 1/2" VINYL DIPPED CLAMP 10 PACK	\$3.29	\$2.87
TT-VDCLAMP-3/4	TOPTECH 3/4" VINYL DIPPED CLAMP 10 PACK	\$3.52	\$3.07

CONDENSATE PUMPS



CONDENSATE PUMPS & SAFETY SWITCHES

Part #	Description	In Season Price	Pre-Season Price
TT-CP-20T	TopTech Condensate Pump 20' Lift 115VAC	\$41.98	\$37.60
SOS-1	Safety Overflow Switch	\$15.53	\$13.94
TT-SS1	TopTech 3/4" Safety Overflow Switch	\$13.99	\$12.76
TT-SS2	TopTech Auxillary Drain Pan Switch	\$11.94	\$10.88

VINYL TUBING



VINYL TUBING

Part #	Description	In Season Price	Pre-Season Price
CVT38	3/8" Clear Vinyl Tubing 100' Roll	\$8.36	\$8.07
CVT12	1/2" Clear Vinyl Tubing 100' Roll	\$12.56	\$12.12
CVT58	5/8" Clear Vinyl Tubing 100' Roll	\$18.20	\$17.57
TT-VDCLAMP-1/2	TOPTECH 1/2 IN VINYL DIPPED CLAMP 10-PK	\$2.26	\$2.18
TT-VDCLAMP-3/4	TOPTECH 3/4 IN VINYL DIPPED CLAMP 10-PK	\$3.52	\$3.07



PVC FITTINGS



Part #	Description	In Season Price	Pre-Season Price
TT-PVC-401007A	3/4 PVC TEE SSS	\$2.54	\$2.23
TT-PVC-406007A	3/4 PVC 90 ELBOW	\$1.79	\$1.57
TT-PVC-417007A	3/4 PVC 45 ELBOW	\$1.75	\$1.54
TT-PVC-429007A	3/4 PVC CPL S X S	\$1.35	\$1.20
TT-PVC-436007A	3/4 PVC S X MPT	\$1.68	\$1.47
TT-PVC-447007A	3/4" Cap	\$1.26	\$1.11
5934	2" Coupling	\$0.65	\$0.57
PVC-05877	2" 90 Degree Elbow	\$1.62	\$1.41
5872	2" 90 Degree Long Radius	\$2.65	\$2.32
5886	2" 45 Degree Elbow	\$1.44	\$1.25
PVC-06404	2" Tee	\$5.00	\$4.37
429-025	2.5" Coupling	\$1.55	\$1.35
406-025	2.5" 90 Degree Elbow	\$3.55	\$3.10
5935	3" Coupling	\$2.27	\$1.98
5878	3" 90 Degree Elbow	\$4.75	\$4.14
5873	3" 90 Degree Long Radius	\$6.25	\$5.46
05887	3" 45 Degree Elbow	\$4.25	\$3.71
PVC-06405	3" Tee	\$14.56	\$12.71
437-292	2.5" x 2" Reducer	\$1.40	\$1.22
437-339	2.5" x 3" Reducer	\$2.05	\$1.79
489-007	3/4 PVC PTrap	\$0.71	\$0.62

PVC CEMENT

Part #	Description	In Season Price	Pre-Season Price
TT-PVC-CEMENT-P	Purple - Up to 300 Joint Connections	\$7.13	\$6.24
TT-PVC-CEMENT-C	Clear - Up to 300 Joint Connections	\$7.13	\$6.24

CONCENTRIC TERMINATIONS

Part #	Description	In Season Price	Pre-Season Price
KGAVT0701CVT	3" Concentric Vent Kit	\$29.33	\$27.50
KGAVT0801CVT	2" Concentric Vent Kit	\$37.27	\$34.94



PVC PIPE & HANGERS



Part #	Description	In Season Price	Pre-Season Price
50830	2" X 10' Pipe PVC	\$9.64	\$9.00
50840	3" x 10' Pipe PVC	\$20.64	\$19.27
PVC-3/4-40	3/4" x 10' Schedule 40	\$5.15	\$4.72
515-J2000	2" Adj Swivel J-Hook Hanger	\$1.13	\$1.03
515-J3000	3" Adj Swivel J-Hook Hanger	\$1.33	\$1.22
710-A1710	30 Ga Galvanized Strap 3/4" x 10'	\$1.53	\$1.40

SMOKE DETECTOR

Part #	Description	In Season Price	Pre-Season Price
SS-D4120	Smoke Detector w/Photoelectric Head	\$95.71	\$89.33
SS-DST1.5	1.5' Sampling Tube	\$6.60	\$5.50
SS-DST3	3' Samping Tube	\$9.00	\$7.50
SS-DST5	5' Sampling Tube	\$11.50	\$9.58



- 24 VAC/DC or 120/220 VAC Operation
- Air Velocity ranging from 300-400 FPM
- Equipped with a DPDT Auxiliary Relay





COPPER FITTINGS

Part #	Description	In Season Price	Pre-Season Price
TT-1/4CC	1/4" COUPLING	\$3.45	\$3.04
TT-3/8CC	3/8" COUPLING	\$3.50	\$3.08
TT-1/2CC	1/2" COUPLING	\$3.52	\$3.10
TT-5/8CC	5/8" COUPLING	\$3.77	\$3.32
TT-3/4CC	3/4" COUPLING	\$5.16	\$4.54
TT-7/8CC	7/8" COUPLING	\$7.59	\$6.68
TT-1 1/8CC	1 1/8" COUPLING	\$13.89	\$12.22
W03005	1/4" 45 Degree Elbow	\$3.50	\$3.08
W03012	3/8" 45 Degree Elbow	\$3.52	\$3.10
W03021	1/2" 45 Degree Elbow	\$2.91	\$2.56
W03026	5/8" 45 Degree Elbow	\$1.66	\$1.46
W03030	3/4" 45 Degree Elbow	\$4.09	\$3.60
W03034	7/8" 45 Degree Elbow	\$4.07	\$3.58
W03044	1 1/8" 45 Degree Elbow	\$4.34	\$3.82
TT-3/890CELR	3/8" 90 Degree LR Elbow	\$6.77	\$5.96
TT-1/290CELR	1/2" 90 Degree LR Elbow	\$6.77	\$5.96
TT-5/890CELR	5/8" 90 Degree LR Elbow	\$7.82	\$6.88
TT-3/490CELR	3/4" 90 Degree LR Elbow	\$14.34	\$12.62
TT-7/890CELR	7/8" 90 Degree LR Elbow	\$19.55	\$17.20
TT-1 1/890CELR	1 1/8" 90 Degree LR Elbow	\$16.95	\$14.92
TT-1 3/890CELR	1 3/8" 90 Degree LR Elbow	\$28.66	\$25.22
TT-3/890CELRST	3/8" 90 Degree LR Street	\$9.14	\$8.04
TT-1/290CELRST	1/2" 90 Degree LR Street	\$11.36	\$10.00
TT-3/490CELRST	3/4" 90 Degree LR Street	\$14.34	\$12.62
TT-5/890CELRST	5/8" 90 Degree LR Street	\$9.14	\$8.04
TT-7/890CELRST	7/8" 90 Degree LR Street	\$19.55	\$17.20
TT-1 1/890CELRST	1 1/8" 90 Degree LR Street	\$17.59	\$15.48

LINE SETS

Part #	Description	In Season Price	Pre-Season Price
LS-3/8X5/8X3/8X25	3/8 x 5/8 x 3/8 -25 Feet	Call	\$76.99
LS-3/8X5/8X3/8X30	3/8 x 5/8 x 3/8 -30 Feet	Call	\$88.99
LS-3/8X5/8X3/8X35	3/8 x 5/8 x 3/8 -35 Feet	Call	\$102.99
LS-3/8X5/8X3/8X50	3/8 x 5/8 x 3/8 -50 Feet	Call	\$125.99
LS-3/8X3/4X3/8X20	3/8 x 3/4 x 3/8 - 20 Feet	Call	\$71.99
LS-3/8X3/4X3/8X25	3/8 x 3/4 x 3/8 - 25 Feet	Call	\$80.99
LS-3/8X3/4X3/8X30	3/8 x 3/4 x 3/8 - 30 Feet	Call	\$94.99
LS-3/8X3/4X3/8X35	3/8 x 3/4 x 3/8 - 35 Feet	Call	\$107.99
LS-3/8X3/4X3/8X40	3/8 x 3/4 x 3/8 - 40 Feet	Call	\$122.99
LS-3/8X3/4X3/8X50	3/8 x 3/4 x 3/8 - 50 Feet	Call	\$144.99
LS-3/8X7/8X3/8X25	3/8 x 7/8 x 3/8 -25 Feet	Call	\$104.99
LS-3/8X7/8X3/8X30	3/8 x 7/8 x 3/8 -30 Feet	Call	\$122.99
LS-3/8X7/8X3/8X35	3/8 x 7/8 x 3/8 -35 Feet	Call	\$140.99
LS-3/8X7/8X3/8X40	3/8 x 7/8 x 3/8 -40 Feet	Call	\$159.99
LS-3/8X7/8X3/8X50	3/8 x 7/8 x 3/8 -50 Feet	Call	\$188.99
LS-3/8X1-1/8X3/8X25	3/8 x 1-1/8 x 3/8 - 25 Feet	Call	\$151.99
LS-3/8X11/8X3/8X50	3/8 x 1-1/8 x 3/8 - 50 Feet	Call	\$272.99

INSULATION

Part #	Description	In Season Price	Pre-Season Price
TI-5/8x3/8x6	6 Feet - 5/8x3/8	\$1.85	\$1.63
TI-3/4x3/8x6	6Feet - 3/4x3/8	\$1.95	\$1.72
TI-7/8x3/8x6	6Feet - 7/8x3/8	\$2.05	\$1.81
TI-1-1/8x3/8x6	6 Feet -11/8x3/8	\$2.33	\$2.06
R373PTB1/2	1/2 Pint Isulation Adhesive	\$6.20	\$5.47

SOFT COPPER

Part #	Description	In Season Price	Pre-Season Price
REF-50X1/4	1/4" X 50' Roll - 10/carton	\$36.93	\$33.47
REF-50X5/16	5/16" x 50' Roll - 10/carton	\$47.27	\$42.84
REF-50X3/8	3/8" X 50' Roll - 10/carton	\$50.22	\$45.52
REF-50X1/2	1/2" x 50' Roll - 5/carton	\$70.90	\$64.26
REF-50X5/8	5/8" x 50' Roll - 5/carton	\$97.49	\$88.35
REF-50X3/4	3/4" x 50' Roll - 3/carton	\$116.69	\$105.76
REF-50X7/8	7/8" x 50' Roll - 3/carton	\$175.78	\$159.30
REF-50X1-1/8	1 1/8" x 50' Roll - 1/carton	\$255.54	\$231.59

ACR COPPER

Part #	Description	In Season Price	Pre-Season Price
ACR-20x3/8	3/8" x 20' ACR Copper	\$24.29	\$20.00
ACR-20x1/2	1/2" x 20' ACR Copper	\$35.71	\$29.41
ACR-20x5/8	5/8" x 20' ACR Copper	\$44.29	\$36.47
ACR-20x3/4	3/4" x 20' ACR Copper	\$62.86	\$51.76
ACR-20x7/8	7/8" x 20' ACR Copper	\$68.57	\$56.47
ACR-20x1-1/8	1 1/8" x 20' ACR Copper	\$100.00	\$82.35
ACR-20x1-3/8	1 3/8" x 20' ACR Copper	\$134.29	\$110.59
ACR-20x1-5/8	1 5/8" x 20' ACR Copper	\$172.86	\$142.35

ACCESS VALVES & FITTINGS

Part #	Description	In Season Price	Pre-Season Price
TT-AVC1	Access Valve Core Only (10 pack)	\$1.50	\$1.37
TT-AVX2	1/8" Access Valve (10 pack)	\$12.38	\$9.74
TT-AVX3	3/16" Access Valve (10 pack)	\$13.36	\$10.08
TT-AVX4	1/4" Access Valve (10 pack)	\$13.89	\$10.25
TT-AVX6	3/8" Access Valve (10 pack)	\$16.52	\$11.11
TT-QC4	Access Valve Cap (10 pack)	\$4.69	\$4.08

LINE DRIERS



LINE DRIERS



Part #	Description	In Season Price	Pre-Season Price
TT-LLD083S	3/8S 8 CU LIQUID LINE	\$8.29	\$6.97
TT-LLD163S	3/8S 16 CU LIQUID LINE	\$10.75	\$8.96
TT-LLDBF083S	3/8S 8CU BI-FLOW	\$15.82	\$14.18
TT-LLDBF163S	3/8S 16 CU BI-FLOW	\$19.63	\$16.78
TT-SLD165S	5/8S 16 CU SUCTION LINE	\$17.37	\$14.78
TT-SLD166S	3/4S 16 CU SUCTION LINE	\$18.25	\$15.44
TT-SLD167S	7/8S 16 CU SUCTION LINE	\$19.31	\$16.26
TT-SLD305S	5/8S 30 CU SUCTION LINE	\$24.17	\$20.65
TT-SLD306S	3/4S 30 CU SUCTION LINE	\$26.91	\$22.99
TT-SLD307S	7/8S 30 CU SUCTION LINE	\$28.51	\$24.35
TT-SLD309S	1 1/8 30 CU SUCTION LINE	\$30.09	\$25.69
TT-SG38	3/8" SIGHT GLASS	\$11.39	\$9.42



FACTORY AUTHORIZED DRIERS

Part #	Description	In Season Price	Pre-Season Price
KH43LG072	Heat Pump Drier	\$34.44	\$31.31
KH43LG074	16 cu in Liquid Line Drier	\$26.17	\$23.79
KH45LG140	8 cu in Suction Line Drier	\$46.84	\$42.58
KH45LG141	15 cu in Suction Line Drier	\$57.17	\$51.97

INSTALLATION SUPPLIES



CONDENSER PADS

Part #	Description	In Season Price	Pre-Season Price
EP-16X36X2-P	2" Condenser Pad 16"x36"	\$ 14.63	\$13.30
EP-24x24x2-P	2" Condenser Pad 24"x24"	\$ 13.57	\$12.34
EP-24X24X3-P	3" Condenser Pad 24"x24"	\$ 15.21	\$13.83
EP-30X30X2-P	2" Condenser Pad 30"x30"	\$ 17.26	\$15.69
EP-30X30X3-P	3" Condenser Pad 30"x30"	\$ 22.30	\$20.27
EP-33x33x2-P	2" Condenser Pad 33"x33"	\$ 19.54	\$17.77
EP-33X33X3-P	3" Condenser Pad 33"x33"	\$ 23.07	\$20.97
EP-33X38X2-P	2" Condenser Pad 33"x38"	\$ 22.50	\$20.45
EP-36X36X2-P	2" Condenser Pad 36"x36"	\$ 22.34	\$20.31
EP-36X36X3-P	3" Condenser Pad 36"x36"	\$ 27.07	\$24.61
EP-36x42x2-P	2" Condenser Pad 36"x42"	\$ 25.89	\$23.53
EP-36X48X2-P	2" Condenser Pad 36"x48"	\$ 28.63	\$26.03
EP-40X40X3-P	3" Condenser Pad 40"x40"	\$ 35.79	\$32.53

WALL BRACKETS & SNOW FEET

Part #	Description	In Season Price	Pre-Season Price
BRKT-SMALL	Wall Mount Bracket 18.5x28.5	\$51.24	\$49.09
BRKT-MEDIUM	Wall Mount Bracket 27x35	\$61.14	\$58.58
BRKT-LARGE	Wall Mount Bracket 36x40	\$90.25	\$86.47
KSASF0101AAA	4" High Snow Feet	\$35.79	\$32.53



ANTI-VIBRATION PADS

Part #	Description	In Season Price	Pre-Season Price
MP-4C	4 X 4 Rubber & Cork Pad	\$1.08	\$1.00

SOLDERING SUPPLIES



Part #	Description	In Season Price	Pre-Season Price
40027	4 OZ SOLDER PASTE	\$2.85	\$2.64
40022	STAY SILVER SOLDER FLUX	\$3.85	\$3.57
JA010	Sandcloth - Waterproof 1 1/2" X 10 Yards	\$5.26	\$4.89
JA025	Sandcloth - Waterproof 1 1/2" X 25 Yards	\$11.23	\$10.43
61035	15% SilFos - 1# Tube	\$169.35	\$157.26
JW-10001	"Stay Brite" Silver Bearing Solder	\$49.23	\$45.71
10030	95/5, 1# Spool	\$29.23	\$27.14

CHEMICALS



CHEMICALS



Part #	Description	In Season Price	Pre-Season Price
TT-8-G	TOP-KLEEN GREEN NO RINSE	\$8.68	\$7.01
TT-8-P	TOP-PRO BLUE NON ACID	\$9.53	\$8.03
TT-8-R+	TOP-PRO RED NON-ACID;CLEANER	\$9.94	\$8.81
TT-720-01	TOP-SUPER BRITE BROWN;FOAMING	\$11.52	\$11.03
TT-FLUSH-P16	Copper Flush, 16 oz, 1 lb Canister	\$49.97	\$43.85
TT-FLUSH-P30	Copper Flush, 30 oz, 2 lb Canister	\$86.75	\$81.00
TT-PVC-CEMENT-C	Toptech PVC Pipe Fusion Clear	\$7.13	\$6.24
TT-PVC-CEMENT-P	Toptech PVC Pipe Fusion Purple	\$7.13	\$6.24

TAPE & SEALANTS



TAPE

Part #	Description	In Season Price	Pre-Season Price
2PST	Aluminum Foil 2"x 50 Yard - 24/case	\$8.65	\$8.03
25PST	Aluminum Foil 2 1/2"x 50 yd - 20/cs	\$11.88	\$10.80
3PST	Aluminum Foil 3"x 50 yd - 16/case	\$13.18	\$11.99
339-2 -1/2	UL Alum Foil 2 1/2"x 60 yd - 20/cs	\$17.84	\$16.21
338-3	Foil, Scrim, Kraft 3"x 50 yd - 16/cs	\$14.46	\$13.43
TT-ELECTAPE	ELECTRICAL TAPE	\$1.02	\$0.90
TT-ELECTAPE-6	ELECTRICAL TAPE 6 PK	\$5.86	\$5.20

SILICONE SEALANTS

Part #	Description	In Season Price	Pre-Season Price
0809/OI	Red Heat Resist RTV Silicone-12/cs	\$7.08	\$6.57
0896	RTV Silicone-White 10.1 fl.oz.-12/cs	\$4.23	\$3.93
0896/50	RTV Silicone-Grey 10.1 fl.oz.-12/cs	\$4.23	\$3.93
0897	RTV Silicone-Clear 10.1 fl.oz.-12/cs	\$4.23	\$3.93

TOP TECH INDOOR AIR QUALITY



HUMIDIFIERS & AIR PURIFIERS

Part #	Description	In Season Price	Pre-Season Price
TT-HUM-225	12GPD Bypass	\$119.00	\$110.00
TT-HUM-265	17GPD Bypass	\$136.00	\$121.00
TT-HUM-365	17GPD Bypass - Fan Powered	\$227.00	\$212.00
TT-PAD-1	for TT-HUM-265 & TT-HUM-365	\$10.96	\$9.86
TT-PAD-2	for TT- HUM-225	\$7.76	\$6.98
TT-AK249	Air Knight: 24v 9" Length P.H.I. Air Purification Unit	\$367.25	\$347.12
TT-UV24-14	24v UV-C with Filter Shield	\$98.47	\$94.61
TT-UVB14	14" UV Replacement Bulb	\$46.15	\$44.44



TECHPURE MEDIA AIR CLEANERS

Part #	Description	In Season Price	Pre-Season Price
TT-MAC-1425	14x25 Furnace MERV 11	\$88.60	\$78.91
TT-MAC-1625	16x25 Furnace MERV 11	\$88.60	\$78.91
TT-MAC-1722	17x22 Air Handler MERV 11	\$88.60	\$78.91
TT-MAC-2020	20x20 Furnace MERV 11	\$88.60	\$78.91
TT-MAC-2025	20x25 Furnace MERV 11	\$88.60	\$78.91
TT-MAC-2122	21x22 Air Handler MERV 11	\$88.60	\$78.91
TT-MAC-2522	25x22 Air Handler MERV 11	\$88.60	\$78.91



REPLACEMENT MEDIA - TECHPURE M.A.C.

Part #	Description	In Season Price	Pre-Season Price
TT-FM-1620	16 x 20 x 4 MERV 11	\$12.50	\$11.16
TT-FM-1625	16 x 25 x 4 MERV 11	\$14.35	\$12.93
TT-FM-2020	20 x 20 x 4 MERV 11	\$13.06	\$11.74
TT-FM-2025	20 x 25 x 4 MERV 11	\$15.73	\$14.18
TT-FM15-1620	16 x 20 x 4 MERV 15	\$41.60	\$37.14
TT-FM15-1625	16 x 25 x 4 MERV 15	\$44.49	\$40.08
TT-FM15-2020	20 x 20 x 4 MERV 15	\$45.32	\$40.74
TT-FM15-2025	20 x 25 x 4 MERV 15	\$53.03	\$47.80



TrueSTEAM™ HUMIDIFIERS & ACC. **Honeywell**

Part #	Description	In Season Price	Pre-Season Price
HM509H8908	TrueSteam 9 GPD Humidification System W/Manual Humidistat	\$402.88	\$376.32
HM509DG115	TrueSteam 9 GPD With TrueIAQ Control	\$467.60	\$436.78
HM509W1005	TrueSteam 9 GPD Wireless TrueSTEAM. (Humidistat not included)	\$397.04	\$370.87
HM512DG115	TrueSteam 12 GPD With TrueIAQ® Control	\$564.67	\$527.45
HM512W1005	TrueSteam 12 GPD Wireless TrueSTEAM. (Humidistat not included)	\$540.66	\$505.03
H8908ASPST	Manual Humidistat For TrueSteam	\$40.28	\$37.63
50028044-001	In-Line Water Filter	\$28.21	\$26.35
50024917-001	10' Remote-Mount kit	\$103.22	\$96.41
50024917-002	20' Remote-Mount kit	\$133.13	\$124.36
50045947-001	RO Filter System with Storage Tank	\$172.70	\$161.32



HUMIDIFIERS

Honeywell

Part #	Description	In Season Price	Pre-Season Price
HE100A1000	TrueEase Small By-Pass 12 Gallons Per Day	\$134.33	\$125.48
HE150A1005	TrueEase Small By-Pass 30% Water Savings 12 Gallons Per Day	\$188.60	\$176.17
HE200A1000	TrueEase Large By-Pass 17 Gallons Per Day	\$147.90	\$138.15
HE250A1005	TrueEase Large By-Pass 30% Water Savings 17 Gallons Per Day	\$202.17	\$188.85
HE300A1005	TrueEase Large Fan Powered 18 Gallons Per Day	\$256.45	\$239.54

WATER PANELS

Honeywell

Part #	Description	In Season Price	Pre-Season Price
HC26A1008	Water Panel For TopTech & Honeywell Small By-Pass	\$7.16	\$6.69
HC22A1007	Water Panel For TopTech & Honeywell Large By-Pass & Power	\$5.07	\$4.74

AIR QUALITY



Honeywell AIR FILTRATION

Part #	Description	In Season Price	Pre-Season Price
F300A1625	Whole-House Electronic Air Cleaner 16 X 25 Without/Post-Filter	\$491.11	\$458.75
F300A2025	Whole-House Electronic Air Cleaner 20 X 25 Without/Post-Filter	\$553.84	\$517.34
F100F1012	Whole-House Media Air Cleaner 16 X 25	\$156.46	\$146.15
F100F1038	Whole-House Media Air Cleaner 20 X 25	\$156.46	\$146.15

Honeywell REPLACEMENT FILTERS

Part #	Description	In Season Price	Pre-Season Price
FC100A1029	16" X 25" Media Filter Replacement	\$20.46	\$19.11
FC100A1011	20" X 20" Media Filter Replacement	\$20.46	\$19.11
FC100A1037	20" X 25" Media Filter Replacement	\$20.46	\$19.11

Aprilaire® AIR CLEANERS & HUMIDIFIERS

Part #	Description	In Season Price	Pre-Season Price
2210	2210-High Efficiency Air Cleaner	\$143.88	\$134.40
2410	2410-High Efficiency AC Low Profile	\$140.42	\$131.17
5000-AA	Central Electronic Air Cleaner	\$516.12	\$482.10
RES -500M	Bypass Humidifier Economy Unit	\$122.09	\$114.04
600M	Bypass Humidifier Manual Unit	\$134.10	\$125.26
AA600	Bypass Humidifier Automatic Unit	\$169.54	\$158.37
700A	Powered Humidifier Automatic Unit	\$249.70	\$233.24
RES -800	Steam Humidifier	\$697.35	\$651.39





HUMIDIFIER PADS, PARTS & ACCESSORIES

Part #	Description	In Season Price	Pre-Season Price
10	#10 Water Panel 110, 220, 550 (10)	\$5.16	\$4.82
AA12	#12 112, 224, 225, 440, 445 (10)	\$9.66	\$9.02
35	#35 350, 360, 560, 600, 760 (10)	\$7.20	\$6.73
RES-80	Cannister for Model 800	\$51.33	\$47.95
50	#50 Current Sensing Relay 24V App.	\$23.76	\$22.19
51	#51 Current Sensing Relay 115V App.	\$29.84	\$27.87
AA4223	Spud Model 550/560 6/PK	\$2.05	\$1.91
RES-4040	Solenoid Valve 24V	\$41.93	\$39.16



FILTER REPLACEMENTS

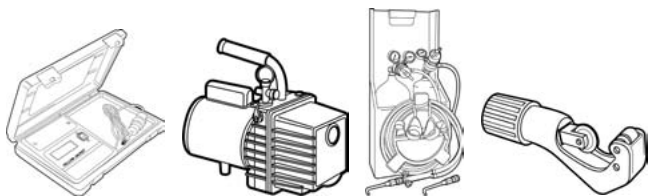
Part #	Description	In Season Price	Pre-Season Price
201	Replacement Media for 2200 10/ctn	\$21.86	\$20.42
401	Replacement Media for 2400 10/ctn	\$21.19	\$19.80
501	Replacement Media For 5000	\$29.84	\$27.87
210	Replacement Media For 2210	\$29.42	\$27.48
213	Replacement Media For 4200	\$32.88	\$30.71
410	Replacement Media For 2410	\$27.11	\$25.32
413	Replacement Media For 4400	\$30.04	\$28.06

HRV-ERV

Part #	Description	In Season Price	Pre-Season Price
GSFH1K	HEPA Only	\$538.38	\$519.95
GSVH1K	HEPA w/ Outside Air	\$681.26	\$657.93
GSHH3K	HEPA w/ Outside Air & Recovery	\$913.46	\$882.18
GSEH3K	HEPA w/Outside Air/Recovery ERV	\$1,079.01	\$1,042.05
ACCGSFHP2	Replacement HEPA & Prefilters	\$116.00	\$112.03
ERV90HCT	Energy Recovery 45-90 CFM	\$802.34	\$774.86
HRV90HT	Heat Recovery 45-96 CFM	\$664.28	\$641.53

FILTRATION & AIR FILTERS

Part #	Description	In Season Price	Pre-Season Price
14X20X1PL40	14 x 20 x 1 - 12/case PLEATED	\$38.64	\$36.00
14X25X1PL40	14 x 25 x 1 - 12/case PLEATED	\$34.20	\$31.92
16X20X1PL40	16 x 20 x 1 - 12/case PLEATED	\$36.96	\$34.56
16X25X1PL40	16 x 25 x 1 - 12/case PLEATED	\$33.84	\$31.56
20X20X1PL40	20 x 20 x 1 - 12/case PLEATED	\$29.28	\$27.36
20X25X1PL40	20 x 25 x 1 - 12/case PLEATED	\$35.28	\$33.00
14X25X2PL40	14 x 25 x 2 - 12/case PLEATED	\$45.36	\$42.36
16X20X2PL40	16 x 20 x 2 - 12/case PLEATED	\$33.12	\$30.96
16X25X2PL40	16 x 25 x 2 - 12/case PLEATED	\$31.56	\$29.52
20X20X2PL40	20 x 20 x 2 - 12/case PLEATED	\$34.20	\$31.92
20X24X2PL40	14 x 20 x 1 - 12/case PLEATED	\$38.76	\$36.24
20X25X2PL40	14 x 20 x 1 - 12/case PLEATED	\$32.88	\$30.72
24X24X2PL40	14 x 20 x 1 - 12/case PLEATED	\$30.72	\$28.68
16X25X4PL40	14 x 20 x 1 - 6/case PLEATED	\$19.56	\$18.24
20X25X4PL40	14 x 20 x 1 - 6/case PLEATED	\$16.92	\$15.84
14X20X1PSF	14 x 20 x 1 - 12/case	\$15.12	\$14.16
14X25X1PSF	14 x 25 x 1 - 12/case	\$16.20	\$15.12
14X30X1PSF	14X30X1 POLY FILTER	\$21.84	\$20.40
16X20X1PSF	16 x 20 x 1 - 12/case	\$16.08	\$15.00
20X20X1PSF	20 x 20 x 1 - 12/case	\$16.80	\$15.60
20X25X1PSF	20 x 25 x 1 - 12/case	\$18.24	\$17.04
25X25X1PSF	25 x 25 x 1 - 12/case	\$21.36	\$19.92
16X20X2PSF	16 x 20 x 2 - 12/case	\$22.80	\$21.36
16X25X2PSF	16 x 25 x 2 - 12/case	\$24.96	\$23.40
20X20X2PSF	20 x 20 x 2 - 12/case	\$25.20	\$23.52
20X25X2PSF	20 x 25 x 2 - 12/case	\$27.60	\$25.80
24X24X2PSF	24 x 24 x 2 - 12/case	\$30.72	\$28.68
14X24X1PSF	14 x 24 x 1 POLY FILTER	\$16.44	\$15.36
16X25X1PSF	16 x 25 x 1 - 12/case	\$16.92	\$15.84
16X30X1PSF	16X30X1 POLY FILTER	\$18.24	\$17.04
20X30X1PSF	20X30X1 POLY FILTER	\$26.16	\$24.36
24X24X1PSF	24X24X1 POLY FILTER	\$20.40	\$19.08
10X30X1PSF	10X30X1 POLY FILTER	\$20.76	\$19.44
12X30X1PSF	12X30X1 POLY FILTER	\$21.84	\$20.40



TOOLS



Part #	Description	In Season Price	Pre-Season Price
TT-LD	Refrigerant Leak Detector - Heated Diode	\$203.95	\$194.24
TT-LD-S	Replacement Sensor	\$60.80	\$60.62
TT-MM1	Mini-Max Recovery Unit	\$514.66	\$485.66
TT-SCALE	Refrigerant Charging Scale - Handheld Display w/ 6' Cord	\$150.47	\$143.42
TT-V5	5.5 CFM 2-Stage, 1/2 HP, 110-115v/60 Hz	\$259.92	\$250.47
TT-100	Oxy/Acetylene Welding Kit	\$164.12	\$158.83
TT-2VM5H	R-22/R-410A/R-404A 2-1/2" Gauge Set, 5' Hoses & Protective Covers	\$56.03	\$48.43
TT-70000	1/8" to 7/8" O.D. Mini Tubing Cutter	\$7.19	\$6.41
TT-70001	1/8" to 1-1/4" O.D. Tubing Cutter	\$15.85	\$13.82
TT-70024	1/4" to 1-1/8" O.D. Mini Tubing Cutter	\$18.03	\$15.40
TT-70090	5/16" to 1-5/8" O.D Tubing Cutter	\$30.94	\$26.45
TT-70022	Reversible Ratchet Wrench	\$8.24	\$6.59
TT-70074	Offset Ratchet Wrench, includes Hex Key	\$11.34	\$10.00
TT-70078	PVC Ratchet Cutter	\$15.53	\$13.27

MANIFOLD ACCESSORIES



Part #	Description	In Season Price	Pre-Season Price
TT-5HB	5' Hose Blue	\$12.82	\$11.49
TT-5HR	5' Hose Red	\$12.82	\$11.49
TT-5HSET	5' Hose Set (Blue, Red, Yellow)	\$34.69	\$33.14
TT-5HY	5' Hose Yellow	\$12.82	\$11.49
TT-BVB	6" Ball Valve Ext Blue	\$14.06	\$13.08
TT-BVR	6" Ball Valve Ext Red	\$14.06	\$13.08
TT-BVSET	6" Ball Valve Ext Set (Blue, Red, Yellow)	\$41.94	\$38.77
TT-BVY	6" Ball Valve Ext Yellow	\$14.06	\$13.08
TT-HSG	2-1/2" High Side Gauge with Boot R-410A/R-22/R-404A/R-134A	\$12.20	\$10.35
TT-HSGL	3-1/8" High Side Gauge with Boot R-410A/R-22/R-404A/R-134A	\$16.60	\$14.80
TT-LSG	2-1/2" Low Side Gauge with Boot R-410A/R-22/R-404A/R-134A	\$12.20	\$10.35
TT-LSGL	3-1/8" Low Side Gauge with Boot R-410A/R-22/R-404A/R-134A	\$16.60	\$14.80

TOOLS



TOOLS & INSTRUMENTS



Part #	Description	In Season Price	Pre-Season Price
DPS300	Digital Swivel Neck Pocket	\$13.81	\$13.21
SH66A	Three Probe Elec. Diff. Temp. Tester	\$219.81	\$210.39
SRH77A	Temp./Humidity Tester	\$312.24	\$298.86
1075	General Purpose Puncture Probe	\$36.58	\$35.01



SERVICE TOOLS



Part #	Description	In Season Price	Pre-Season Price
712-202-G1	D-TEK SELECT (Refrigerant LD)	\$424.75	\$406.54
706600G1	GAS-MATE (Combustile Gas LD)	\$192.54	\$184.29
705-202-G1	TEK-MATE (Cordless Refrigerant LD)	\$179.52	\$171.83
711202G1	WHISPER (Ultrasonic Leak Detec.)	\$212.18	\$203.09
714-202-G1	VORTEX (Refrigerant Recovery Mach)	\$744.72	\$712.80
710-202-G1	PILOT (Vacuum Gauge)	\$219.31	\$209.91
713202G1	INFICON CHARGING SCALE	\$189.70	\$181.57
715-202-G1	CO Meter	\$222.09	\$212.57



UEI INSTRUMENTS



Part #	Description	In Season Price	Pre-Season Price
CO71A	Carbon Monoxide Detector w/case	\$213.39	\$204.24
CO91	CO Analyzer	\$465.63	\$445.67
CD100A	Combustile Gas Leak Detector	\$169.73	\$162.46
EM201	Electronic Manometer	\$169.73	\$162.46
INF155	SCOUT 1 IR THERMOMETER	\$77.57	\$74.24
DL389	PHOENIX PRO PLUS CLAMP MTR	\$155.18	\$148.53
UEI-DL49	Clamp on Volt	\$107.64	\$103.03
DL379	PHOENIX PRO CLAMP METER	\$121.22	\$116.03
PDT550	Pocket Thermometer	\$16.97	\$16.24
DAFM3	Air Flow Meter	\$184.28	\$176.39
UEI-INF215	Infrared Thermometer	\$155.18	\$148.53

SHEET METAL TOOLS



Part #	Description	In Season Price	Pre-Season Price
S2-MAL	S2 - 3" Hand Seamer	\$44.33	\$42.43
12F	#12 - 12" Folding Tool	\$14.09	\$13.49
N1	N1 - Hand Notcher 13/16d	\$43.28	\$41.43
DS1	DS1 - Duct Stretcher	\$24.52	\$23.47
HC1	HC1 - Hole Cutter	\$63.73	\$61.00
C5-MAL	C5 - Pipe Crimper 5 Blade	\$27.39	\$26.21
TY4G	Tie Tool Standard Grip	\$38.52	\$36.87
MC12N	12" Aluminum Snip	\$35.28	\$33.77
MC14A	14" Aluminum Snip	\$39.09	\$37.41



Part #	Description	In Season Price	Pre-Season Price
P6510-L	OFFSET SNIPS LEFT CUT	\$19.49	\$18.10
P6510-R	OFFSET RIGHT AVIATIONSNIP	\$19.49	\$18.10
P6716-B	BULLDOG AVIATION SNIP	\$16.60	\$15.41
P6716-S	STRAIGHT CUT AVIATION	\$15.12	\$14.04
P6716-L	LEFT CUT AVIATION SNIP	\$15.12	\$14.04
P6716-R	AVIATION SNIPS RIGHT CUT	\$15.12	\$14.04

AIR CONDITIONING

1.5 TON	
Item	Part #
Condenser	PA13NR01800G
Non-Prog. T-stat	TT-N-701
Disconnect	TT-60AMP-NF
Whip	6-12-6
PAD	EP-30X30X2-P
Drier	TT-LLD163S
AIR CONDITIONING	
Package	PD-1.5 AC
Total Price \$	\$ 720
Trend Order #	18022186

2.0 TON	
Item	Part #
Condenser	PA13NR02400G
Non-Prog. T-stat	TT-N-701
Disconnect	TT-60AMP-NF
Whip	6-12-6
PAD	EP-30X30X2-P
Drier	TT-LLD163S
AIR CONDITIONING	
Package	PD-2.0 AC
Total Price \$	\$ 771
Trend Order #	18022290

2.5 TON	
Item	Part #
Condenser	PA13NR03000G
Non-Prog. T-stat	TT-N-701
Disconnect	TT-60AMP-NF
Whip	6-12-6
PAD	EP-30X30X2-P
Drier	TT-LLD163S
AIR CONDITIONING	
Package	PD-2.5 AC
Total Price \$	\$ 803
Trend Order #	18022355

3.0 TON	
Item	Part #
Condenser	PA13NR03600G
Non-Prog. T-stat	TT-N-701
Disconnect	TT-60AMP-NF
Whip	6-12-6
PAD	EP-36X36X2-P
Drier	TT-LLD163S
AIR CONDITIONING	
Package	PD-3.0 AC
Total Price \$	\$ 897
Trend Order #	18022528

3.5 TON	
Item	Part #
Condenser	PA13NR04200G
Non-Prog. T-stat	TT-N-701
Disconnect	TT-60AMP-NF
Whip	6-34-6
PAD	EP-36X36X2-P
Drier	TT-LLD163S
AIR CONDITIONING	
Package	PD-3.5 AC
Total Price \$	\$ 1,008
Trend Order #	1802372

4.0 TON	
Item	Part #
Condenser	PA13NR04800G
Non-Prog. T-stat	TT-N-701
Disconnect	TT-60AMP-NF
Whip	6-34-6
PAD	EP-36X36X2-P
Drier	TT-LLD163S
AIR CONDITIONING	
Package	PD-4.0 AC
Total Price \$	\$ 1,084
Trend Order #	18023751

5.0 TON	
Item	Part #
Condenser	PA13NR06000G
Non-Prog. T-stat	TT-N-701
Disconnect	TT-60AMP-NF
Whip	6-34-6
PAD	EP-36X36X2-P
Drier	TT-LLD163S
AIR CONDITIONING	
Package	PD-5.0 AC
Total Price \$	\$ 1,254
Trend Order #	18023836

LIMITED WARRANTY
• Limited warranty: 5 years on parts and 5 years on compressor



UPDATED 9/1/11

HEAT PUMP

1.5 TON	
Item	Part #
Condenser	PH13NR01800G
Non-Prog. T-stat	TT-N-721
Disconnect	TT-60AMP-NF
Whip	6-12-6
PAD	EP-30X30X2-P
Drier	TT-LLDBF163S
HEAT PUMP	
Package	PD-1.5 HP
Total Price \$	\$ 966
Trend Order #	18021737

2.0 TON	
Item	Part #
Condenser	PH13NR02400G
Non-Prog. T-stat	TT-N-721
Disconnect	TT-60AMP-NF
Whip	6-12-6
PAD	EP-30X30X2-P
Drier	TT-LLDBF163S
HEAT PUMP	
Package	PD-2.0 HP
Total Price \$	\$ 992
Trend Order #	18021810

2.5 TON	
Item	Part #
Condenser	PH13NR03000G
Non-Prog. T-stat	TT-N-721
Disconnect	TT-60AMP-NF
Whip	6-12-6
PAD	EP-30X30X2-P
Drier	TT-LLDBF163S
HEAT PUMP	
Package	PD-2.5 HP
Total Price \$	\$ 1,098
Trend Order #	18021852

3.0 TON	
Item	Part #
Condenser	PH13NR03600G
Non-Prog. T-stat	TT-N-721
Disconnect	TT-60AMP-NF
Whip	6-12-6
PAD	EP-36X36X2-P
Drier	TT-LLDBF163S
HEAT PUMP	
Package	PD-3.0 HP
Total Price \$	\$ 1,203
Trend Order #	18021904

3.5 TON	
Item	Part #
Condenser	PH13NR04200G
Non-Prog. T-stat	TT-N-721
Disconnect	TT-60AMP-NF
Whip	6-34-6
PAD	EP-36X36X2-P
Drier	TT-LLDBF163S
HEAT PUMP	
Package	PD-3.5 HP
Total Price \$	\$ 1,298
Trend Order #	18021961

4.0 TON	
Item	Part #
Condenser	PH13NR04800G
Non-Prog. T-stat	TT-N-721
Disconnect	TT-60AMP-NF
Whip	6-34-6
PAD	EP-36X36X2-P
Drier	TT-LLDBF163S
HEAT PUMP	
Package	PD-4.0 HP
Total Price \$	\$ 1,412
Trend Order #	18022034

5.0 TON	
Item	Part #
Condenser	PH13NR06000G
Non-Prog. T-stat	TT-N-721
Disconnect	TT-60AMP-NF
Whip	6-34-6
PAD	EP-36X36X2-P
Drier	TT-LLDBF163S
HEAT PUMP	
Package	PD-5.0 HP
Total Price \$	\$ 1,661
Trend Order #	18022122

LIMITED WARRANTY
 • Limited warranty: 5 years on parts and 5 years on compressor



UPDATED 9/1/11



Carrier Enterprise - Comfort Products

Payne Bundles R410A 13 SEER CUSTOMER PRICE SHEET



A/C - 80% Gas System					Heat Pump System			A/C - 90% Gas System		
Cond.	•	•	•		H/P	•	•	Cond.	•	
Furnace	•			•	Coil	•		Furnace	•	•
Coil	•	•			Risers	•	•	Coil	•	
TXV	•	•			Disc.	•	•	TXV	•	
N/P T-stat	•	•	•	•	Whip	•	•	N/P T-stat	•	•
Disc.	•	•	•		Pad	•	•	Disc.	•	
Whip	•	•	•		N/P T-stat	•	•	Whip	•	
Pad	•	•	•		Drier	•	•	Pad	•	
Drier	•	•	•		TXV	•	•	Drier	•	
Draft Hood Conct	•			•				Connctric Vent	•	•
Tonnage	Full System	Cond. & Coil	Cond. Only	Furnace Only	Tonnage	Heat Pump & Coil	Heat Pump Only	Tonnage	Full System	Furnace Only
Package:	PB3-B	PB3-BC	PB3-K	PB3-CF	Package:	PB3-D	PB3-HP	Package:	PB3-B	PB3-CF
1.5 TON	\$ 1,373	\$ 963	\$ 728	\$ 433	1.5 TON	\$ 1,234	\$ 988	1.5 TON	\$ 1,666	\$ 726
2.0 TON	\$ 1,425	\$ 1,015	\$ 780	\$ 433	2.0 TON	\$ 1,261	\$ 1,015	2.0 TON	\$ 1,718	\$ 726
2.5 TON	\$ 1,464	\$ 1,021	\$ 771	\$ 469	2.5 TON	\$ 1,326	\$ 1,065	2.5 TON	\$ 1,768	\$ 767
3.0 TON	\$ 1,630	\$ 1,158	\$ 908	\$ 496	3.0 TON	\$ 1,491	\$ 1,230	3.0 TON	\$ 1,900	\$ 765
3.5 TON	\$ 1,839	\$ 1,314	\$ 1,018	\$ 549	3.5 TON	\$ 1,629	\$ 1,322	3.5 TON	\$ 2,217	\$ 926
4.0 TON	\$ 1,917	\$ 1,391	\$ 1,095	\$ 548	4.0 TON	\$ 1,745	\$ 1,438	4.0 TON	\$ 2,295	\$ 926
5.0 TON	\$ 2,235	\$ 1,651	\$ 1,268	\$ 607	5.0 TON	\$ 2,085	\$ 1,692	5.0 TON	\$ 2,594	\$ 965

A/C - 80% Gas System					Heat Pump System			A/C - 90% Gas System		
UPGRADED BUNDLES INCLUDE ITEMS IN BASE BUNDLE (ABOVE) PLUS ITEMS BELOW * EXCLUDING THE NON-PROG. T-STAT										
Prog. T-stat	•	•	•	•	Prog. T-stat	•	•	Prog. T-stat	•	•
Air Cleaner	•	•	•	•	Air Cleaner	•	•	Air Cleaner	•	•
AirKnight	•	•	•	•	AirKnight	•	•	AirKnight	•	•
Humidifier	•	•	•	•	Humidifier	•	•	Humidifier	•	•
Tonnage	Full System	Cond. & Coil	Cond. Only	Furnace Only	Tonnage	Heat Pump & Coil	Heat Pump Only	Tonnage	Full System	Furnace Only
Package:	PB3-G	PB3-GC	PB3-KC	PB3-HF	Package:	PB3-I	PB3-IH	Package:	PB3-J	
1.5 TON	\$ 1,999	\$ 1,589	\$ 1,354	\$ 1,060	1.5 TON	\$ 1,860	\$ 1,614	1.5 TON	\$ 2,293	\$ 1,353
2.0 TON	\$ 2,051	\$ 1,641	\$ 1,406	\$ 1,060	2.0 TON	\$ 1,887	\$ 1,641	2.0 TON	\$ 2,345	\$ 1,353
2.5 TON	\$ 2,090	\$ 1,647	\$ 1,397	\$ 1,096	2.5 TON	\$ 1,952	\$ 1,691	2.5 TON	\$ 2,393	\$ 1,392
3.0 TON	\$ 2,257	\$ 1,784	\$ 1,534	\$ 1,122	3.0 TON	\$ 2,117	\$ 1,856	3.0 TON	\$ 2,527	\$ 1,392
3.5 TON	\$ 2,466	\$ 1,941	\$ 1,645	\$ 1,175	3.5 TON	\$ 2,255	\$ 1,948	3.5 TON	\$ 2,844	\$ 1,553
4.0 TON	\$ 2,544	\$ 2,018	\$ 1,722	\$ 1,175	4.0 TON	\$ 2,371	\$ 2,064	4.0 TON	\$ 2,921	\$ 1,553
5.0 TON	\$ 2,862	\$ 2,278	\$ 1,895	\$ 1,234	5.0 TON	\$ 2,711	\$ 2,318	5.0 TON	\$ 3,220	\$ 1,592

* Pricing Subject to Change Without Notice

Get More. Payne-Less

DUCT-FREE HIGH WALL SYSTEMS



turn to the experts™



COMFORT

Efficiency: 13 SEER and 7.7 HSPF

Limited warranty: 2-year all parts / 6-year compressor standard for residential applications

SOUND

When noise is a concern, a duct-free systems is the answer. Indoor units are whisper quiet and because the system does not use ductwork, there is none of the noise associated with air moving through ducts.

CONTROLS

Wireless Remote Control (included)

TECHNOLOGY

Puron® refrigerant

Compressor: Rotary

Cooling Capacity (tons): 12,000 - 24,000 Btuh

AESTHETICS

Protection: Galvanized steel, bonderized and coated with a baked-enamel finish on inside and outside of outdoor unit

External Finish: White

HIGH WALL SYSTEMS - COOLING

Outdoor/Indoor Model	In Season Price	Pre-Season Price	In Season System Price	Pre-Season System Price
38MVC012---3	\$585.48	\$556.20	\$902.76	\$857.62
40MVC012---3	\$317.29	\$301.42		
38MVC018---3	\$829.14	\$787.68	\$1,274.94	\$1,211.19
40MVC018---3	\$445.80	\$423.51		
38MVC024---3	\$936.68	\$889.84	\$1,431.13	\$1,359.57
40MVC024---3	\$494.45	\$469.73		

HIGH WALL SYSTEMS - HEAT PUMPS

Outdoor/Indoor Model	In Season Price	Pre-Season Price	In Season System Price	Pre-Season System Price
38MVQ012---3	\$672.50	\$638.88	\$1,034.41	\$982.69
40MVQ012---3	\$361.91	\$343.82		
38MVQ018---3	\$930.44	\$883.92	\$1,432.03	\$1,360.42
40MVQ018---3	\$501.59	\$476.51		
38MVQ024---3	\$1,052.70	\$1,000.07	\$1,615.43	\$1,534.65
40MVQ024---3	\$562.73	\$534.59		

Visit www.residential.carrier.com for additional product information.



MINI-SPLIT AIR CONDITIONERS AND HEAT PUMPS

HIGH WALL



Part #	Description	Indoor/Outdoor Model #s	SEER	Individual Price	System Price
9R2	9,700 BTU Cooling/9,600 BTU Heating, 115V Heat Pump	ASU9R2 AOU9R2	14.3	\$324.55 \$486.55	\$811.10
9RLS	9,000 BTU Cooling/12,000 BTU Heating, 208-230V Heat Pump	ASU9RLS AOU9RLS	26	\$455.99 \$683.97	\$1,139.96
9RLFW	9,000 BTU Cooling/12,000 BTU Heating, 208-230V Heat Pump	ASU9RLF AOU9RLFW	23	\$410.81 \$616.21	\$1,027.02
12R2	12,300 BTU Cooling/12,800 BTU Heating, 115V Heat Pump	ASU12R2 AOU12R2	13.7	\$349.39 \$523.80	\$873.19
12RLS	12,000 BTU Cooling/16,000 BTU Heating, 208-230V Heat Pump	ASU12RLS AOU12RLS	25	\$497.53 \$746.17	\$1,243.70
12RLFW	12,000 BTU Cooling/16,000 BTU Heating, 208-230V Heat Pump	ASU12RLF AOU12RLFW	22	\$453.04 \$679.55	\$1,132.59
15RLS	14,500 BTU Cooling/18,000 BTU Heating, 208-230V Heat Pump	ASU15RLS AOU15RLS	21	\$543.24 \$814.87	\$1,358.11
18RLXFW	18,000 BTU Cooling/21,600 BTU Heating, 208-230V Heat Pump	ASU18RLF AOU18RLXFW	19.2	\$696.07 \$996.31	\$1,692.38
24RLXFW	22,000 BTU Cooling/27,600 BTU Heating, 208-230V Heat Pump	ASU24RLF AOU24RLXFW	18	\$741.43 \$1,077.84	\$1,819.27
30RLXFW	30,000 BTU Cooling/32,000 BTU Heating, 208-230V Heat Pump	ASU30RLX AOU30RLX	17.5	\$856.23 \$1,284.35	\$2,140.58
18CL	18,000 BTU Cooling Only, 208-230V	ASU18CL AOU18CL	19	\$541.52 \$812.28	\$1,353.80
24CL1	24,000 BTU Cooling Only, 208-230V	ASU24CL1 AOU24CL1	17.5	\$628.56 \$942.84	\$1,571.40
30CLX1	30,800 BTU Cooling Only, 208-230V	ASU30CLX1 AOU30CLX1	16.5	\$749.52 \$1,124.83	\$1,874.35
36CLX1	33,000 BTU Cooling Only, 208-230V	ASU36CLX1 AOU36CLX1	15.5	\$999.55 \$1,499.59	\$2,499.14

CEILING CASSETTE



Part #	Description	Indoor/Outdoor Model #s	SEER	Individual Price	System Price
18RCLX	17,800 BTU Cooling/21,000 BTU Heating, 208-230V	AUU18RCLX AOU18RLX	16	\$1,284.67 \$1,318.68	\$2,603.35
24RCLX	22,200 BTU Cooling/24,200 BTU Heating, 208-230V	AUU24RCLX AOU24RLX	15	\$1,475.83 \$1,515.79	\$2,991.62
36RCLX	34,100 BTU Cooling/36,000 BTU Heating, 208-230V	AUU36RCLX AOU36RLX	14	\$1,854.36 \$1,854.36	\$3,708.72
42RCLX	42,700 BTU Cooling/45,200 BTU Heating, 115V	AUU42RCLX AOU42RLX	15	\$2,080.63 \$2,080.63	\$4,161.26

For additional product information visit: www.fujitsugeneral.com/

CEILING & UNIVERSAL MOUNTED

Part #	Description	Indoor/Outdoor Model #s	SEER	Individual Price	System Price
18RULX	17,800 BTU Cooling/21,500 BTU Heating, 208-230V	ABU18RULX AOU18RLX	16	\$564.84 \$1,318.68	\$1,883.52
24RULX	22,200 BTU Cooling/24,000 BTU Heating, 208-230V	ABU24RULX AOU24RLX	15	\$636.12 \$1,515.79	\$2,151.91
36RULX	34,100 BTU Cooling/36,500 BTU Heating, 208-230V	ABU36RSLX AOU36RLX	14	\$1,023.31 \$1,854.36	\$2,877.67

MULTI-ZONE HEAT PUMP COMBINATIONS

OUTDOOR UNIT	Connectable Indoor Units	Cooling Range (°F)	Heating Range (°F)	Price
AOU18RLXFZ	2 (9K + 9K)	14~115	5~75	\$1,153.44
AOU24RLXFZ	2 to 3 (9K + 7K + 7K)	14~115	5~75	\$1,310.04
AOU36RLXFZ	3 to 4 (9K X 4)	32~115	14~75	\$2,033.11
AOU36RLXFZ	2 (18K + 18K)	50~115	14~75	\$2,033.11

INDOOR UNIT	Description	Nominal Cooling (BTU/h)	Nominal Heating (BTU/h)	Price
ASU7RLF	Wall Mounted	7,000	8,100	\$370.32
ASU9RLF	Wall Mounted	9,000	10,200	\$410.81
ASU12RLF	Wall Mounted	12,000	13,500	\$453.04
ASU18RLF	Wall Mounted	18,000	20,000	\$696.07
ASU24RLF	Wall Mounted	24,000	27,000	\$741.43
AUU9RLF	Compact Cassette	9,000	10,200	\$505.23
AUU12RLF	Compact Cassette	12,000	13,500	\$594.48
AUU18RLF	Compact Cassette	18,000	20,000	\$838.16
ARU9RLF	Slim Duct	9,000	10,200	\$550.71
ARU12RLF	Slim Duct	12,000	13,500	\$570.56
ARU18RLF	Slim Duct	18,000	20,000	\$745.31
ARU24RLF	Slim Duct	24,000	27,000	\$977.15

ACCESSORIES

Part #	Description	Price
40680200B6B3W144	1/4X3/8X20 LS W/CABLE Lineset	\$119.81
40680300B6B3W144	1/4X3/8X30 LS W/CABLE Lineset	\$159.16
40680500B6B3W144	1/4X3/8X50 LS W/CABLE Lineset	\$206.39
40880300B6B3W144	1/4X1/2X30 LS W/CABLE Lineset	\$164.23
40880500B6B3W144	1/4X1/2X50 LS W/CABLE Lineset	\$249.02
41080200B6B3W144	1/4X5/8X20 LS W/CABLE Lineset	\$129.30
41080300B6B3W144	1/4X5/8X30 LS W/CABLE Lineset	\$170.89
41080500B6B3W144	1/4X5/8X50 LS W/CABLE Lineset	\$220.49
61080200B6B3W144	3/8X5/8X20 LS W/CABLE Lineset	\$140.44
61080300B6B3W144	3/8X5/8X30 LS W/CABLE Lineset	\$180.61
61080500B6B3W144	3/8X5/8X50 LS W/CABLE Lineset	\$229.19
K9R410A55	R410A Swivel hose connection fitting	\$9.99



MODEL UA STANDARD HIGH EFFICIENCY HEATER

STANDARD EQUIPMENT INCLUDES:

- Burner housing assembly with hinged cover
- Aluminized combustion tube with gasket
- Combustion air inlet collar
- Baffles as required
- Hot rolled tube, parabolic aluminum reflectors, end caps, heavy duty couplings, and hanging accessories per specified length



Part #	Capacity	Tube Length	Price
UA06N2S	60,000 BTU	20'	\$858.90
UA06N3S	60,000 BTU	30'	\$980.70
UA08N2S	80,000 BTU	20'	\$882.00
UA08N3S	80,000 BTU	30'	\$1,003.80
UA08N4S	80,000 BTU	40'	\$1,079.40
UA10N2S	100,000 BTU	20'	\$882.00
UA10N3S	100,000 BTU	30'	\$1,003.80
UA10N4S	100,000 BTU	40'	\$1,079.40
UA12N3S	125,000 BTU	30'	\$1,009.05
UA12N4S	125,000 BTU	40'	\$1,137.15
UA12N5S	125,000 BTU	50'	\$1,278.90
UA17N5S	175,000 BTU	50'	\$1,285.20
UA17N6S	175,000 BTU	60'	\$1,407.00
UA20N6S	205,000 BTU	60'	\$1,415.40

ACCESSORIES

Part #	Description	Price
CE014	Line volt thermostat	\$17.42
CT011	Vent terminal 4"	\$44.09
CS006	Wall thimble 4"	\$35.48
CG134	LP Kit 60,000 BTU NG-LP	\$3.87
CG135	LP Kit 80,000 BTU NG-LP	\$3.87
CG136	LP Kit 100,000 BTU NG-LP	\$3.87
CG137	LP Kit 125,000 BTU NG-LP	\$3.87
CG138	LP Kit 150,000 BTU NG-LP	\$3.87
CG139	LP Kit 175,000 BTU NG-LP	\$3.87
CG140	LP Kit 205,000 BTU NG-LP	\$3.87
CG230	NG to LP Conversion Kit	\$5.24
CG012	24" x 1/2" Flex Connector- Up to 150 MBH	\$16.26
CG024	36" x 3/4" Flex Connector- 175 MBH & up	\$64.04

REZNOR[®]

MODEL UDAP

GAS-FIRED UNIT HEATER

PART #	PRICE
UDAP30	\$608.59
UDAP45	\$632.49
UDAP60	\$666.49
UDAP75	\$698.59
UDAP100	\$798.69
UDAP125	\$899.99
UDAP150	\$958.49
UDAP175	\$1,064.82
UDAP200	\$1,141.09
UDAP225	\$1,232.89
UDAP250	\$1,326.69
UDAP300	\$1,587.19
UDAP350	\$1,801.19
UDAP400	\$1,938.39



TECHNICAL DATA

Model UDAP

Size		30	45	60	75	100	125	150	175	200	225	250	300	350	400
Input Heating Capacity	BTUH	30,000	45,000	60,000	75,000	105,000	120,000	150,000	175,000	200,000	225,000	250,000	300,000	350,000	400,000
	kW/h	8.8	13.2	17.6	22.0	30.8	35.2	43.9	51.2	58.6	65.9	73.2	87.8	102.5	117.1
Thermal Efficiency (%)		82	83	83	83	83	83	83	83	83	83	83	83	83	83
Output Heating Capacity ^A	BTUH	24,600	37,350	49,800	62,250	87,150	99,600	124,500	145,250	166,000	186,750	207,500	249,000	290,500	332,000
	kW/h	7.2	11.0	14.6	18.3	25.6	29.2	36.4	42.5	48.6	54.7	60.8	72.9	85.1	97.2
Gas Connection (inches) ^B	Natural	1/2	1/2	1/2	1/2	1/2	1/2	1/2	1/2	1/2	3/4	3/4	3/4	3/4	3/4
	Propane	1/2	1/2	1/2	1/2	1/2	1/2	1/2	1/2	1/2	3/4	3/4	3/4	3/4	3/4
Vent Connection Size ^C (inches diameter)		4	4	4	4	4	4	5	5	5	5	5	6	6	6
Control Amps (24 volt)		1.0	1.0	1.0	1.0	1.0	1.0	1.0	1.0	1.0	1.0	1.0	1.0	1.0	1.0
Full Load Amps (115 volt)		1.9	2.4	2.4	3.3	3.9	5.1	3.8	3.8	4.6	7.5	7.5	11.0	11.0	11.0
Maximum Over Current Protection (115V) ^D		15	15	15	15	15	15	15	15	15	15	15	20	20	20
Normal Power Consumption (watts)		109	155	155	217	276	354	392	392	491	747	747	1086	1086	1086
Discharge Air Temperature Rise (°F)		50	55	60	60	60	60	60	60	60	60	60	60	60	60
Air Volume	CFM	456	629	769	961	1345	1537	1921	2242	2562	2882	3202	3843	4483	5123
	M ³ /minute	12.9	17.8	21.8	27.5	36.7	45.9	54.4	63.5	72.5	81.6	90.7	108.8	126.9	145.1
Discharge Air Opening Area	ft ²	0.96	0.96	1.25	1.25	2.01	2.01	2.56	2.56	2.56	3.51	3.51	4.79	4.79	4.79
	M ²	0.09	0.09	0.12	0.12	0.19	0.19	0.24	0.24	0.24	0.33	0.33	0.45	0.45	0.45
Output Velocity	FPM	475	656	616	770	668	763	752	877	1003	820	911	802	936	1069
	M/minute	145	200	188	238	196	245	229	267	306	250	278	244	285	326
Fan Motor HP ^E	Open	0.02	0.03	0.03	0.06	1/30	1/20	1/6	1/6	1/6	1/4	1/4	1/2	1/2	1/2
	Enclosed	0.06	0.06	0.06	0.06	1/4	1/4	1/4	1/4	1/4	1/4	1/4	1/2	1/2	1/2
Fan Motor RPM		1550	1550	1550	1550	1050	1050	1050	1050	1050	1050	1050	1050	1050	1050
Fan Diameter (inches)		10	10	12	12	16	16	18	18	18	20	20	24	24	24
Sound Level	dBA @ 15 ft	40	40	40	49	54	55	51	52	53	56	56	59	61	62
Approximate Net Weight	lbs	54	59	67	72	96	101	172	187	187	203	215	269	294	306
	kg	24	27	30	33	44	46	78	85	85	92	98	122	133	139
Approximate Ship Weight	lbs	61	66	74	79	118	123	204	219	219	245	257	321	346	358
	kg	27	30	33	36	54	56	93	100	100	111	117	146	157	163

^A CSA rating for altitudes to 2000 ft.

^B Size shown is for gas connection to a single stage gas valve, not supply line size.

^C Smaller or larger vent pipe diameters may be allowed; refer to the Venting Installation Manual, Form I-V-PV. If vent diameter is different from vent connection, reducer/enlargers will be field-required.

^D MODP = 2.25 x (largest motor FLA) + smallest motor FLA. Answer is rounded to the nearest commercially available circuit breaker.

^E All other information in this table is based on a heater equipped with a standard 115 volt open fan motor.



TRANQUILITY 27 2-STAGE "EARTHPURE" R-410A REFRIGERANT

- CLOSED LOOP APPLICATION
- COPPER HEAT EXCHANGES
- ECM BLOWER
- 10 YEAR ALL PARTS WARRANTY WITH 5 YEAR LABOR ALLOWANCE
- MOST UNITS STOCKED ARE LEFT HAND RETURN, WITH HOT WATER GENERATOR



Model Number	Description	List	2 Ton	3 Ton	4 Ton	5 Ton	6 Ton
TTV026AGC01ALKS	with HWG	\$7,148	\$4,288.80				
TTV038AGC01ALKS	with HWG	\$7,884		\$4,730.40			
TTV049AGC01ALKS	with HWG	\$8,690			\$5,214.00		
TTV064AGC01ALKS	with HWG	\$9,583				\$5,749.80	
TTV072AGC01ALKS	with HWG	\$9,889					\$5,933.40
AGM12A	12 KW Heater	\$490	\$294.00				
AGL15A	15 KW Heater	\$528		\$316.80			
AGL20A	20 KW Heater	\$575			\$345	\$345	\$345
ATP32U03	Thermostat	\$285	\$171.00	\$171.00	\$171.00	\$171.00	\$171.00
AFCG1C1	1 Pump Flow Center	\$863	\$517.80	\$517.80			
AFCG2C1	2 Pump Flow Center	\$1,170			\$702.00	\$702.00	\$702.00
AHK5EC	Connector Kit	\$208	\$124.80	\$124.80	\$124.80	\$124.80	\$124.80
AFC6F	1.25" Fuse Fitting	\$25	\$15.00	\$15.00	\$15.00	\$15.00	\$15.00
EP-30x30x2	Air Pad		\$17.26	\$17.26	\$17.26	\$17.26	\$17.26
TOTAL			\$5,431.40	\$5,895.80	\$6,591.80	\$7,127.60	\$7,311.20
add for PURGE TOOL	AFC4C	\$34	\$20.40	\$20.40	\$20.40	\$20.40	\$20.40
add for HWG CONCENTRIC FITTING	S96919804 HWG may be piped w/o this	\$53	\$31.80	\$31.80	\$31.80	\$31.80	\$31.80
deduct for NO HWG	change '01' in model # to '00'	\$570	\$342.00	\$342.00	\$342.00	\$342.00	\$342.00

ADD FOR OPTIONAL FACTORY 10 YEARS PARTS/10 YEAR LABOR ALLOWANCE (PART #EWOSL3) \$300.00

DUCT WORK

Part #	Description	In Season Price	Pre-Season Price
100-8-5-UC	8X8X60 CB DUCT	\$12.25	\$11.02
100-8-5	8X8X60 CB DUCT BOXED	\$14.25	\$12.82
100-10-5-UC	10X8X60 CB DUCT	\$13.52	\$12.16
100-10-5	10X8X60 CB DUCT BOXED	\$15.56	\$14.00
100-12-5-UC	12X8X60 CB DUCT	\$14.84	\$13.35
100-12-5	12X8X60 CB DUCT BOXED	\$17.01	\$15.31
100-14-5-UC	14X8X60 CB DUCT	\$16.16	\$14.54
100-14-5	14X8X60 CB DUCT BOXED	\$18.48	\$16.64
100-16-5-UC	16X8X60 CB DUCT	\$18.14	\$16.33
100-16-5	16X8X60 CB DUCT BOXED	\$20.58	\$18.52
100-18-5-UC	18X8X60 CB DUCT	\$20.69	\$18.62
100-18-5	18X8X60 CB DUCT BOXED	\$23.56	\$21.20
100-20-5-UC	20X8X60 CB DUCT	\$22.16	\$19.94
100-20-5	20X8X60 CB DUCT BOXED	\$25.10	\$22.59

PIPE

Part #	Description	In Season Price	Pre-Season Price
1-4-30-5	4"X5' 30GA PIPE CTN.	\$4.38	\$3.94
1-4-30-5-UC	4"X5' 30GA PIPE	\$4.14	\$3.73
1-6-30-5	6"X5' 30GA PIPE CTN.	\$4.74	\$4.27
1-6-30-5-UC	6"X5' 30GA PIPE	\$4.59	\$4.13
1-7-30-5	7"X5' 30GA PIPE	\$6.94	\$6.25
1-7-30-5-UC	7"X5' 30GA PIPE	\$6.84	\$6.15
1-8-30-5	8"X5' 30GA PIPE CTN.	\$7.88	\$7.09
1-8-30-5-UC	8"X5' 30GA.PIPE UNCART	\$7.63	\$6.87
1-6-30-10	6"X10' 30GA PIPE BOXED	\$9.76	\$8.79
1-6-30-10-UC	6"X10' 30GA PIPE	\$9.12	\$8.21

SHEET METAL

ELBOWS

Part #	Description	In Season Price	Pre-Season Price
3-4-30	4" 90 ELBOW 30GA	\$1.24	\$1.12
3-6-30	6" 90 ELBOW 30GA	\$1.45	\$1.30
3-7-30	7" 90 ELBOW 30GA	\$2.13	\$1.92
3-8-30	8" 90 ELBOW 30GA	\$2.48	\$2.23

COLLARS

Part #	Description	In Season Price	Pre-Season Price
T25-6	6" CRIMPED START COLLAR	\$0.88	\$0.79
T25-7	7" CRIMPED START COLLAR	\$0.97	\$0.88
T25-8	8" CRIMPED START COLLAR	\$1.08	\$0.97

TOP TAKE-OFFS

Part #	Description	In Season Price	Pre-Season Price
T6-6	6" T6 RD TO RD FULL TAB	\$2.85	\$2.57
T5-6	6" T5 RD TO RD 1/2 TAB	\$2.85	\$2.56

BOOTS

Part #	Description	In Season Price	Pre-Season Price
P5-2X12-6	2X12X6 STRAIGHT BOOT	\$3.41	\$3.07
P5-4X10-6	4X10X6 STRAIGHT BOOT	\$3.35	\$3.01
P13-2X12-6	2X12X6 ANGLE BOOT	\$3.18	\$2.86
P13-4X10-6	4X10X6 ANGLE BOOT	\$3.30	\$2.97
P17-2X12-6	2X12X6 END BOOT	\$3.61	\$3.25
P17-4X10-6	4X10X6 END BOOT	\$3.63	\$3.27

DRIVE & S CLEATS

Part #	Description	In Season Price	Pre-Season Price
18-60	60" DRIVE CLEATS	\$1.14	\$1.03
18-8	8" DRIVE CLEATS	\$0.23	\$0.21
20-60	60" S CLEATS	\$1.94	\$1.75

RETURN AIR DROP

Part #	Description	In Season Price	Pre-Season Price
70-CAD	20X10/16X20 RETURN AIRDR	\$82.99	\$74.69
71-CAD	25X10/16X25 RETURN AIRDR	\$91.12	\$82.01

RETURN AIR BOXES

Part #	Description	In Season Price	Pre-Season Price
SBF30	RETURN AIR SUPPORT BOX	\$120.69	\$108.62
SBF36	RETURN AIR SUPPORT BOX	\$126.46	\$113.81
SBF37	RET.BOX W/O R/A CUTOUT	\$125.23	\$112.71

TAPERED REDUCERS

Part #	Description	In Season Price	Pre-Season Price
66-4X3	4X3 TAPERED REDUCER	\$3.01	\$2.71
66-5X3	5X3 TAPERED REDUCER	\$3.19	\$2.87
66-5X4	5X4 TAPERED REDUCER	\$3.29	\$2.96
66-6X4	6X4 TAPERED REDUCER	\$3.50	\$3.15
66-6X5	6X5 TAPERED REDUCER	\$3.54	\$3.19

SHEET METAL

HIGH EFFICIENT TAKE-OFFS

Part #	Description	In Season Price	Pre-Season Price
HETOD-6	HIGH EFF. 6" TO W/DAMPER	\$10.31	\$9.28
HETOD-7	7" HIGH EFF TO W/DAMPER	\$12.81	\$11.53
HETOD-8	HIGH EFF. 8" TO W/DAMPER	\$11.78	\$10.60

DAMPERS

Part #	Description	In Season Price	Pre-Season Price
9-6	6" DAMPER W/HANDLE	\$0.97	\$0.87
9-7	7" ROUND DAMPER	\$2.13	\$1.92

BASSET HANGERS & BRACKETS

Part #	Description	In Season Price	Pre-Season Price
BH-8	8" HANGER C-AIR BOX100	\$28.60	\$26.74
BH-9	9" HANGER W-AIR SUP BOX100	\$31.67	\$29.61
BH-10	10" DUCT HNGR W-AIR BOX100	\$39.07	\$36.53
A-125	A-125 12"-19" BRKT BOX25	\$17.46	\$16.32
A-150	A-150 12"-19" BRKT BOX50	\$34.03	\$31.82

VENTS & HOODS

Part #	Description	In Season Price	Pre-Season Price
SVHUW4	DEFL 4" WHITE HOOD ASSEMBLY	\$2.26	\$2.12
SVHUB4	4" BROWN HOOD ASSEMB	\$2.26	\$2.12
RVHUW4	DEFL 4" WIDE VENT/PIPE/COLL	\$2.65	\$2.48
RVHUB4	DEFL 4" WIDE MOUTH HOOD	\$2.65	\$2.48
HSM6W	DEFL 6"FRSH AIR INTKE VEN	\$4.00	\$3.74
DVBOX	DEFL DRYER BOX	\$17.06	\$15.95

THERMOPANS

Part #	Description	In Season Price	Pre-Season Price
TP-16012	16X12 THERMO HEADER	\$0.89	\$0.83
TP-16016	16X16 THERMO HEADER	\$1.21	\$1.13
16020	16X19 HEADER I-JOIST	\$2.99	\$2.79
14630	30X6 THERMO AIR FRAME	\$1.65	\$1.55
TP-16048	16X48 THERMOPAN	\$2.92	\$2.73
19048	19.5X48 THERMOPAN	\$3.56	\$3.32

T BAR DIFFUSERS

Part #	Description	In Season Price	Pre-Season Price
BHV06NI	FIXED PATTERN DIFFUSER 6"	\$25.51	\$23.86
BHV08NI	FIXED PATTERN DIFFUSER 8"	\$25.51	\$23.86
BHV10NI	FIXED PATTERN DIFFUSER 10"	\$25.51	\$23.86
BHV12NI	FIXED PATTERN DIFFUSER 12"	\$25.51	\$23.86

SIDEWALL-CEILING REGISTERS

Part #	Description	In Season Price	Pre-Season Price
32W1004	10X4 SIDEWALL/CEILINGREG	\$3.32	\$3.10
32W1006	10X6 SIDEWALL/CEILINGREG	\$3.50	\$3.27
32W1204	12X4 SIDEWALL/CEILINGREG	\$3.71	\$3.47
32W1206	12X6 SIDEWALL/CEILINGREG	\$4.68	\$4.38

RETURN AIR GRILLES

Part #	Description	In Season Price	Pre-Season Price
G35W1406	14X6 RETURN AIR GRILLE	\$1.94	\$1.82
G35W2406	24X6 RETURN AIR GRILLE	\$3.56	\$3.32
G35W3006	30X6 RETURN AIR GRILLE	\$3.13	\$2.92

FLOOR DIFFUSERS

Part #	Description	In Season Price	Pre-Season Price
28B0210	2X10 BROWN FLOOR REGISTER	\$2.21	\$2.06
28W0210	2X10 WHITE FLOOR REGISTER	\$2.21	\$2.06
28B0212	2X12 BROWN FLOOR REGISTER	\$2.24	\$2.09
28W0212	2X12 WHITE FLOOR REGISTER	\$2.24	\$2.09
28B0410	4X10 BROWN FLOOR REGISTER	\$2.13	\$1.99
28W0410	4X10 WHITE FLOOR REGISTER	\$2.13	\$1.99

B-VENTS

Part #	Description	In Season Price	Pre-Season Price
4M5	4"X5' B-VENT PIPE	\$18.86	\$17.64
4M4	4"X4' B-VENT PIPE	\$15.88	\$14.84
4M3	4"X3' B-VENT PIPE	\$12.18	\$11.39
5M5	5"X5' B-VENT PIPE	\$21.13	\$19.75
5M4	5"X4' B-VENT PIPE	\$17.61	\$16.47
5M3	5"X3' B-VENT PIPE	\$13.54	\$12.66
6M5	6"X5' B-VENT PIPE	\$24.39	\$22.81
6M4	6"X4' B-VENT PIPE	\$20.47	\$19.14
6M3	6"X3' B-VENT PIPE	\$15.64	\$14.62
4M90	4"-90 ADJ. ELBOW	\$15.78	\$14.75
5M90	5"-90 ADJ. ELBOW	\$18.82	\$17.60
6M90	6"-90 ADJ. ELBOW	\$22.57	\$21.10
4MCHP	4" HIGH PERFORMANCE CAP	\$7.53	\$7.04
5MCHP	5" HIGH PERFORMANCE CAP	\$10.36	\$9.69
6MCHP	6" HIGH PERFORMANCE CAP	\$13.35	\$12.48

CHIMNEY LINER

Part #	Description	In Season Price	Pre-Season Price
MLKE0325	3IN 25FT CHIMNEY LINER	\$55.01	\$51.44
MLKE0425	4IN 25FT CHIMNEY LINER	\$62.64	\$58.57
MLKE0525	5IN 25FT CHIMNEY LINER	\$72.76	\$68.04
MLKE0625	6IN 25FT CHIMNEY LINER	\$86.60	\$80.97
MLKE0335	3IN 35FT CHIMNEY LINER	\$65.51	\$61.26
MLKE0435	4IN 35FT CHIMNEY LINER	\$78.79	\$73.68
MLKE0535	5IN 35FT CHIMNEY LINER	\$92.74	\$86.71
MLKE0635	6IN 35FT CHIMNEY LINER	\$110.26	\$103.10

SCREWS

Part #	Description	In Season Price	Pre-Season Price
HW7X12Z15M	MALCO ZIP-IN SCREWS (15M)	\$228.91	\$213.65
HW7X12Z	MALCO ZIP-IN SCREWS (M)	\$16.69	\$15.57
HW8X1/2Z	MALCO ZIPIN SCRW 12000PK	\$198.89	\$185.63
HW8X1/2ZT	MALCO ZIP-IN SCREWS 1000BX	\$17.96	\$16.76
BT131T	MALCO BIT-TIP SCREW 18X1/2	\$27.47	\$25.64
BT133	MALCO 8-18X3/4 HW 10,000	\$338.20	\$315.65
HW8X3/4Z	MALCO 8X3/4 ZIP-IN 10,000	\$220.46	\$205.76
8X34Z1000	MALCO ZIP-IN 3/4 1,000	\$23.34	\$21.79



FLEX DUCT Pricing



Prices Good for Orders Placed and Delivered between September 1st and October 31st, 2011 and based on available quantities

Black Vinyl

Size	R8			R6			R4.2		
		In Season	Preseason Pricing		In Season	Preseason Pricing		In Season	Preseason Pricing
4x25	FD-4x25-R8BV	Call	19.19	FD-4x25-R6BV	Call	13.09	FD-4x25-R42BV	Call	11.29
5X25	FD-5X25-R8BV	Call	20.89	FD-5X25-R6BV	Call	15.69	FD-5X25-R42BV	Call	12.69
6x25	FD-6x25-R8BV	Call	22.29	FD-6x25-R6BV	Call	17.79	FD-6x25-R42BV	Call	14.49
7x25	FD-7x25-R8BV	Call	24.59	FD-7x25-R6BV	Call	19.59	FD-7x25-R42BV	Call	15.69
8x25	FD-8x25-R8BV	Call	27.39	FD-8x25-R6BV	Call	20.99	FD-8x25-R42BV	Call	17.59
9X25	FD-9X25-R8BV	Call	30.19	FD-9X25-R6BV	Call	23.49			
10x25	FD-10x25-R8BV	Call	33.19	FD-10x25-R6BV	Call	26.29	FD-10x25-R42BV	Call	22.09
12x25	FD-12x25-R8BV	Call	40.79	FD-12x25-R6BV	Call	31.19	FD-12x25-R42BV	Call	26.99
14x25	FD-14x25-R8BV	Call	50.19	FD-14x25-R6BV	Call	38.19	FD-14x25-R42BV	Call	31.99
16x25	FD-16x25-R8BV	Call	58.19	FD-16x25-R6BV	Call	44.59	FD-16x25-R42BV	Call	38.49
18x25	FD-18x25-R8BV	Call	69.09	FD-18x25-R6BV	Call	50.99	FD-18x25-R42BV	Call	43.89
20x25							FD-20x25-R42BV	Call	51.39

Prices Good for Orders Placed and Delivered between September 1st and October 31st, 2011 and based on available quantities

Not all sizes and R values available at all locations, but can be specially ordered

BISMARCK

701-221-3283
888-873-8299

CEDAR FALLS

319-277-3949
888-422-8299

COLUMBIA

573-474-3408
877-644-4800

DENVER

303-893-1120
800-683-8989

DES MOINES

515-331-3743
800-397-8299

KANSAS CITY

816-471-3744
800-535-7117

LOVELAND

970-282-7586
888-683-5187

LENEXA

913-888-0202
800-449-8877

OMAHA

402-334-7777
800-779-8299

RAPID CITY

605-355-0287
888-452-8299

SPRINGFIELD

417-863-0991
800-942-7022

SIOUX FALLS

605-334-7777
800-728-8299

WICHITA

316-942-2257
800-552-0178

For More Informtaion Visit

www.TopTechParts.com

to place oders

www.comfortproducts.com

Exclusively for HVAC Professionals!



Why Choose TopTech Thermostats?

- 1 **Larger displays are brighter and better.** The **TopTech** line of thermostats boasts the largest displays for the price. You simply will not find a better value.
- 2 **One stat does it all!** Our thermostats give you the flexibility and ease of use to make your installations painless. Our Universal design (up to 3H/2C) and exclusive upgrade path allows a system to be upgraded without rewiring a subbase.
- 3 **Easy dealer imprint.** With the best private label program in the industry. Spend less on inventory and more time giving your customers the exact model they need, using our exclusive “badge system”. The best dealer imprinting program in the industry.

Available Now!
Wireless
Temperature
Control System

Universal
3H/2C Heat Pump
2H/2C Conventional



Master
Thermostat



Outdoor
Remote
(optional)



Indoor
Remote
(optional)

Wireless Range

The range between devices is up to 100 feet with no obstructions or up to 50 feet in standard residential construction.

TopTech

comfort | excellence

TopTech Model #		7D	5/1/1	NP	Stages of Heat	Stages of Cool	Gas, Electric or Oil	Heat Pump	Millivolt	Battery Power	24V Power (Hardwire)	Dual Fuel Compatible	Display Size (Square Inches)	Auto Changeover	
TOUCHSCREEN	Wireless														
	TT-S-955WH**	N	7D	5/1/1	NP	3*	2	•	•	•	•	H	13	•	
	TT-S-955W**		7D	5/1/1	NP	3*	2	•	•	•	•	H	13	•	
	Wired														
	TT-S-955	N	7D	5/1/1	NP	3*	2	•	•	•	•	S	13	•	
	TT-S-925		7D	5/1/1	NP	3	2	•	•	•	•	S	13	•	
	TT-S-915		7D	5/1/1	NP	2	2	•	•	•	•		13	•	
LARGER	TT-S-855		7D	5/1/1	NP	3*	2	•	•	•	•	S	8	•	
	TT-N-851	N		NP		3*	2	•	•	•	•	S	8	•	
	TT-N-801			NP		1	1	•	•	•	•		8	•	
LARGE	TT-S-755	N		5/1/1	NP	3*	2	•	•	•	•	S	6		
	TT-N-751H	N		NP		3*	2	•	•	•	•	S	6		
	TT-N-751	N		NP		3*	2	•	•	•	•	S	6		
	TT-N-721			NP		2	1	•	•	•	•	S	4		
	TT-P-705			5/1/1		1	1	•	•	•	•		4		
	TT-N-701			NP		1	1	•	•	•	•		4		

* 3 heat stages for heat pump or 2 heat stages for conventional.

** Wireless accessories available for **T955W**. **R251W** is an indoor remote temperature sensor. **R250W** is an outdoor remote temperature sensor.

Filter Change Reminder	Room Temperature Calibration	Minimum Compressor Run Time	Compressor Short Cycle Delay	Adjustable Heating Temperature Swing	Adjustable Cooling Temperature Swing	Programmable Fan	Keypad Lockout	Adjustable Setpoint Limits	Averaging & Remote Sensor Capable	Humidity Control	Memory Type (Permanent)	Touchscreen	Warranty (Years)	Terminals Shielded cable not required
•	•	•	•	•	•	•	•	•	•	•	•	•	5	Rh, Rc, C, Y, Y2, W/E, W2, G, B, O, H, D
•	•	•	•	•	•	•	•	•	•	•	•	•	5	Rh, Rc, C, Y, Y2, W/E, W2, G, B, O
•	•	•	•	•	•	•	•	•			•	•	5	Rh, Rc, C, Y, Y2, W/E, W2, G, B, O
•	•	•	•	•	•	•	•	•			•	•	5	R, C, Y, Y2, W2, E, G, B, O, L
•	•	•	•	•	•	•	•	•			•	•	5	R, C, Y, Y2, W, W2, G, B, O
•	•	•	•	•	•	•	•	•			•		5	Rh, Rc, C, Y, Y2, W/E, W2, G, B, O
•	•	•	•	•	•		•	•			•		5	Rh, Rc, C, Y, Y2, W/E, W2, G, B, O
•	•	•	•	•	•						•		5	Rh, Rc, C, Y, W, G, B, O
•	•	•	•	•	•	•					•		5	Rh, Rc, C, Y, Y2, W/E, W2, G, B, O
•	•	•	•	•	•				•		•		5	Rh, Rc, C, Y, Y2, W/E, W2, G, B, O, H, D
•	•	•	•	•	•						•		5	Rh, Rc, C, Y, Y2, W/E, W2, G, B, O
•	•	•	•	•	•						•		5	R, C, Y, W2, E, G, B, O
•	•	•	•	•	•						•		5	Rh, Rc, C, Y, W, G, B, O
	•		•	•	•						•		5	Rh, Rc, C, Y, W, G, B, O

H Dual fuel hardware balance point. Requires outdoor temperature accessory **R250W**.

S Dual fuel software setting. **Y** de-energizes when **W2** energizes.

N Available Mid 2010

TechFlex

TECHNOLOGY
SERIES



It's **Blue** on the
Outside & **Agion[®] Silver**
on the Inside!

“Certified Formaldehyde Free” Johns Manville Insulation

- Formaldehyde Free Insulation
 - Internal Core coated with Agion[®], highly effective against a broad spectrum of bacteria.
 - Silver has been used for centuries dating back to Medieval times to prevent bacteria growth.
 - Controls the growth of fungi, mold and mildew
 - Suppresses offensive odors
 - Blue Jacket identifies the superior difference between TechFlex **Technology Series** and other common flex in the marketplace
 - Heavy duty “Tri-Directional” scrim provides great tensile jacket strength for extra durability
 - Galvanized metal wire for greater core reinforcement

Resists Germ,
Mold & Bacteria
Growth



by **TopTech**
comfort | excellence

www.TopTechParts.com

NORTH REGION

Omaha

13202 "I" Street, Omaha, NE 68137
phone: 402.334.7777 or 1.800.779.8299
fax: 402.334.5475 | after hours: 402.319.6585

Bismarck

1224 Airport Road, Bismarck, ND 58504
phone: 701.221.3283 or 1.888.873.8299
fax: 701.221.9027
after hours: 701.426.1459 or 701.425.1567

Cedar Falls

5529 Nordic Drive, Cedar Falls, IA 50613
phone: 319.277.3949 or 1.888.422.8299
fax: 319.277.4838 | after hours: 319.290.5442

Des Moines

4101 NW 121st Street, Urbandale, IA 50323
phone: 515.331.3743 or 1.800.397.8299
fax: 515.331.3836 | after hours: 515.360-0362

Rapid City

2885 N. Plaza Drive, Rapid City, SD 57702
phone: 605.355.0287 or 1.888.452.8299
fax: 605.355.0322 | after hours: 605.431.7814

Sioux Falls

1420 N. Minnesota, Sioux Falls, SD 57104
phone: 605.334.7777 or 1.800.728.8299
fax: 605.334.5740 | after hours: 605.366.4560



Contact your local Comfort Products
Distributing office or order online at
www.comfortproducts.com

SOUTHEAST REGION

Lenexa

15470 W. 110th Street, Lenexa, KS 66219
phone: 913.888.0202 or 1.800.449.8877
fax: 913.888.7390 | after hours: 913.226.0943

Columbia

1611 Burlington Street, Columbia, MO 65202
phone: 573.474.3408 or 1.877.644.4800
fax: 573.474.7409 | after hours: 573.590.0440

Kansas City

1821 Bedford Street, Kansas City, MO 64116
phone: 816.471.3744 or 1.800.535.7117
fax: 816.471.1861 | after hours: 816.215.0069

Springfield

1360 E. Chestnut Exp, Springfield, MO 65802
phone: 417.863.0991 or 1.800.942.7022
fax: 417.831.7477 | after hours: 417.838.5382

SOUTHWEST REGION

Wichita

3005 W. Harry, Wichita, KS 67213
phone: 316.942.2257 or 1.800.552.0178
fax: 316.943.0164 | after hours: 316.708.0847

WEST REGION

(Contractor Heating Supply)

Denver

3107 S. Platte River Dr, Englewood, CO 80110
phone: 303.893.1120 or 1.800.683.8989
fax: 303.898.8513

Loveland

3951 MacArthur Avenue, Loveland, CO 80538
phone: 970.282.7586
fax: 970.282.7612 | after hours: 970.567.2071